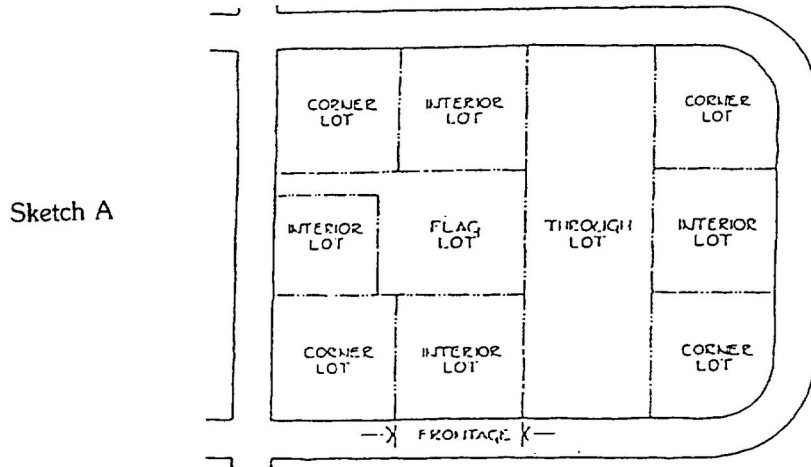


# ZONING

## 240 Attachment 1

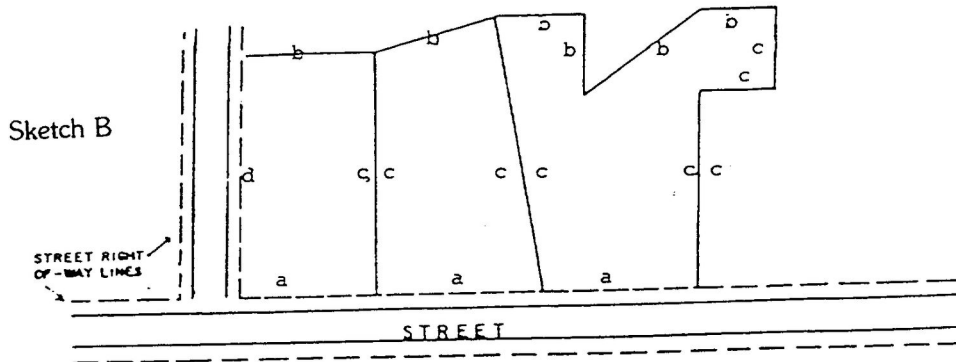
### Township of East Goshen Illustrations: Sketches A through J

The following sketches are for illustrative purposes only, and shall not control or revise the provisions of the text of this Zoning Ordinance.



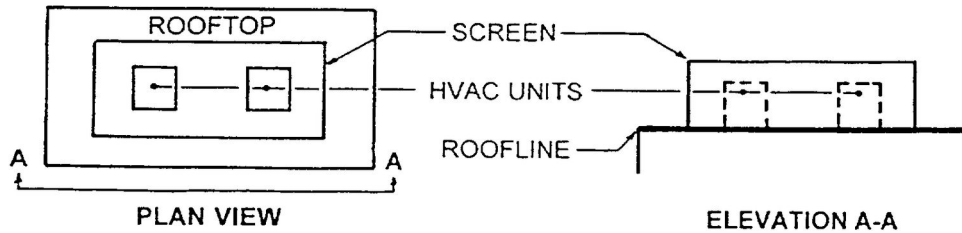
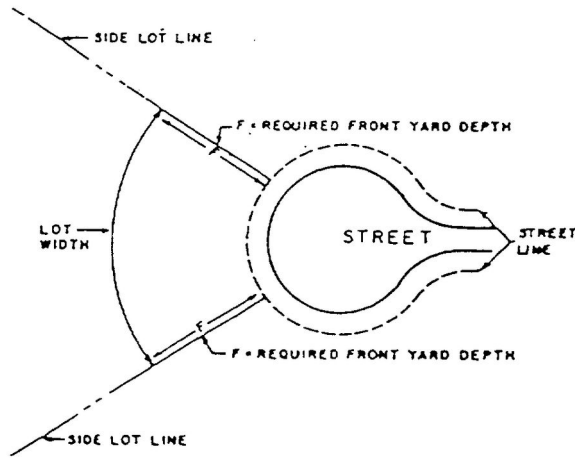
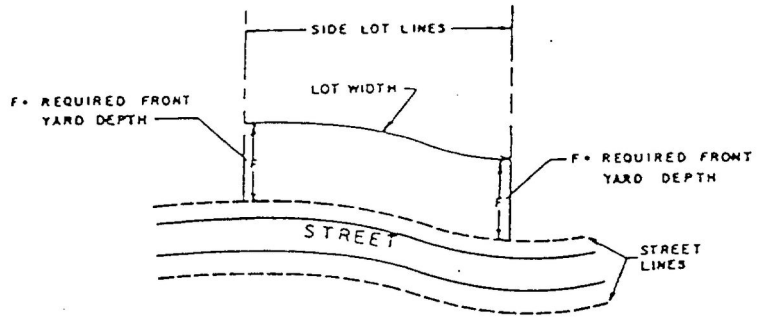
SAMPLE LOT LINE CONFIGURATIONS: Abbreviations correspond to:

- a = Front Lot Line
- b = Rear Lot Line
- c = Side Lot Line
- d = Side Street Lot Line



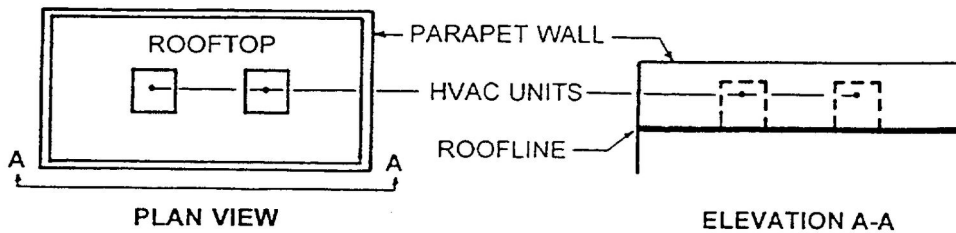
EAST GOSHEN CODE

Sketch C



OR

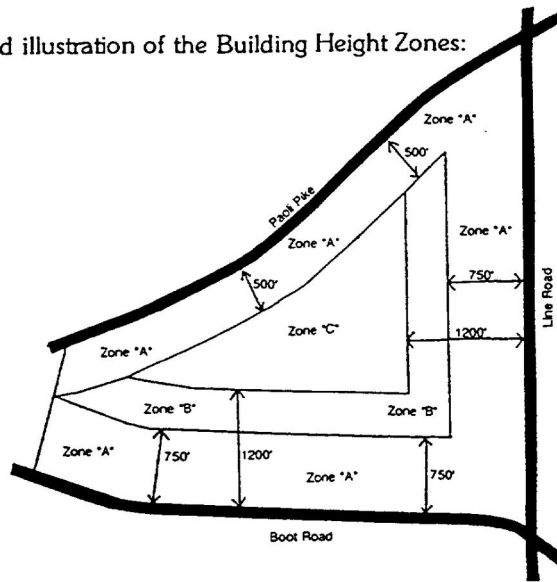
Sketch D



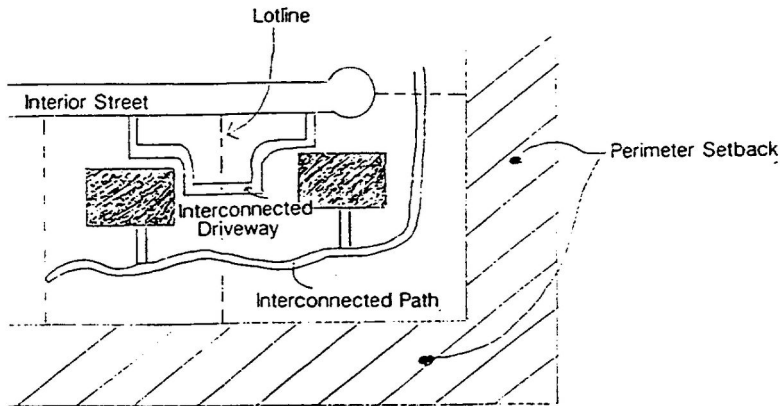
# ZONING

The following is a generalized illustration of the Building Height Zones:

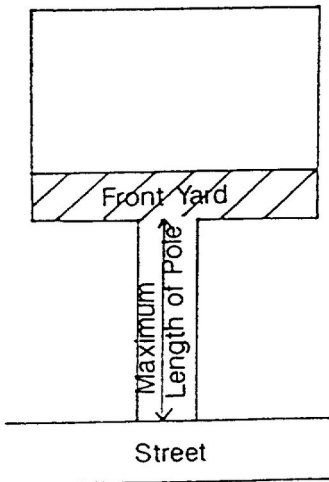
Sketch E



Sketch F

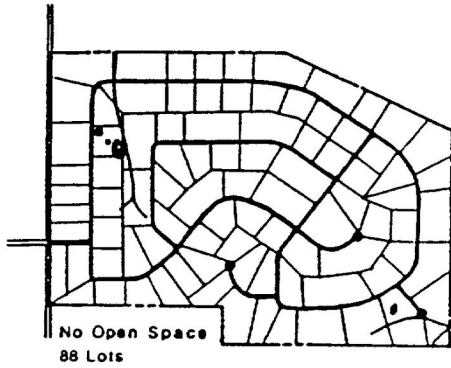
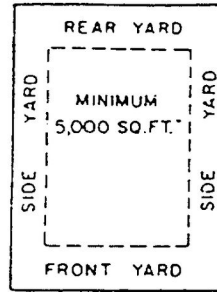


Sketch G

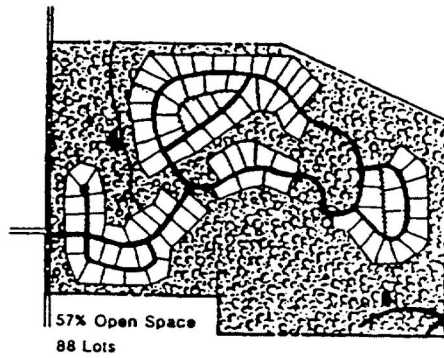


EAST GOSHEN CODE

Sketch H



Conventional Subdivision



Cluster Option

Sketch I

a comparison of  
The Cluster Option and  
a Conventional Subdivision  
in the R-2 District

East Goshen Township Comprehensive Plan

Thomas Comitta Associates, Inc.  
Planning & Design Consultants

ZONING

Sketch J

Terms For Lot Requirements  
For Illustrative Purposes Only

