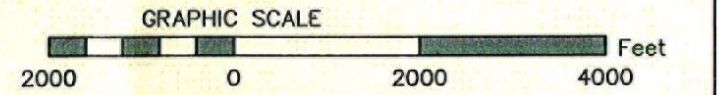
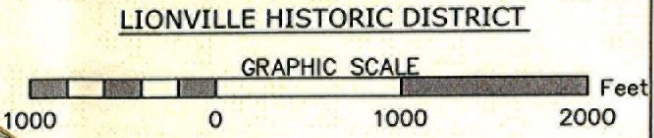
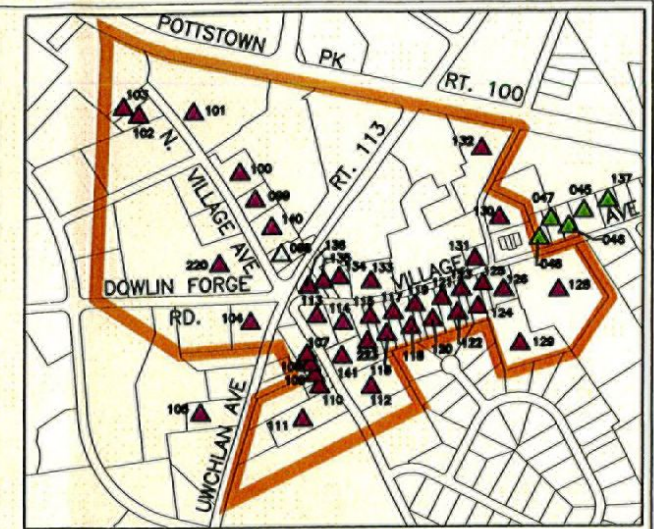
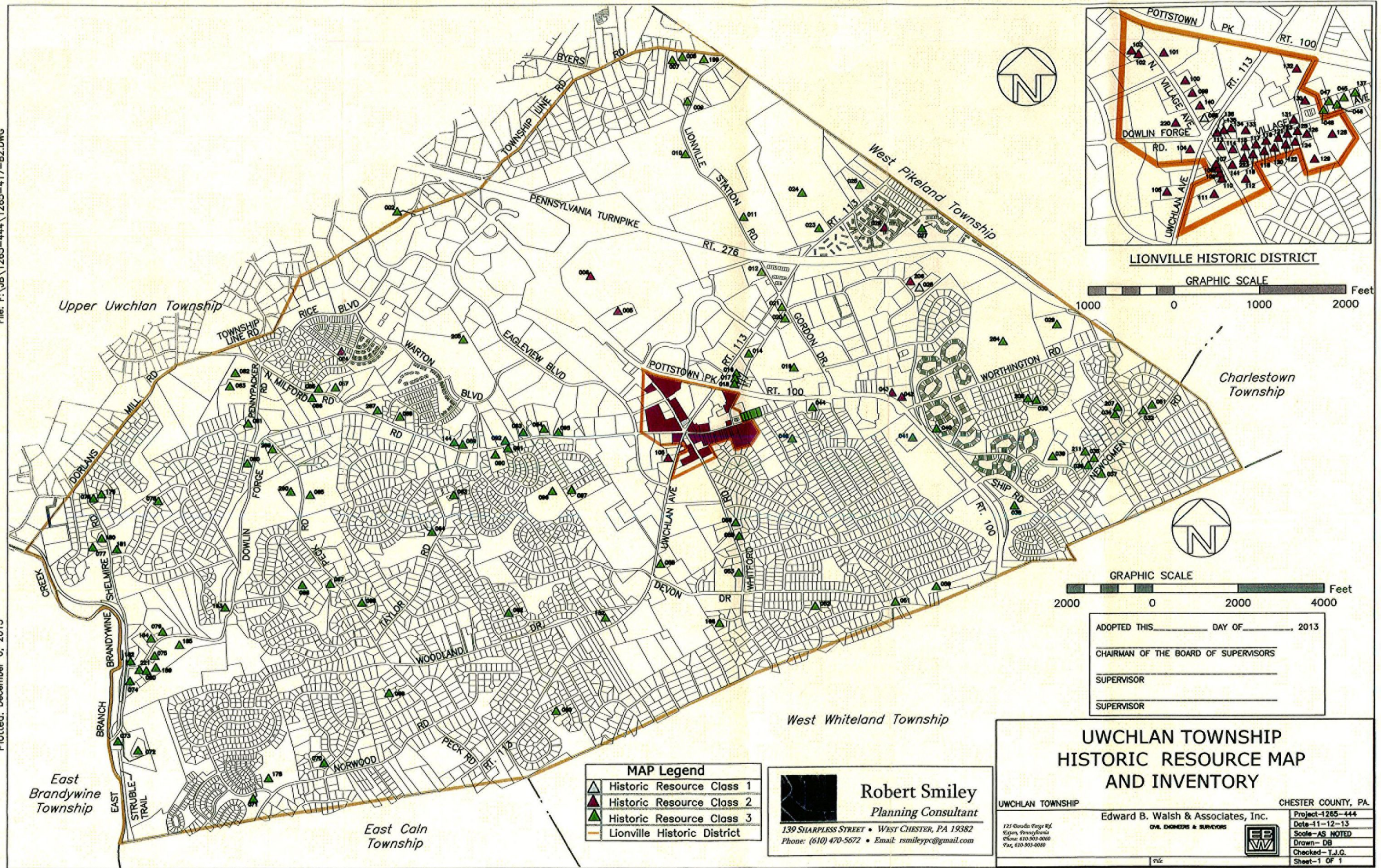


File: F:\JB\1265-444\1265-417-B2.DWG

Plotted: December 6, 2013



ADOPTED THIS _____ DAY OF _____, 2013

CHAIRMAN OF THE BOARD OF SUPERVISORS _____

SUPERVISOR _____

SUPERVISOR _____

MAP Legend	
	Historic Resource Class 1
	Historic Resource Class 2
	Historic Resource Class 3
	Lionville Historic District

Robert Smiley
 Planning Consultant
 139 SHARPLESS STREET • WEST CHESTER, PA 19382
 Phone: (610) 470-5672 • Email: rsmileypc@gmail.com

**UWCHLAN TOWNSHIP
 HISTORIC RESOURCE MAP
 AND INVENTORY**

UWCHLAN TOWNSHIP CHESTER COUNTY, PA.
 Edward B. Walsh & Associates, Inc.
 CIVIL ENGINEERS & SURVEYORS

125 Dowlin Forge Rd.
 Exton, Pennsylvania
 Phone: 610-903-0060
 Fax: 610-903-0080

Project-1265-444
 Date-11-12-13
 Scale-AS NOTED
 Drawn-DB
 Checked-T.J.G.
 Sheet-1 OF 1