





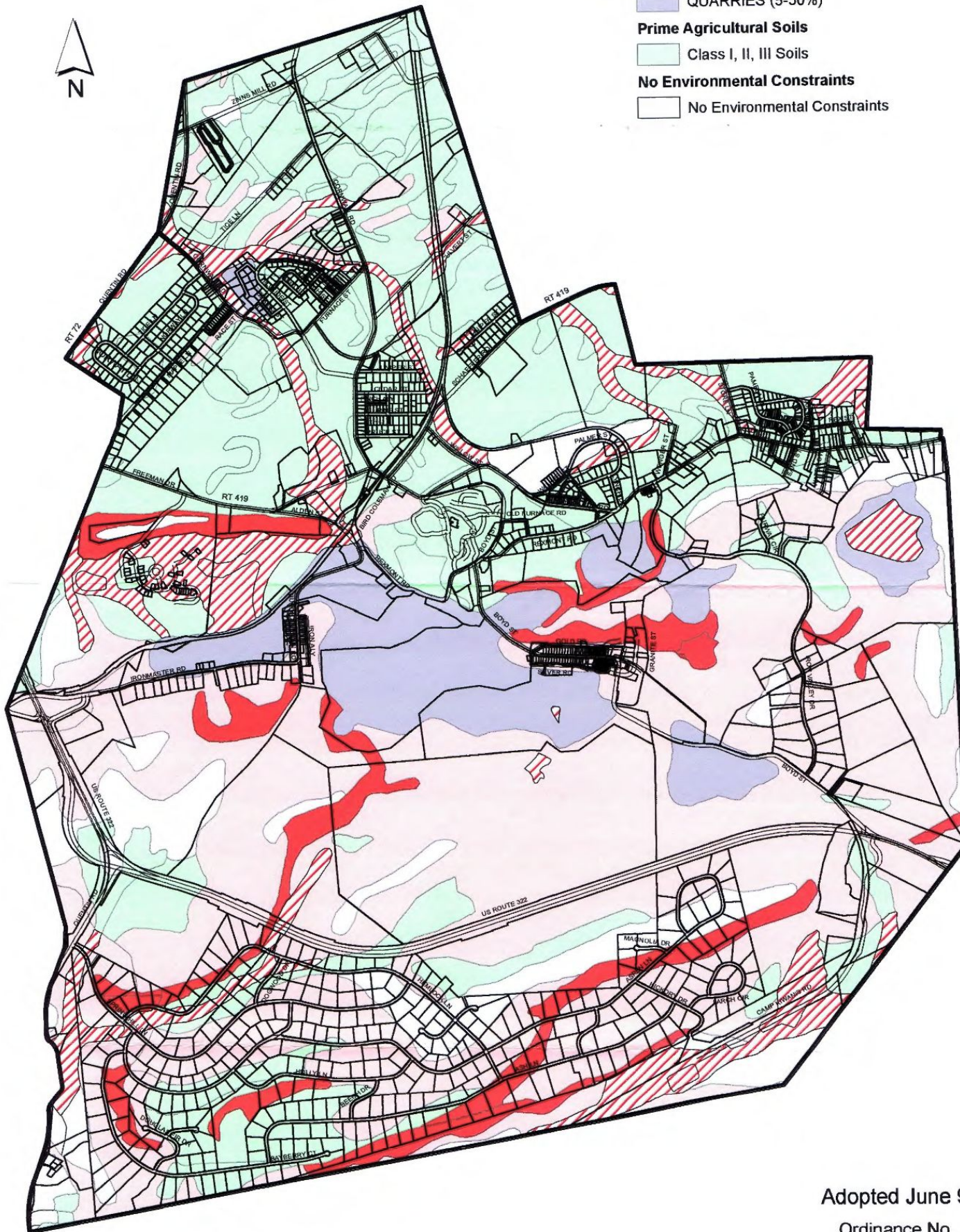


ENVIRONMENTAL PROTECTION OVERLAY

SHEET 3 OF 3

-  Possible Hydric Soils
- Slopes and Distributed Areas**
-  SLOPES 25% +
-  SLOPES 8-25%
-  QUARRIES (5-50%)
- Prime Agricultural Soils**
-  Class I, II, III Soils
- No Environmental Constraints**
-  No Environmental Constraints



Adopted June 9, 2008
Ordinance No. 1-2008



CORNWALL BOROUGH