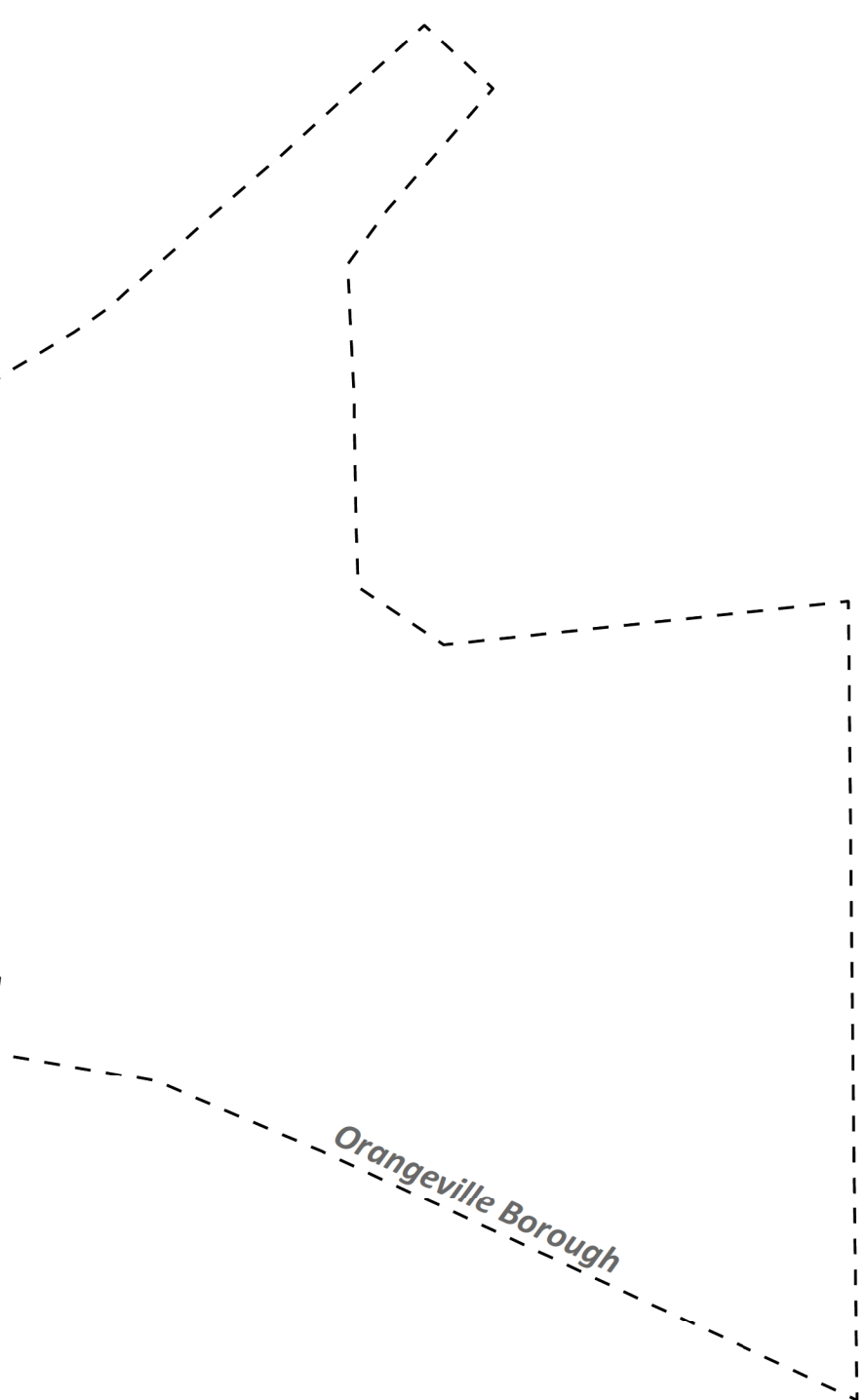


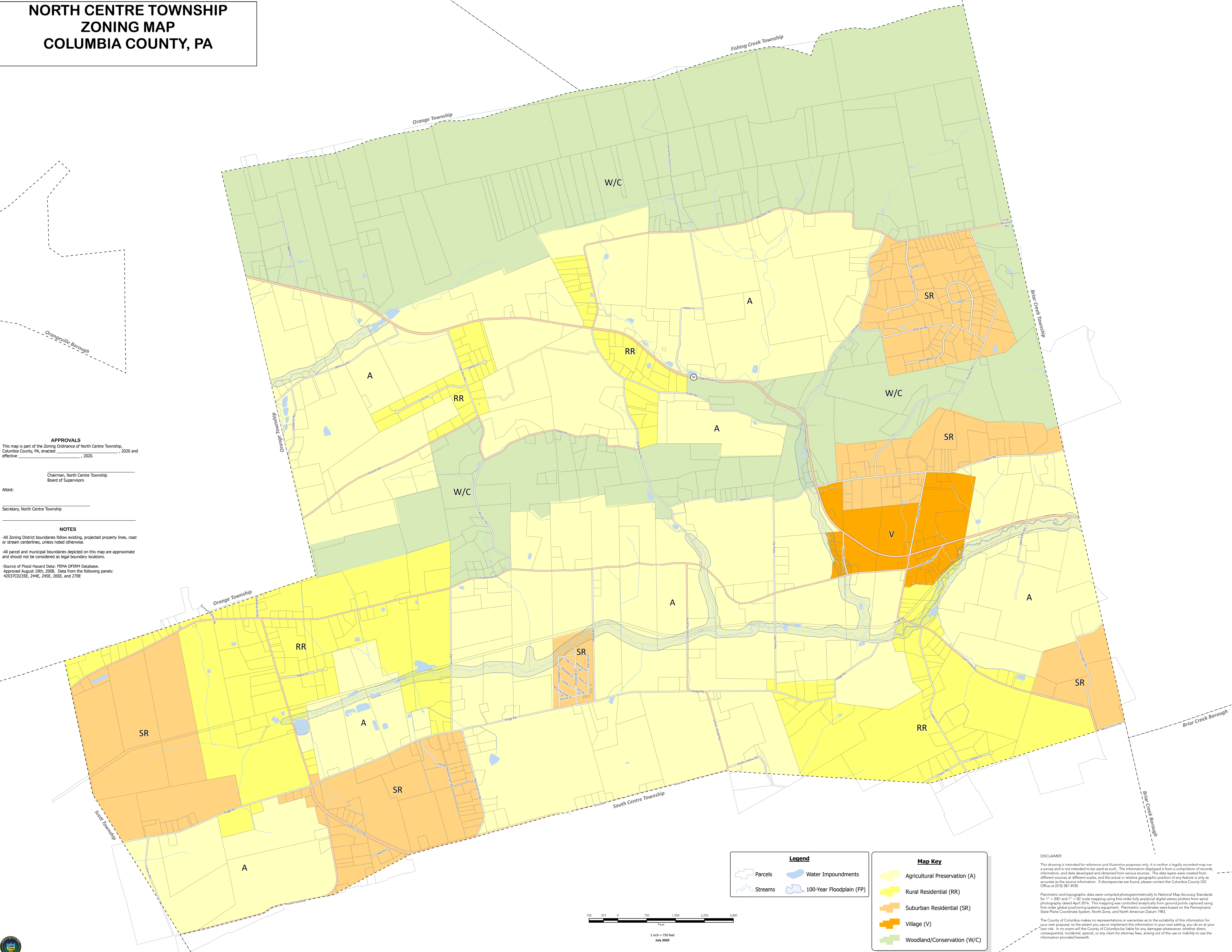
# NORTH CENTRE TOWNSHIP ZONING MAP COLUMBIA COUNTY, PA



**APPROVALS**  
This map is part of the Zoning Ordinance of North Centre Township, Columbia County, PA, enacted \_\_\_\_\_, 2020 and effective \_\_\_\_\_, 2020.

Chairman, North Centre Township Board of Supervisors  
Attest:  
Secretary, North Centre Township

**NOTES**  
-All Zoning District boundaries follow existing, projected property lines, road or stream centerlines, unless noted otherwise.  
-All parcel and municipal boundaries depicted on this map are approximate and should not be considered as legal boundary locations.  
-Source of Flood Hazard Data: FEMA DFIRM Database. Approved August 19th, 2008. Data from the following panels: 4203700235E, 244E, 245E, 355E, and 270E

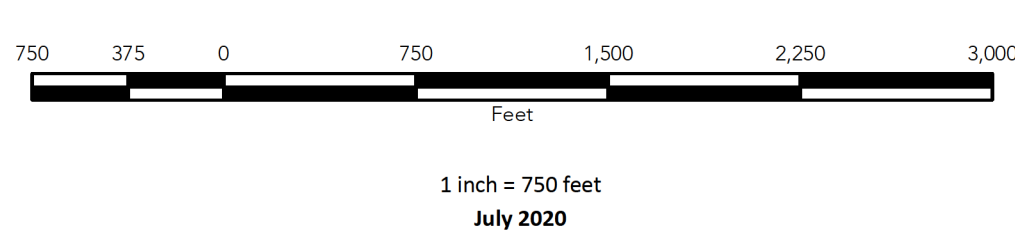


**Legend**

- Parcels
- Streams
- Water Impoundments
- 100-Year Floodplain (FP)

**Map Key**

- Agricultural Preservation (A)
- Rural Residential (RR)
- Suburban Residential (SR)
- Village (V)
- Woodland/Conservation (W/C)



**DISCLAIMER**  
This drawing is intended for reference and illustrative purposes only. It is neither a legally recorded map nor a survey and is not intended to be used as such. The information displayed is from a compilation of records, information, and data developed and obtained from various sources. The data layers were created from different sources at different scales, and the actual or relative geographic position of any feature is only as accurate as the source information. If discrepancies are found, please contact the Columbia County GIS Office at (570) 387-4900.  
  
Planimetric and topographic data were compiled photogrammetrically to National Map Accuracy Standards for 1" = 200' and 1" = 50' scale mapping using first-order fully analytical digital stereo plotters from aerial photography dated April 2016. This mapping was controlled analytically from ground points captured using first-order global positioning systems equipment. Planimetric coordinates were based on the Pennsylvania State Plane Coordinate System, North Zone, and North American Datum 1983.  
  
The County of Columbia makes no representations or warranties as to the suitability of this information for your own purpose, to the extent you use or implement this information in your own setting, you do so at your own risk. In no event will the County of Columbia be liable for any damages whatsoever, whether direct, consequential, incidental, special, or any claim for attorney fees, arising out of the use or inability to use the information provided herewith.

