

ZONING

27 Attachment 8

Township of Lower Macungie

**LOWER MACUNGIE TOWNSHIP SMALL WIRELESS COMMUNICATIONS
FACILITY DESIGN GUIDELINES
[Added by Ord. No. 2020-01, 2/6/2020]**

Section 1 - Antenna and Equipment Design Parameters

- (A) All small wireless communications facilities must —
- (1) not obstruct the safe operation of traffic control equipment or street lights;
 - (2) not interfere with driver or pedestrian sight lines or clear zones for transportation or pedestrians;
 - (3) comply with applicable federal and state standards regarding pedestrian access and movement;
 - (4) comply with generally-applicable health and safety codes;
 - (5) be constructed in a manner to minimize physical damage to private property;
 - (6) not include advertisements.
 - (7) not be placed or located where there is likely damage from flood waters, stormwater inundation or snow plows and snow piles.
 - (8) where not specifically called out, comply with all other provisions of Lower Macungie Township Zoning Ordinance (Part 27).
- (B) Each antenna associated with a small wireless communications facility may be up to three cubic feet in volume and, —
- (1) when mounted at the top of a pole, whether or not enclosed —
 - (a) an initial installation will not exceed six feet above the top of the pole;
 - (b) a collocated installation will be no taller than necessary to house the collocation;
 - (2) when mounted at the top of a pole, a pole-top extension shall be no taller than necessary for separation from other attachments;
 - (3) when mounted on a lateral standoff bracket on a pole, the antenna shall protrude no more than necessary to meet clearances;

LOWER MACUNGIE CODE

- (4) when mounted on or within an existing or replacement decorative pole or specifically designed structure such as street signs, street lights, traffic signal mastheads and the like, shall fully conform to the design aesthetics of the original pole or structure, including the design, style, color and finish;
 - (5) when mounted on another structure, shall not impair the function of the structure.
 - (6) unless technically unable to do so due to effective operation, shall be shrouded and match the color of the existing pole as per Section 2.
- (C) Related equipment associated with an antenna shall be —
- (1) flush-mounted or as near to flush as possible;
 - (2) if mounted on a pole other than at the top, shall provide a minimum of 12 feet above streets, driveways and sidewalks;
 - (3) if located in a ground-mounted cabinet shall meet the design, style, color matching the pole as closely as possible and shielded utilizing shrubs, grasses or perennials or public facilities such as benches, public art, etc.
 - (4) if mounted on a pole, concealed in a shrouded enclosure matching the pole color in all areas of the Township and additionally shielded from view by interchangeable decorative banners as shown in Section 2 in the following areas of the Township:
 - (a) On Hamilton Boulevard
 - (b) In the East Texas Village 1, 2 or 3 (ETV1, ETV2, ETV3) Districts
 - (c) On PA Route 100 from the intersection with Alburdis Road to the boundary with the Borough of Macungie.
 - (d) On the road frontage of any public or private school.
 - (e) On the road frontage of any Lower Macungie Township owned park or municipal complex property.
- (D) Replacement poles shall be —
- (1) installed within three feet of the location for the original pole;
 - (2) of a material and dimensions that matches as closely as feasible existing adjacent poles, or consistent with any published local standards for utility pole placements.
- (E) New poles shall be —
- (1) be aligned with the predominate pattern of existing adjacent structures;

ZONING

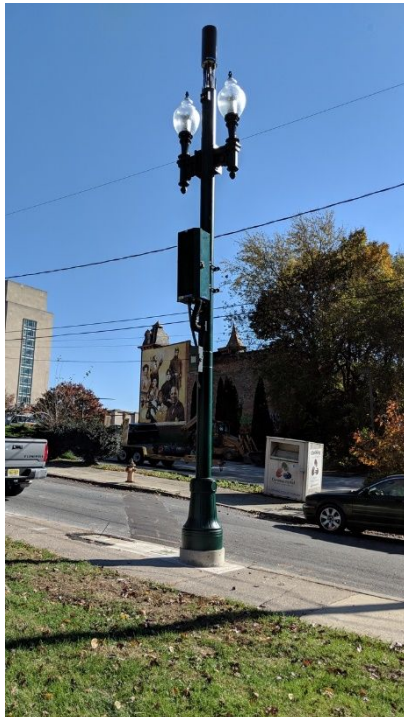
- (2) not be located directly in front of storefront windows, primary walkways, primary windows, or primary egress points to any buildings.
 - (3) constructed of a non-reflective material or shall feature a non-reflective coating.
- (F) Cables and wires associated with a small wireless communications facility —
- (1) shall be installed within the pole;
 - (2) shall be flush-mounted to the pole where internal installation is not feasible; or
 - (3) shall be encased in pole color and finish matching cover or conduit when flush-mounted to the pole.
- (G) An electric meter, if required, will be pole-mounted where feasible to the extent authorized by the pole owner and electric provider.

Section 2 - Acceptable Design Standards.

An application for placement of a co-located small wireless communications facility in the right-of-way that is substantially consistent with one of the following examples and all other portions of this ordinance, shall be considered favorably by the Zoning Officer via a standard permit application under the township's applicable process.

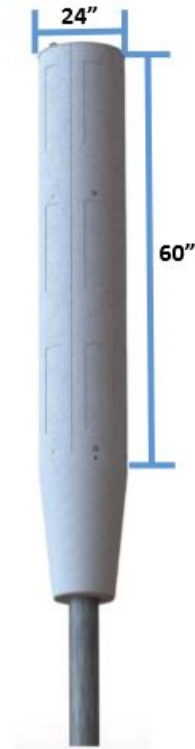
LOWER MACUNGIE CODE

Example of street light pole and ornamental street light with top-mounted equipment:



ZONING

Example of utility pole with pole-top antenna and pole-mounted equipment and shrouds:

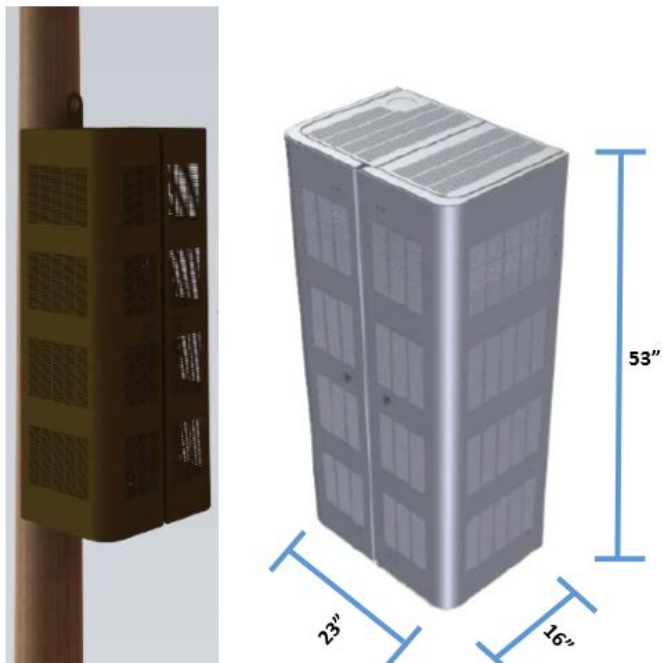


LOWER MACUNGIE CODE

Example of a street light utilizing required banners to conceal equipment:



Example of appropriate pole mounted shielding/shrouding enclosure:



ZONING

Example of an entirely new individual and independent poles:



LOWER MACUNGIE CODE

Section 3 - Definitions.

(A) “Collocation,” consistent with 47 C.F.R. 1.6002(g) means:

- (1) Mounting or installing an antenna facility on a pre-existing structure, and/or
- (2) Modifying a structure for the purpose of mounting or installing an antenna facility on that structure.

(B) “Decorative Pole” means a pole that is specially designed and placed for aesthetic purposes and on which no appurtenances or attachments, other than a small wireless communications facility, life-safety devices, lighting, or specially designed informational or directional signage or temporary holiday or special events attachments, have been placed or are permitted to be placed according to nondiscriminatory standards.

(C) “Small wireless communications facilities,” consistent with 47 C.F.R. 1.6002(1), means facilities that meet each of the following conditions:

- (1) The facilities — (i) are mounted on structures 50 feet or less in height including their antennas as defined in 47 C.F.R. 1.1320(d), or (ii) are mounted on structures no more than 10% taller than other adjacent structures, or (iii) do not extend existing structures on which they are located to a height of more than 50 feet or by more than 10%, whichever is greater;
- (2) Each antenna associated with the deployment, excluding associated antenna equipment (as defined in the definition of antenna in 47 C.F.R. 1.1320(d)), is no more than three cubic feet in volume;
- (3) All other wireless equipment associated with the structure, including the wireless equipment associated with the antenna and any pre-existing associated equipment on the structure, is no more than 28 cubic feet in volume; (Thoughts? Industry recommendation).
- (4) The facilities do not require antenna structure registration under 47 C.F.R. Subpart A, Part 17;
- (5) The facilities are not located on Tribal lands, as defined under 36 C.F.R. 800.16(x); and
- (6) The facilities do not result in human exposure to radiofrequency radiation in excess of the applicable safety standards specified in 47 C.F.R. 1.1307(b).

(D) Terms not defined in this Section or elsewhere in the Municipal Code or other published guidelines shall refer to the terms as defined under 47 C.F.R. 1.6001, et seq.