

PLANNING AND ZONING

20 Attachment 2

City of Albany

**EXHIBIT A
TO ORDINANCE #04-09**

AMENDMENTS TO THE ZONING MAP

Amendments to the Zoning Map of the City of Albany (Subsection 20.12.030) are enacted by Ordinance #04-09, as described below and as depicted on portions of the Zoning map on the page that follows the descriptions:

1. From Highway Commercial (C-2) to San Pablo Commercial (SPC):

a. East side of San Pablo Avenue, to a depth of 100 feet from the east right-of-way line of San Pablo Avenue, between the north and south city limits.

b. West side of San Pablo Avenue, to a depth of 100 feet from the west right-of-way line of San Pablo Avenue, between the north city limits and Buchanan Street.

c. Properties fronting on Solano Avenue between Kains Avenue and Adams Street.

2. From Residential Medium Density (R-2) to San Pablo Commercial (SPC):

West side of San Pablo, to a depth of 100 feet from the west right-of-way line of San Pablo Avenue, between the southern boundary of the existing Public Facilities (PF) district and the south city limits.

3. From Commercial Expansion (C-E) to San Pablo Commercial (SPC):

a. West side of the 400 block of Kains Avenue to a depth of 100 feet from the west right-of-way line of Kains Avenue.

b. A portion of the 800 block of the west side of Kains Avenue consisting of Assessor's parcels 10 and 11, Block 2799.

c. East side of the 500 block of Adams Street to a depth of 100 feet from the east right-of-way line of Adams Street.

ALBANY CODE

d. A portion of the 900 block of the east side of Adams Street, consisting of that portion of Assessor's parcel 26-6, Block 2721, that fronts on Adams Street and extends approximately 100 feet from the east right-of-way line of Adams Street.

4. From Commercial Expansion (C-E) to Residential High Density (R-3):

a. West side of the 500, 600, 700, 900, 1000 and 1100 blocks of Kains Avenue to a depth of 100 feet from the west right-of-way line of Kains Avenue (excepting property fronting on Solano Avenue that is in the SPC District.)

b. A portion of the 800 block of the west side of Kains Avenue consisting of Assessor's parcel 9-1, Block 2799 and that portion of parcel 1-1 that extends approximately 100 feet from the west right-of-way line of Kains Avenue.

c. East side of the 600, 700 and 800 blocks of Adams Street to a depth of 100 feet from the east right-of-way line of Adams Street (excepting property fronting on Solano Avenue that is in the SPC District)

d. Portions of the 900 block of the east side of Adams Street consisting of Assessor's parcels 25-7 and 35 through 40, Block 2721, plus the portion of Tract 7227 (known as Albany Commons) that extends to a depth of 100 feet from the east right-of-way line of Adams Street.

5. Application of overlay districts to certain properties in the San Pablo Commercial (SPC) District:

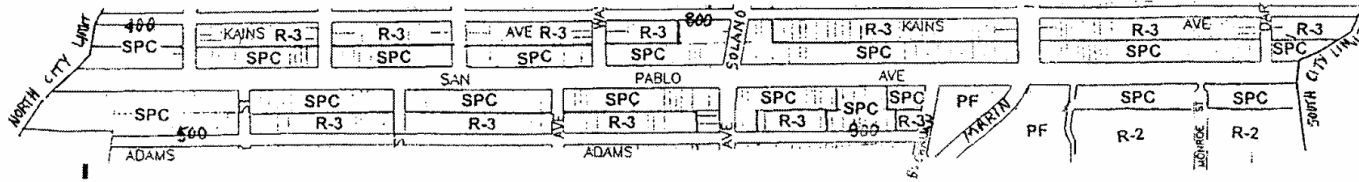
a. Commercial Node Overlay to properties fronting along San Pablo Avenue and Solano Avenue, within 200 feet of the rights-of-way of the intersection of the two streets.

b. Residential-Commercial Transition Overlay (RCT) to the entire 400 block of San Pablo Avenue/Kains Avenue.

c. Planned Residential/Commercial Overlay (PRC) to:

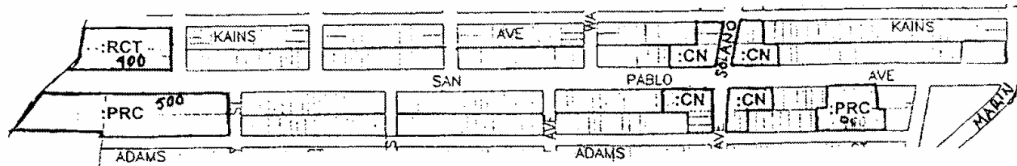
1. The entire 500 Block of San Pablo Avenue/Adams Street.
2. Assessor's parcel 26-6, Block 2721 (known as Town Centre) in the 900 block of San Pablo Avenue/Adams Street.

**PLANNING AND ZONING
EXHIBIT A
AMENDMENTS TO ZONING MAP**



ZONING DISTRICTS, AS AMENDED, SAN PABLO AVENUE CORRIDOR

- SPC = San Pablo Commercial District
- R-3 = Residential High Density District
- R-2 = Residential Medium Density District (as existing)
- PF = Public Facilities District (as existing)



OVERLAY ZONING DISTRICTS, AS APPLIED BY AMENDMENT

- :PRC = Planned Residential/Commercial Overlay District
- :RCT = Residential-Commercial Transition Overlay District
- :CN = Commercial Node Overlay District