

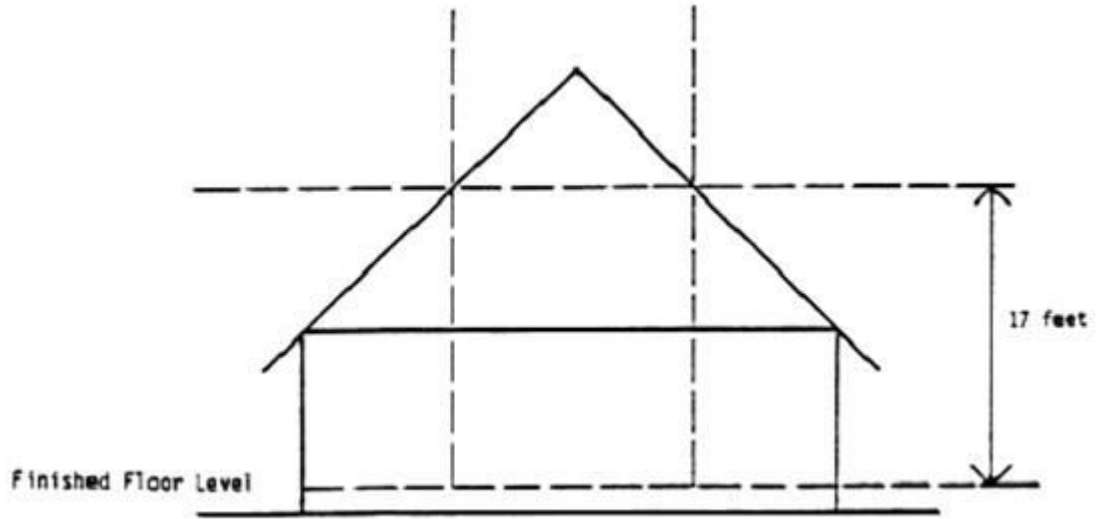
ZONING

16 Attachment 1

SUPPLEMENTAL ILLUSTRATIONS FOR SECTION 16.04.313

ATTACHMENT A

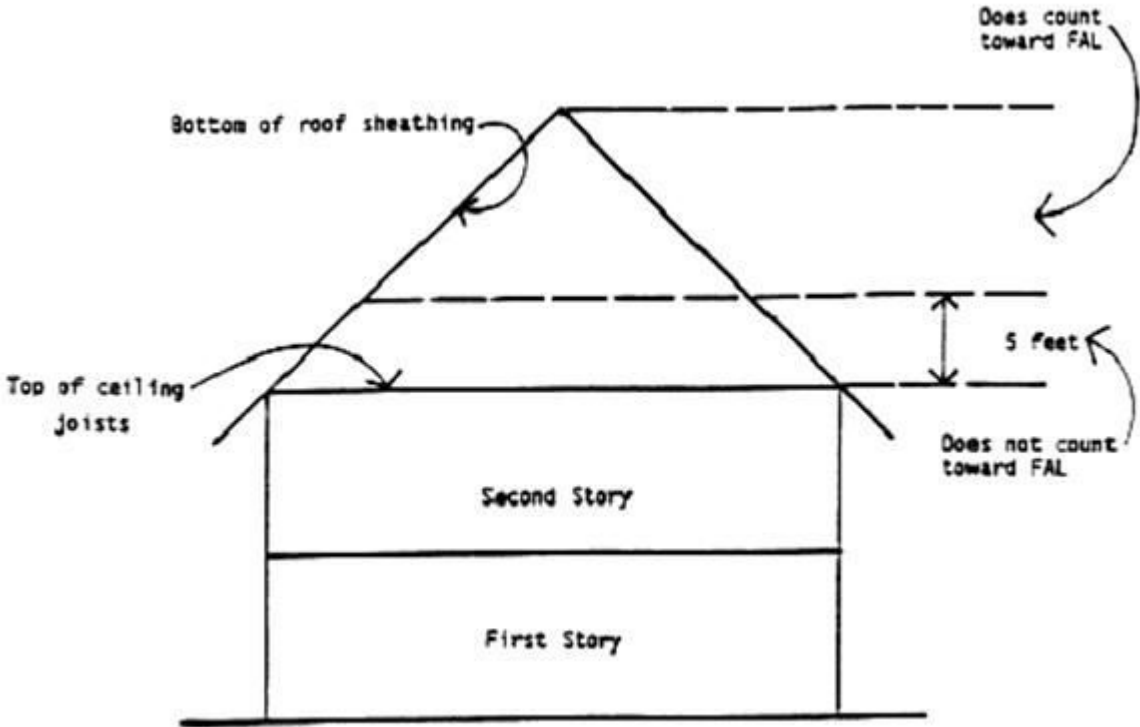
SINGLE STORY HOMES IN R-1 AND R-2 ZONING DISTRICTS



All floor area where the distance between the finished floor level and the roof directly above it measures 17 feet or more, shall be counted at 200% floor area.

MENLO PARK CODE

TWO STORY HOMES IN R-1 AND R-2 ZONING DISTRICT



In two-story homes, the square footage of all attic space where the distance between the top of the ceiling joists and the bottom of the roof sheathing measures five feet or more, shall count as additional floor area.