

LAND DEVELOPMENT AND PROCEDURES

163 Attachment 9

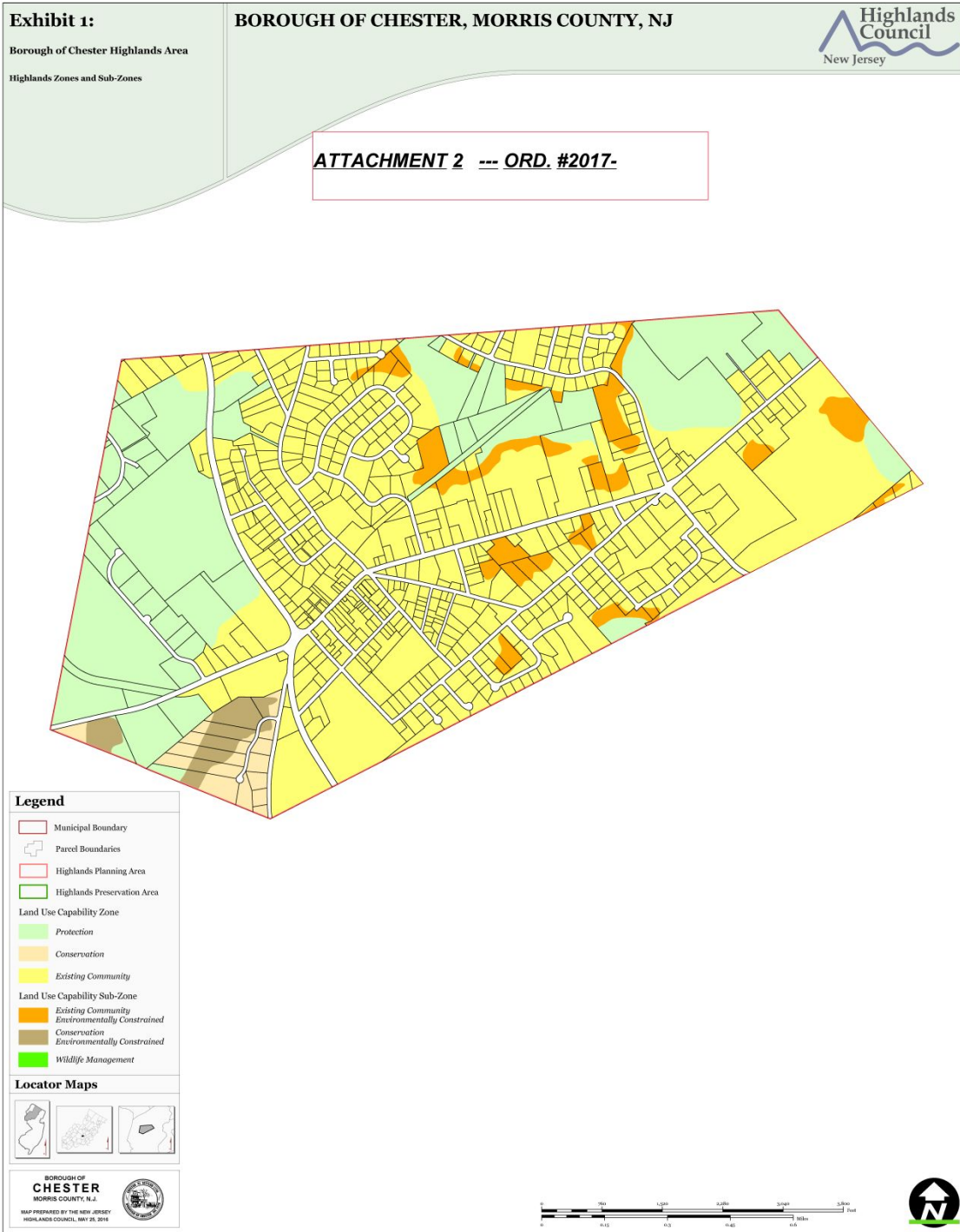
Borough of Chester

Appendix F

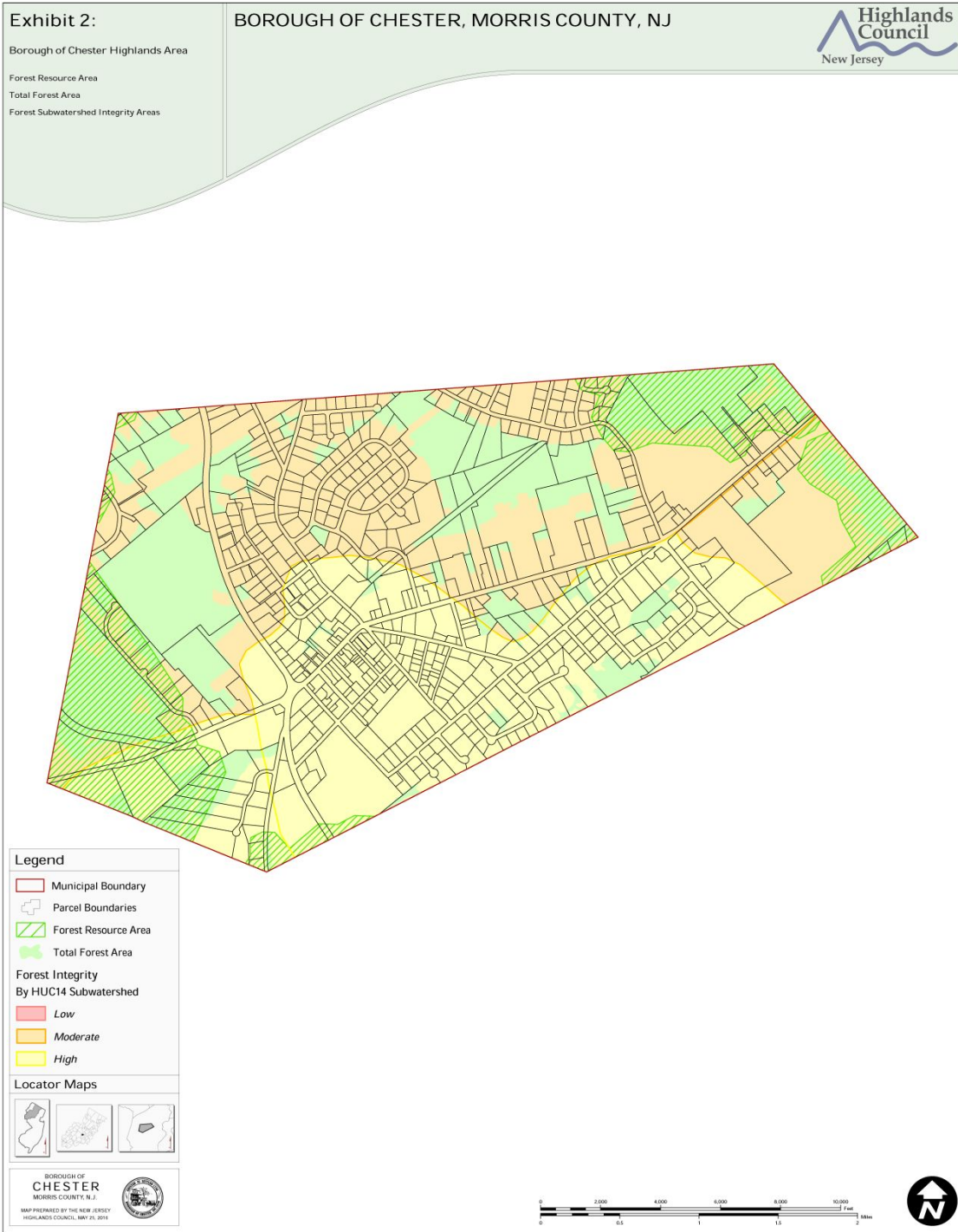
Exhibits

- Exhibit 1. Highlands Planning Area, Highlands Zones and Sub-Zones
- Exhibit 2. Forest Resource Area
- Exhibit 3. Highlands Open Waters
- Exhibit 4. Riparian Area
- Exhibit 5. Steep Slope Protection Area
- Exhibit 6. Critical Wildlife Habitat
- Exhibit 7. Prime Groundwater Recharge Area Wellhead Protection Areas
- Exhibit 8. Agricultural Resource Area
- Exhibit 9. Highlands Historic, Cultural and Archaeological Resources
- Exhibit 10. Net Water Availability by HUC14 Subwatershed, Highlands Domestic Sewerage Facilities, Public Community Water Systems

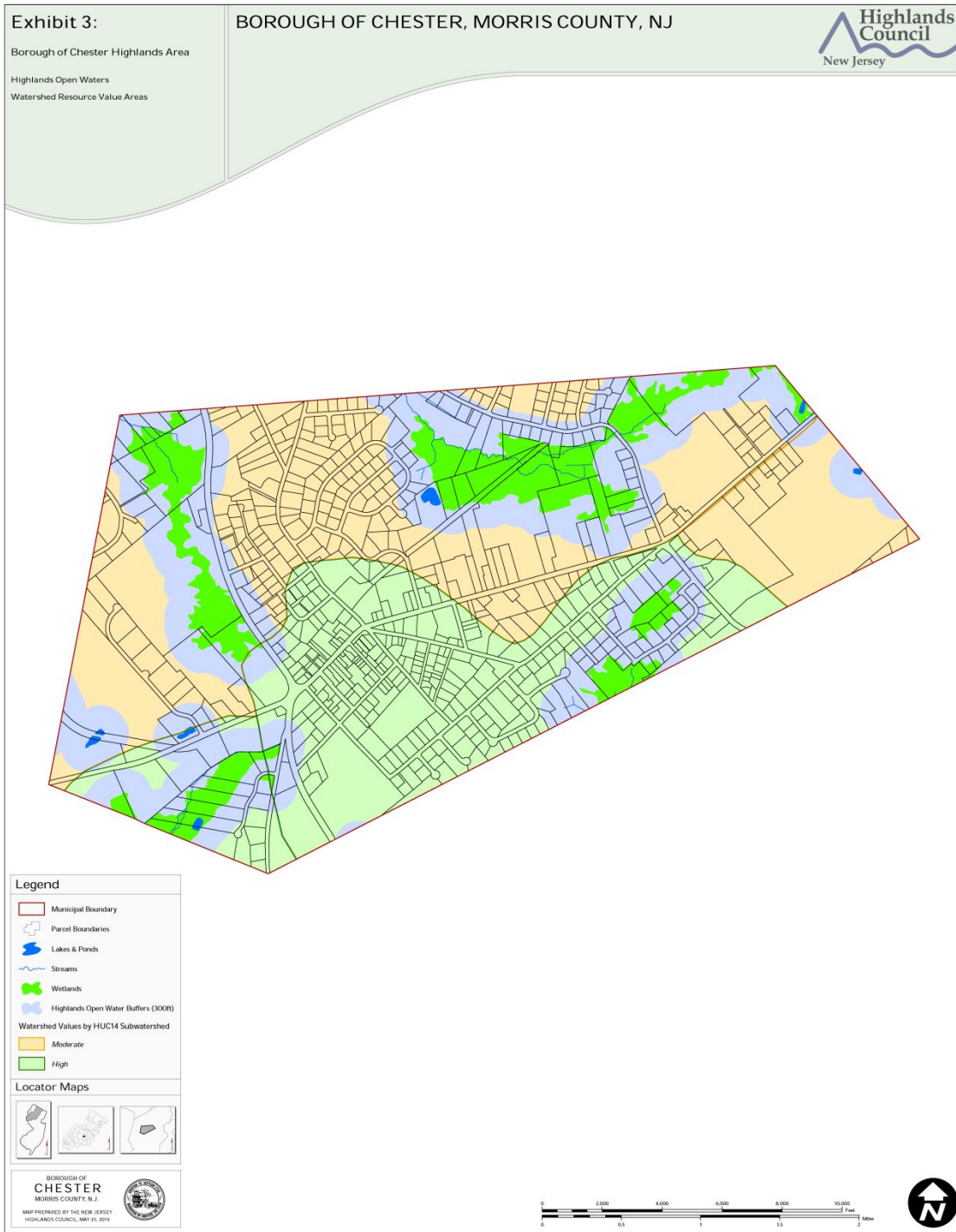
CHESTER CODE



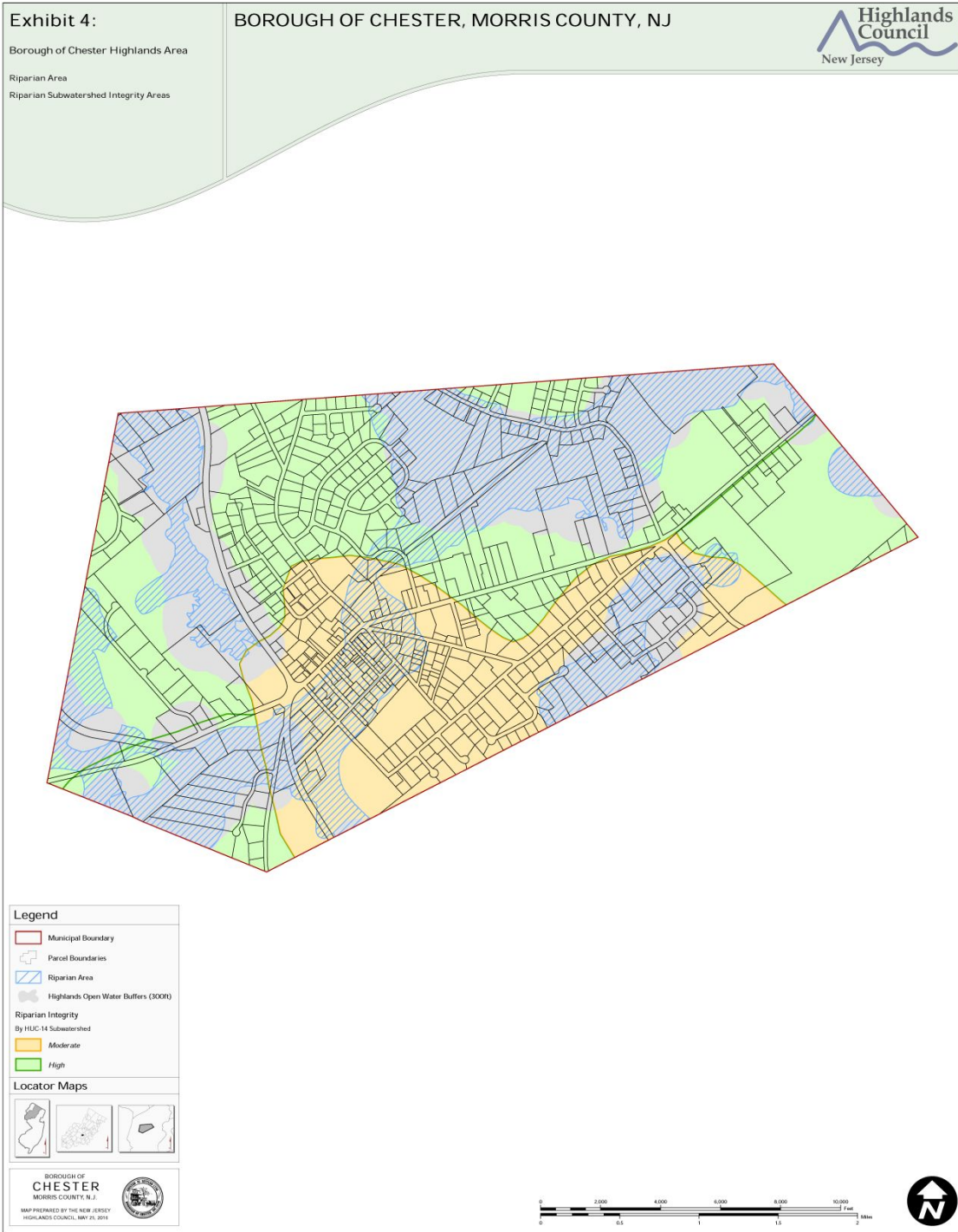
LAND DEVELOPMENT AND PROCEDURES



CHESTER CODE



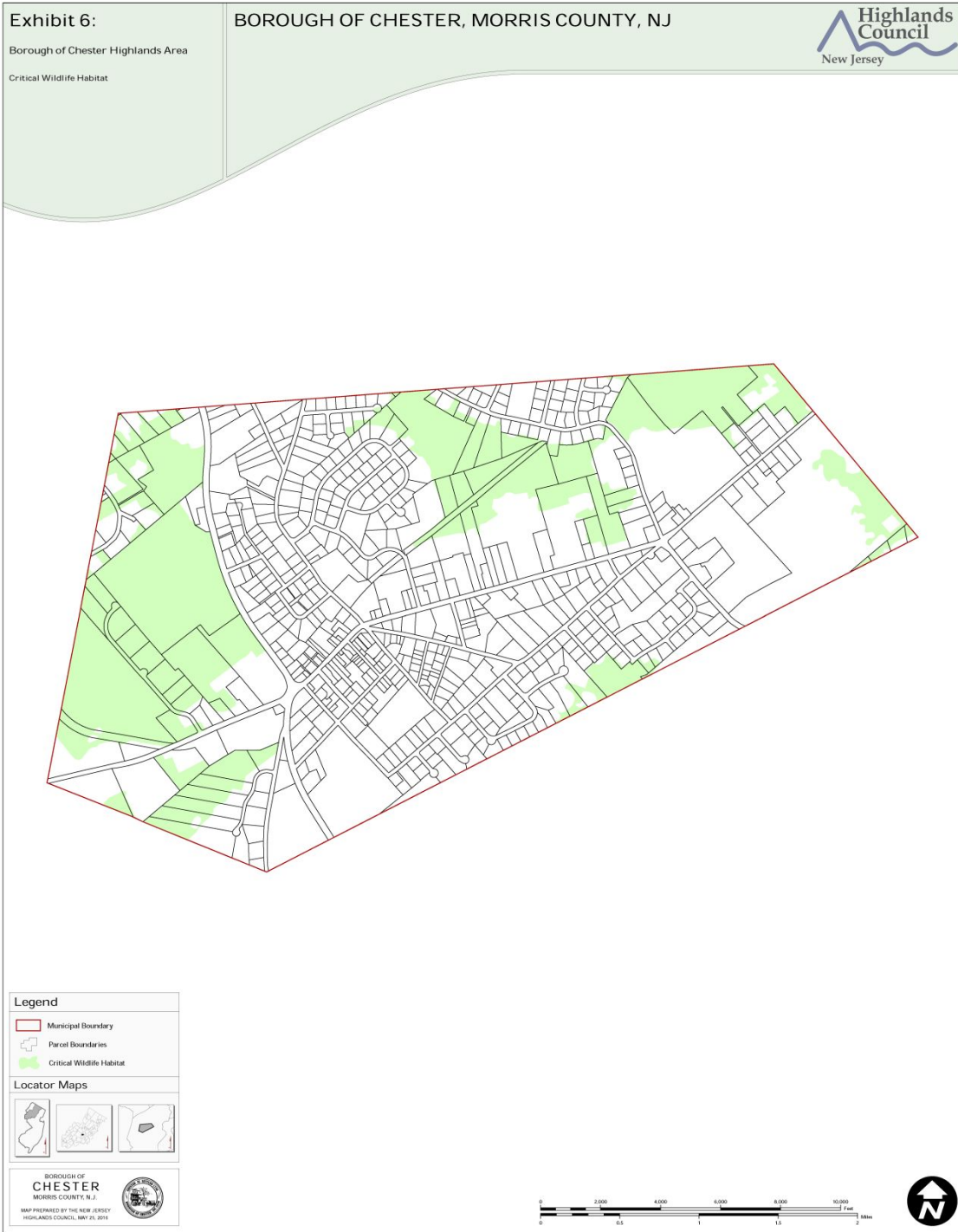
LAND DEVELOPMENT AND PROCEDURES



CHESTER CODE



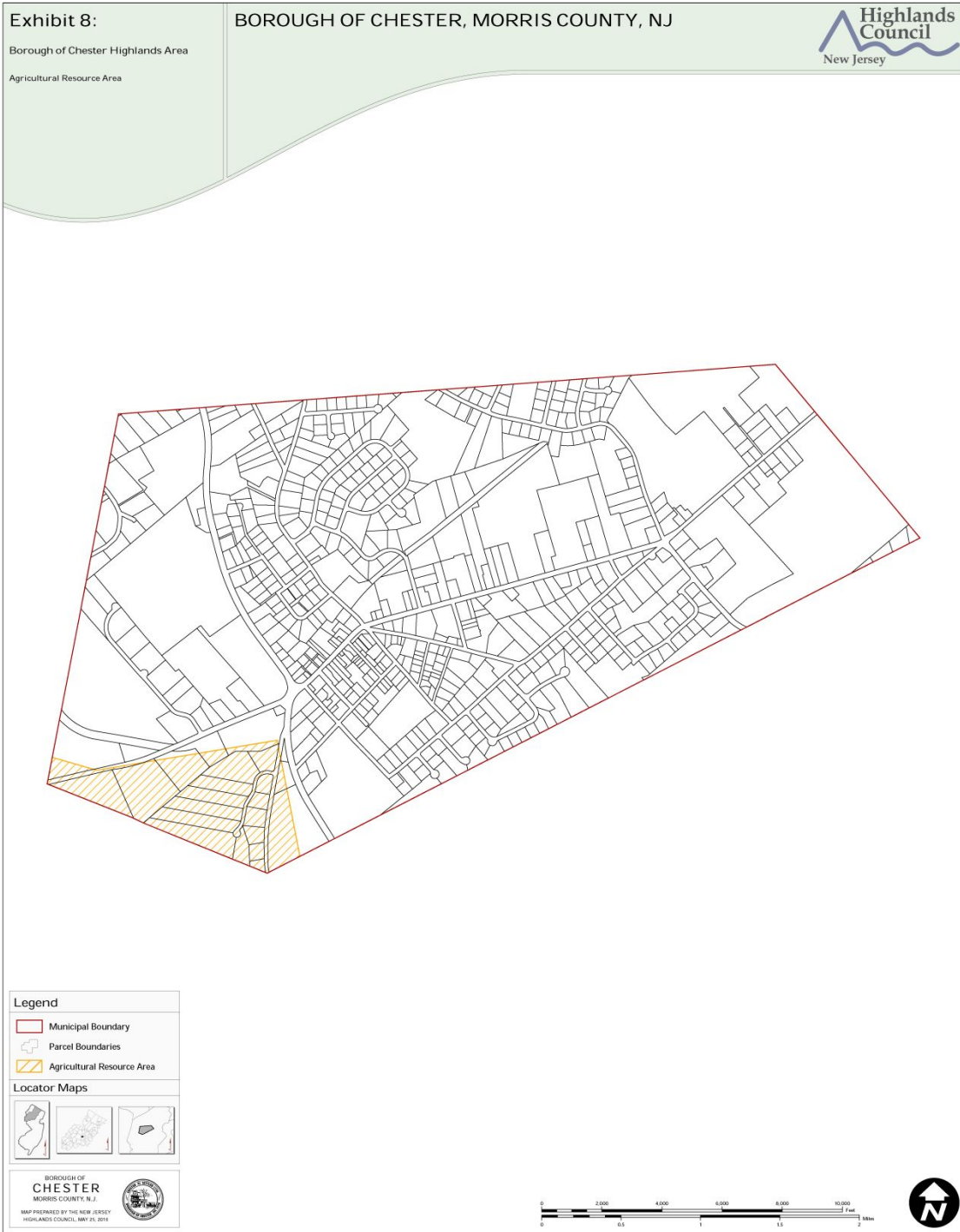
LAND DEVELOPMENT AND PROCEDURES



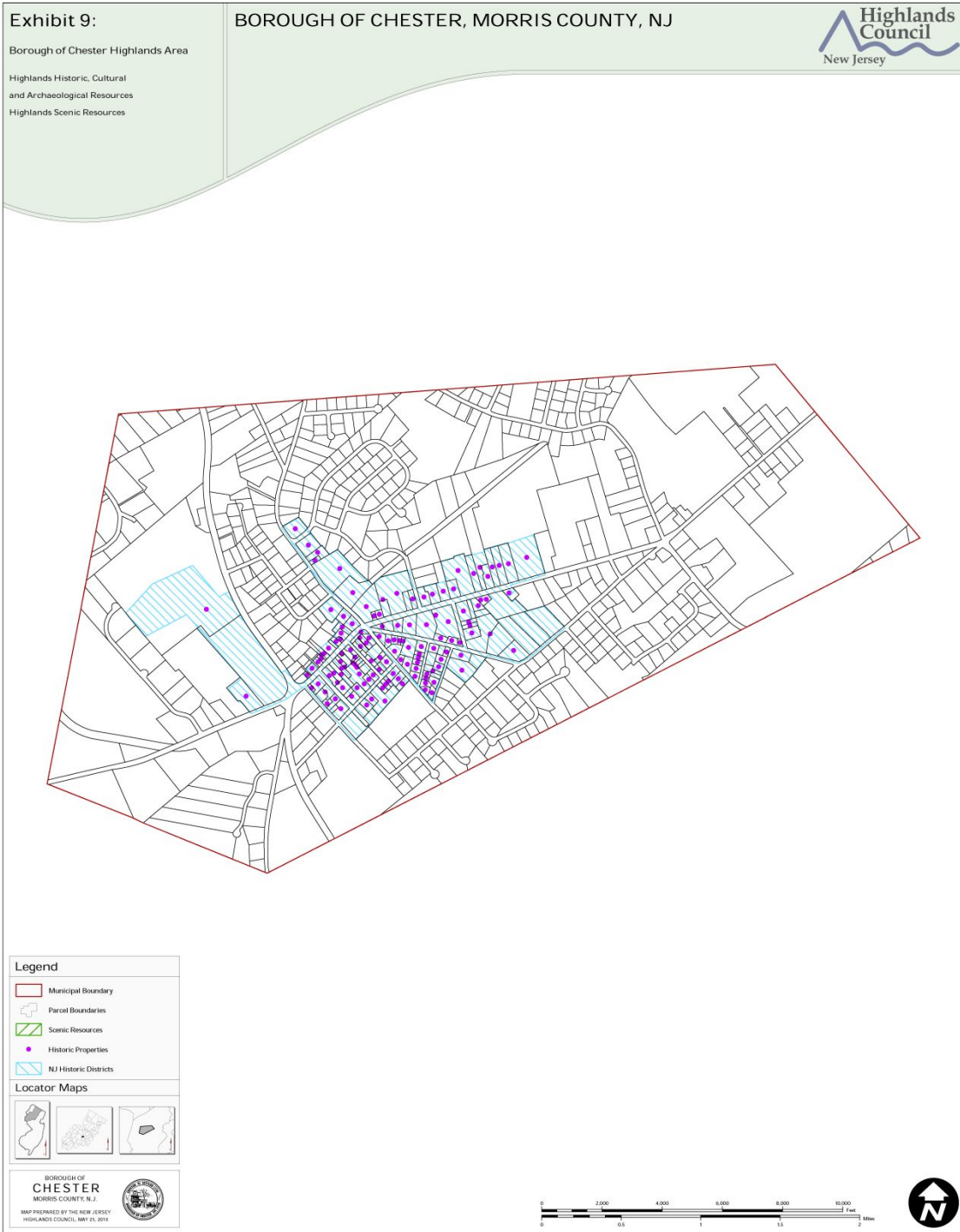
CHESTER CODE



LAND DEVELOPMENT AND PROCEDURES



CHESTER CODE



LAND DEVELOPMENT AND PROCEDURES

