

ZONING

430 Attachment 3

Township of Parsippany-Troy Hills

Illustrations

DEFINITION OF "STORY"

ILLUSTRATION A
DEFINING STORY AND FIRST STORY
MAXIMUM PERMITTED HEIGHT IN ZONE = 3 STORIES

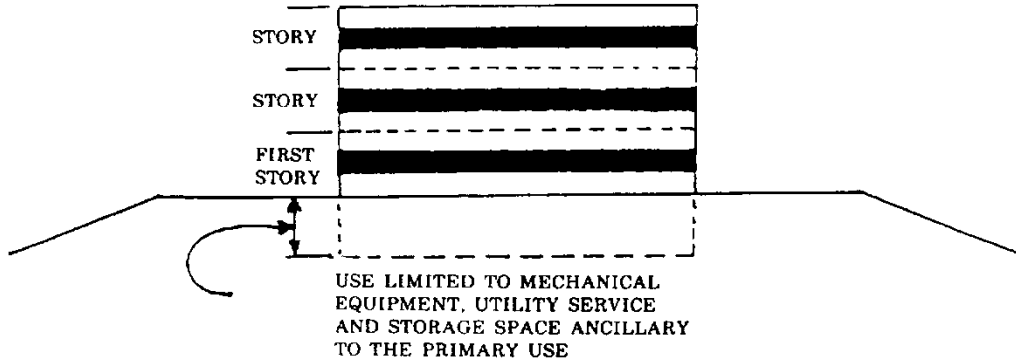


ILLUSTRATION B
DEFINING MAXIMUM HEIGHT IN STORIES WITH GARAGE PARKING
MAXIMUM PERMITTED HEIGHT IN ZONE = 3 STORIES

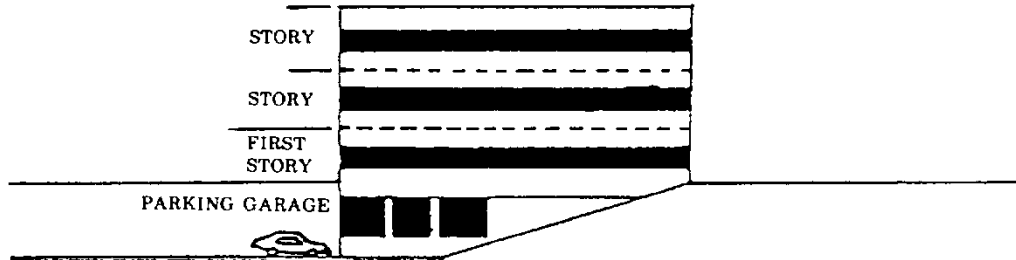
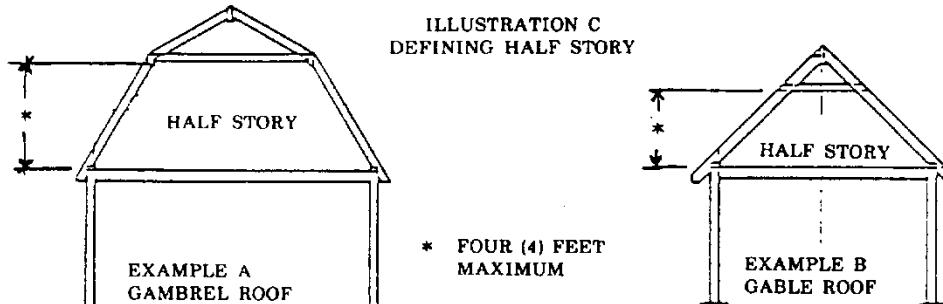
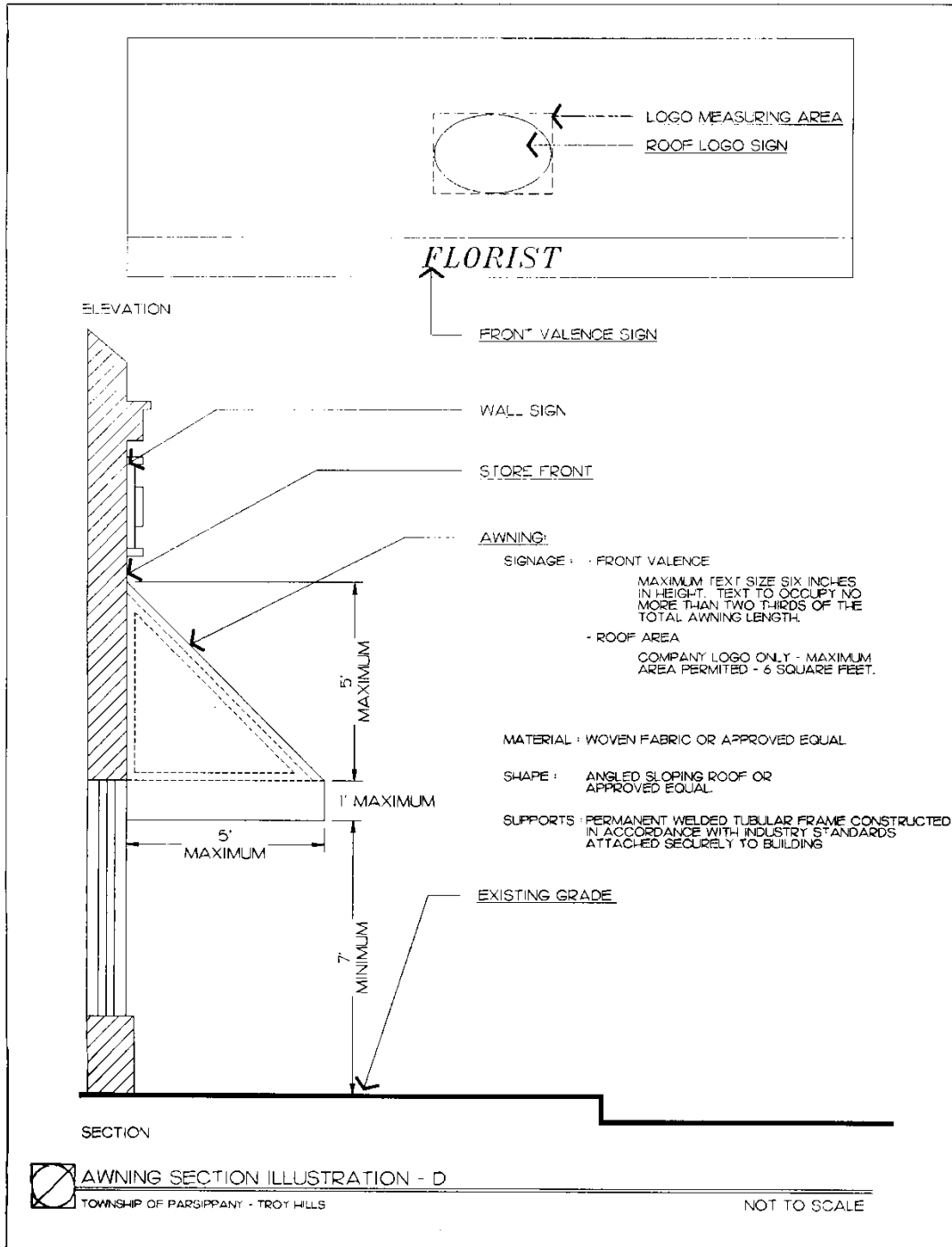


ILLUSTRATION C
DEFINING HALF STORY



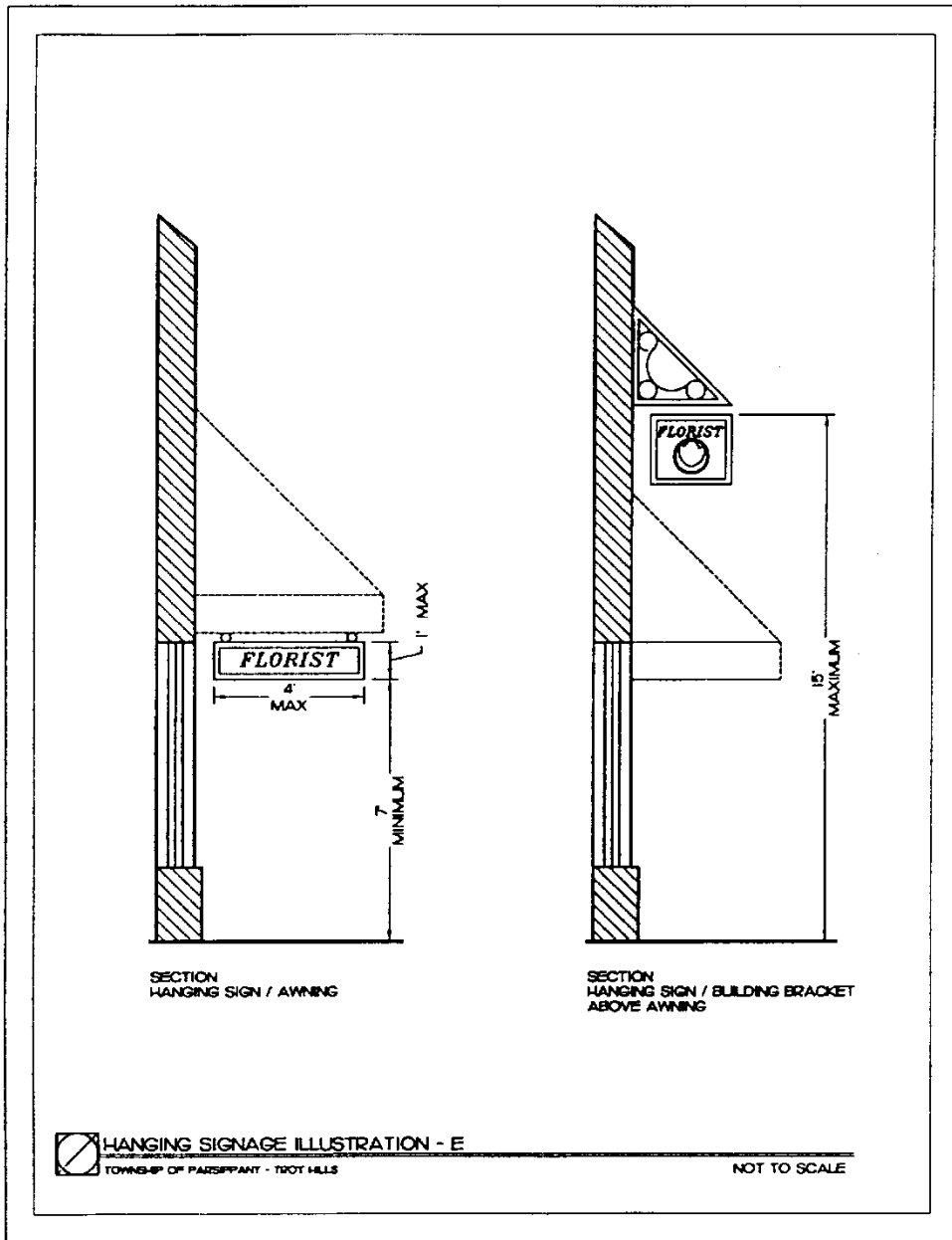
PARSIPPANY-TROY HILLS CODE

ILLUSTRATION D
AWNING



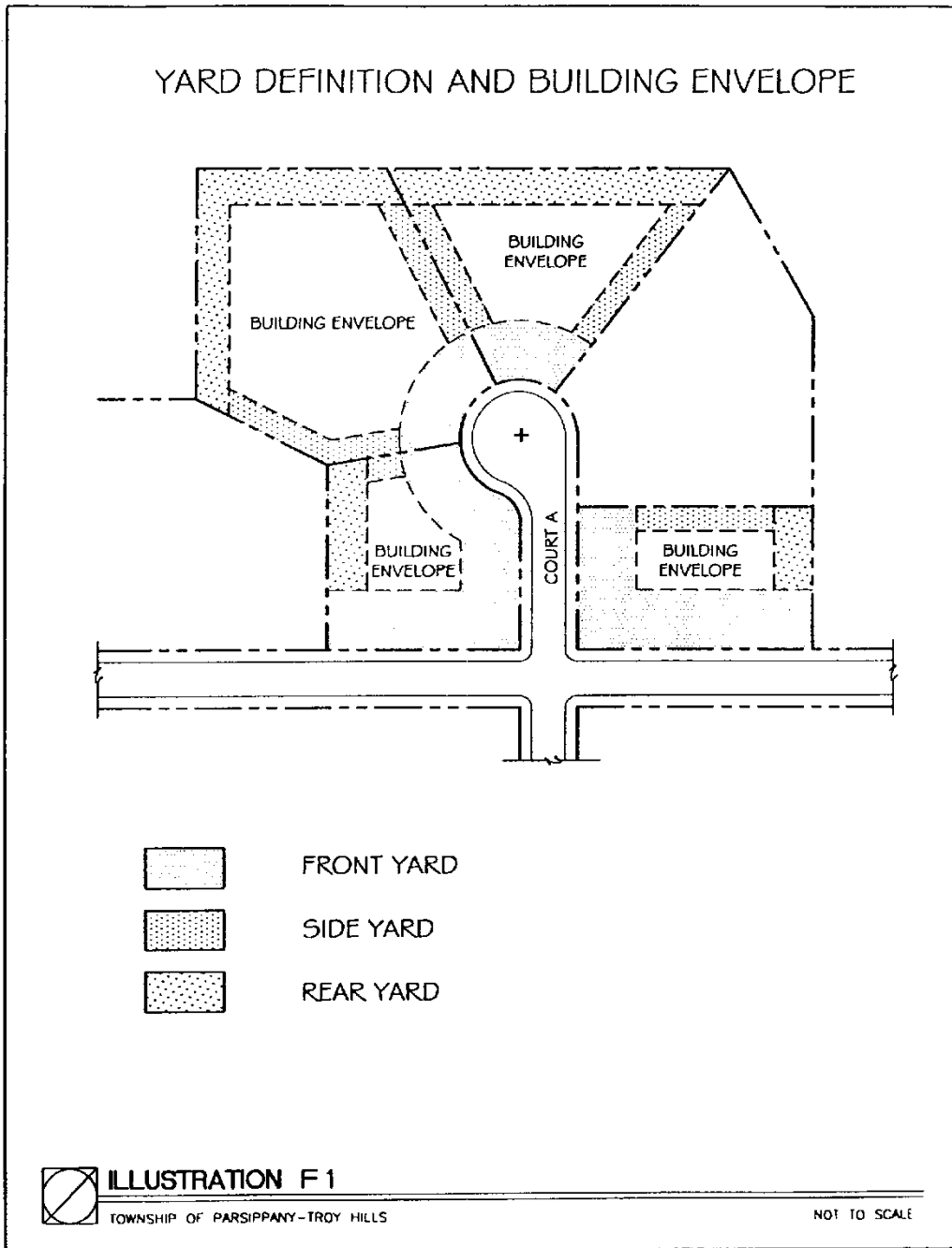
ZONING

ILLUSTRATION E
HANGING SIGNAGE



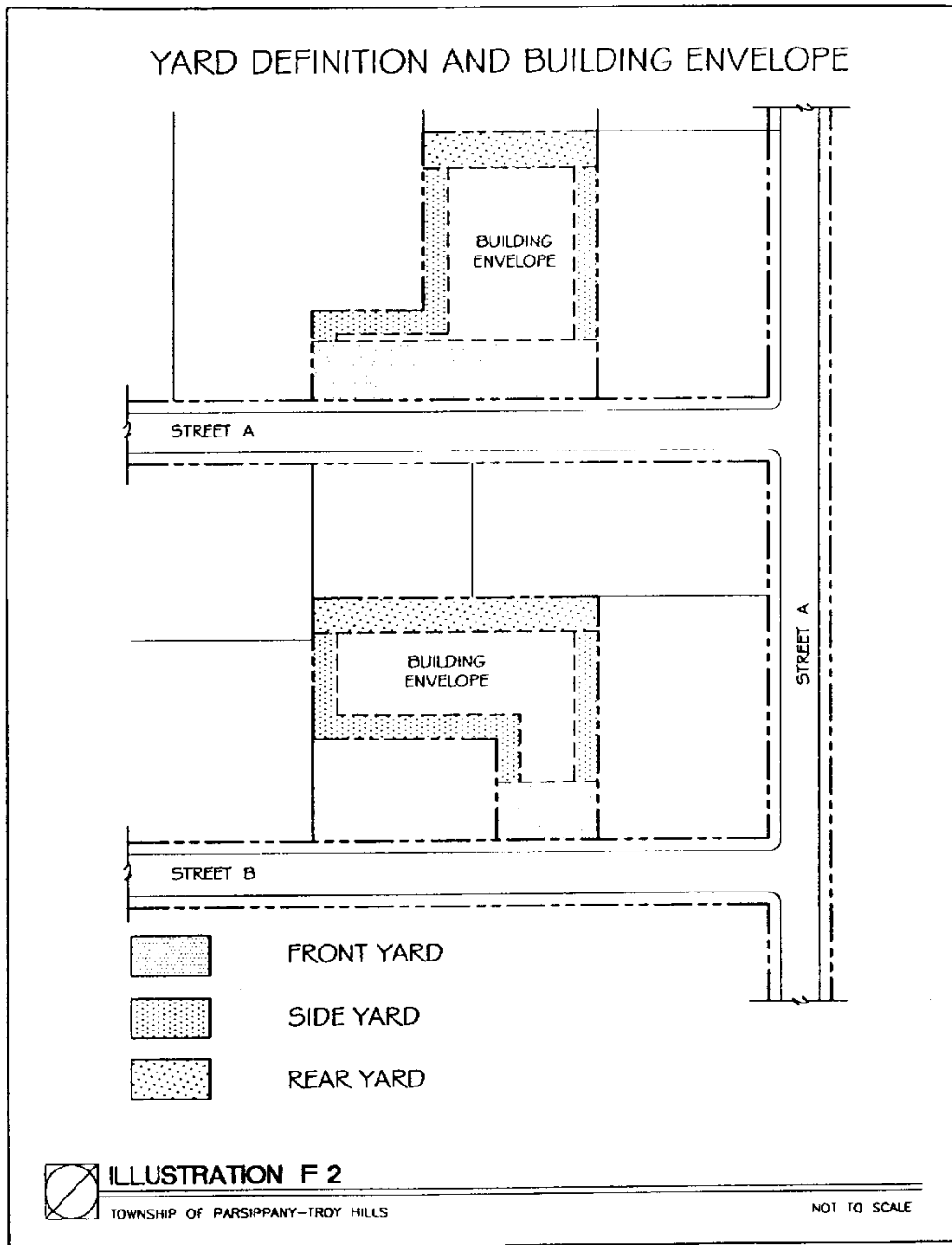
PARSIPPANY-TROY HILLS CODE

**ILLUSTRATION F1
YARD DEFINITION AND BUILDING ENVELOPE**

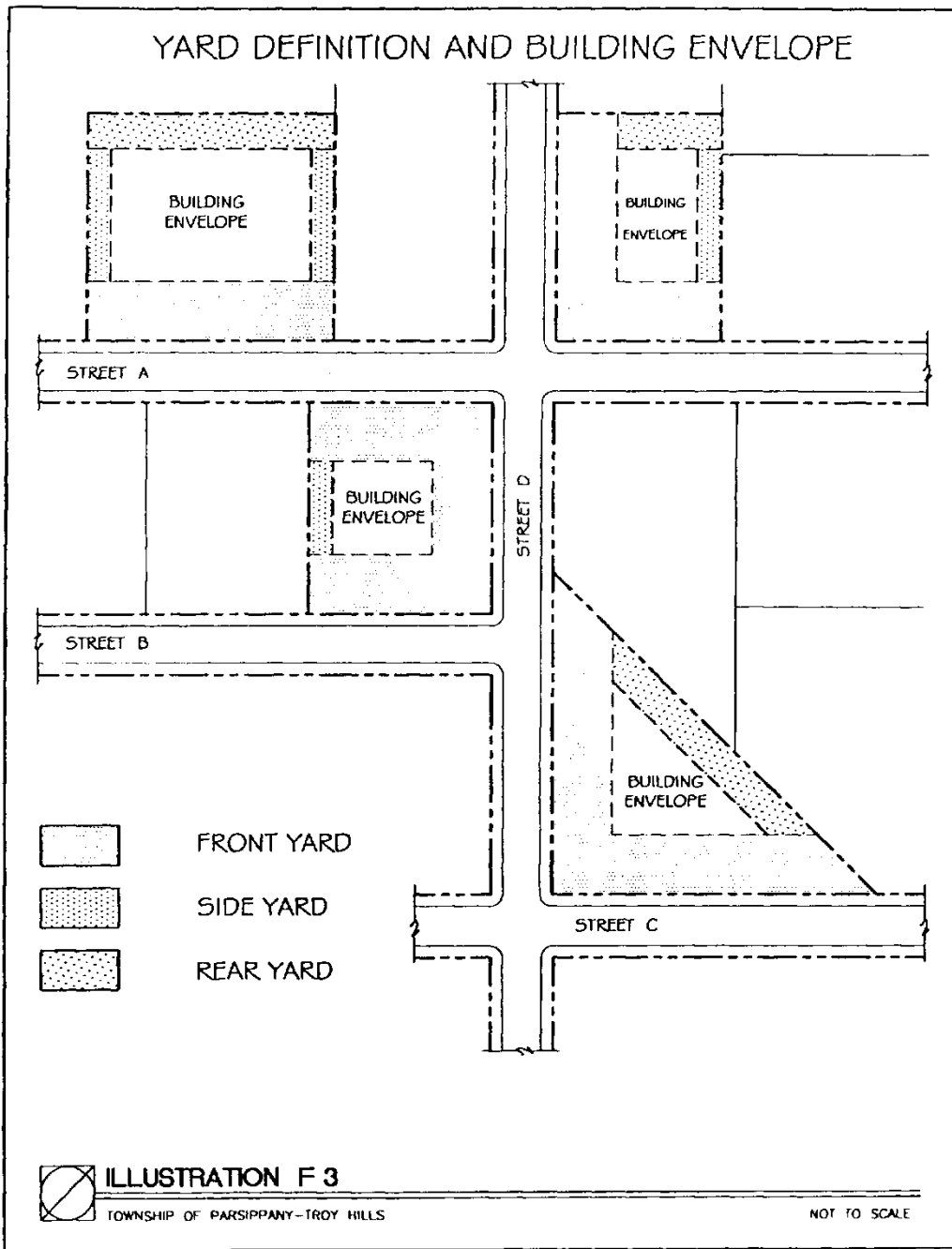


ZONING

**ILLUSTRATION F2
YARD DEFINITION AND BUILDING ENVELOPE**



**ILLUSTRATION F3
YARD DEFINITION AND BUILDING ENVELOPE**



ZONING

**ILLUSTRATION F4
YARD DEFINITION AND BUILDING ENVELOPE**

