

ZONING

230 Attachment 2

Detail Sheets

Belgian Block Curb Detail

Catch Basin Detail

Concrete Curb Detail

Concrete Sidewalk Detail

Depressed Curb Detail

Ditch Detail

General Parking Lot Layout

Handicap Parking Sign

Handicap Parking Striping Detail

Headwall Detail 1

Headwall Detail 2

Intersection of Two New Streets Detail

New Street with Old Narrow Road Detail

No Parking/No Standing Sign

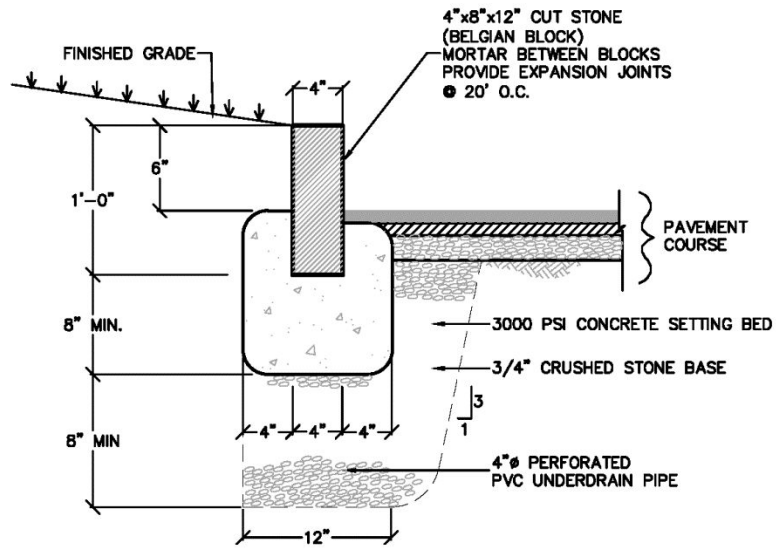
Parking Lot Pavement Section

Parking and Striping Detail

Rip-rap Detail

Road Opening Repair Detail

WESLEY HILLS CODE



NOTES:

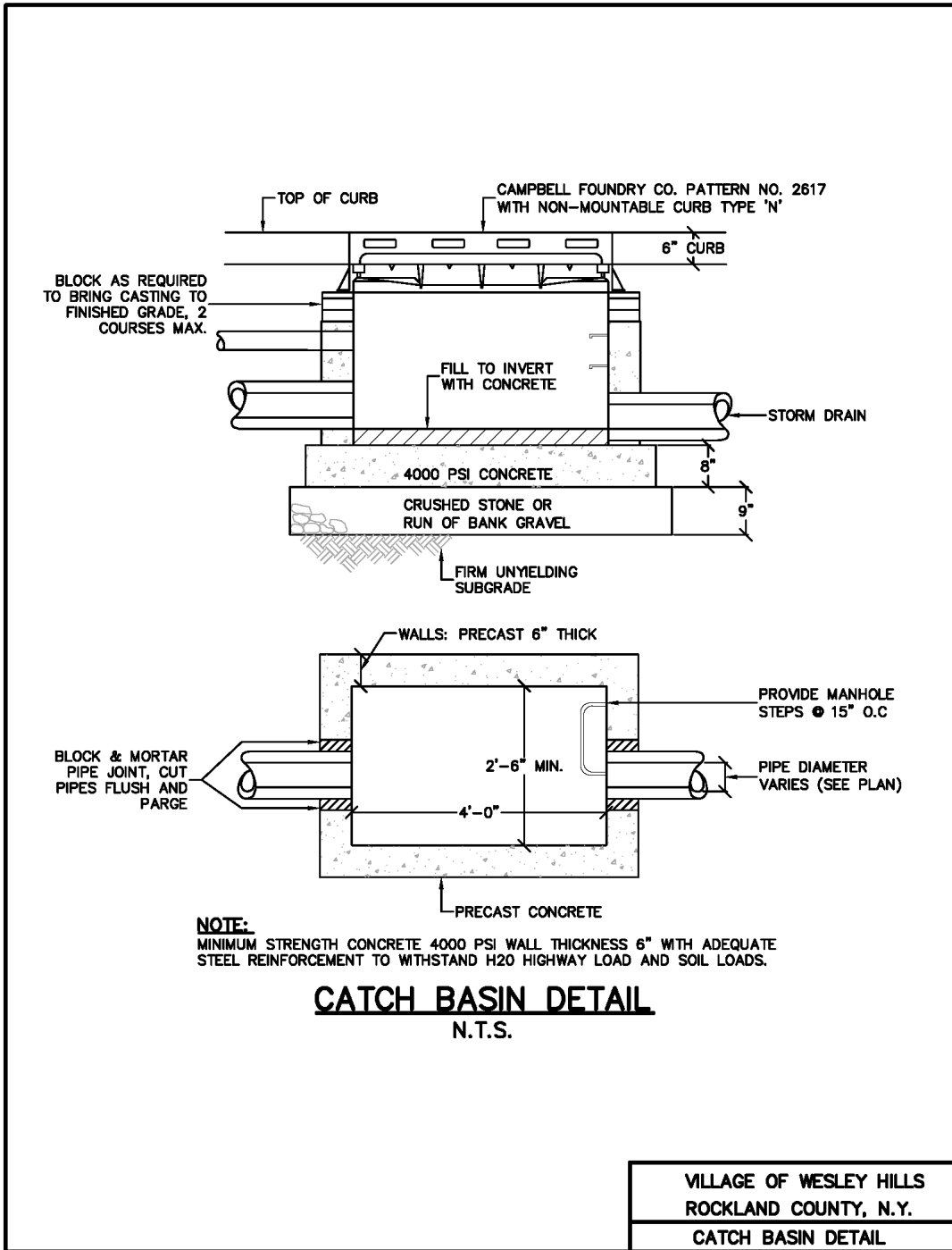
1. EXPANSION JOINTS OF 3/16" CELLULOSE OR SIMILAR MATERIAL SHALL BE PLACED AT TEN FOOT INTERVALS, TO FULL DEPTH OF CURB.
2. UNDERDRAIN MAY BE ELIMINATED IN PARKING LOTS AND OTHER NON-PUBLIC FACILITIES.

BELGIAN BLOCK CURB DETAIL

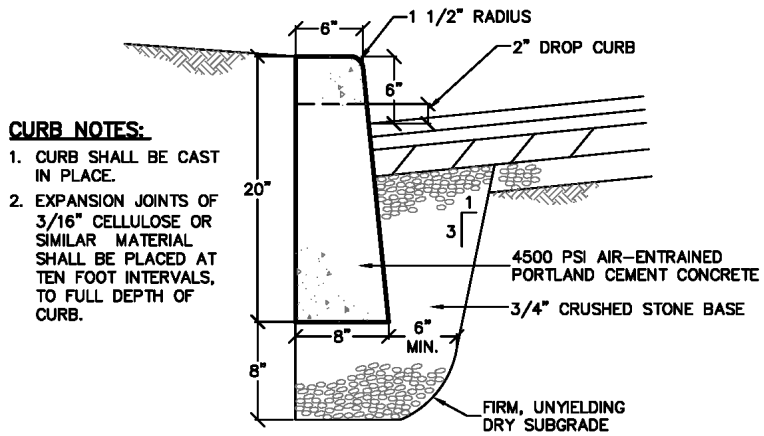
N.T.S.

VILLAGE OF WESLEY HILLS
ROCKLAND COUNTY, N.Y.
BELGIAN BLOCK CURB DETAIL

ZONING



WESLEY HILLS CODE



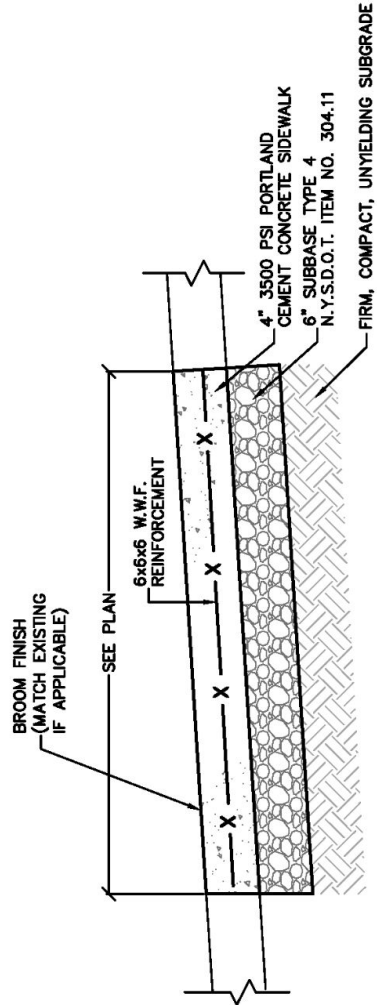
CURB NOTES:

1. CURB SHALL BE CAST IN PLACE.
2. EXPANSION JOINTS OF 3/16" CELLULOSE OR SIMILAR MATERIAL SHALL BE PLACED AT TEN FOOT INTERVALS, TO FULL DEPTH OF CURB.

CONCRETE CURB DETAIL
N.T.S.

VILLAGE OF WESLEY HILLS
ROCKLAND COUNTY, N.Y.
CONCRETE CURB DETAIL

ZONING



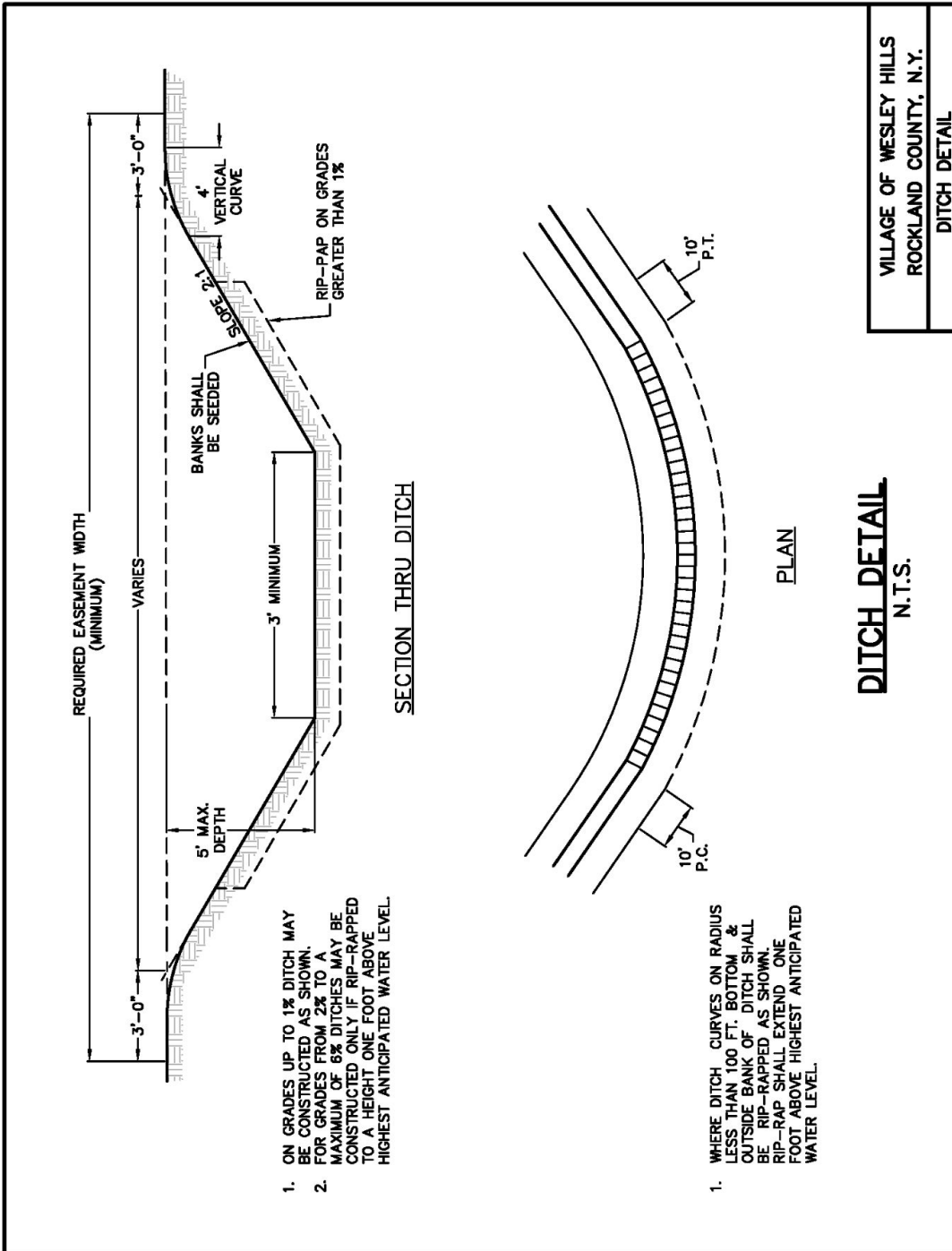
CONCRETE SIDEWALK NOTES

1. FULL DEPTH TRANSVERSE CONSTRUCTION JOINTS SHALL BE PLACED EVERY 18-20 FEET.
2. CONCRETE SURFACE SHALL BE SCORED AND TOOLED EVERY 5 FEET.
3. ALL EDGES SHALL BE FINISHED WITH AN EDGING TOOL WITH A RADIUS OF 1/4 INCH.
4. A 3/4 INCH BITUMINOUS JOINT FILLER SHALL BE PLACED AT ALL JOINTS BETWEEN SIDEWALK, CURB, PAVEMENT, BUILDING, ETC.
5. THE CONCRETE SHALL BE FINISHED TO PRODUCE A SMOOTH FINISH AND THEN LIGHTLY BROOMED TO A UNIFORM TEXTURE.
6. A CLEAR MEMBRANE CURING COMPOUND SHALL BE USED UPON COMPLETION OF FINISHING.
7. ALL SIDEWALKS SHALL ADHERE TO ADA GUIDELINES.

CONCRETE SIDEWALK DETAIL
N.T.S.

VILLAGE OF WESLEY HILLS ROCKLAND COUNTY, N.Y.
CONCRETE SIDEWALK DETAIL

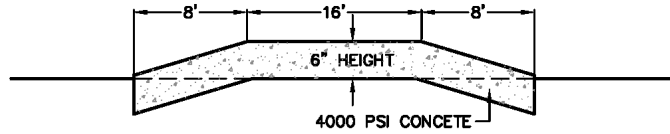
ZONING



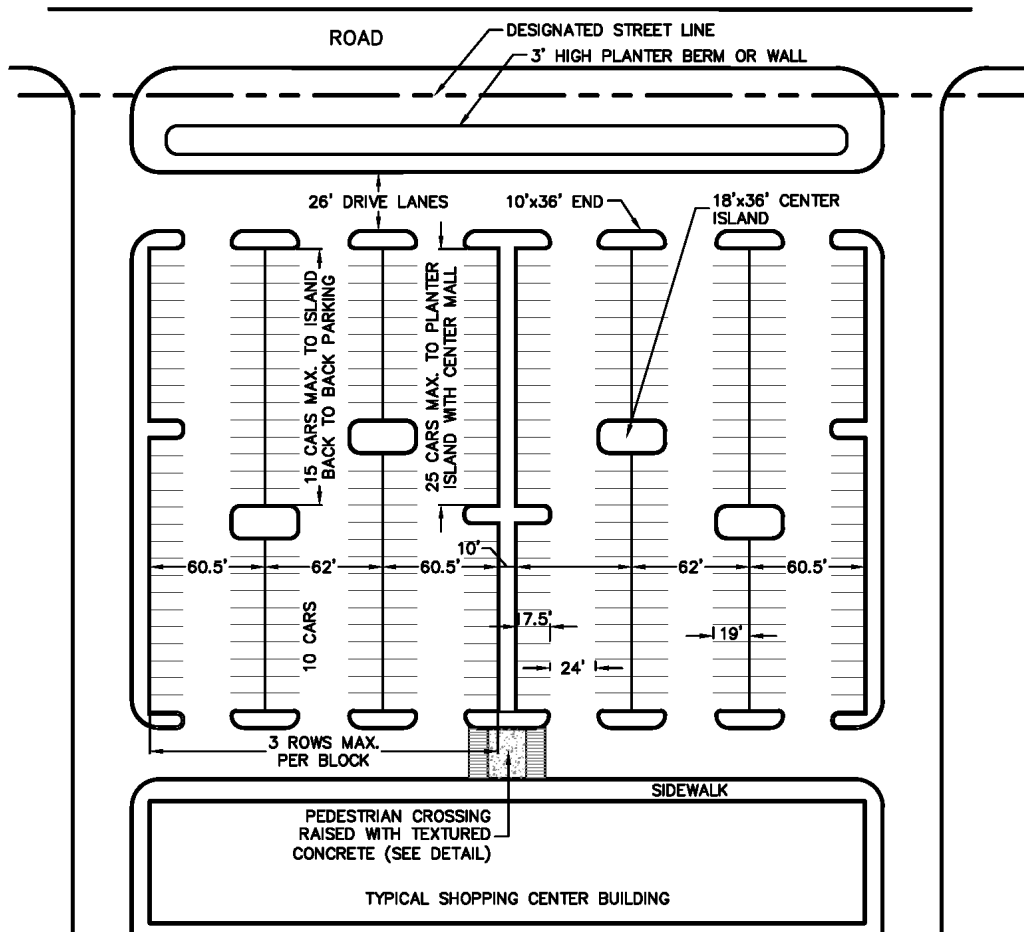
1. ON GRADES UP TO 1% DITCH MAY BE CONSTRUCTED AS SHOWN.
2. FOR GRADES FROM 2% TO A MAXIMUM OF 6% DITCHES MAY BE CONSTRUCTED ONLY IF RIP-RAPPED TO A HEIGHT ONE FOOT ABOVE HIGHEST ANTICIPATED WATER LEVEL.

1. WHERE DITCH CURVES ON RADIUS LESS THAN 100 FT. BOTTOM & OUTSIDE BANK OF DITCH SHALL BE RIP-RAPPED AS SHOWN. RIP-RAP SHALL EXTEND ONE FOOT ABOVE HIGHEST ANTICIPATED WATER LEVEL.

WESLEY HILLS CODE

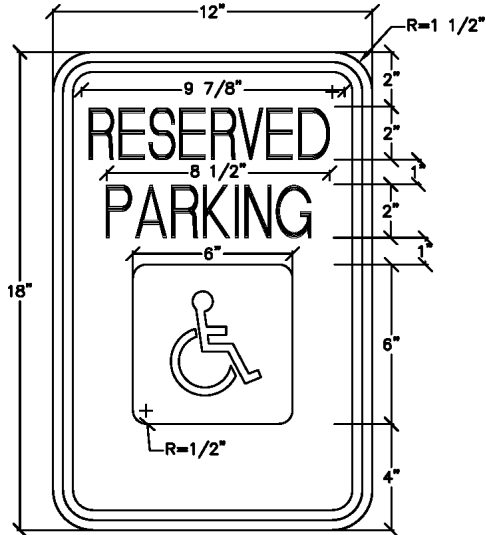


DETAIL - PEDESTRIAN CROSSING



VILLAGE OF WESLEY HILLS
 ROCKLAND COUNTY, N.Y.
 GENERAL PARKING LOT LAYOUT

ZONING

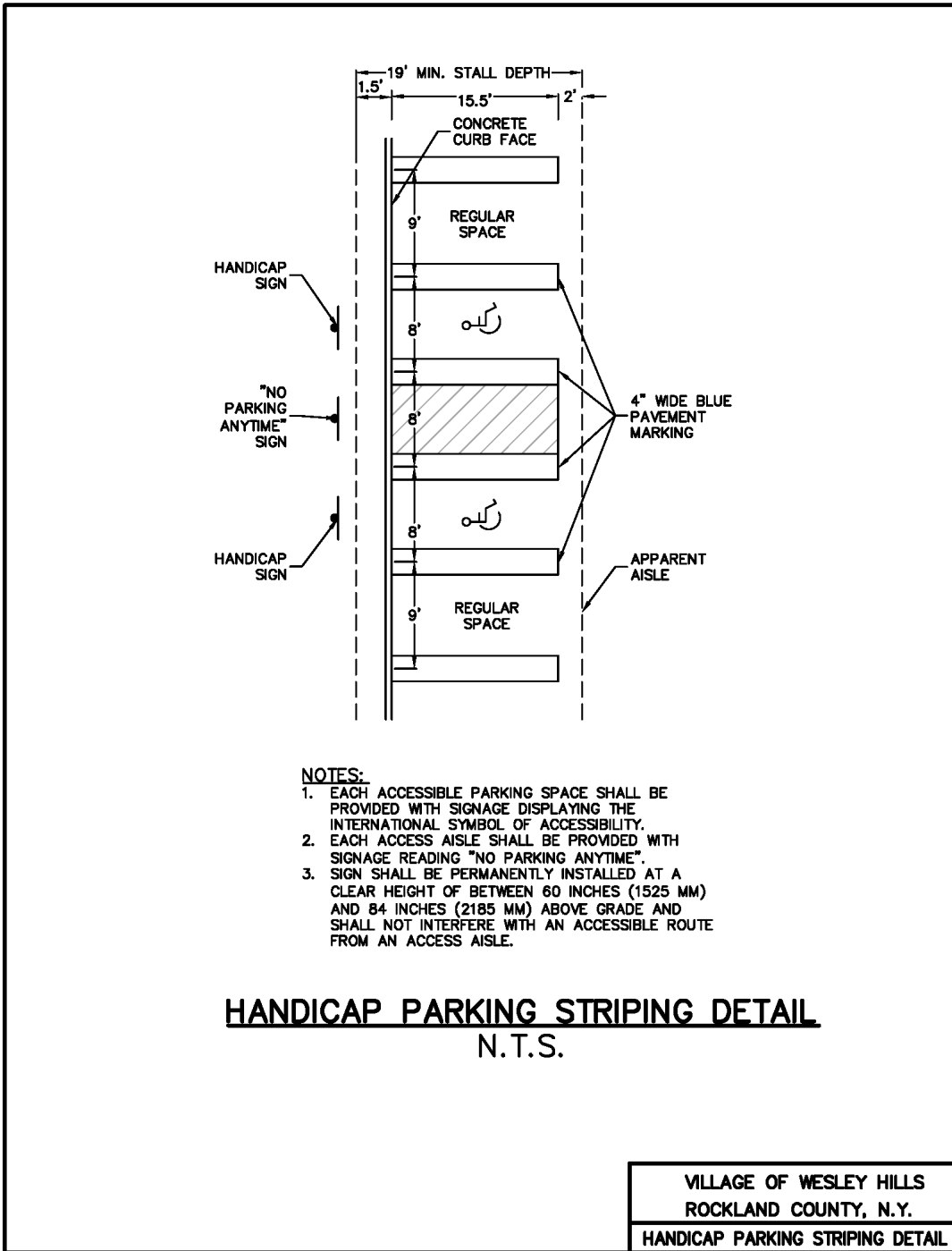


LETTERING AND BORDER - GREEN
WHITE SYMBOL ON BLUE BACKGROUND
BACKGROUND - WHITE

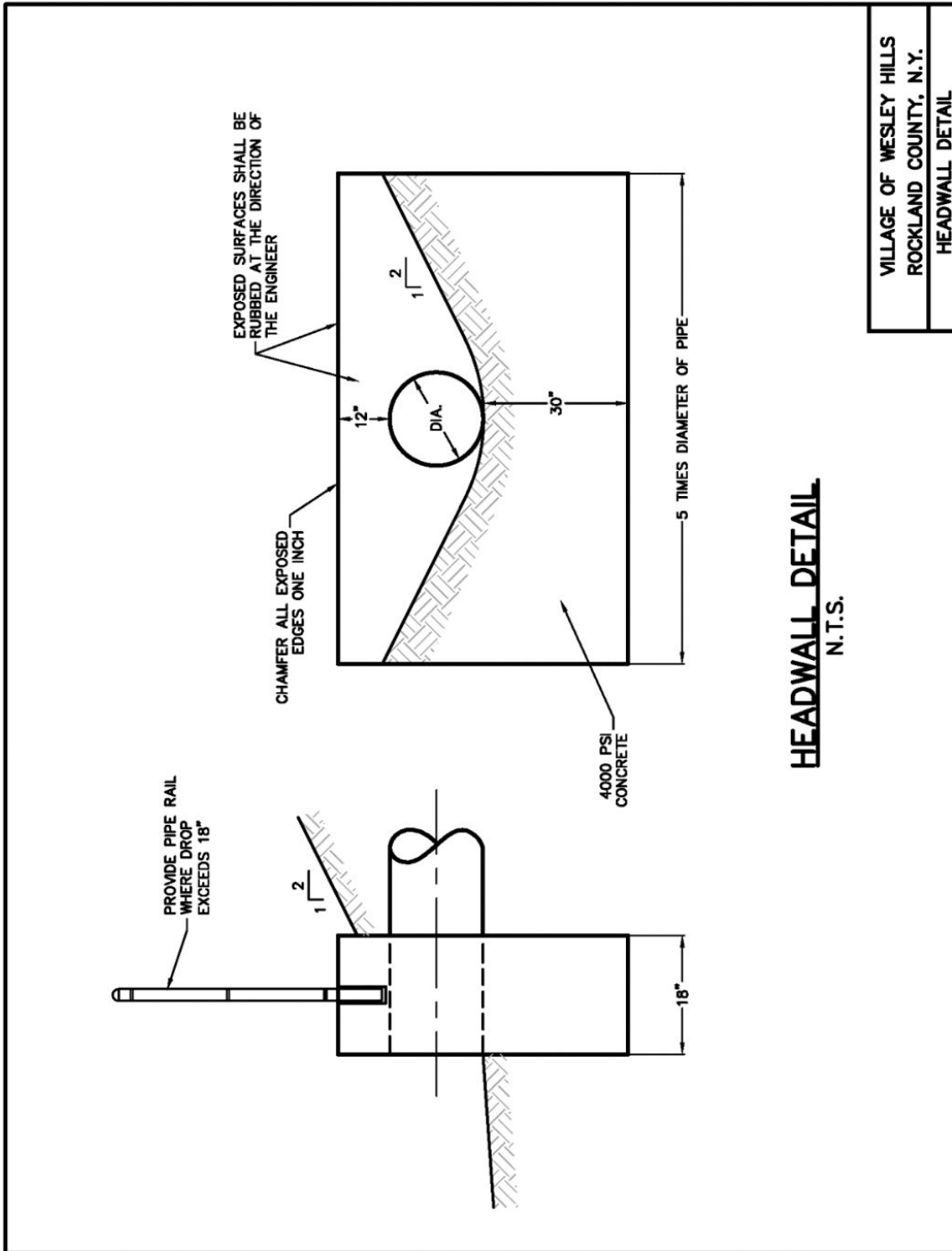
HANDICAP PARKING SIGN
N.T.S.

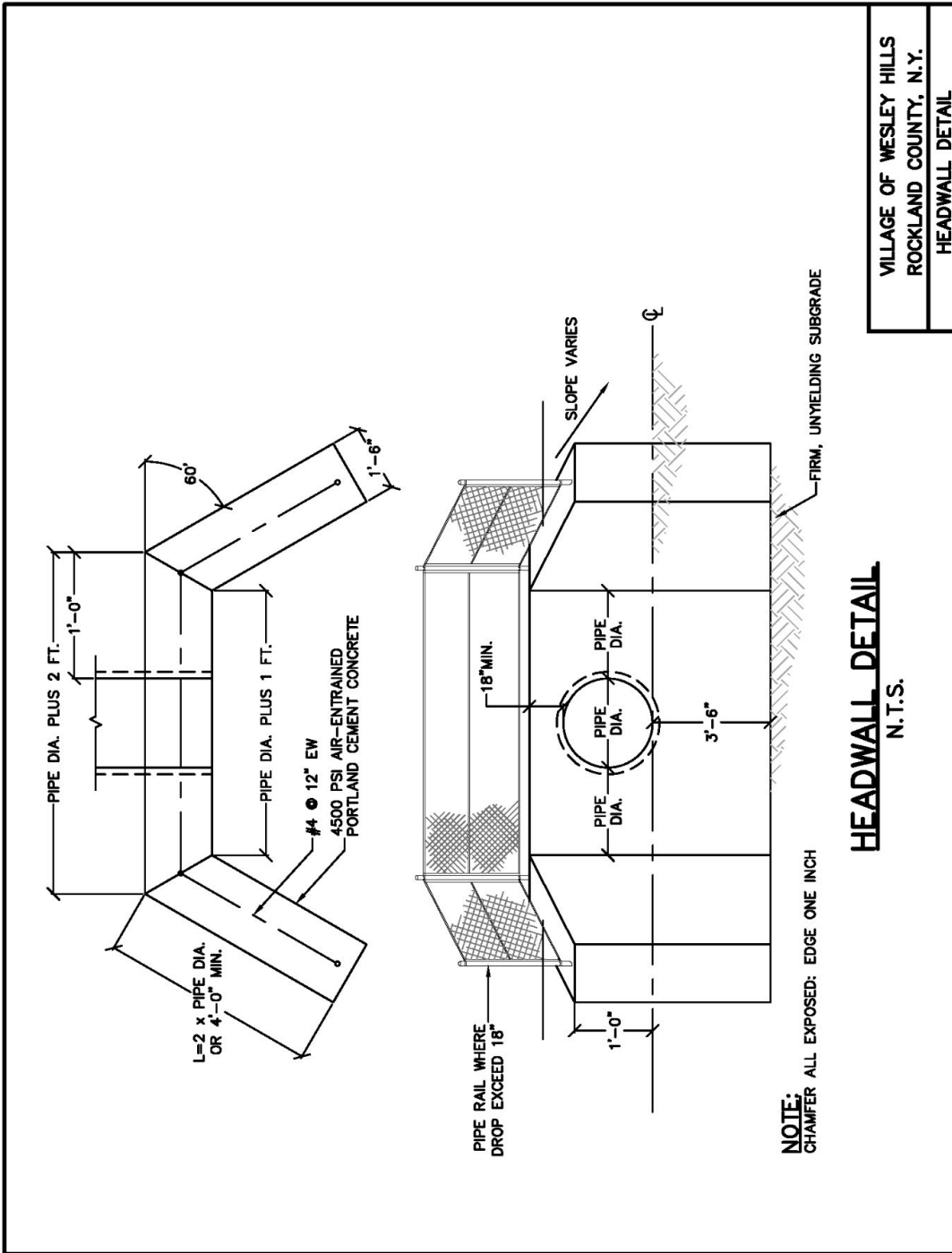
VILLAGE OF WESLEY HILLS
ROCKLAND COUNTY, N.Y.
HANDICAP PARKING SIGN

WESLEY HILLS CODE

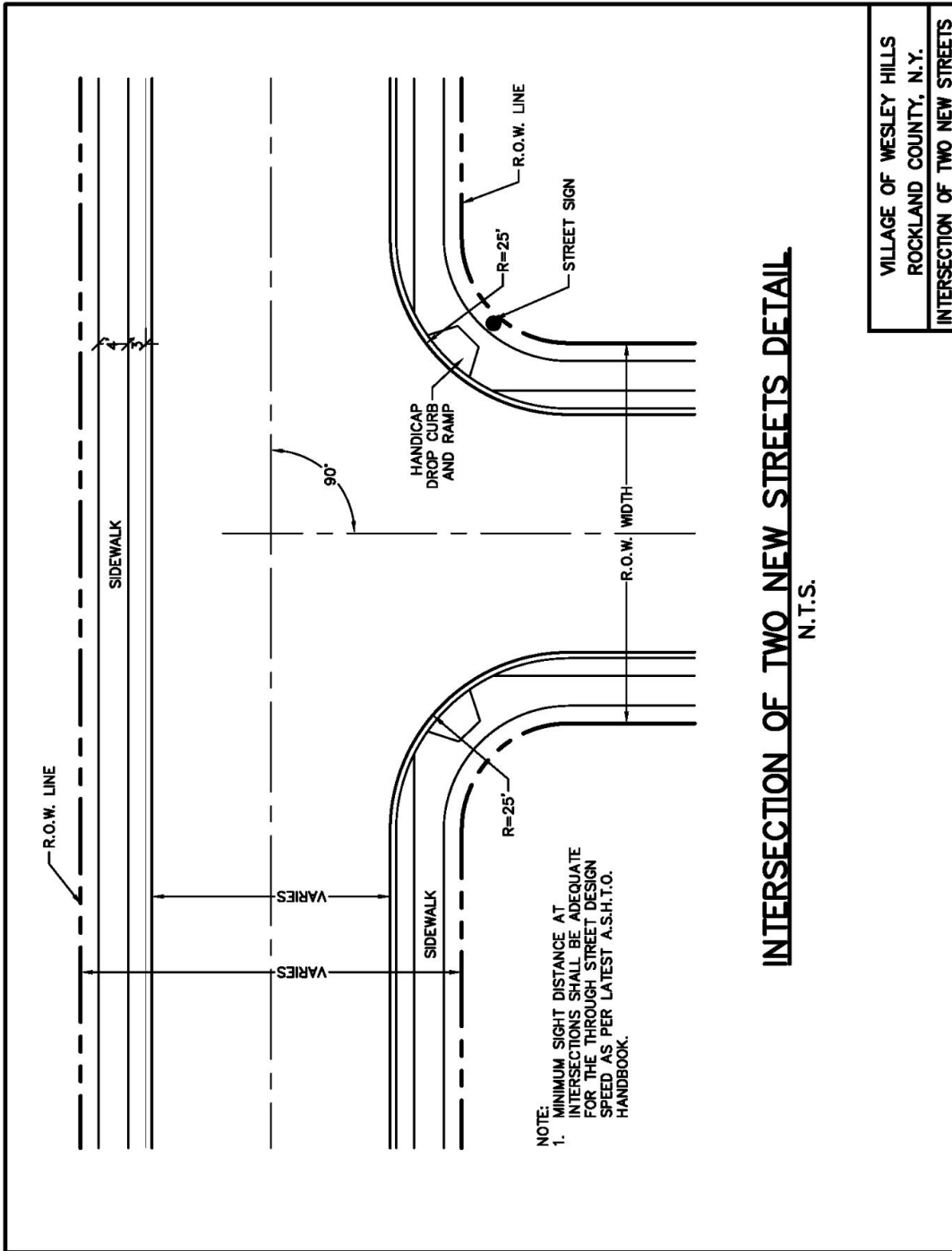


ZONING



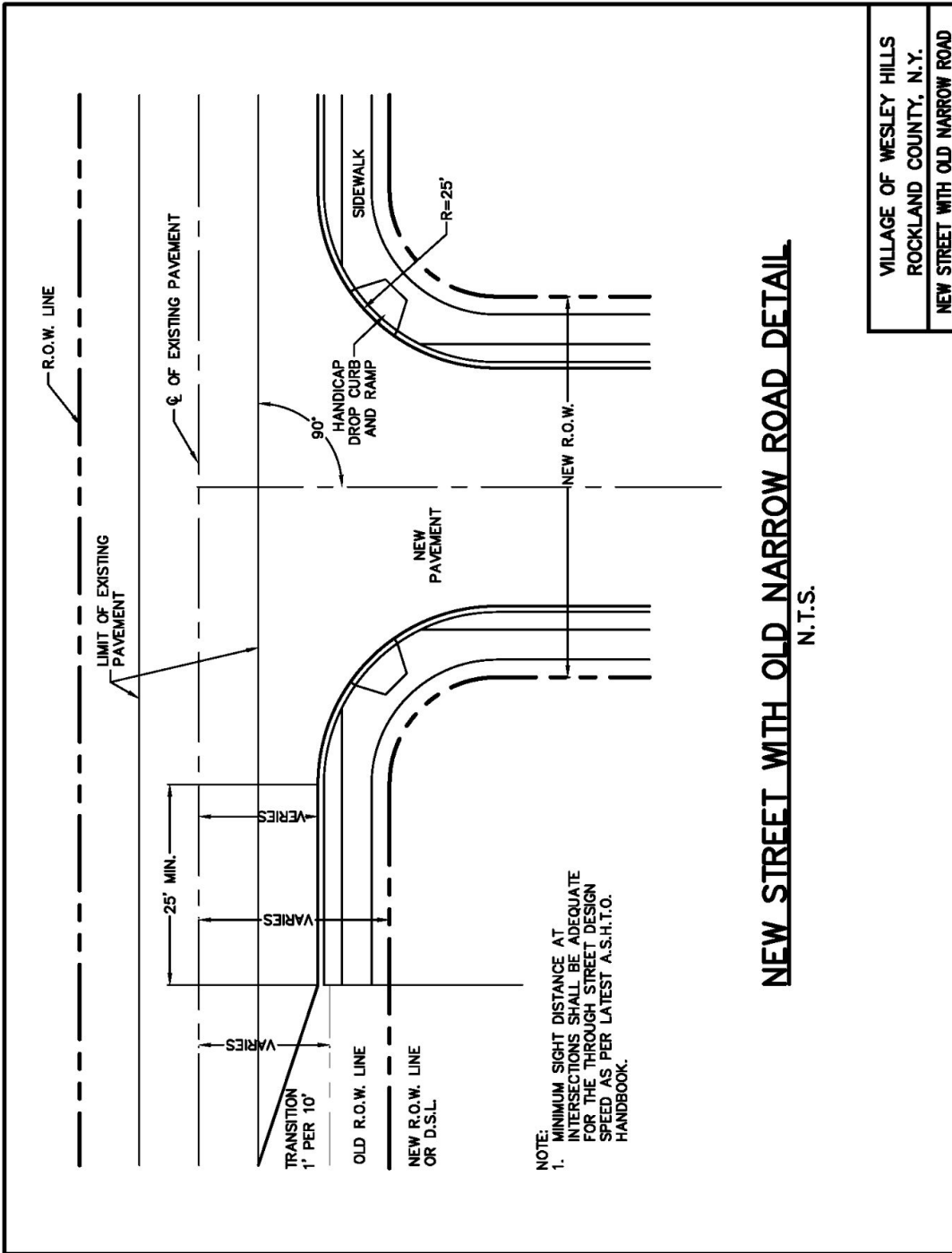


ZONING



INTERSECTION OF TWO NEW STREETS DETAIL
N.T.S.

VILLAGE OF WESLEY HILLS
ROCKLAND COUNTY, N.Y.
INTERSECTION OF TWO NEW STREETS



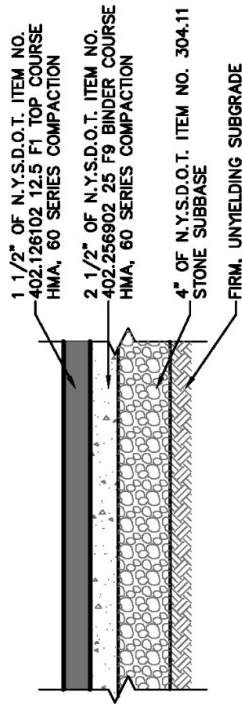
ZONING



LETTERING AND BORDER - RED
BACKGROUND - WHITE

NO PARKING / NO STANDING SIGN
N.T.S.

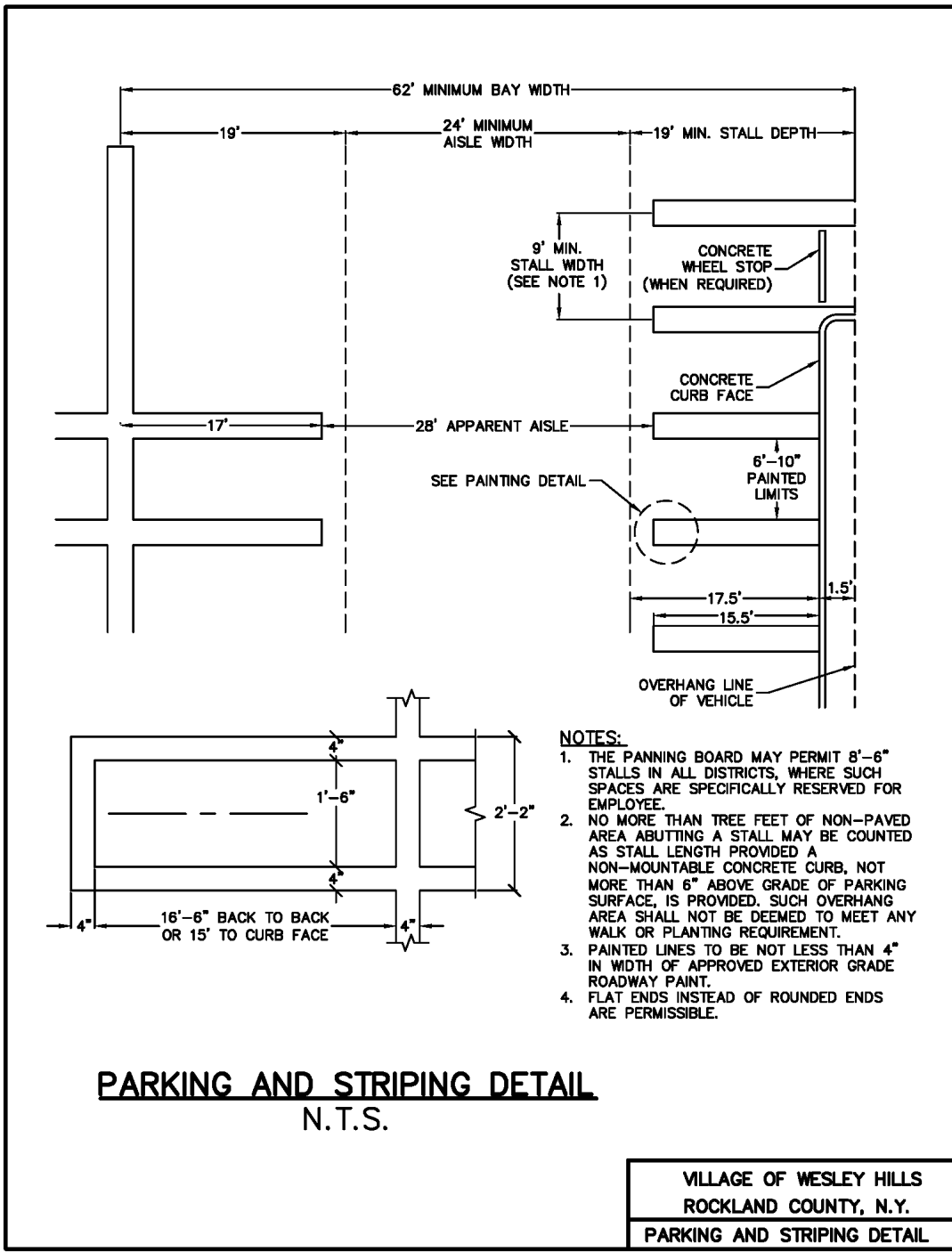
VILLAGE OF WESLEY HILLS
ROCKLAND COUNTY, N.Y.
NO PARKING / NO STANDING SIGN

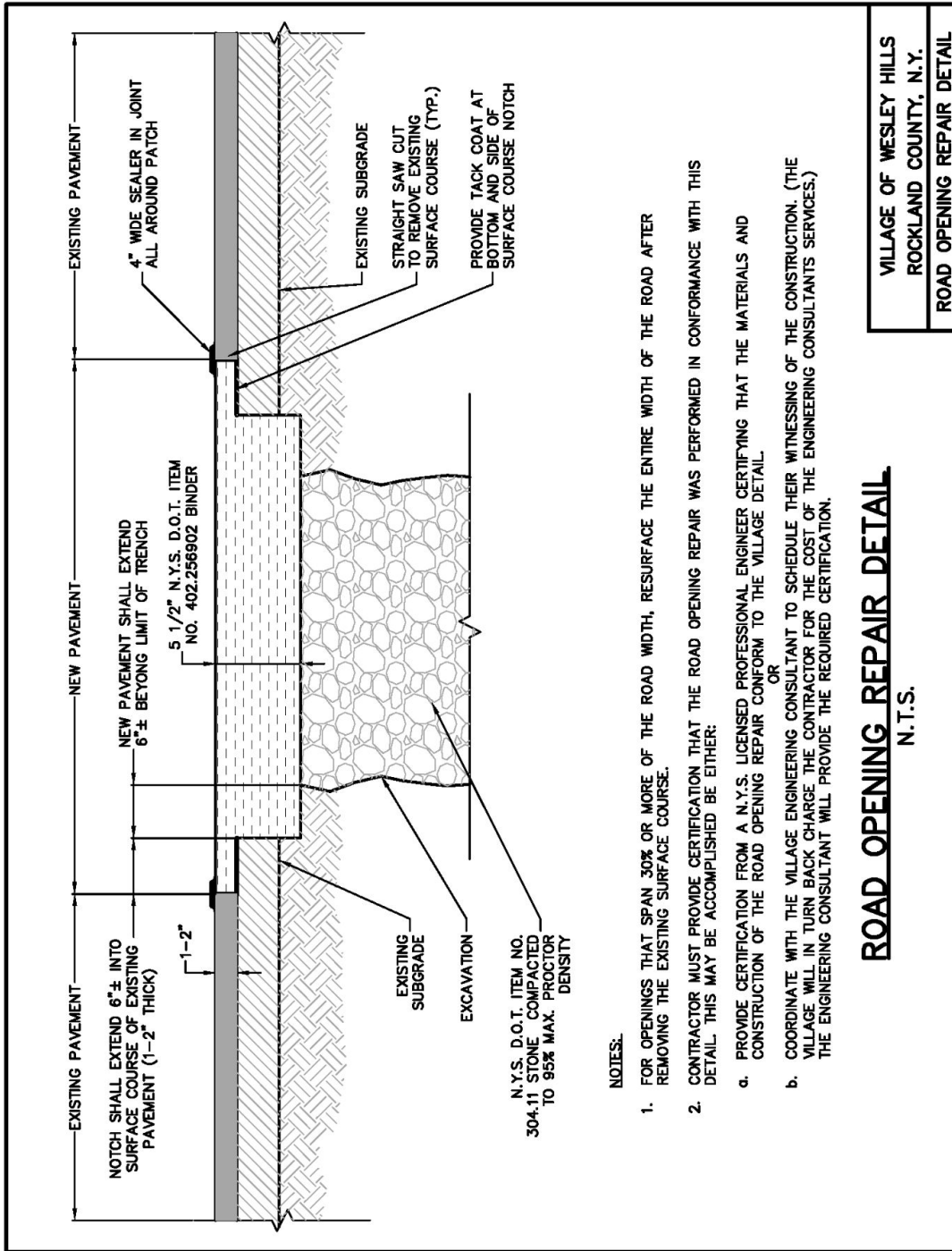


PARKING LOT PAVEMENT SECTION
N.T.S.

VILLAGE OF WESLEY HILLS
ROCKLAND COUNTY, N.Y.
OFF STREET PARKING PAVEMENT SECTION

ZONING





NOTES.

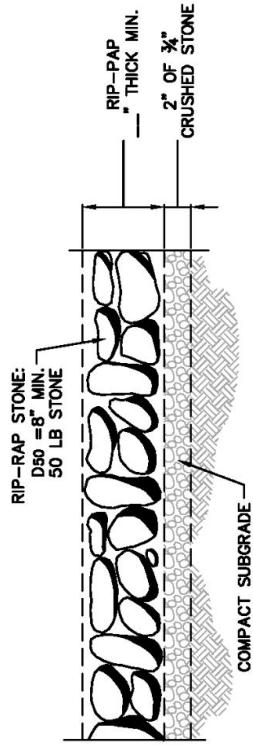
1. FOR OPENINGS THAT SPAN 30% OR MORE OF THE ROAD WIDTH, RESURFACE THE ENTIRE WIDTH OF THE ROAD AFTER REMOVING THE EXISTING SURFACE COURSE.
2. CONTRACTOR MUST PROVIDE CERTIFICATION THAT THE ROAD OPENING REPAIR WAS PERFORMED IN CONFORMANCE WITH THIS DETAIL. THIS MAY BE ACCOMPLISHED BY EITHER:
 - a. PROVIDE CERTIFICATION FROM A N.Y.S. LICENSED PROFESSIONAL ENGINEER CERTIFYING THAT THE MATERIALS AND CONSTRUCTION OF THE ROAD OPENING REPAIR CONFORM TO THE VILLAGE DETAIL.
 - OR
 - b. COORDINATE WITH THE VILLAGE ENGINEERING CONSULTANT TO SCHEDULE THEIR WITNESSING OF THE CONSTRUCTION. (THE VILLAGE WILL IN TURN BACK CHARGE THE CONTRACTOR FOR THE COST OF THE ENGINEERING CONSULTANTS SERVICES.) THE ENGINEERING CONSULTANT WILL PROVIDE THE REQUIRED CERTIFICATION.

ROAD OPENING REPAIR DETAIL

N.T.S.

VILLAGE OF WESLEY HILLS
ROCKLAND COUNTY, N.Y.
ROAD OPENING REPAIR DETAIL

ZONING



RIP-RAP DETAIL
N.T.S.

NOTES:

1. STONE SIZE TO BE DETERMINED BY SHEAR STRESS COMPUTATIONS

VILLAGE OF WESLEY HILLS
ROCKLAND COUNTY, N.Y.
RIP-RAP DETAIL