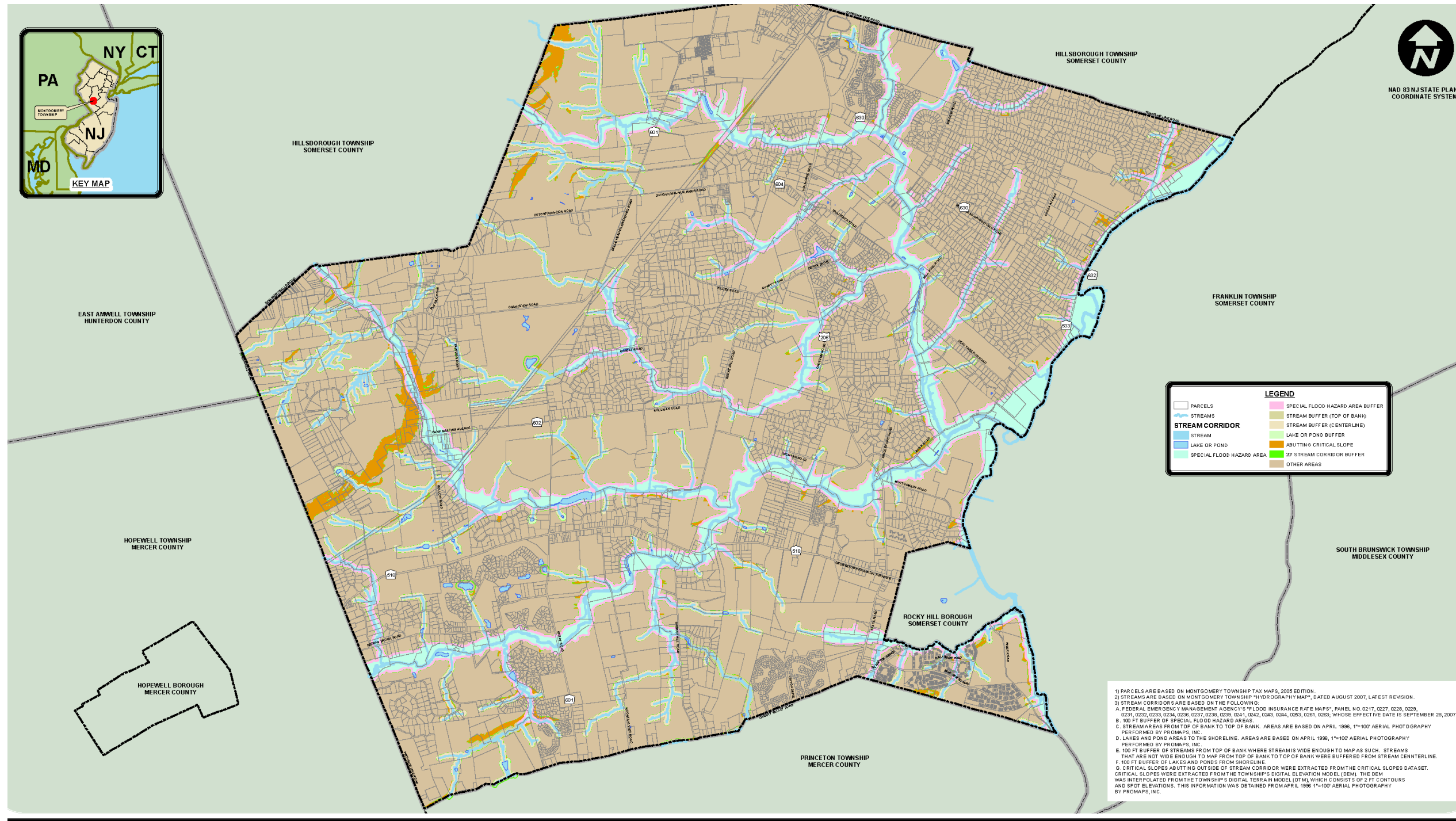


LAND DEVELOPMENT

16 Attachment 5



LEGEND

PARCELS	SPECIAL FLOOD HAZARD AREA BUFFER
STREAMS	STREAM BUFFER (TOP OF BANK)
STREAM CORRIDOR	STREAM BUFFER (CENTERLINE)
STREAM	LAKE OR POND BUFFER
LAKE OR POND	ABUTTING CRITICAL SLOPE
SPECIAL FLOOD HAZARD AREA	20' STREAM CORRIDOR BUFFER
	OTHER AREAS

1) PARCELS ARE BASED ON MONTGOMERY TOWNSHIP TAX MAPS, 2005 EDITION.
 2) STREAMS ARE BASED ON MONTGOMERY TOWNSHIP "HYDROGRAPHY MAP", DATED AUGUST 2007, LATEST REVISION.
 3) STREAM CORRIDORS ARE BASED ON THE FOLLOWING:
 A. FEDERAL EMERGENCY MANAGEMENT AGENCY'S "FLOOD INSURANCE RATE MAPS", PANEL NO. 0217, 0227, 0229, 0239, 0231, 0232, 0233, 0234, 0236, 0237, 0238, 0241, 0242, 0243, 0244, 0253, 0261, 0263, WHOSE EFFECTIVE DATE IS SEPTEMBER 28, 2007.
 B. 100 FT BUFFER OF SPECIAL FLOOD HAZARD AREAS.
 C. STREAM AREAS FROM TOP OF BANK TO TOP OF BANK. AREAS ARE BASED ON APRIL 1996, 1"=100' AERIAL PHOTOGRAPHY PERFORMED BY PROMAPS, INC.
 D. LAKES AND POND AREAS TO THE SHORELINE. AREAS ARE BASED ON APRIL 1996, 1"=100' AERIAL PHOTOGRAPHY PERFORMED BY PROMAPS, INC.
 E. 100 FT BUFFER OF STREAMS FROM TOP OF BANK WHERE STREAMS WERE WIDE ENOUGH TO MAP AS SUCH. STREAMS THAT ARE NOT WIDE ENOUGH TO MAP FROM TOP OF BANK TO TOP OF BANK WERE BUFFERED FROM STREAM CENTERLINE.
 F. 100 FT BUFFER OF LAKES AND PONDS FROM SHORELINE.
 G. CRITICAL SLOPES ABUTTING OUTSIDE OF STREAM CORRIDOR WERE EXTRACTED FROM THE CRITICAL SLOPES DATASET. CRITICAL SLOPES WERE EXTRACTED FROM THE TOWNSHIP'S DIGITAL ELEVATION MODEL (DEM). THE DEM WAS INTERPOLATED FROM THE TOWNSHIP'S DIGITAL TERRAIN MODEL (DTM), WHICH CONSISTS OF 2 FT CONTIGUOUS AND SPOT ELEVATIONS. THIS INFORMATION WAS OBTAINED FROM APRIL 1996 1"=100' AERIAL PHOTOGRAPHY BY PROMAPS, INC.



TOWNSHIP OF MONTGOMERY
 SOMERSET COUNTY, NEW JERSEY
 GEOGRAPHIC INFORMATION SYSTEM

STREAM CORRIDORS
AUGUST 2007

DATE: AUGUST 02, 2007	DRAWN BY: P.A.M.
LAST REVISED: FEBRUARY 04, 2010	CHECKED BY: G.S.

COPYRIGHT: ©2007 TOWNSHIP OF MONTGOMERY, A MUNICIPAL CORPORATION OF THE STATE OF NEW JERSEY.
 MAPS ARE NOT TO BE USED FOR ANY PURPOSE OTHER THAN THAT FOR WHICH THEY WERE DESIGNED BY THE TOWNSHIP OF MONTGOMERY.
 ALL INFORMATION ON THIS MAP IS PROVIDED AS IS WITHOUT WARRANTY. THE TOWNSHIP OF MONTGOMERY ACCEPTS NO LIABILITY FOR DAMAGES OR LIABILITY THAT MAY BE INCURRED FROM THE USE OF THIS MAP.
 THE TOWNSHIP OF MONTGOMERY MAKES NO REPRESENTATION OF ANY KIND INCLUDING, BUT NOT LIMITED TO, THE ACCURACY OR COMPLETENESS OF ANY INFORMATION ON THIS MAP. THE TOWNSHIP OF MONTGOMERY ACCEPTS NO LIABILITY FOR DAMAGES OR LIABILITY THAT MAY BE INCURRED FROM THE USE OF THIS MAP.
 THE TOWNSHIP OF MONTGOMERY MAKES NO REPRESENTATION OF ANY KIND INCLUDING, BUT NOT LIMITED TO, THE ACCURACY OR COMPLETENESS OF ANY INFORMATION ON THIS MAP. THE TOWNSHIP OF MONTGOMERY ACCEPTS NO LIABILITY FOR DAMAGES OR LIABILITY THAT MAY BE INCURRED FROM THE USE OF THIS MAP.