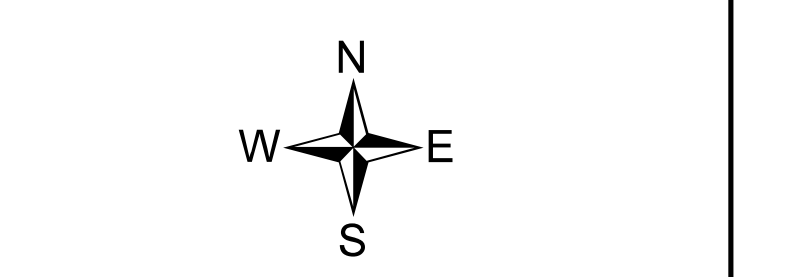


OFFICIAL ZONING MAP
OF
**COOLBAUGH
TOWNSHIP**
MONROE COUNTY, PENNSYLVANIA

- LEGEND**
- Official Zoning Districts**
- C-1 - Convenience Commercial
 - C-2 - Office Park
 - C-3 - Commercial Village
 - I - Industrial
 - I-A - Industrial Airport
 - R-1 - Rural Residential
 - R-2 - Low Density Residential
 - R-3 - Medium Density Residential
 - SP - State Preservation
 - W-C - Woodland Conservation
- Airport Hazard Line
 Airport Runway
 Electric Transmission Line
 Natural Gas Pipeline
 Active Railroad
 Abandoned Rail ROW
 Road Centerlines
 Lakes & Ponds
 Streams
 Municipal Boundaries
 County Boundaries

0 1,000 2,000 4,000
Feet

1:18,000

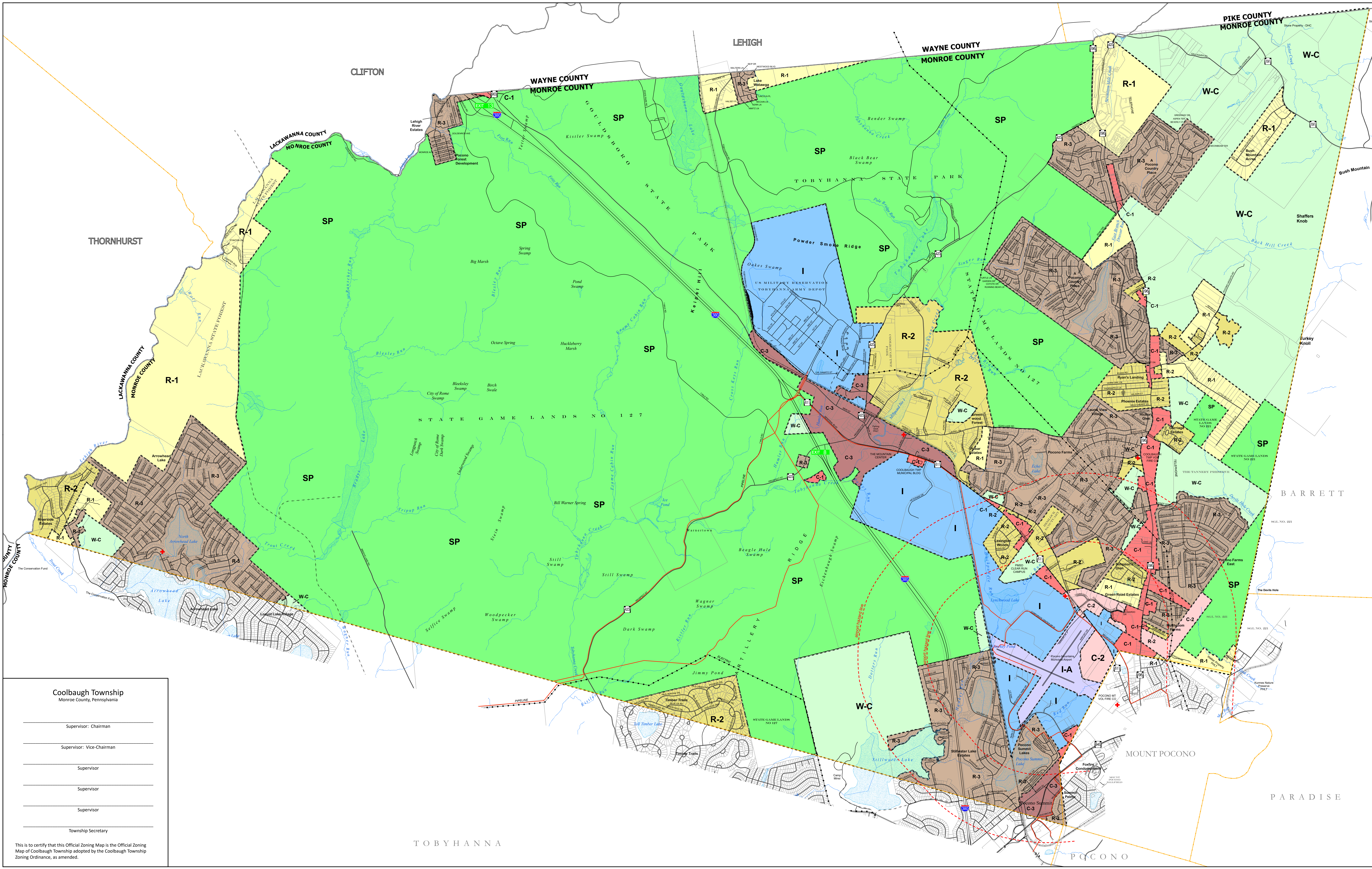


The County of Monroe makes no express or implied warranties concerning the release of this information. The County of Monroe is unaware of the use or uses to be made of this data. Consequently, the County of Monroe does not warrant this data as fit for any particular purpose.



PREPARED BY:
**Monroe County
Planning Commission**
701 Main Street, Suite 405
Stroudsburg, PA 18350
(570) 517-3100
mcp@monroecountypa.gov

July 2023



Coolbaugh Township
Monroe County, Pennsylvania

Supervisor: Chairman _____

Supervisor: Vice-Chairman _____

Supervisor _____

Supervisor _____

Supervisor _____

Township Secretary _____

This is to certify that this Official Zoning Map is the Official Zoning Map of Coolbaugh Township adopted by the Coolbaugh Township Zoning Ordinance, as amended.

TOBYHANNA

MOUNT POCONO

PARADISE