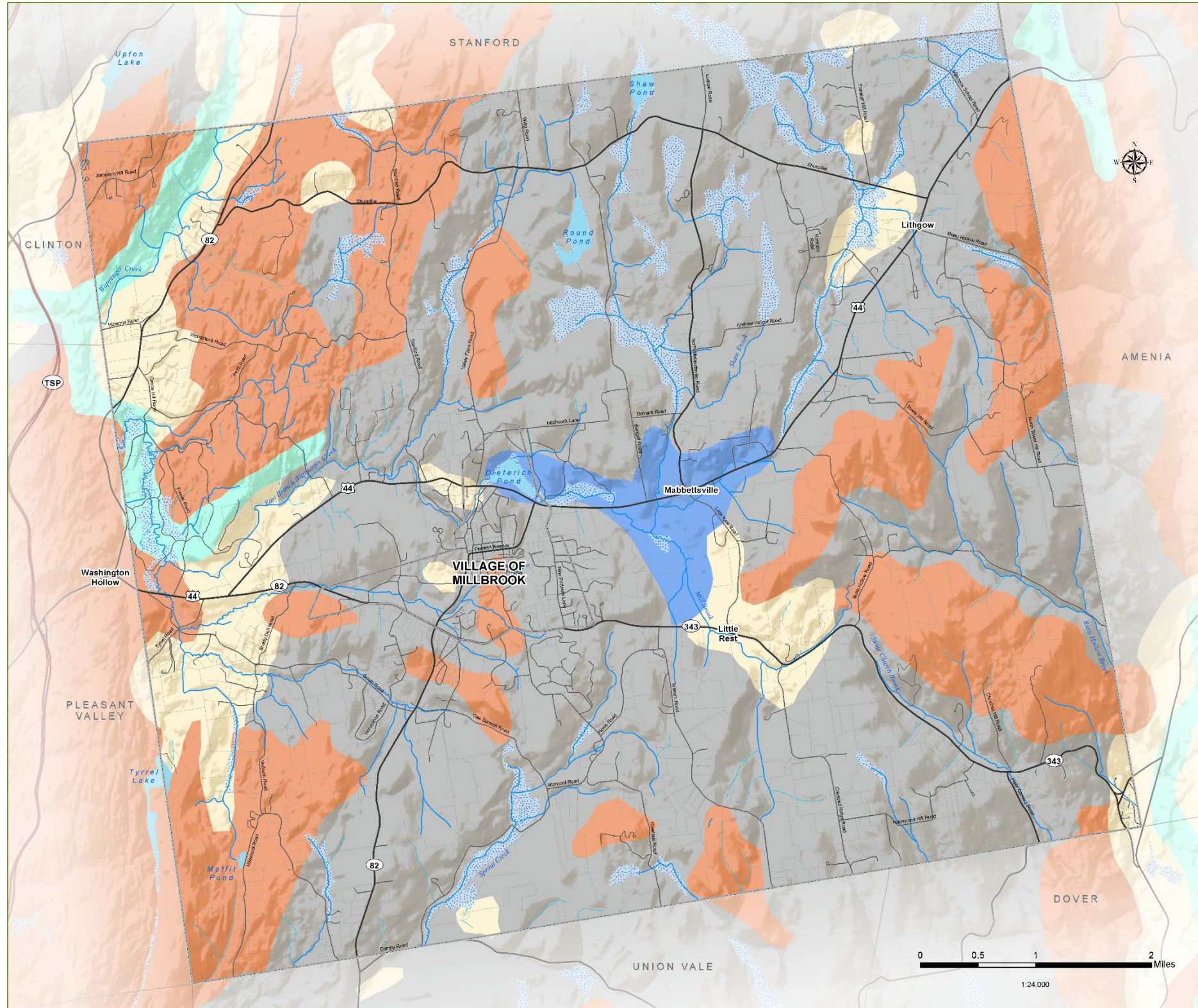


ZONING

165 Attachment 10



Town of Washington

Dutchess County, NY

Natural Resources Inventory - 2023

6. Surficial Geology

- Washington Boundary
- Municipal Boundary
- Parcel Boundary
- Taconic State Parkway
- Major Road
- Local Road
- Waterbody
- Perennial Stream
- Intermittent Stream
- Wetland

Surficial Material

- Thin glacial till over bedrock
- Thick glacial till over bedrock
- Glacial Outwash (water laid sand, gravel, and silt or clay)
- Recent Alluvium
- Lake Sediments

Glacial till is a mixture of materials deposited directly by the glaciers, ranging in size from microscopic silt to boulders. Glacial outwash is sand and gravel. It is the most productive groundwater source in the county and are vulnerable to contamination from the land surface. Alluvial deposits are those deposited by rivers and are found in floodplains.

DATA SOURCES

Municipal Boundaries: Dutchess County Real Property, 2022
 Parcel Boundaries: Dutchess County Real Property, 2022
 Roads: Dutchess County OCIS, 2019
 Streams & Waterbodies: Hudsonia, Ltd. 2004
 Wetlands: NYSDEC Regulatory Freshwater Wetlands, 2002
 Geology: New York State Museum 1970

Prepared by: CCEDC GIS Lab, 2023

WARNING: This map is not a substitute for land surveys or legal documents. No accuracy or completeness guarantee is implied or intended.

The Dutchess County Natural Resources Inventory (NRI) Technical Assistance Project is a partnership among the Town of Clinton, the Town of Washington, the Village of Millbrook, Cornell Cooperative Extension of Dutchess County, and Cornell University Department of Natural Resources, with funding from the Environmental Protection Fund through the New York State Department of Environmental Conservation Hudson River Estuary Program.

