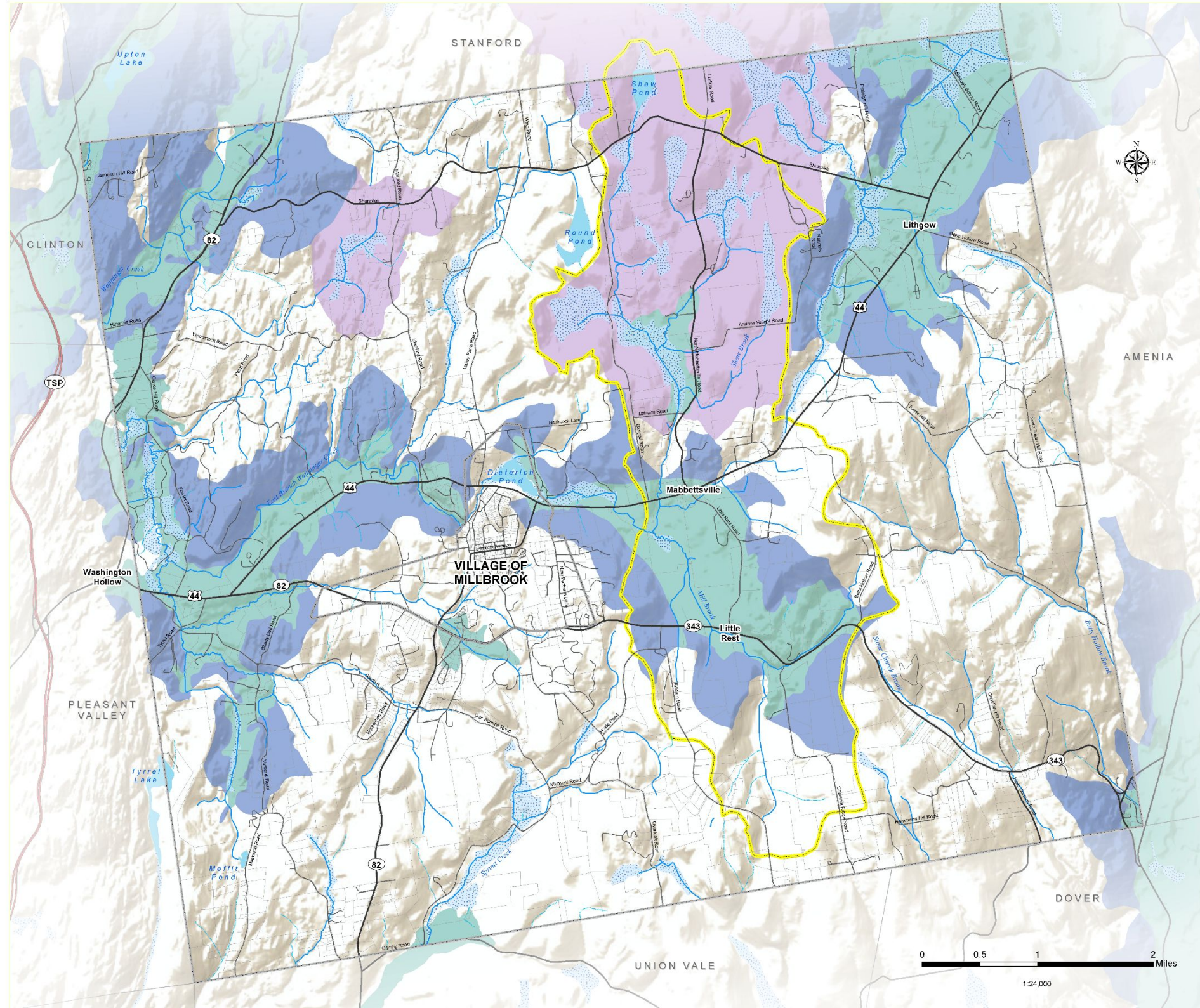


ZONING

165 Attachment 12



Town of Washington

Dutchess County, NY

Natural Resources Inventory - 2023

8. Drinking Water Resources

- Washington Boundary
- Municipal Boundary
- Parcel Boundary
- Taconic State Parkway
- Major Road
- Local Road
- Waterbody
- Perennial Stream
- Intermittent Stream
- Wetland

- Aquifer Recharge Areas**
- 1- Primary Recharge— permeable deposits, directly overlying aquifer
 - 2- Secondary Recharge— less permeable deposits, up gradient from aquifer, contributes to recharge through infiltration and groundwater flow
 - 3- Tertiary Recharge - contributing area around streams that will subsequently seep into aquifer through infiltration

- Village of Millbrook Drinking Water Source Watershed

In order of sensitivity, Zones 1-3 demonstrate Aquifer Recharge Zones that are important to protect by preventing pollution for continued access to clean water. Boundaries are directly related to the natural geographic distribution of geologic materials which yield water.

Delineation of the Source Watershed for Millbrook Village's Public Water Supply was prepared by the NYS DOH's Source Water Assessment Program (SWAP) for Millbrook's Public Water Supply NY1302770. Assessment area borders are created using topography (high points and ridgelines) to define the land area that drains water to each drinking water source.

DATA SOURCES

Municipal Boundaries: Dutchess County Real Property, 2022
 Parcel Boundaries: Dutchess County Real Property, 2022
 Roads: Dutchess County OCIS, 2019
 Streams & Waterbodies: Hudsonia, Ltd. 2004
 Wetlands: NYSDEC Regulatory Freshwater Wetlands, 2002
 Aquifer Recharge Areas: Water Supply Protection Program for Dutchess County, 1992
 Drinking Water Source Watershed: NYSDOH, 2004

Prepared by: CCEDC GIS Lab, 2023

WARNING: This map is not a substitute for land surveys or legal documents. No accuracy or completeness guarantee is implied or intended.

The Dutchess County Natural Resources Inventory (NRI) Technical Assistance Project is a partnership among the Town of Clinton, the Town of Washington, the Village of Millbrook, Cornell Cooperative Extension of Dutchess County, and Cornell University Department of Natural Resources, with funding from the Environmental Protection Fund through the New York State Department of Environmental Conservation Hudson River Estuary Program.

