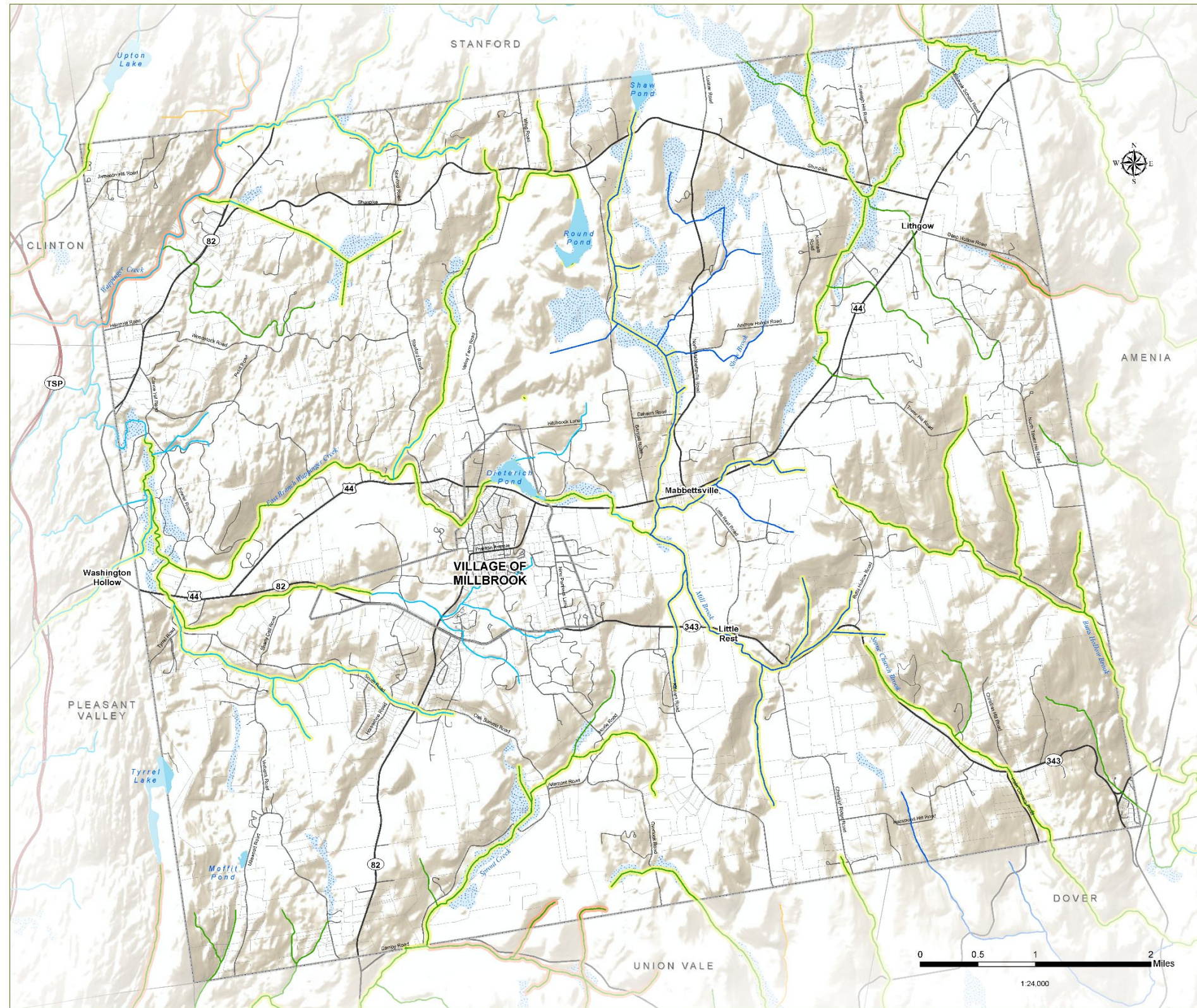


ZONING

165 Attachment 14



Town of Washington

Dutchess County, NY

Natural Resources Inventory - 2023

10. Water Quality Classifications

- Washington Boundary
- Municipal Boundary
- Parcel Boundary
- Taconic State Parkway
- Major Road
- Local Road
- Waterbody
- Perennial Stream
- Intermittent Stream
- Wetland

Stream Classification

- A - water supply, primary and secondary contact recreation and fishing
- B - primary and secondary contact recreation and fishing
- C - fishing, suitable for fish propagation and survival
- D - fishing
- Trout Waters
- Trout Spawning Waters

The New York State Protection of Waters regulations are a set of rules and guidelines designed to protect the quality of surface water in the state of New York. The designated "best use" of each waterbody is the basis of its Water Quality Standard. Some waterbodies' classes may have an associated standard indicating either Trout waters (T) or Trout Spawning Waters (TS) in which some water quality standards, guidance values or temperature criteria apply specifically to this designation.

DATA SOURCES

Municipal Boundaries: Dutchess County Real Property, 2022
 Parcel Boundaries: Dutchess County Real Property, 2022
 Roads: Dutchess County OCIS, 2019
 Streams & Waterbodies: Hudsonia, Ltd. 2004
 Wetlands: NYSDEC Regulatory Freshwater Wetlands, 2002
 Water Quality Classification: NYSDEC 2010

Prepared by: CCEDC GIS Lab, 2023

WARNING: This map is not a substitute for land surveys or legal documents. No accuracy or completeness guarantee is implied or intended.

The Dutchess County Natural Resources Inventory (NRI) Technical Assistance Project is a partnership among the Town of Clinton, the Town of Washington, the Village of Millbrook, Cornell Cooperative Extension of Dutchess County, and Cornell University Department of Natural Resources, with funding from the Environmental Protection Fund through the New York State Department of Environmental Conservation Hudson River Estuary Program.

