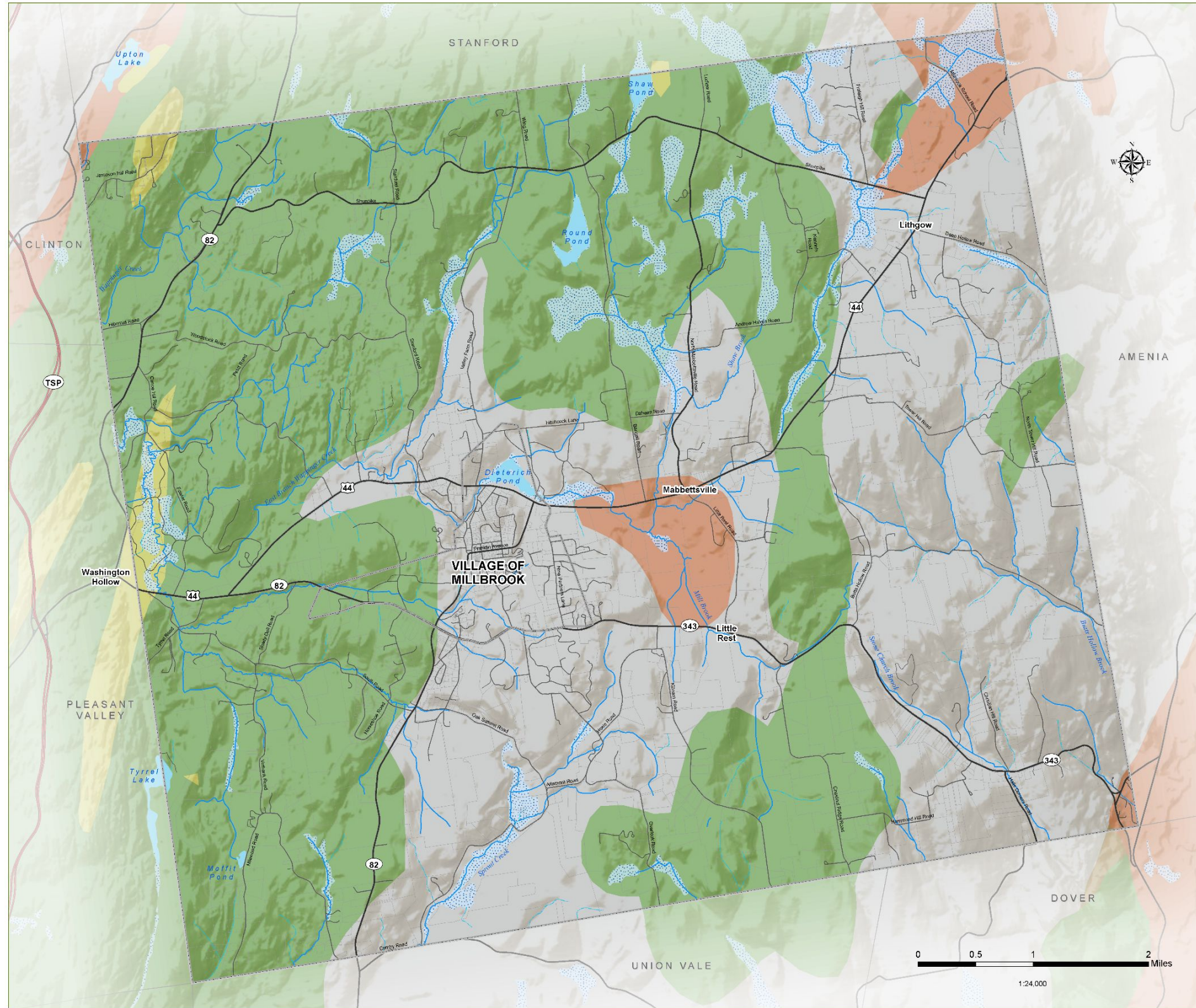


ZONING

165 Attachment 9



Town of Washington

Dutchess County, NY

Natural Resources Inventory - 2023

5. Bedrock Geology

- Washington Boundary
- Municipal Boundary
- Parcel Boundary
- Taconic State Parkway
- Major Road
- Local Road
- Waterbody
- Perennial Stream
- Intermittent Stream
- Wetland

Bedrock Formation

- Oag Austin Glen Formation
(Sedimentary: shale, graywacke)
- Osh Autochthonous Shale
(Sedimentary)
- OeW Autochthonous Limestone
(Sedimentary: carbonate/calcareous)
- Et Taconic Sequence
(Sedimentary/Metamorphic: slate, graywacke, quartzite, and limestone)

Bedrock is the solid rock that lies beneath the soil and subsoil. Topography, ecological communities, development patterns, and mineral resources are all influenced by underlying bedrock geology. Geology also affects the quality and quantity of groundwater, migration of pollutants, drainage patterns, and soil characteristics. Carbonate bedrock areas are by far the most productive sources of groundwater, while areas underlain by schist, graywacke, and shales have limited groundwater yields.

DATA SOURCES

Municipal Boundaries: Dutchess County Real Property, 2022
 Parcel Boundaries: Dutchess County Real Property, 2022
 Roads: Dutchess County OCIS, 2019
 Streams & Waterbodies: Hudsonia, Ltd. 2004
 Wetlands: NYSDEC Regulatory Freshwater Wetlands, 2002
 Geology: New York State Museum 1970

Prepared by: CCEDC GIS Lab, 2023

WARNING: This map is not a substitute for land surveys or legal documents. No accuracy or completeness guarantee is implied or intended.

The Dutchess County Natural Resources Inventory (NRI) Technical Assistance Project is a partnership among the Town of Clinton, the Town of Washington, the Village of Millbrook, Cornell Cooperative Extension of Dutchess County, and Cornell University Department of Natural Resources, with funding from the Environmental Protection Fund through the New York State Department of Environmental Conservation Hudson River Estuary Program.

