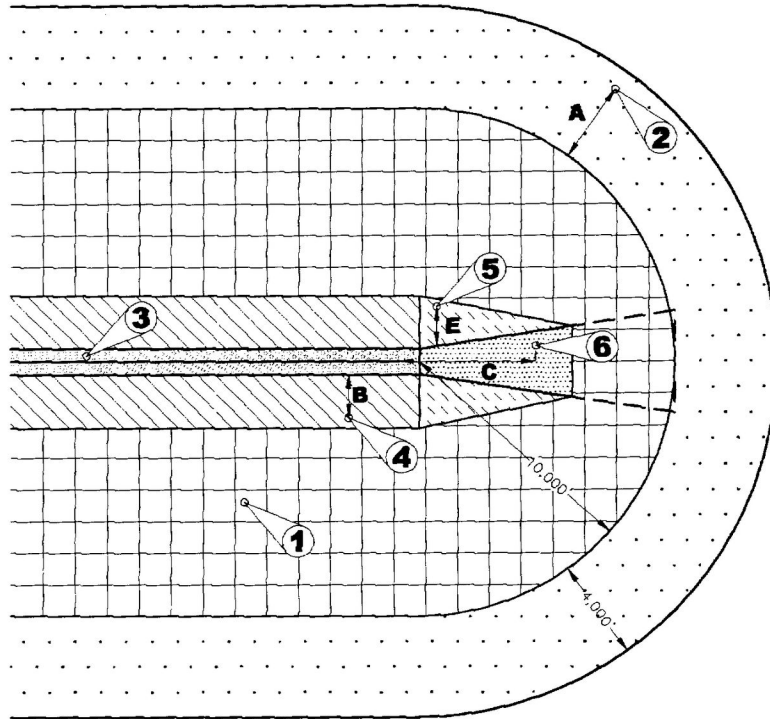



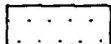

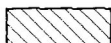
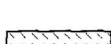
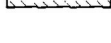
# ZONING

## 155 Attachment 10

### Nonprecision Other Than Utility Runway Zones [Added 3-10-2003 by Ord. No. 438]



### ALLOWABLE HEIGHT FORMULAS

LOCATION ZONE	FORMULA
1  Horizontal Surface	Allowable Height = (Established Airport Elevation) + (150') - (Ground Elevation)
2  Conical Surface	Allowable Height = (Established Airport Elevation) + (150') + (A + 20) - (Ground Elevation)
3  Primary Surface	Allowable Height = (Elevation of the Runway Perpendicular to the Location Point) - (Ground Elevation)
4  Transitional Surface	Allowable Height = (Elevation of the Primary Surface along the Runway Centerline Perpendicular to the Location Point) + (B + 7) - (Ground Elevation)
5  Transitional Surface	Allowable Height = (Elevation of the Approach Surface along the Runway Centerline Perpendicular To the Location Point) + (E + 7) - (Ground Elevation)
6  Approach Surface	Allowable Height = (Runway End Elevation) + ((C-200) * + 34) - (Ground Elevation)

\*For Turf Runways do not subtract 200 from C