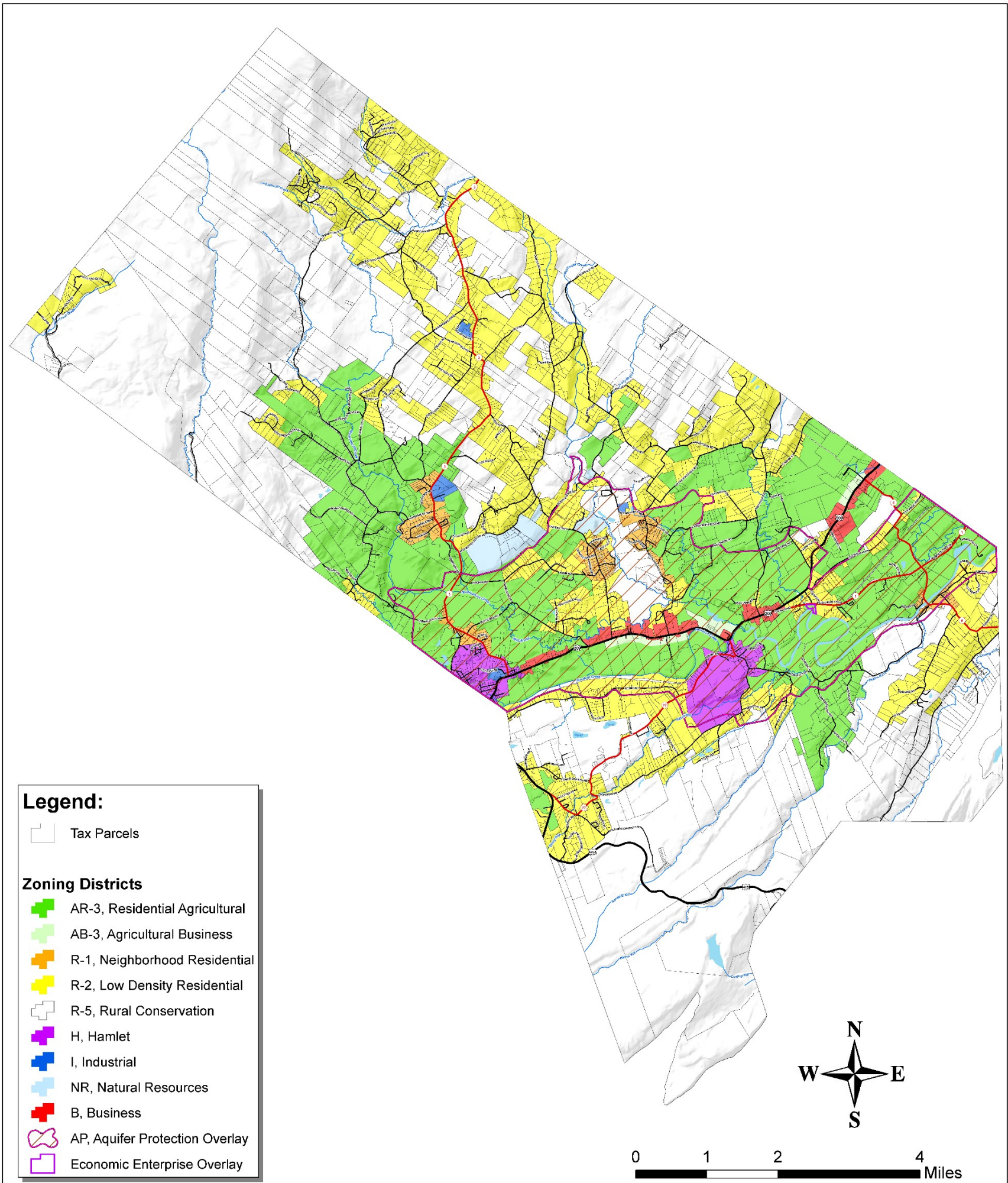


ZONING

140 Attachment 2

Zoning Map

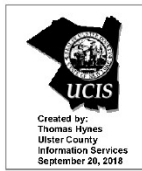


Legend:

- Tax Parcels

Zoning Districts

- AR-3, Residential Agricultural
- AB-3, Agricultural Business
- R-1, Neighborhood Residential
- R-2, Low Density Residential
- R-5, Rural Conservation
- H, Hamlet
- I, Industrial
- NR, Natural Resources
- B, Business
- AP, Aquifer Protection Overlay
- Economic Enterprise Overlay



Zoning Districts are based upon the zoning map of the Town of Rochester, New York, as amended by the Board of Zoning Appeals, and the Zoning Ordinance, Chapter 140 of the Town Code, as amended. The Zoning Ordinance was adopted on September 24, 2006, by local law #1 of 2006, Chapter 140 Zoning, Amended May 7, 2015 by local law #2 of 2015, and 2, 2018 by Local Law #1 of 2018.

Parcels: Ulster County Real Property Tax Service (Current to 2020/8)

Water Bodies and Streams: Aerial and LiDAR Hydrography as part of the Automated, on-line Watershed System (A-8) project contract: 37-2008. Obtained from the New York State Office of General Services, NY State Office of General Services, 2018.

The Aquifer Protection Overlay Districts are based upon the Aquifer Protection Overlay District map prepared by Robert Wilkey of the NY Rural Water Association (8/22/05).

Economic Enterprise Overlay Districts are based upon the Economic Enterprise Overlay District map prepared by Robert Wilkey of the NY Rural Water Association (8/22/05).

Map prepared by the Town of Rochester, October 4, 2019.

Town of Rochester Zoning 2019