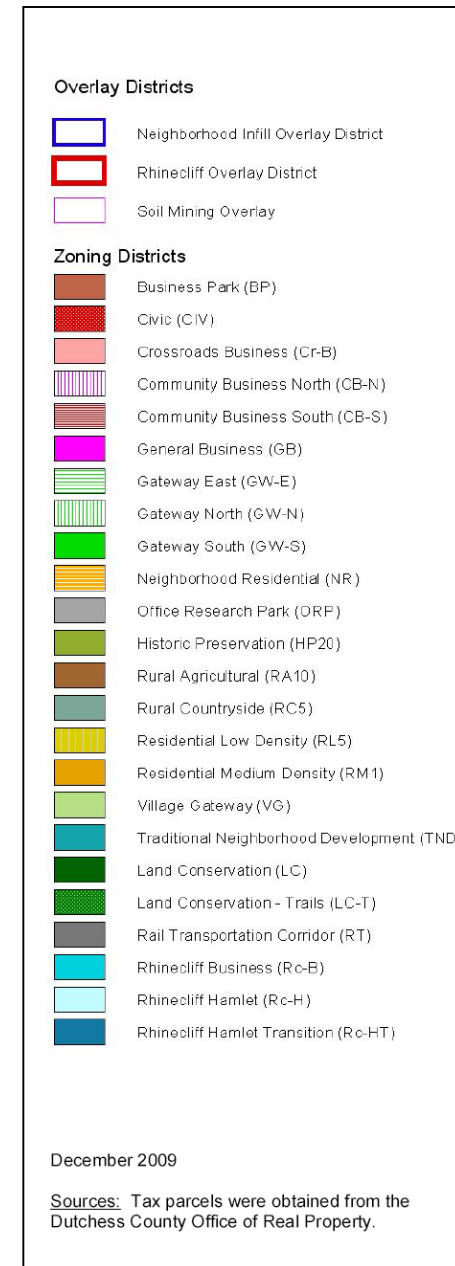
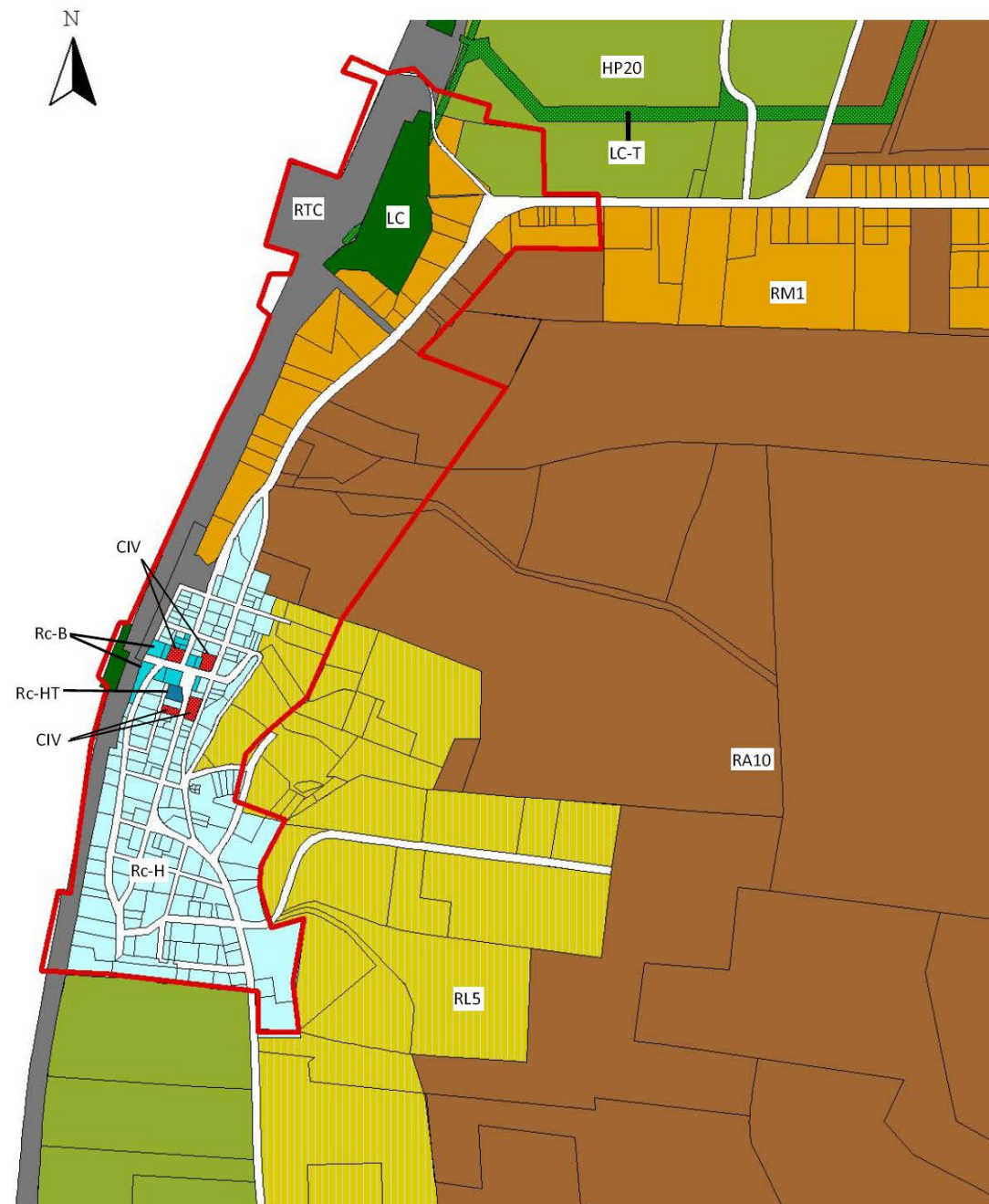


ZONING

125 Attachment 1

Town of Rhinebeck

Proposed Zoning Districts Map — Hamlet of Rhinecliff Detail



The LC-T line representing the former Hucklebush Railway (originally known as the Rhinebeck C&T Railroad) right-of-way is an approximate location only. Final determination of the location of the trail will be made on a project-by-project basis during Planning Board review.

Town of Rhinebeck, NY — Zoning Districts Map



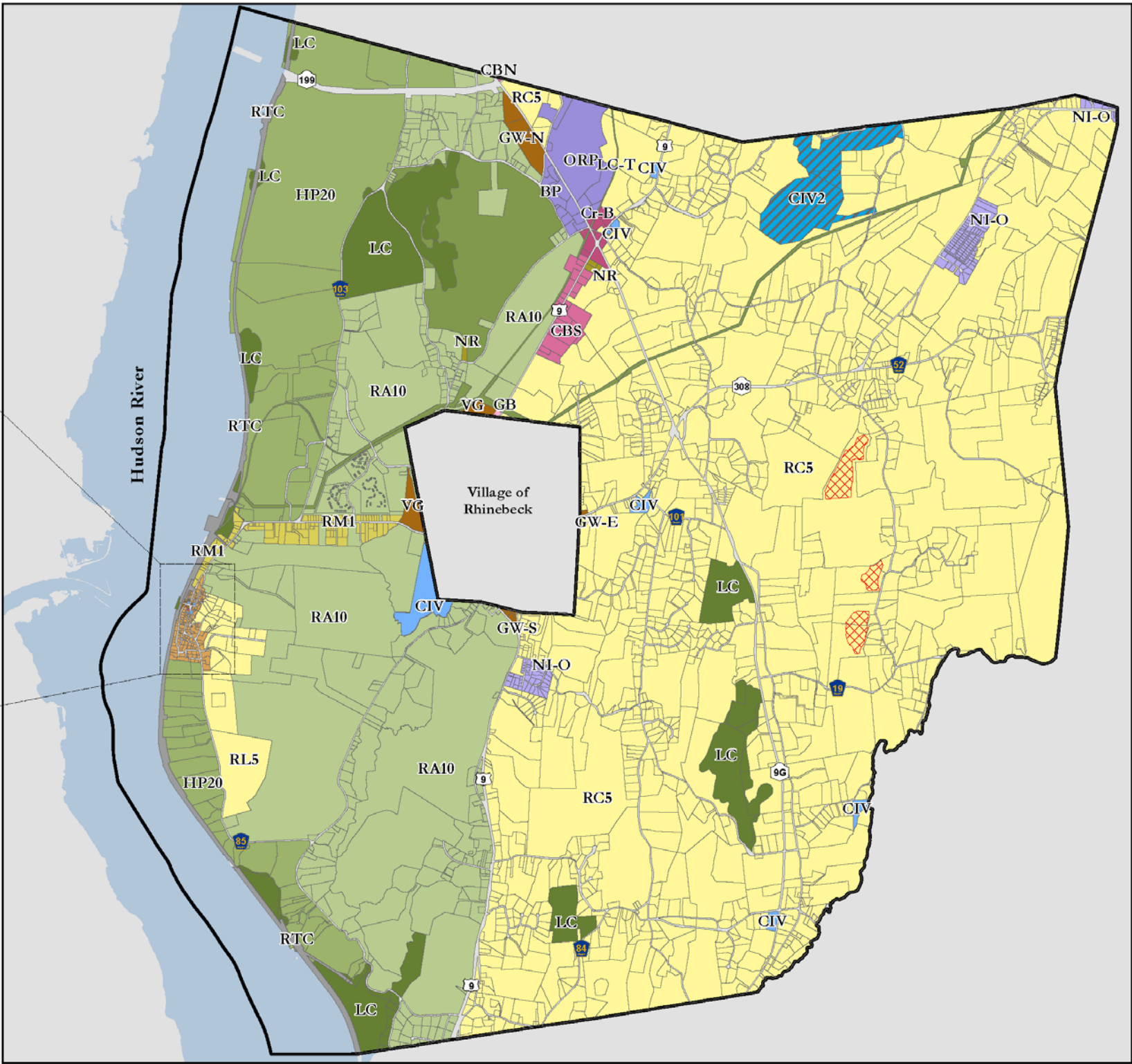
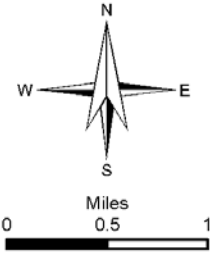
Town of Rhinebeck Zoning Map

Map Prepared By Dutchess County
 Department of Planning and Development
 November 2015
 Amended April 18, 2017

Zoning District boundaries are enacted by the Municipalities. These maps are based on information supplied by the Municipalities, per agreement with Dutchess County Department of Planning and Development. Zoning district lines are updated at the pleasure of the Municipality. Check with local municipal officials for most recent boundary delineations.

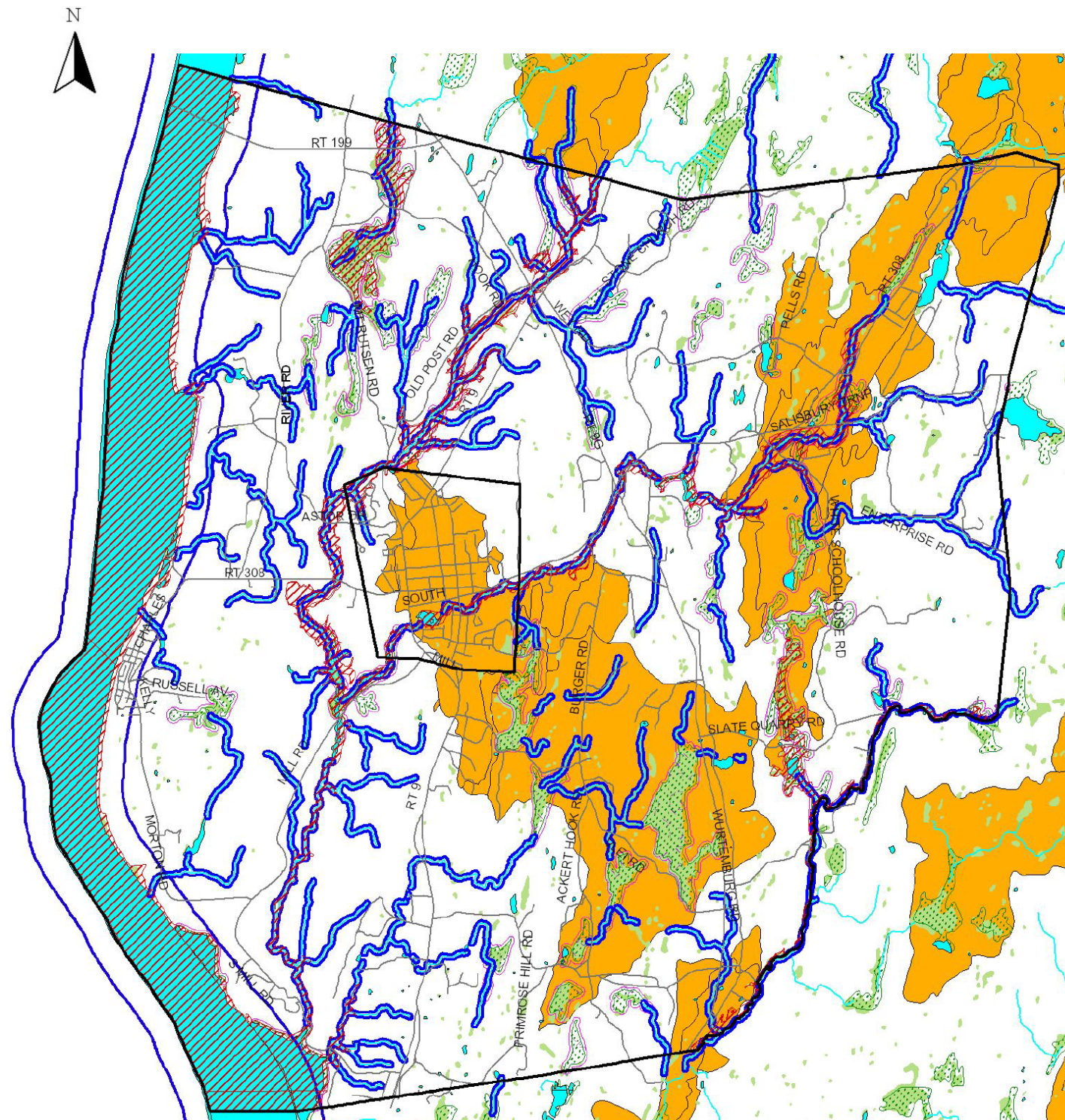
Legend

- PARCEL BOUNDARIES
- MUNICIPAL BOUNDARIES
- Zoning Districts**
- BP, BUSINESS PARK
- CBN, COMMUNITY BUSINESS NORTH
- CBS, COMMUNITY BUSINESS SOUTH
- CIV, CIVIC
- CR-B, CROSSROADS BUSINESS
- GB, GENERAL BUSINESS
- GW-E, GATEWAY EAST
- GW-N, GATEWAY NORTH
- GW-S, GATEWAY SOUTH
- HP20, HISTORIC PRESERVATION
- LC, LAND CONSERVATION
- LC-T, LAND CONSERVATION TRAIL
- NI-O, NEIGHBORHOOD INFILL OVERLAY DISTRICT
- NR, NEIGHBORHOOD RESIDENTIAL
- ORP, OFFICE RESEARCH PARK
- RA10, RURAL AGRICULTURAL
- RC-B, RHINECLIFF BUSINESS
- RC-H, RHINECLIFF HAMLET
- RC-HT, RHINECLIFF TRANSITION HAMLET
- RC5, RURAL COUNTRYSIDE
- RL5, RESIDENTIAL LOW DENSITY
- RM1, RESIDENTIAL MEDIUM DENSITY
- RTC, RAIL TRANSPORTATION CORRIDOR
- VG, VILLAGE GATEWAY
- CIV2, CIVIC 2 DISTRICT
- MI-O, MINING OVERLAY



ZONING








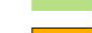

Town of Rhinebeck Zoning Law



Water Resources Overlay District

Sources: Wetland, aquifers, stream and lake data was obtained from the Dutchess County Environmental Management Council. Tax parcels were obtained from the Dutchess County Office of Real Property.

Legend

-  Municipal Boundaries
-  Roads
-  Land Conservation Stream Corridor District (LC-S)
-  Flood Fringe Overlay District (FF-O)
-  Streams, Lakes & Ponds
-  DEC Wetland 100' Buffer
-  DEC Freshwater Wetlands
-  National Wetland Inventory
-  Aquifers

The wetlands shown here on are the approximate location of freshwater wetlands. No attempt has been made to illustrate all wetland areas which may be subject to regulation. Locations of wetlands require actual field identification during appropriate growing season in accordance with federal, state and local wetland identification techniques. For a final determination of the actual location of a DEC wetland it is necessary to contact the NYS DEC Region 3 office. Final determination of the actual location of a NWI wetland will be made during project review by the Planning Board and may require contact with the Army Corps of Engineers (ACOE) for a jurisdictional determination. Wetlands regulated by the Town of Rhinebeck are identified using the same technique as the ACOE. Readers are also encouraged to consult Figure 7 - Town of Rhinebeck's Significant Habitats (see Volume II of the Comprehensive Plan).

**Prepared for the Town of Rhinebeck by
GREENPLAN**

December 2009