

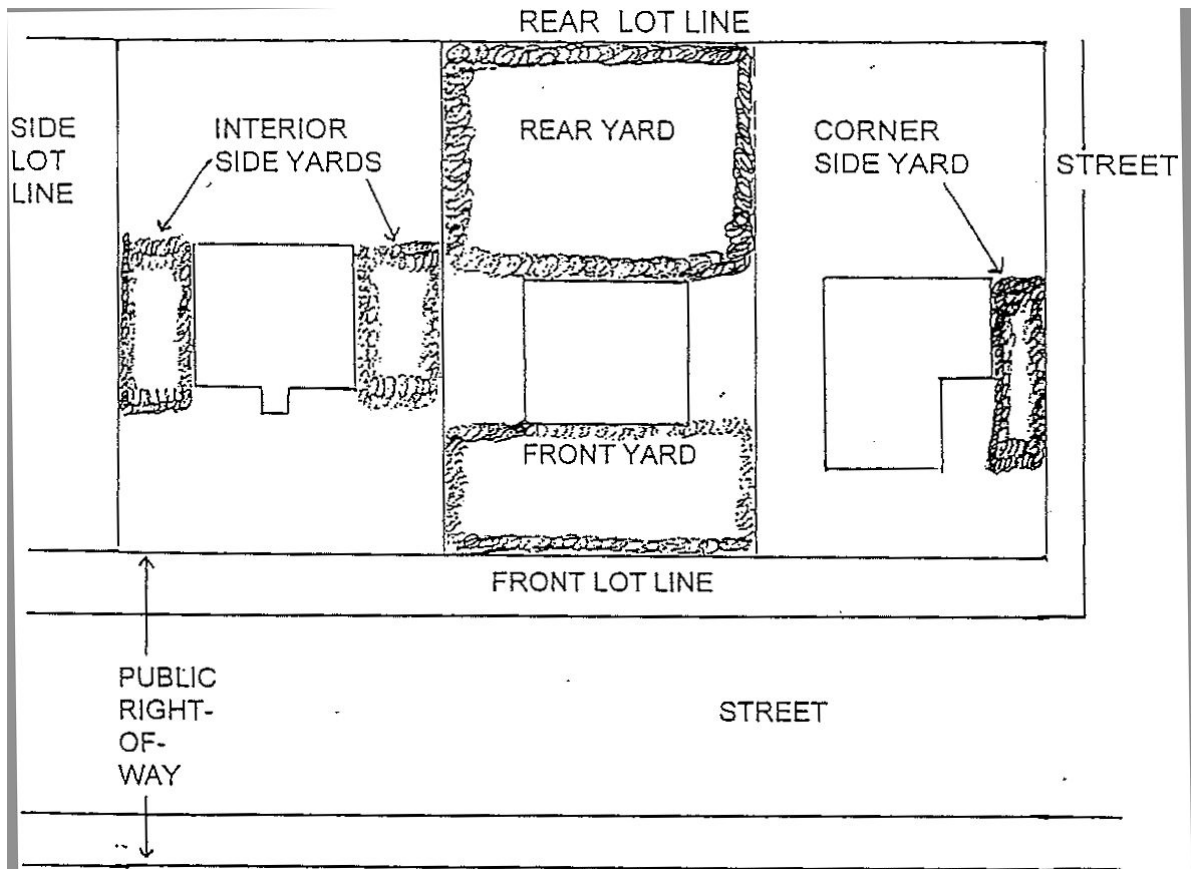
ZONING CODE

18 Attachment 1

Village of Suamico

Illustrations

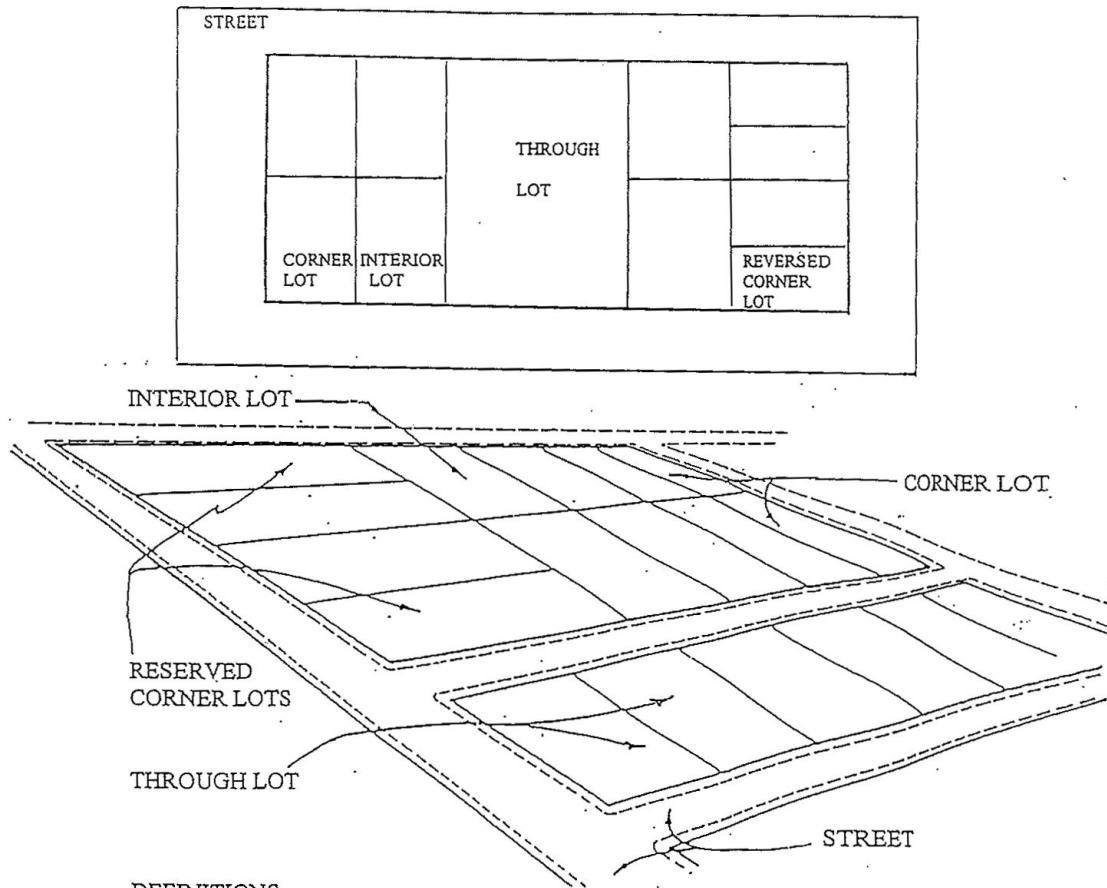
Exhibit 1  
REQUIRED YARDS — ILLUSTRATED



SUAMICO CODE

EXHIBIT 2

EXAMPLE OF LOT TYPES



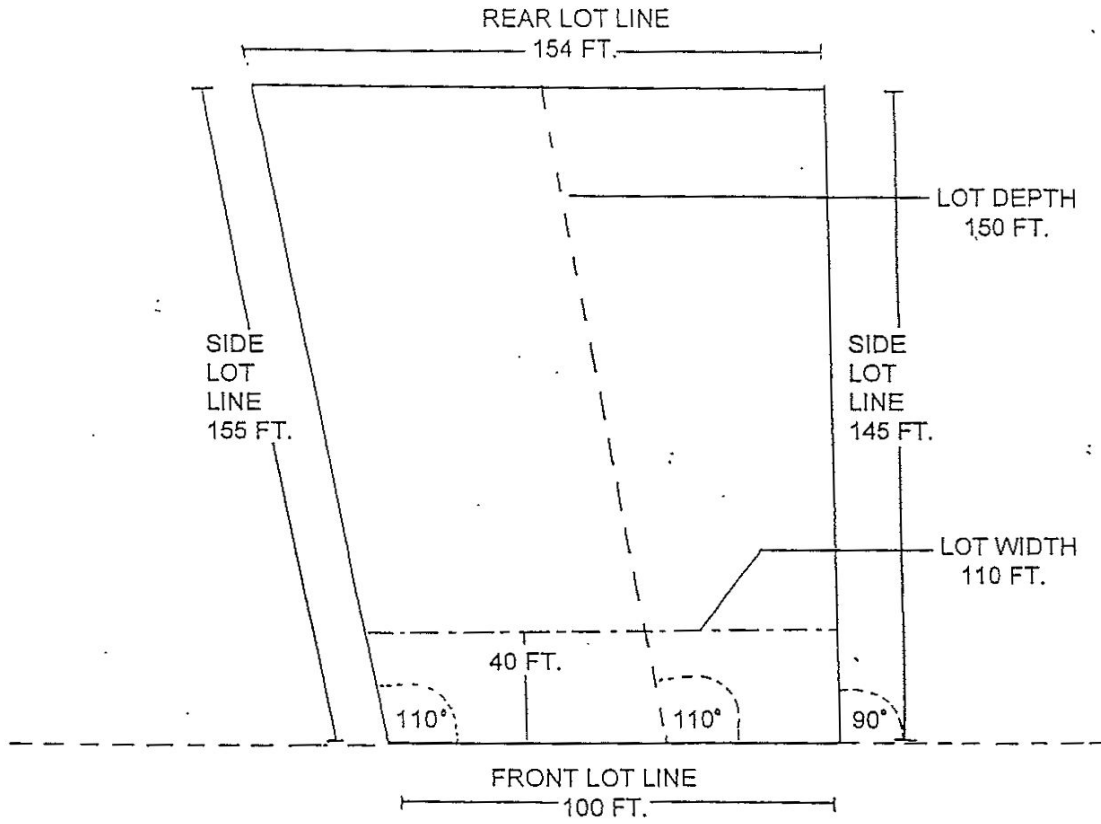
DEFINITIONS

- CORNER LOT** is a lot abutting on two streets at their intersection, where the angle of intersection is not more than 135 degrees.
- REVERSED CORNER LOT** is a corner lot the street side lot line of which is substantially a continuation of the front lot line of the first lot to its rear.
- INTERIOR LOT** is a lot other than a corner or reserved corner lot.
- THROUGH LOT** is a lot having a pair of opposite lot lines along two more or less parallel public streets. On a through lot both street lines shall be deemed front lot lines.

ZONING CODE

EXHIBIT 3

LOT WIDTH AND LOT DEPTH EXPLAINED



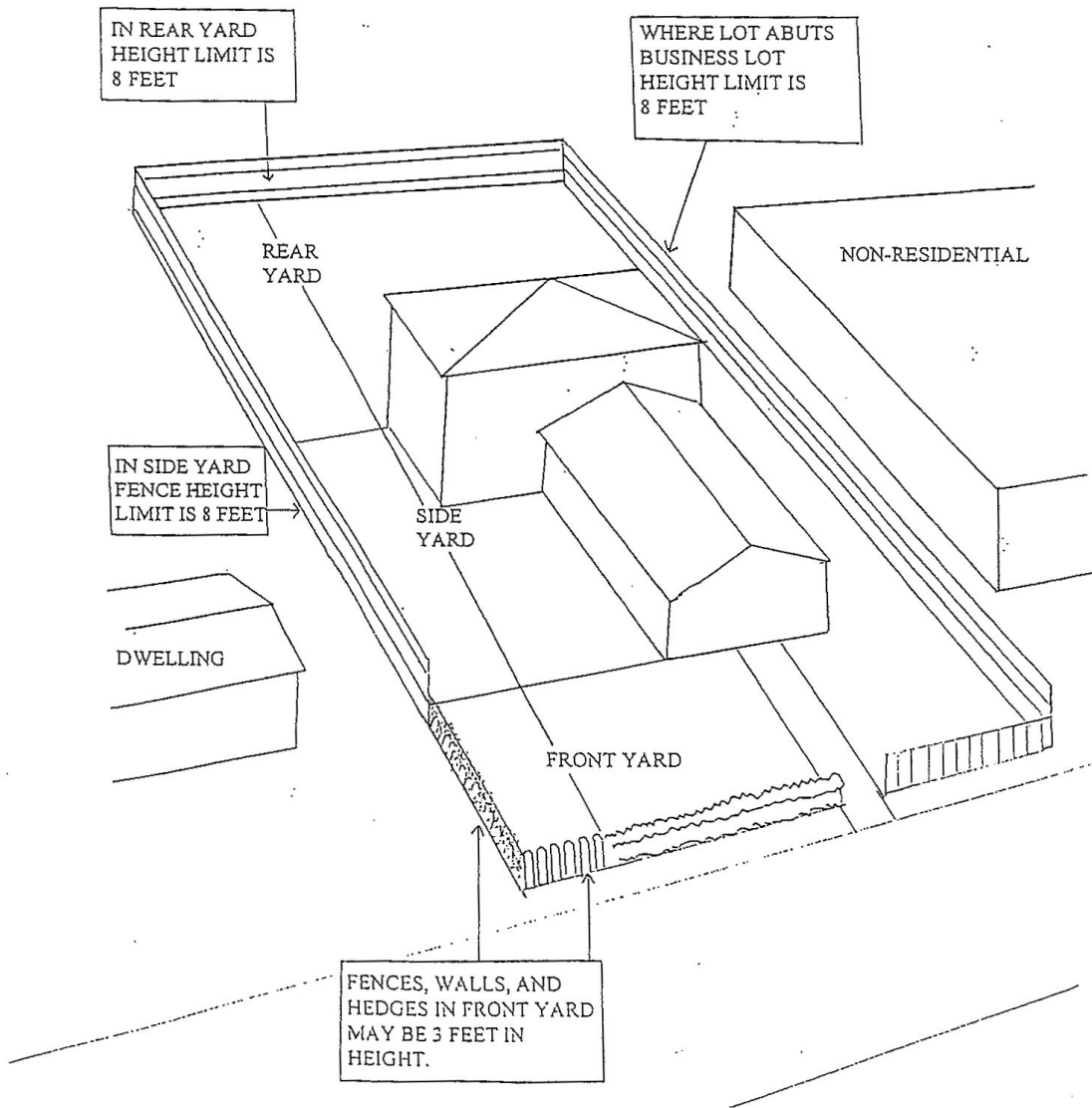
LOT WIDTH - The horizontal distance between the side lot lines of a lot, measured at the widest width within the first 40 feet of lot depth immediately in back of the front right-of-way. It must be parallel to street.

LOT DEPTH - The mean horizontal distance between the front lot line and the rear lot line of a lot measured within the lot boundaries.

SUAMICO CODE

EXHIBIT 4

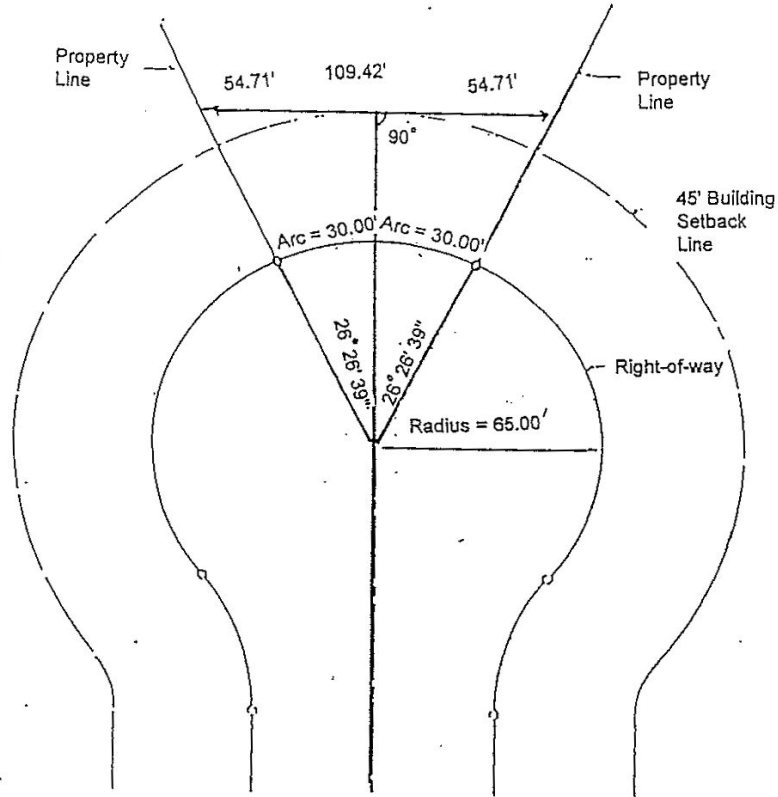
FENCES, WALLS, AND OTHER STRUCTURES IN YARDS HEIGHT LIMITS —  
ILLUSTRATED



ZONING CODE

EXHIBIT 5

65 FOOT RADIUS CUL-DE-SAC  
45 FOOT SETBACK



\*Width at 45' setback = 109.42'  
 Width = 150'  
 Width = 200'  
 Width = 250'

Arc at 65' r-o-w = 60.00'  
 Arc = 77.79'  
 Arc = 99.92'  
 Arc = 110.39'

Central Angle = 52° 53' 18"  
 Central Angle = 68° 34' 26"  
 Central Angle = 84° 32' 50"  
 Central Angle = 97° 18' 16"

\*Minimum frontage of 60 feet will apply

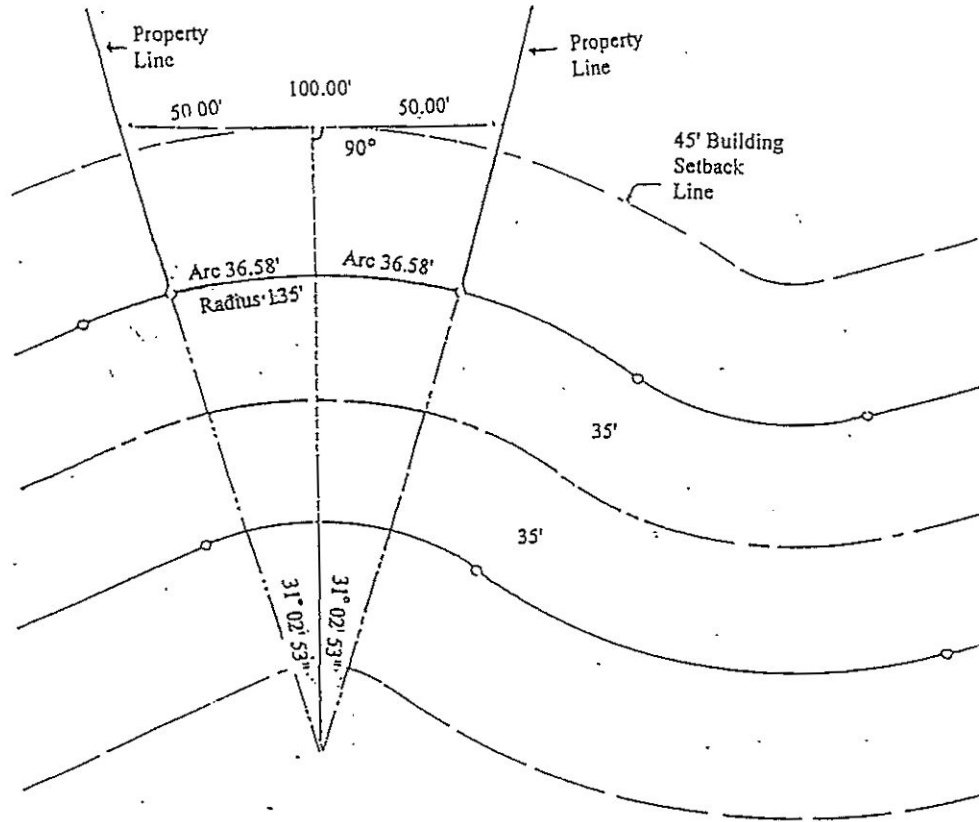
LOT, WIDTH. The horizontal distance between the side lot lines of a lot, measured at the widest width within the first 40 feet of a lot depth immediately in back of the front right-of-way line. It must be parallel to street.

Such minimum lot width may be measured at the building setback line only if said lot is located on the outer radius of a curved street such as a cul-de-sac. However, in no case shall the frontage measured at the right-of-way line be less than 60 feet wide. When measuring at the building setback, on a curved street, the width shall be at right angles to a radial line.

SUAMICO CODE

EXHIBIT 6

135 FOOT RADIUS (RIGHT OF WAY)  
45 FOOT SETBACK

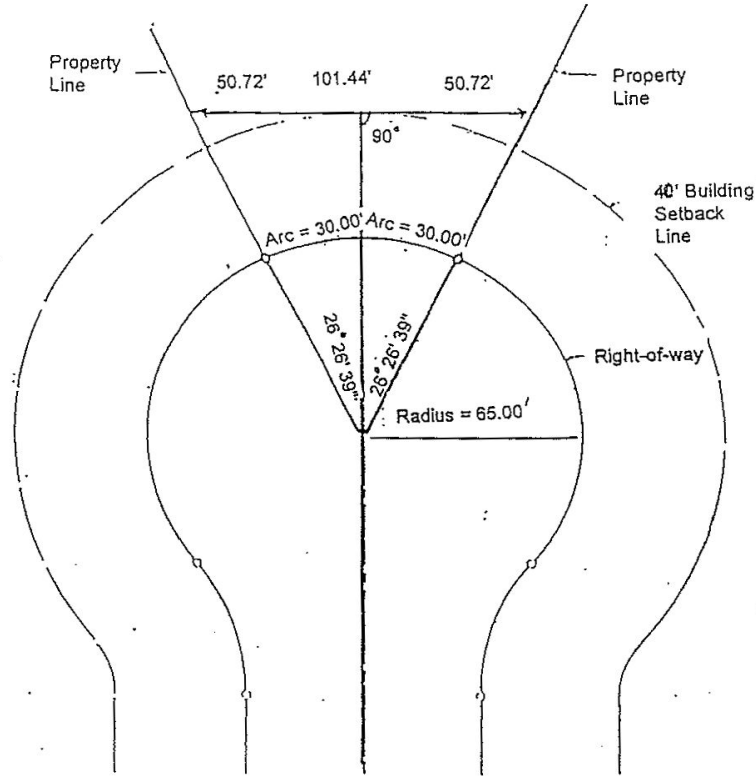


<u>Width at 45' setback</u>	<u>Arc at 135' Radius</u>	<u>Central Angle</u>
100'	73.16'	31° 02' 53"
150'	106.59'	45° 14' 23"
200'	136.92'	58° 06' 33"
250'	163.89'	69° 33' 20"

ZONING CODE

EXHIBIT 7

65 FOOT RADIUS CUL-DE-SAC  
40 FOOT SETBACK



*Width at 40' setback = 101.44'	Arc at 65' r-o-w = 60.00'	Central Angle = 52° 53' 18"
Width = 150'	Arc = 80.63'	Central Angle = 71° 04' 31"
Width = 200'	Arc = 98.93'	Central Angle = 87° 12' 20"
Width = 250'	Arc = 113.38'	Central Angle = 99° 56' 22"

\*Minimum frontage of 60 feet will apply

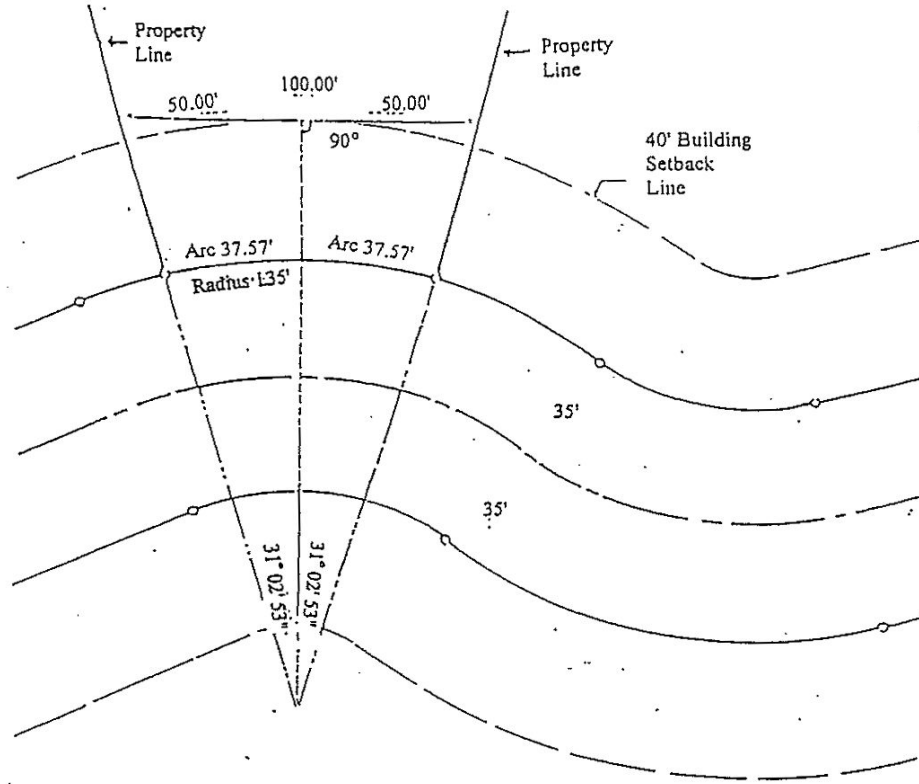
LOT, WIDTH. The horizontal distance between the side lot lines of a lot, measured at the widest width within the first 40 feet of a lot depth immediately in back of the front right-of-way line. It must be parallel to street.

Such minimum lot width may be measured at the building setback line only if said lot is located on the outer radius of a curved street such as a cul-de-sac. However, in no case shall the frontage measured at the right-of-way line be less than 60 feet wide. When measuring at the building setback, on a curved street, the width shall be at right angles to a radial line.

SUAMICO CODE

EXHIBIT 8

135 FOOT RADIUS (RIGHT OF WAY)  
45 FOOT SETBACK



<u>Width at 40' setback</u>	<u>Arc at 135' Radius</u>	<u>Central Angle</u>
100'	75.14'	31 53' 27"
150'	109.32'	46 23' 50"
200'	140.17'	59 29' 23"
250'	167.47'	71 04' 31"

ZONING CODE

EXHIBIT 9

