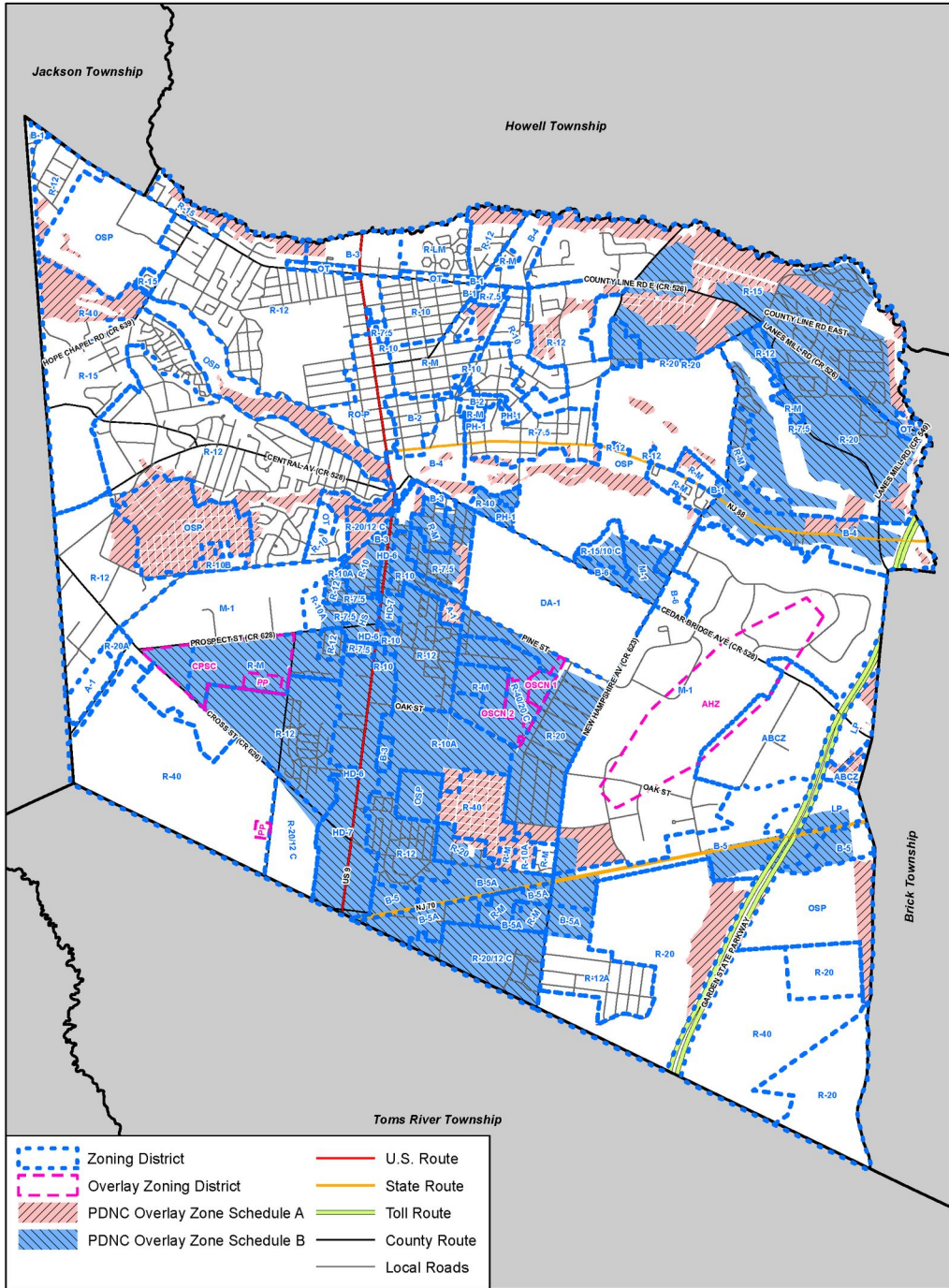


UNIFIED DEVELOPMENT ORDINANCE

18 Attachment 2



T&M Associates
 11 Tindall Road
 Middletown, NJ 07748-2792
 Phone: 732-671-6400
 Fax: 732-671-7365

0 2,000 4,000 8,000 Feet

Prepared by: JAC, 11/02/2017

Source: NJDEP, NJDOT, T&M Associates
 File Path: G:\Projects\LAKE\00600\GIS\Projects\Attachment 2 -
 Planned Development Non-Contiguous Cluster (PDNC) Overlay Zone (Schedule A and Schedule B).mxd

Attachment 2: Planned Development Non-Contiguous Cluster (PDNC) Overlay Zone (Schedule A and Schedule B) Lakewood Township, Ocean County, New Jersey

NOTE: This map was developed using New Jersey Department of Environmental Protection Geographic Information System digital data, but this secondary product has not been verified by NJDEP and is not State-authorized.