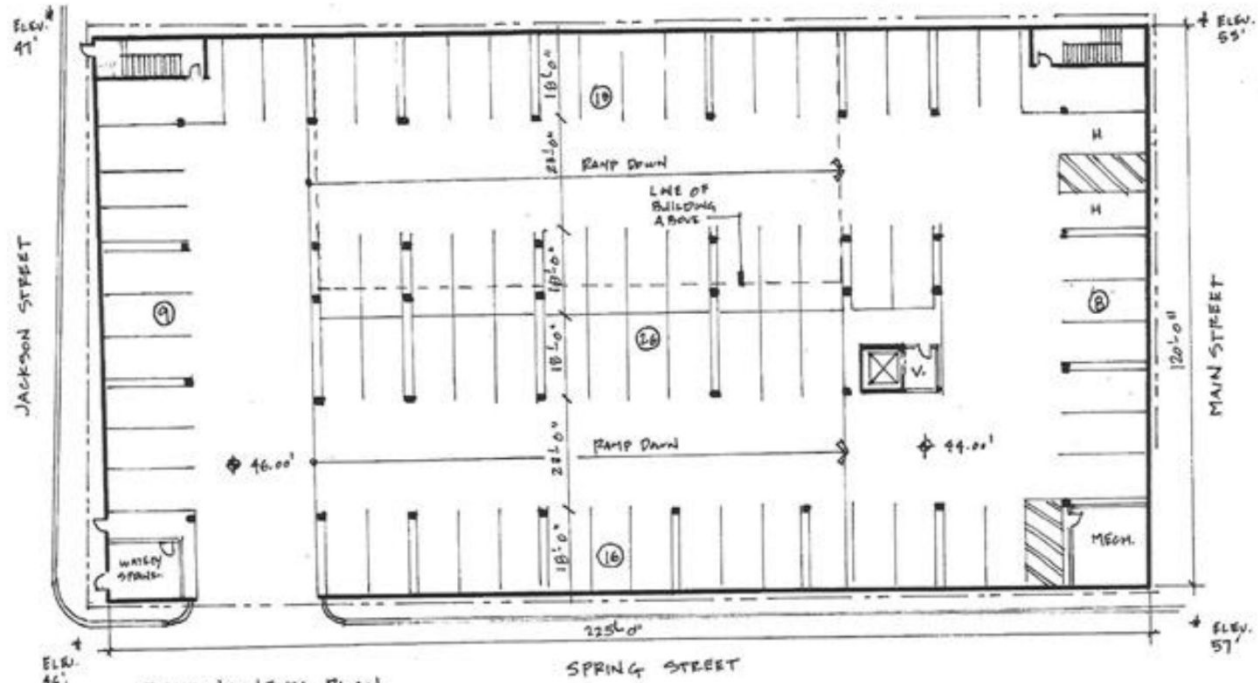


DEVELOPMENT REGULATIONS

34 Attachment 4

Borough of Matawan
 Architectural Concept Plans and Elevations for 160 Main Mixed-Use District
 [Added 6-17-2025 by Ord. No. 2025-12]



PARKING LEVEL PLAN

SCALE: 1" = 20'-0"

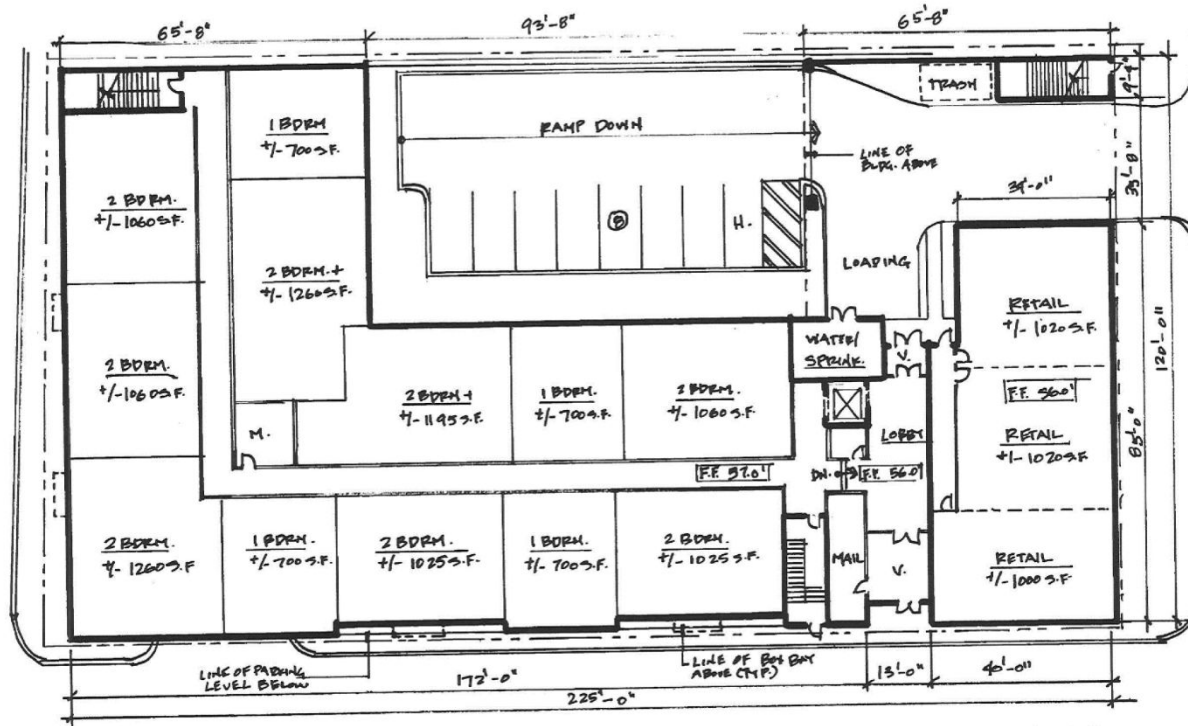
PARKING
77 STRUCTURED PARKING SPACES
8 SURFACE PARKING SPACES
85 TOTAL

UNITS
18 (1) BDRM.
26 (2) BDRM.
2 (3) BDRM.
46 TOTAL

SCHEME 6

160 MAIN, L.L.C.
 MATAWAN, N.J.
 SITA ARCHITECTS
 3/2/2023

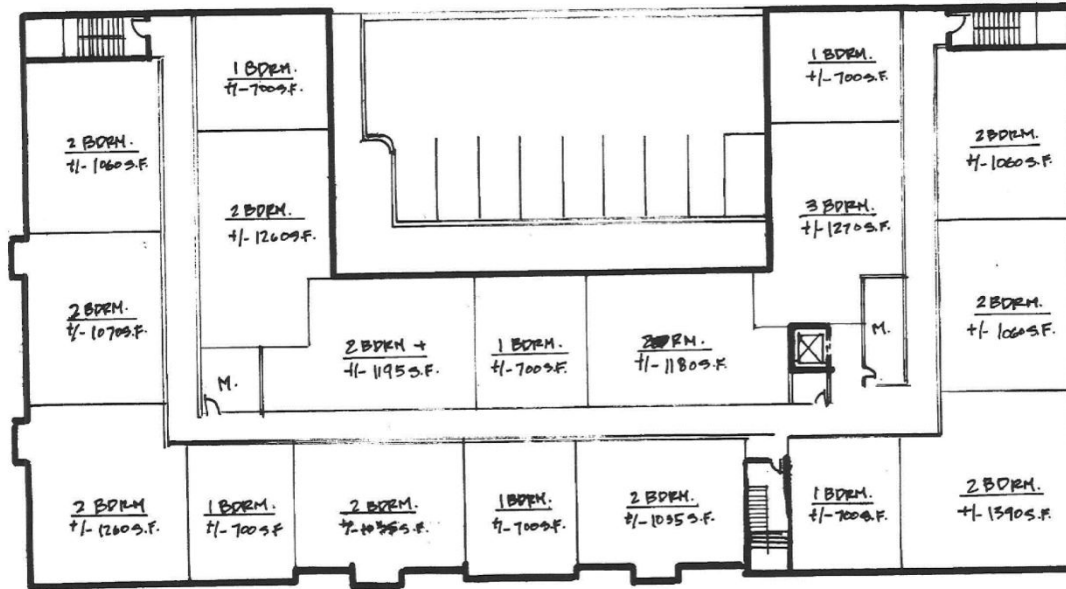
MATAWAN CODE



GROUND FLOOR PLAN
SCALE: 1" = 20'-0"

SCHEME G
160 MAIN, LLC.
MATAWAN, N.J.
S+T ARCHITECTS.
3/2/2025

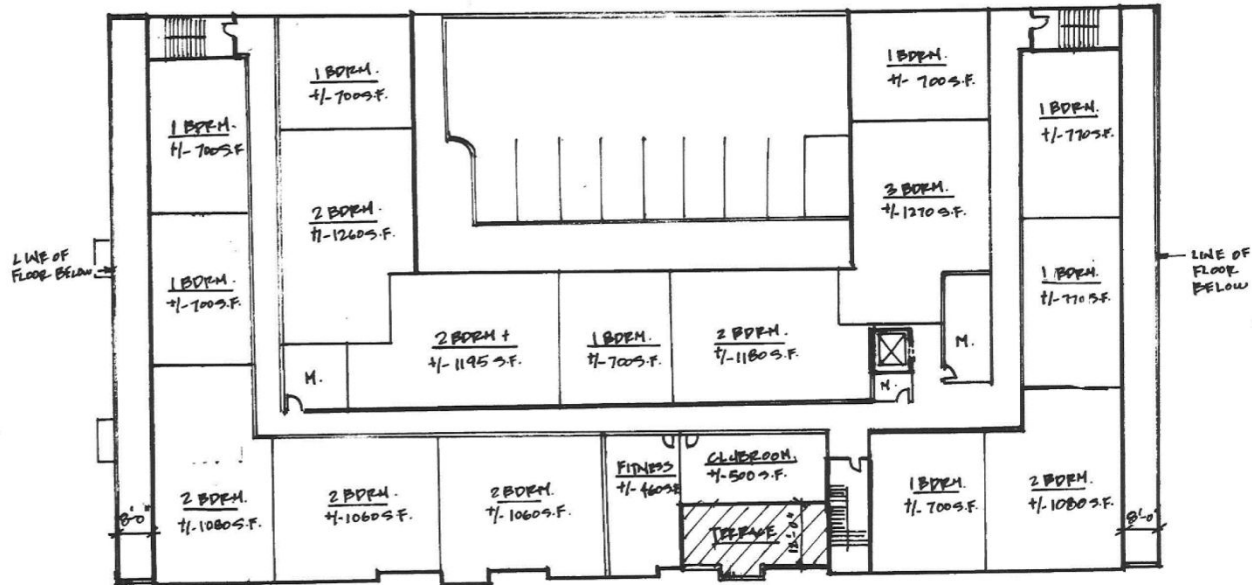
DEVELOPMENT REGULATIONS



SECOND FLOOR PLAN.
SCALE: 1" = 20'-0"

SCHEME G
160 MAIN, L.L.C.
MATAWAN, N.J.
S+T ARCHITECTS.
3/2/2023

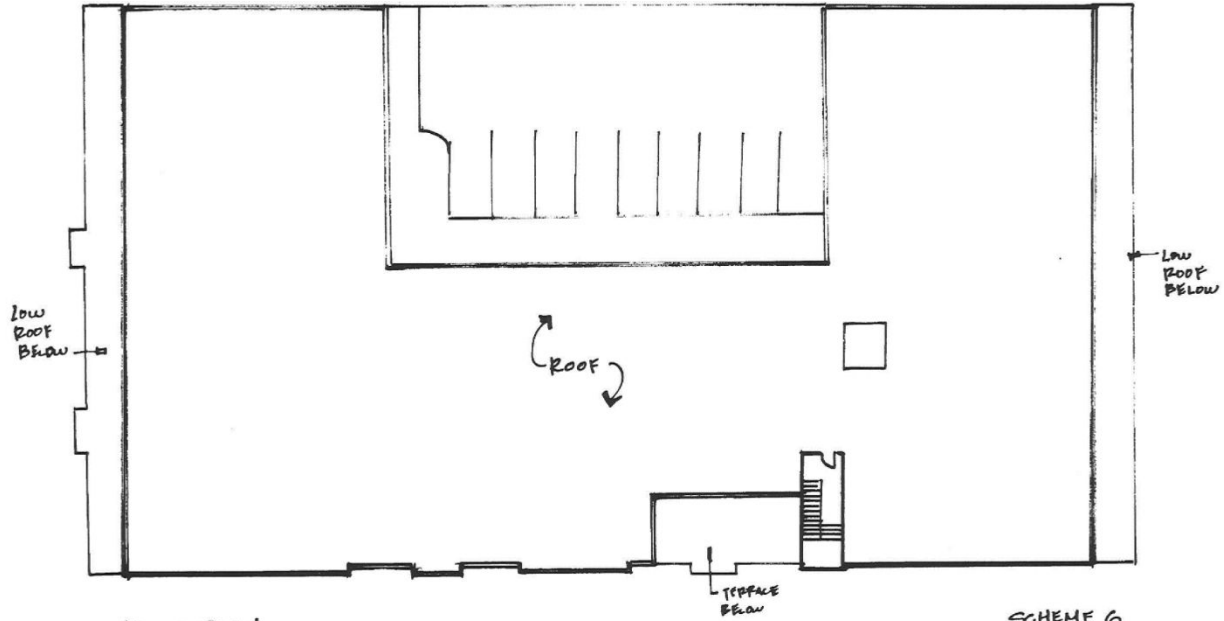
MATAWAN CODE



THIRD FLOOR PLAN
SCALE: 1"=20'-0"

SCHEME G
160 MAIN, L.L.C.
MATAWAN, N.J.
S+T ARCHITECTS.
3/2/2023

DEVELOPMENT REGULATIONS



ROOF PLAN
SCALE: 1"=20'-0"

SCHEME G
100 MAIN, L.L.C.
MATAWAN, N.J.
STI ARCHITECTS.
3/2/2023

MATAWAN CODE



SONNENFELD + TROCCHIA
ARCHITECTS, P.A.
53 Main Street, Holmdel, NJ | 732.946.7777 | www.st-architects.com

160 MAIN, LLC. | MATAWAN, NJ
15 MARCH, 2023

DEVELOPMENT REGULATIONS



MAIN ST. ELEVATION
SCALE: 1/8" = 1'-0"



SONNENFELD + TROCCHIA
ARCHITECTS, P.A.
53 Main Street, Holmdel, NJ | 732.946.7777 | www.st-architects.com

160 MAIN, LLC. | MATAWAN, NJ
15 MARCH, 2023