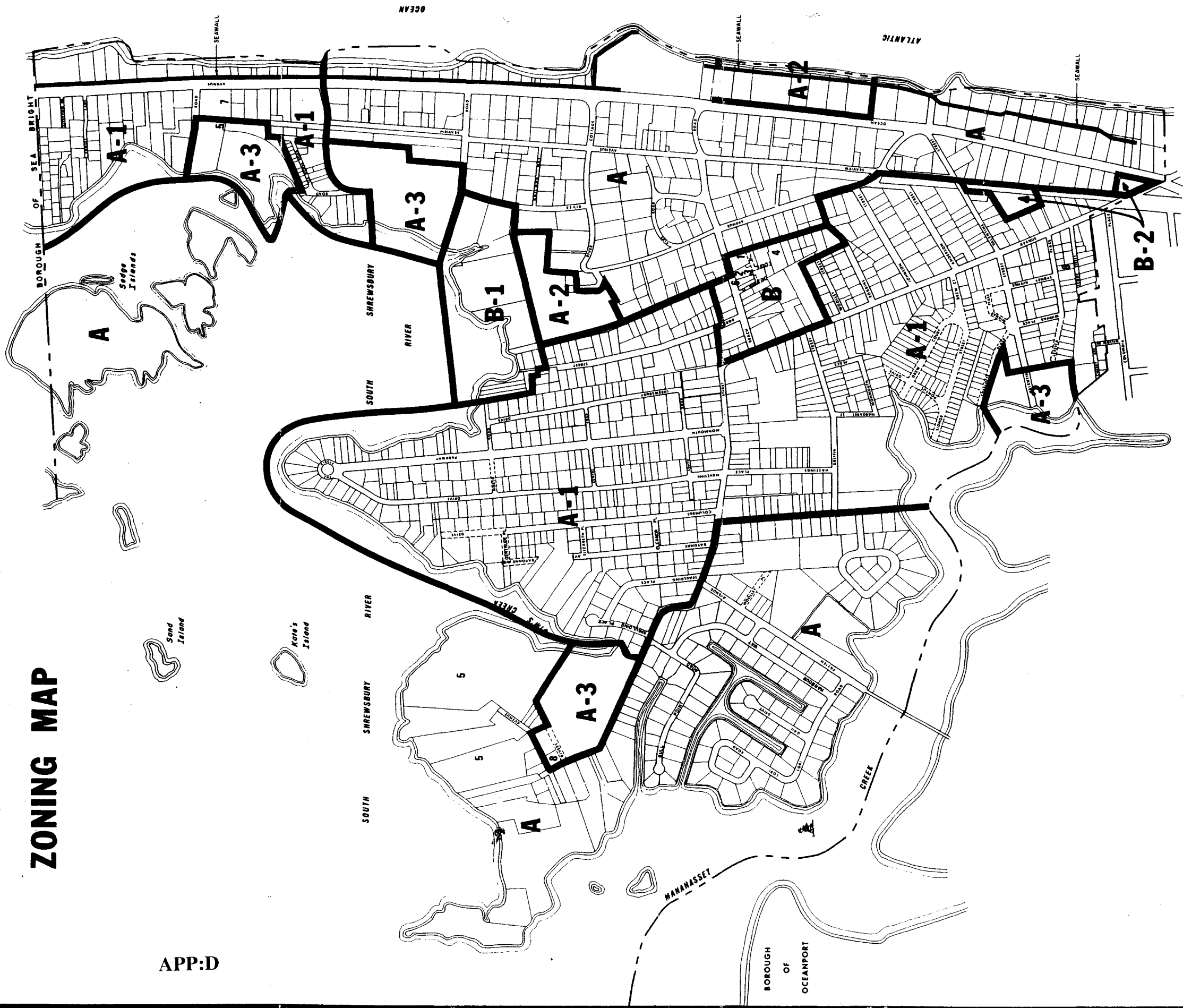


APPENDIX D

# ZONING MAP

APP:D



CITY OF LONG BRANCH

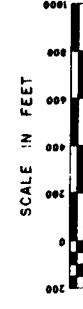
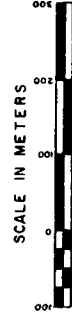
## ZONING DISTRICTS

### RESIDENTIAL

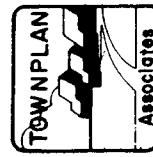
- A Low Density - Single Family
- A-1 Medium Density - Single Family
- A-2 High Rise
- A-3 Garden Apartment / Townhouse

### BUSINESS

- B Retail
- B-1 Marina
- B-2 Special



**BOROUGH OF MONMOUTH BEACH  
PLANNING BOARD  
MONMOUTH COUNTY, NEW JERSEY**



Eleven Tindall Road  
Middleton, NJ 08750

REVISED BY TOWNPLAN ASSOCIATES 1978, 1984, 1994  
PREPARED BY MONMOUTH COUNTY PLANNING BOARD 1966 REVISED 1970, 1971