

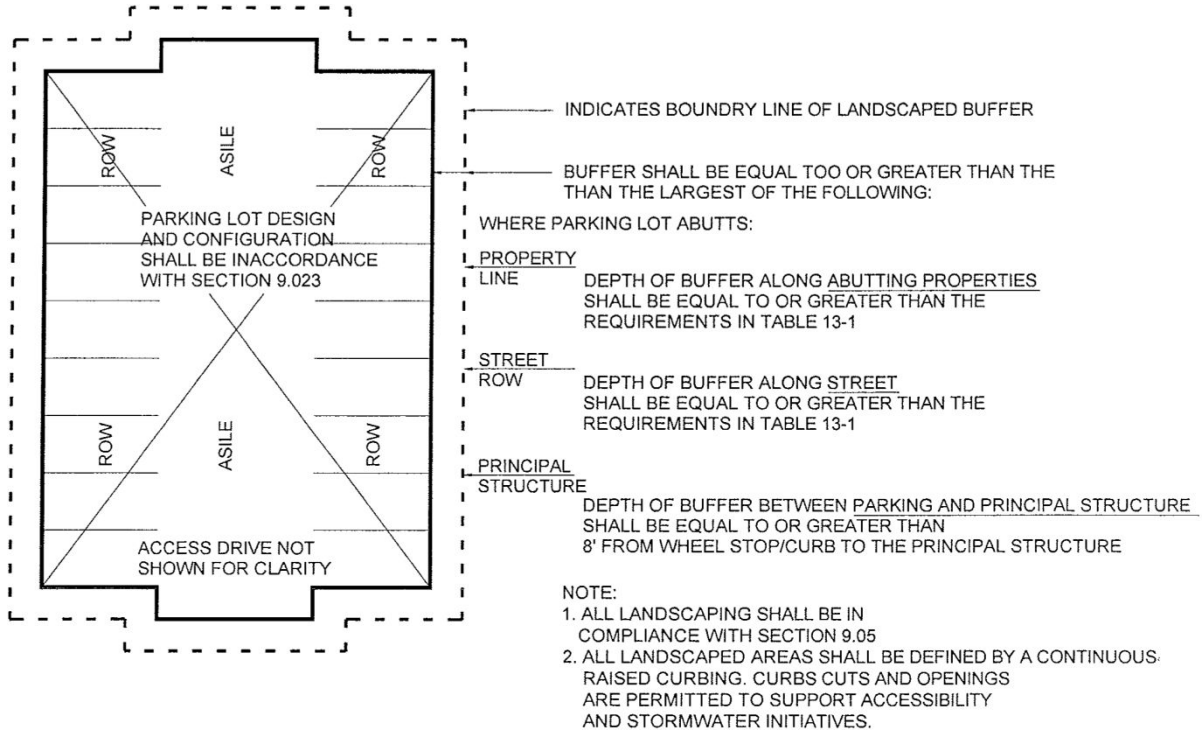
ZONING

300 Attachment 7

Town of West Springfield

Diagram 9-1

(Refer to § 300-9.0E and Table 13-1.)



MINIMUM SETBACK/
LANDSCAPE BUFFERS FOR
SINGLE AISLE PARKING LOTS
(NO INTERNAL PARKING SPACES)

ZONING

Diagram 9-3: Parking Dimensions

| Angle (in Degrees) | Base Module | Vehicle Projection | Aisle Width | Single- Loaded Module | Wall to Inter-lock (8'6") | Interlock to Interlock (8' 6") | Curb to Curb | Overhang |
|-----------------------|----------------|-----------------------|-------------|-----------------------------|------------------------------|--------------------------------------|----------------|----------|
| Θ | M ₁ | VP | A | M ₂ | M ₃ | M ₄ | M ₅ | o |
| 30 | 41' 2" | 15' 1" | 11' 0" | 26' 1" | 37' 6" | 33' 10" | 38' 8" | 1' 3" |
| 35 | 43' 0" | 16' 0" | 11' 0" | 27' 0" | 39' 6" | 36' 0" | 40' 2" | 1' 5" |
| 40 | 44' 10" | 16' 11" | 11' 0" | 27' 11" | 41' 7" | 38' 4" | 41' 8" | 1' 7" |
| 45 | 47' 0" | 17' 7" | 11' 10" | 29' 5" | 44' 0" | 41' 0" | 43' 6" | 1' 9" |
| 50 | 48' 6" | 18' 2" | 12' 2" | 30' 4" | 45' 9" | 43' 0" | 44' 8" | 1' 11" |
| 55 | 50' 0" | 18' 8" | 12' 8" | 31' 4" | 47' 7" | 45' 2" | 45' 10" | 2' 1" |
| 60 | 51' 6" | 19' 0" | 13' 6" | 32' 6" | 49' 4" | 47' 2" | 47' 2" | 2' 2" |
| 65 | 53' 0" | 19' 2" | 14' 8" | 33' 10" | 51' 2" | 49' 4" | 48' 6" | 2' 3" |
| 70 | 54' 0" | 19' 3" | 15' 6" | 34' 9" | 52' 7" | 51' 2" | 49' 4" | 2' 4" |
| 75 | 55' 0" | 19' 1" | 16' 10" | 35' 11" | 53' 10" | 50' 10" | 50' 2" | 2' 5" |
| 90 | 59' 0" | 18' 0" | 23' 0" | 41' 0" | 59' 0" | 59' 0" | 54' 0" | 2' 6" |

| Width of Stall | | | | | | | |
|------------------|-----------|------------------|-----------|------------------|-----------|------------------|-----------|
| 8'3" | | 8'6" | | 8'9" | | 9'0" | |
| Width Projection | Interlock | Width Projection | Interlock | Width Projection | Interlock | Width Projection | Interlock |
| WP | i | WP | i | WP | i | WP | i |
| 16' 6" | 3' 7" | 17' 0" | 3' 8" | 17' 6" | 3' 9" | 18' 0" | 3' 11" |
| 13' 5" | 3' 5" | 14' 10" | 3' 6" | 15' 3" | 3' 7" | 15' 8" | 3' 8" |
| 12' 10" | 3' 2" | 13' 3" | 3' 3" | 13' 8" | 3' 4" | 14' 0" | 3' 5" |
| 11' 8" | 2' 11" | 12' 0" | 3' 0" | 12' 4" | 3' 1" | 12' 9" | 3' 2" |
| 10' 9" | 2' 8" | 11' 1" | 2' 9" | 11' 5" | 2' 10" | 11' 9" | 2' 11" |
| 10' 1" | 2' 4" | 10' 5" | 2' 5" | 10' 8" | 2' 6" | 11' 0" | 2' 7" |
| 9' 6" | 2' 1" | 9' 10" | 2' 2" | 10' 1" | 2' 2" | 10' 5" | 2' 3" |
| 9' 1" | 1' 9" | 9' 5" | 1' 10" | 9' 8" | 1' 10" | 9' 11" | 1' 11" |
| 8' 9" | 1' 5" | 9' 1" | 1' 5" | 9' 4" | 1' 6" | 9' 7" | 1' 6" |
| 8' 6" | 1' 1" | 8' 10" | 1' 1" | 9' 1" | 1' 2" | 9' 4" | 1' 2" |
| 8' 3" | 0' 0" | 8' 6" | 0' 0" | 8' 9" | 0' 0" | 9' 0" | 0' 0" |

WEST SPRINGFIELD CODE

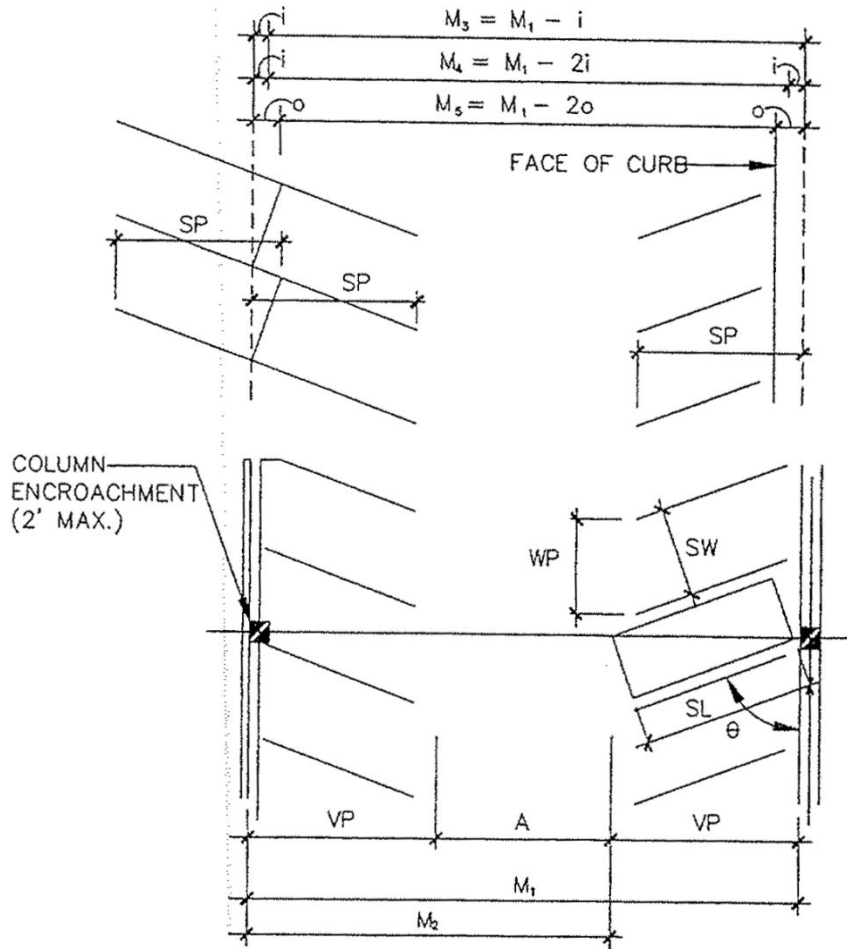
All dimensions are rounded to the nearest inch.

Recommendations assume: (1) one-way traffic for angles less than 90°, and two-way traffic for 90° parking; (2) double-loaded aisles; and (3) a design vehicle that is 6' 7" by 17' 3".

1. In structures or in lots where at least 30% of the stalls have guides or curbs, one foot (0.3 meter) may be deducted from the aisle width and the corresponding module.
2. In stalls that are adjacent to walls, columns, or other obstructions that might interfere with door opening or turning movement into the stall, add at least 10 inches (25 centimeters) to the width of the stall.
3. In stalls that are adjacent to curbs or islands, add at least 10 inches (25 centimeters) to the width of the stall to reduce the risk of tripping.
4. Aisle width may be increased by up to three feet (0.9 meter) to provide a higher level of comfort.
5. Light poles and columns may protrude into a parking module a maximum of two feet (0.6 meter), as long as they do not encroach on more than 30% of the stalls. For example, either a one-foot (0.3-meter) encroachment on both sides of the aisle, or a two-foot (0.6-meter) encroachment on one side only, would be acceptable.
6. Where columns, light poles, or other obstructions encroach on more than 30% of the stalls in the bay, interlock reductions cannot be taken.
7. For each one-inch (2.5-centimeter) addition to the width of the stall — to a maximum stall width of nine feet (2.7 meters) — three inches (7.6 centimeters) can be deducted from the module without decreasing turning comfort.
8. Parallel parking stall length is 23'0".

ZONING

Diagram 9-4: Parking Dimensions Illustrated



Legend

- θ = Angle of Park
- M = Module
- A = Aisle Width
- i = Interlock Reduction
- o = Overhang
- SP = Stripe Projection = 16'-6"
- VP = Vehicle Projection
- WP = Width Projection
- SW = Stall Width
- SL = Stall Length