

ZONING

138 Attachment 7

Town of Southeast – Typology of Architecture [Added 7-12-2007 by L.L. No. 4-2007]

Typology of Architecture Southeast Design Guidelines

Building Style

- *Classic* or *Colonial* style architecture
- Compatible with buildings in surrounding area
- High quality design

Building Size

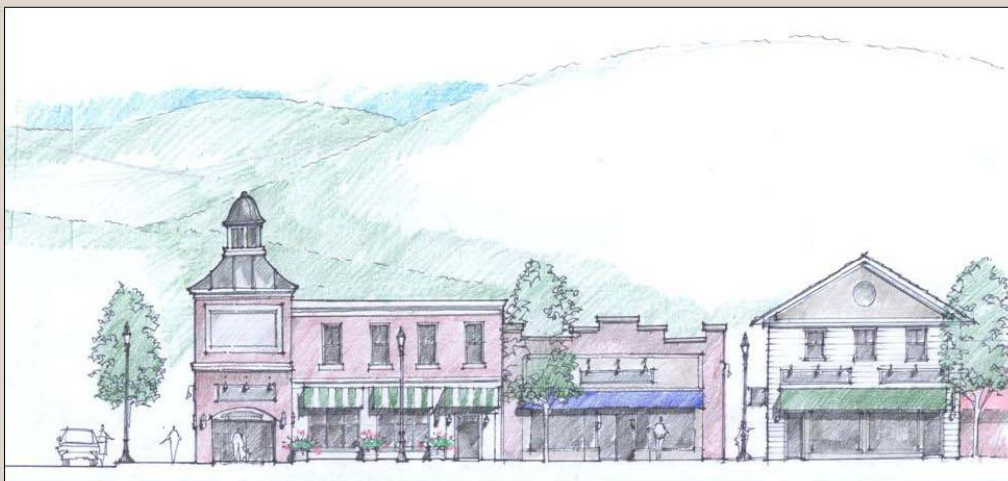
- Avoid large, single-use buildings
- Include several smaller uses in a large building; balance scale of larger use

Building Facades & Materials

- Varied appearance; facade unique to each building
- Create visual interest: Columns, Cornices, Piers, Bay Windows, Pitched Roofs, Clock-towers,
Dormer windows, Balustrades

Dormer windows, Balustrades

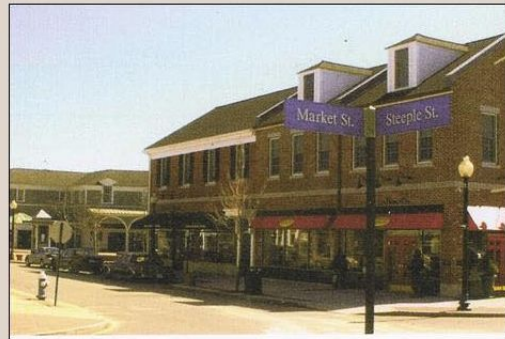
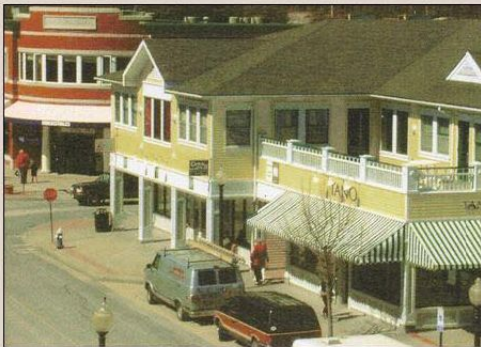
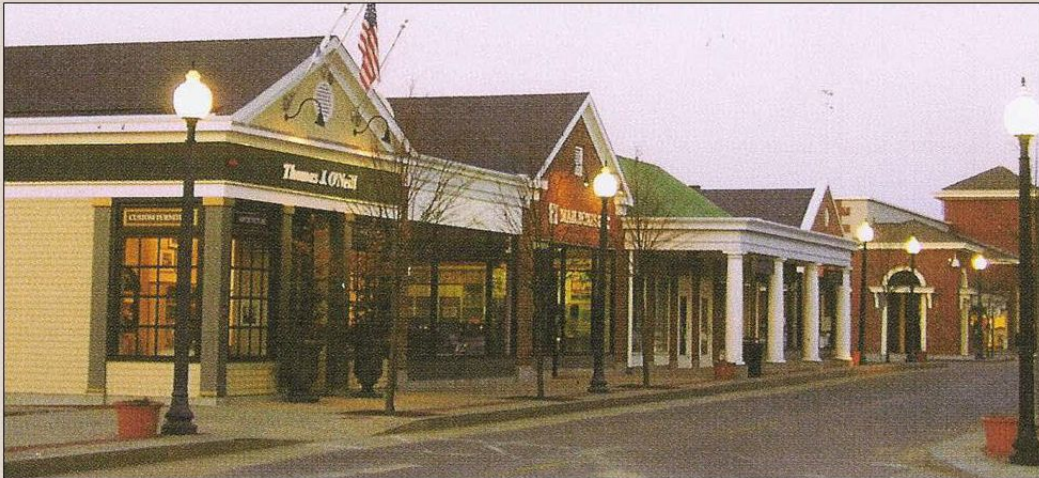
- Define Pedestrian scale: Arcades, Awnings, Roof & Eave-Lines
- Variation in roof heights
- Exterior cladding consistent with building style
- Variety colors & textures
- Natural Building Materials: Shingle siding, Clapboard, Brick & Stone
- Vary the predominant wall plane with façade elements; Window openings & Balconies



TA-I

SOUTHEAST CODE

Typology of Architecture Southeast Design Guidelines



TA-2