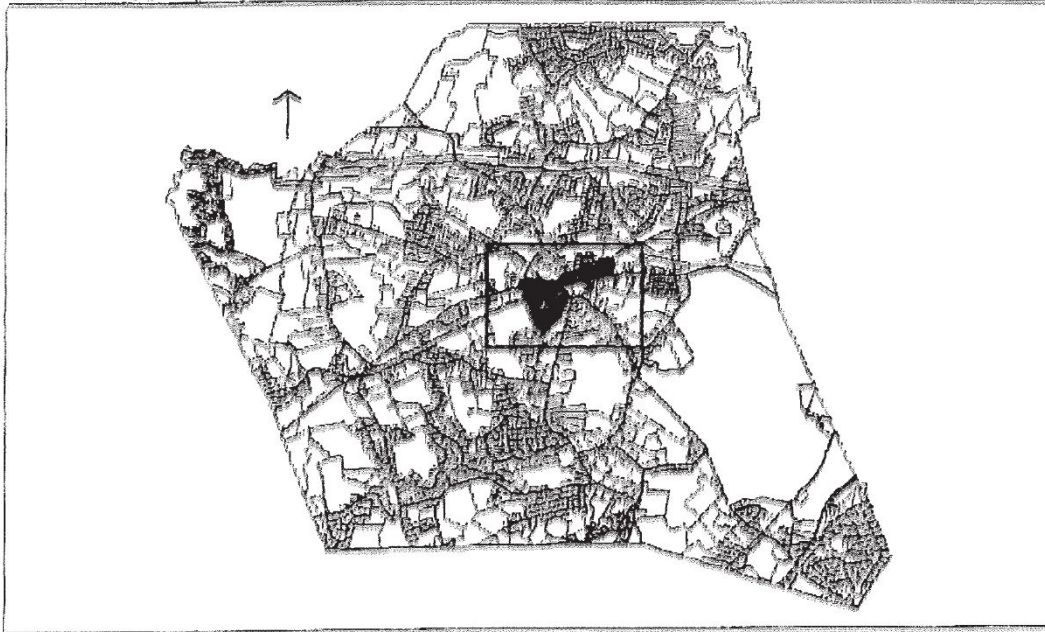


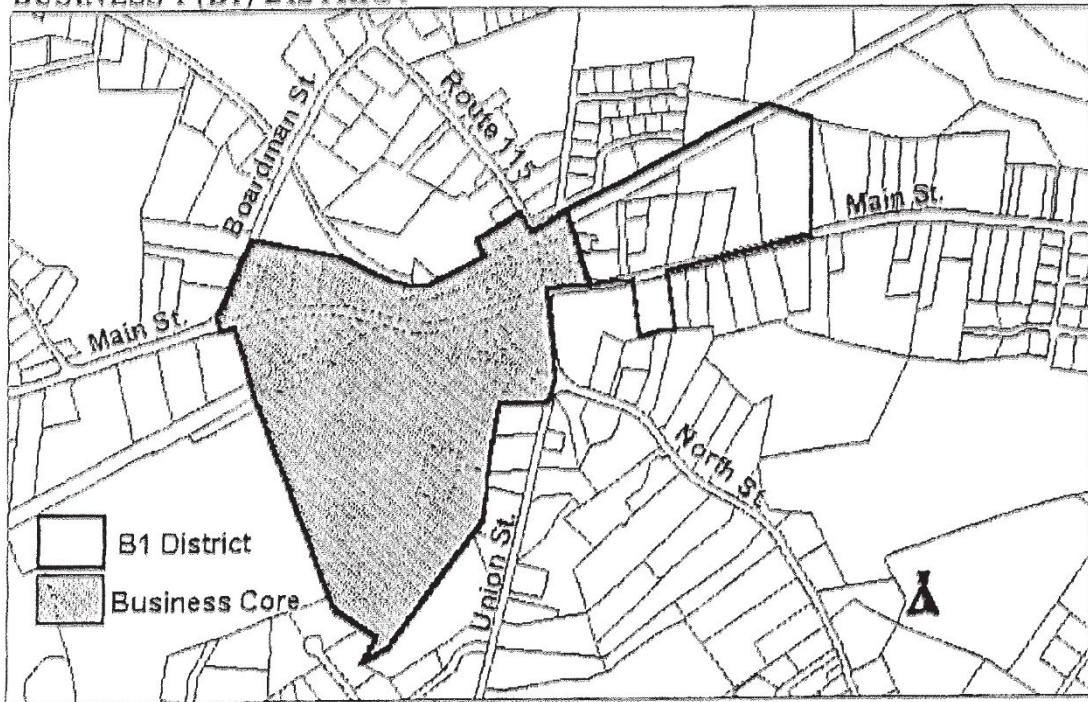
NORFOLK CODE

BUSINESS 1 (B1) ZONING DISTRICT

BUSINESS 1 (B1) LOCUS MAP

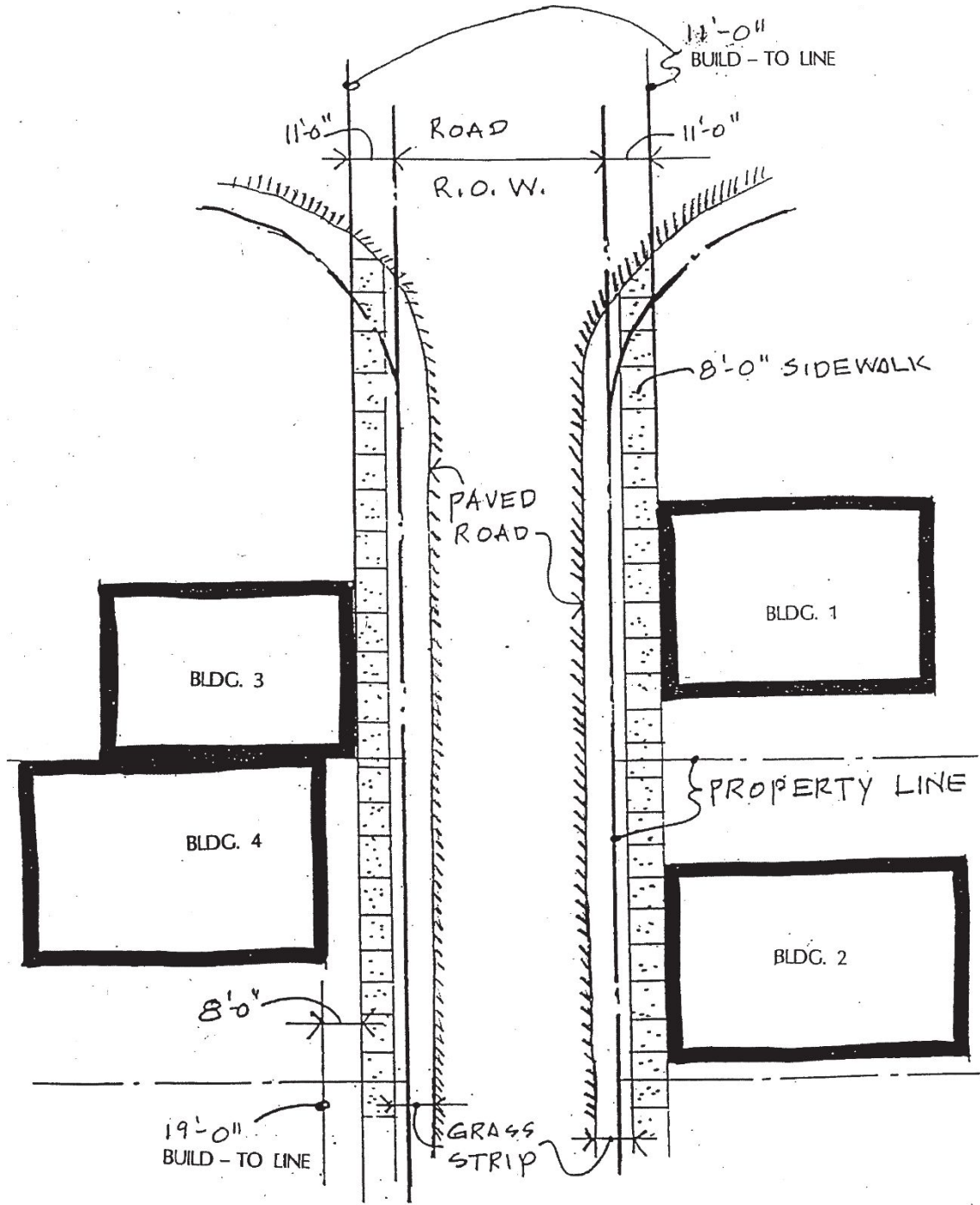


BUSINESS 1 (B1) DISTRICT



EXAMPLE B

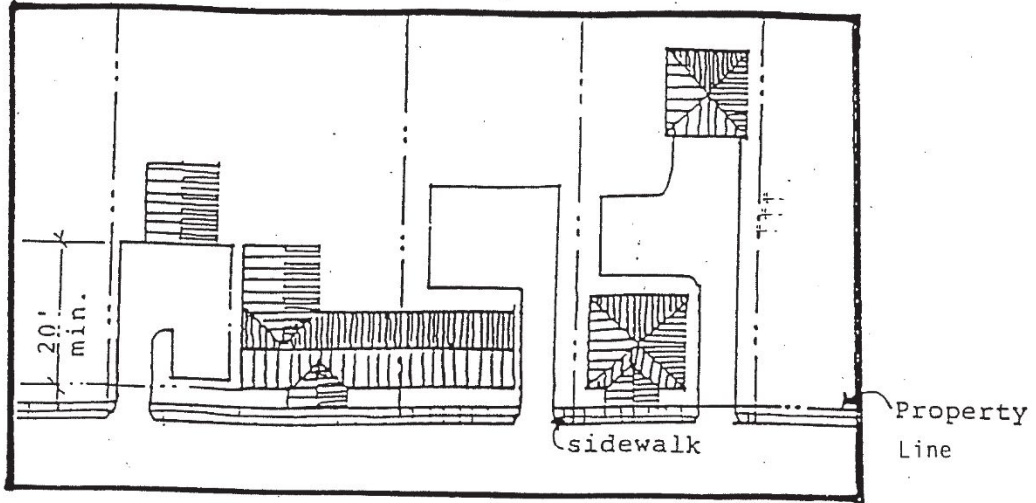
ZONING



BUILD-TO LINE EXAMPLE

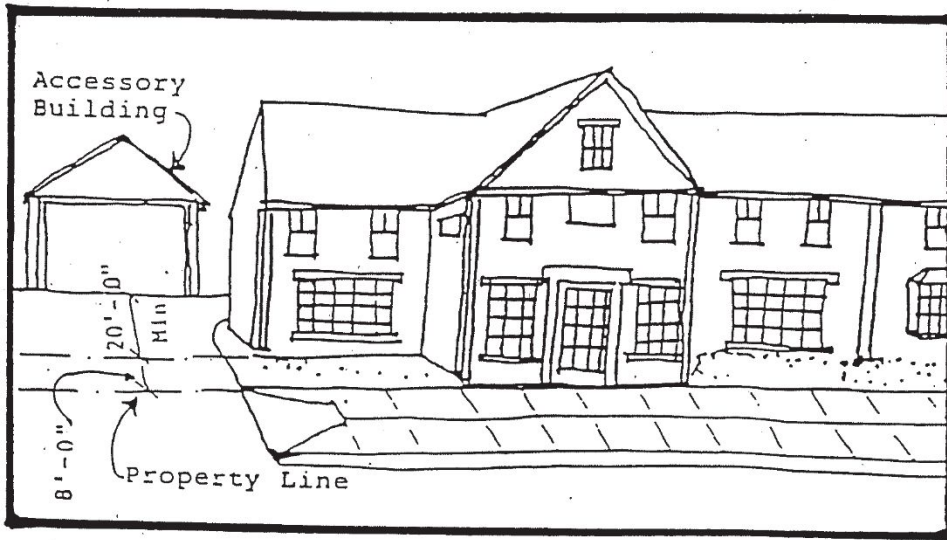
EXAMPLE C

ACCESSORY BUILDINGS



PLAN

Setback for Accessory Buildings and Uses shall be 20 feet or more.

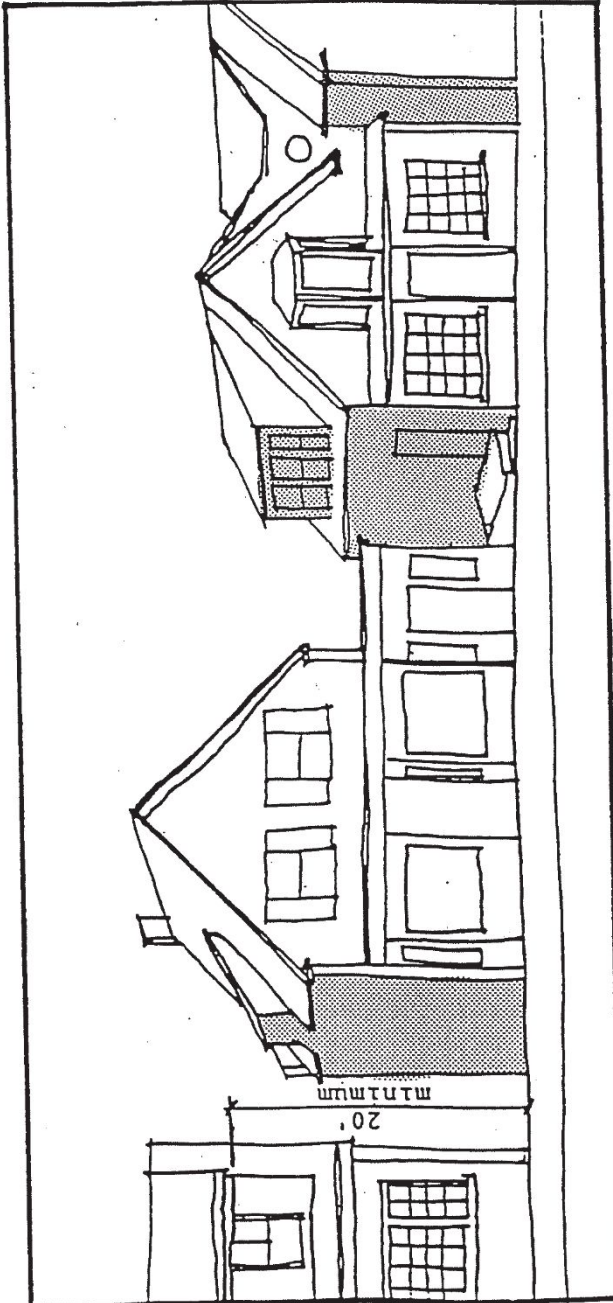


Elevational Sketch

EXAMPLE D

ZONING

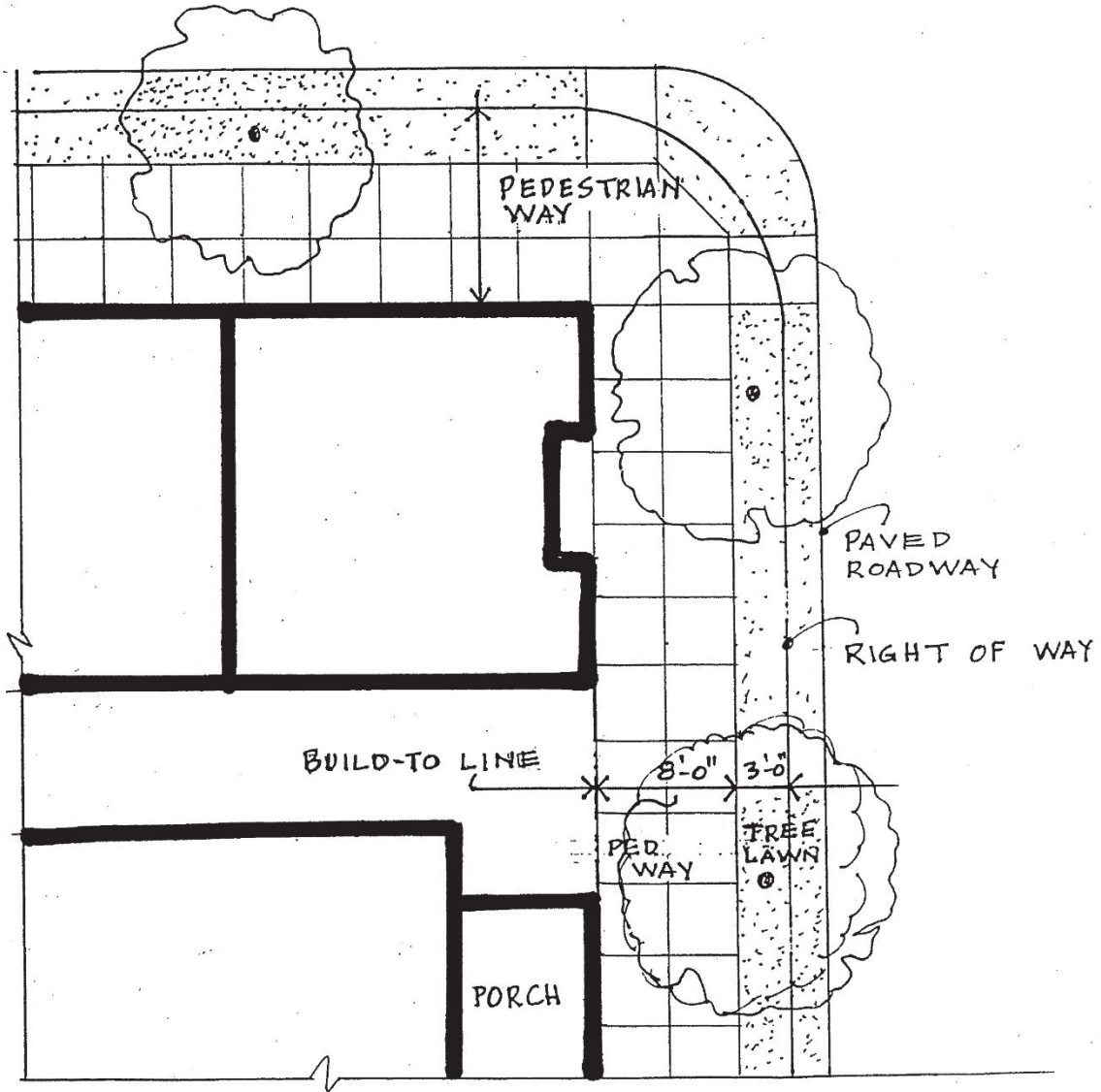
STREETSCAPE EXAMPLES



The facade shall also present at least twenty (20) feet of vertical building wall which may include dormers, parapet or false facade.

EXAMPLE E

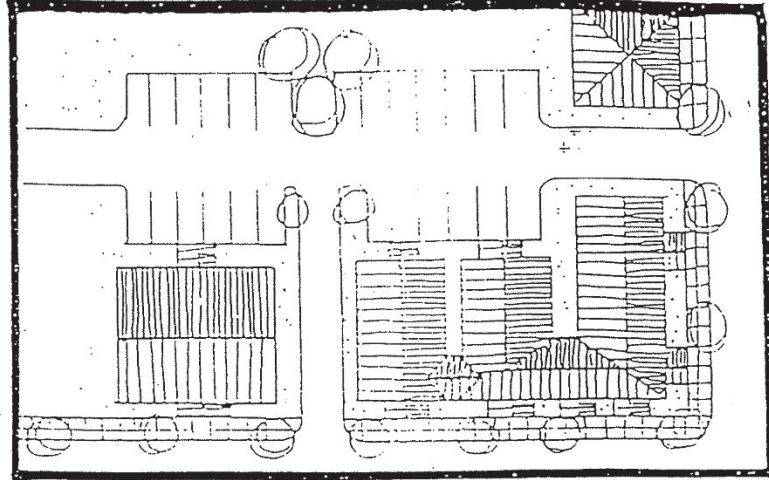
PEDESTRIAN WAYS/STREET TREES



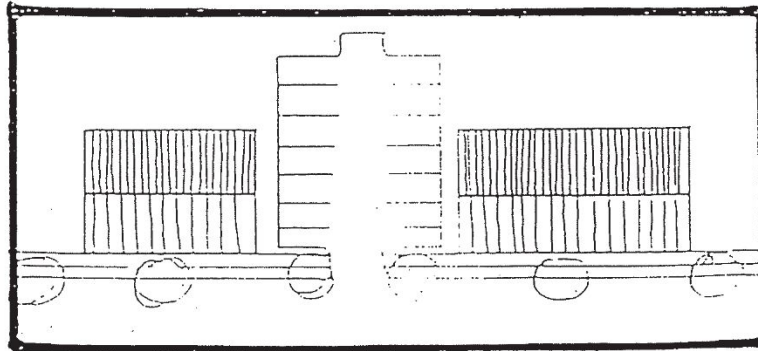
EXAMPLE F

ZONING

PARKING EXAMPLES



Linked Parking



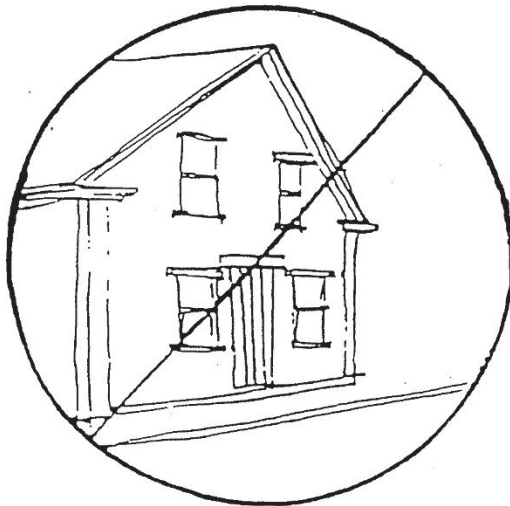
Shared Parking

EXAMPLE G

PEDESTRIAN ACCESS/VISUAL ACCESS



Minimum 70% of length of facade visually/
physically accessible with doors or windows.



EXAMPLE H


ZONING

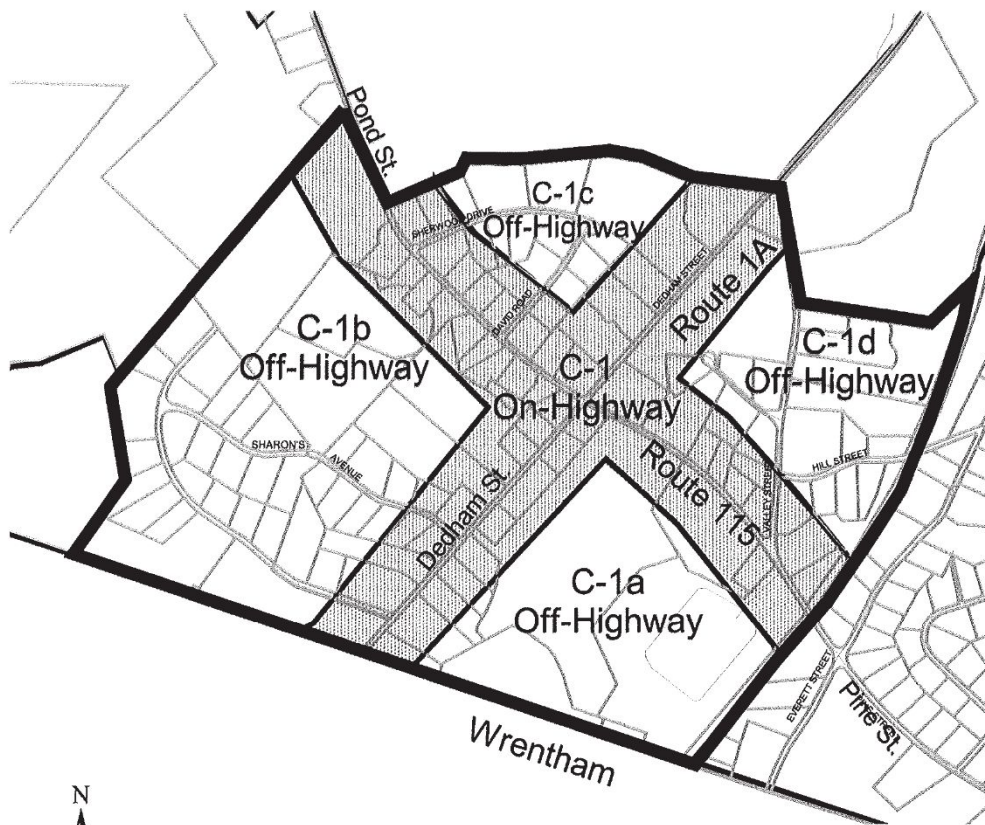
C-1 District (Route 1A/115)

On-Highway and
Off-Highway Sub-districts



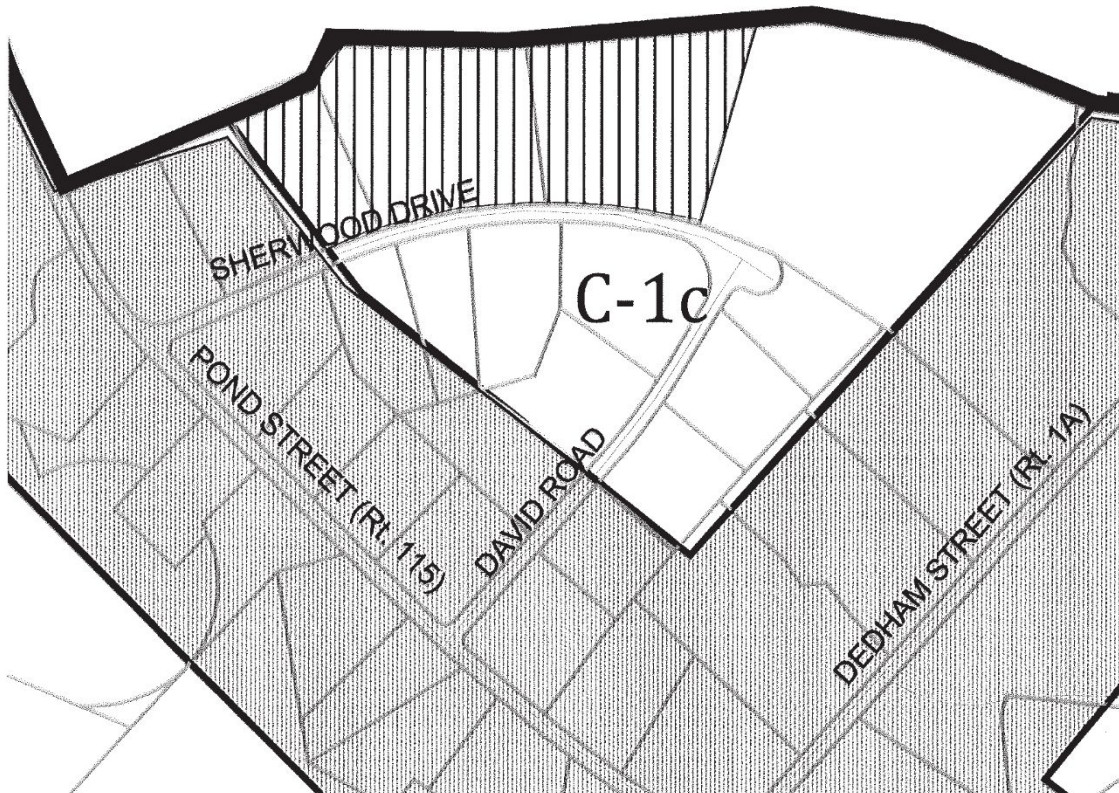
Locus

 On-Highway



Example I

Adult Business and Medical Marijuana Overlay District (C-1c Sub-district)



Adult Business and Medical Marijuana Overlay District

Example Ia