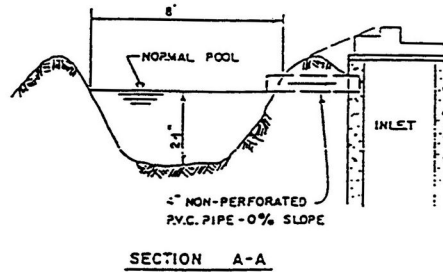
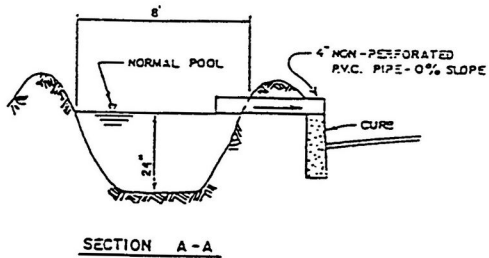
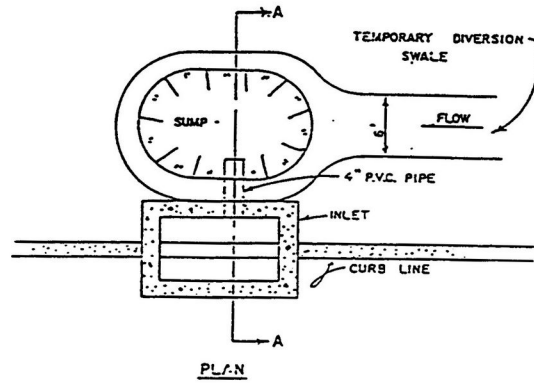
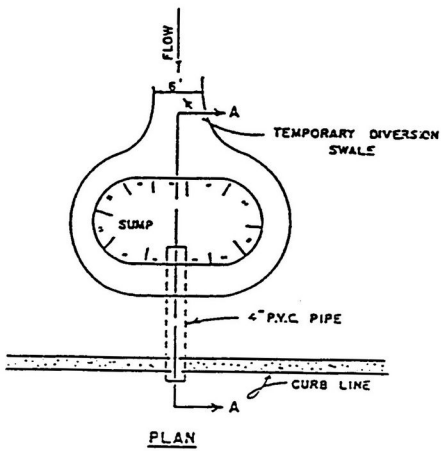


DEVELOPMENT REGULATIONS

102 Attachment 7

Township of Colts Neck

SOIL EROSION CONTROL
DETAILS



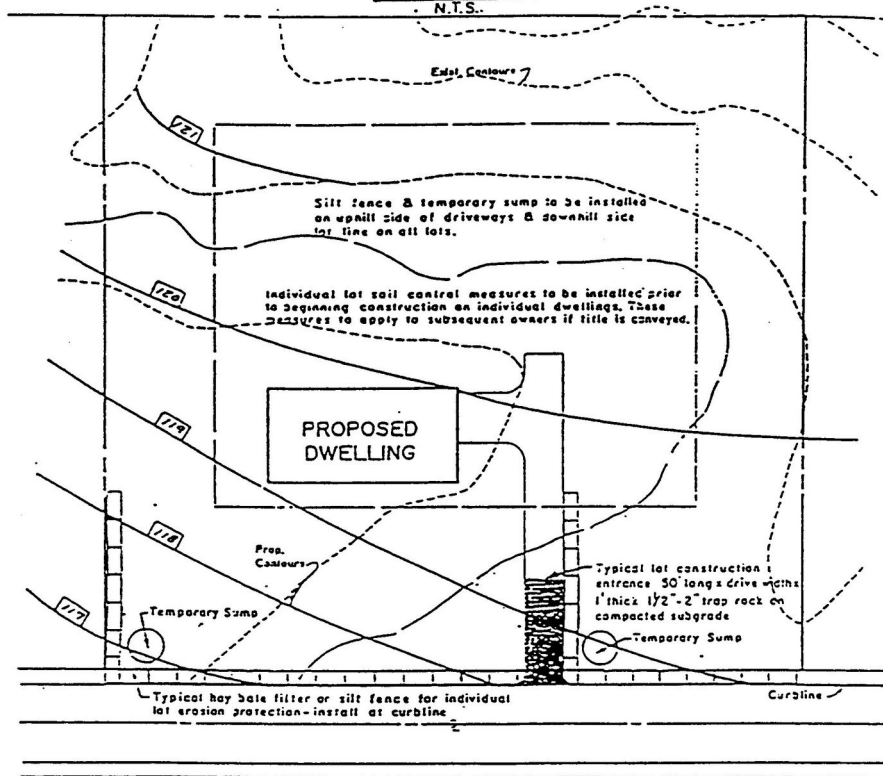
TEMPORARY SUMP DETAIL
NOT AT INLETS
N.T.S.

TEMPORARY SUMP DETAIL
AT INLETS
N.T.S.

NOTE:
PERIODIC CLEANING OF THE SUMP MUST BE PERFORMED IN
ORDER THAT A MINIMUM SUMP DEPTH OF 12" IS MAINTAINED.

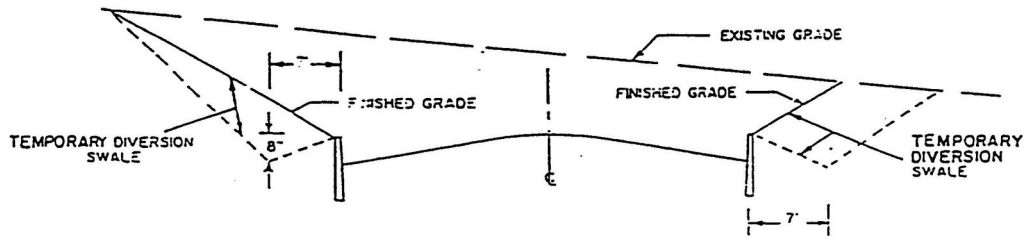
PLATE NO. I

**SOIL EROSION CONTROL
DETAILS**



**DETAIL
INDIVIDUAL LOT SOIL EROSION MEASURES (TYP.)**

N.T.S.



**DETAIL
TEMPORARY DIVERSION SWALE FOR ROADWAYS IN CUT**
(INSTALL WHEN SILT FENCE OR HAYBALES ARE NOT INSTALLED BEHIND CURB)

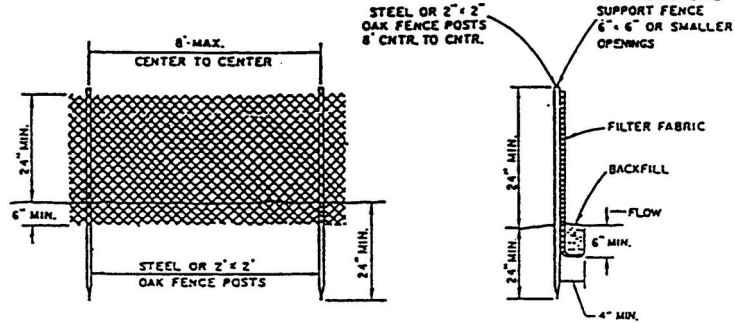
DEVELOPMENT REGULATIONS

SOIL EROSION CONTROL
DETAILS

N.T.S.

NOTE:

SYNTHETIC FILTER FABRIC SHALL BE FIRMLY ATTACHED TO UPHILL SIDE OF FENCE POSTS. OPEN AREA SHALL BE GREATER THAN 4% BUT LESS THAN 10% MEETING U.S. ARMY CORPS OF ENGINEERS SPEC. NO. CWO2215 FOR STRENGTH. FILTER FABRIC MUST BE TRENCHED IN 6" MINIMUM AS SHOWN.

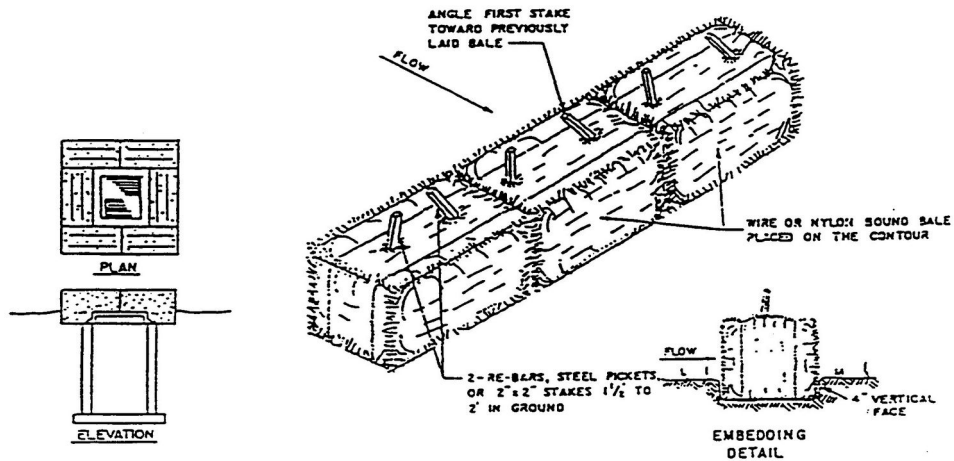


ELEVATION

SECTION

SILT FENCE

N.T.S.

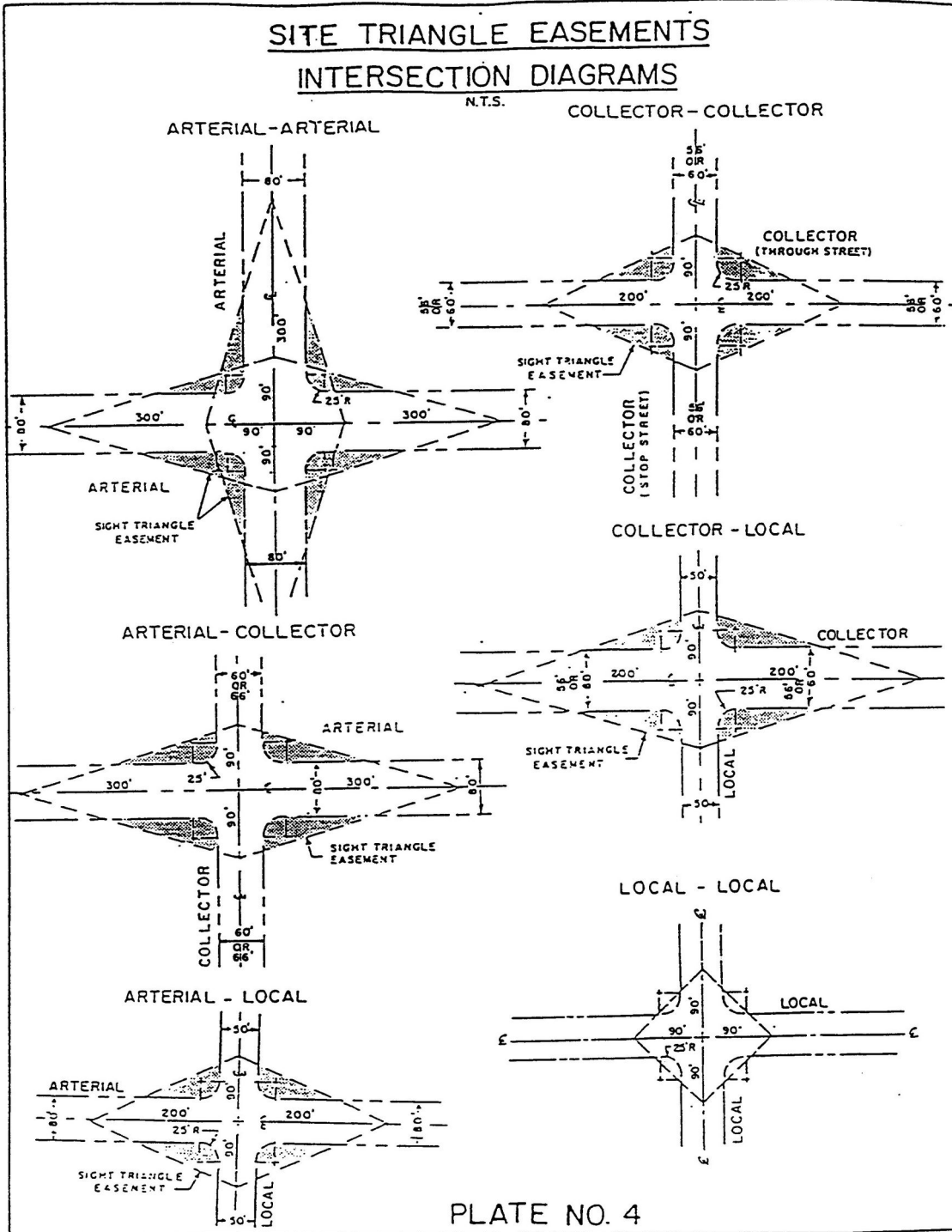


SEDIMENT BARRIER

N.T.S.

PLATE NO. 3

COLTS NECK CODE



DEVELOPMENT REGULATIONS

DETAIL
CUL-DE-SAC LAYOUT
N.T.S.

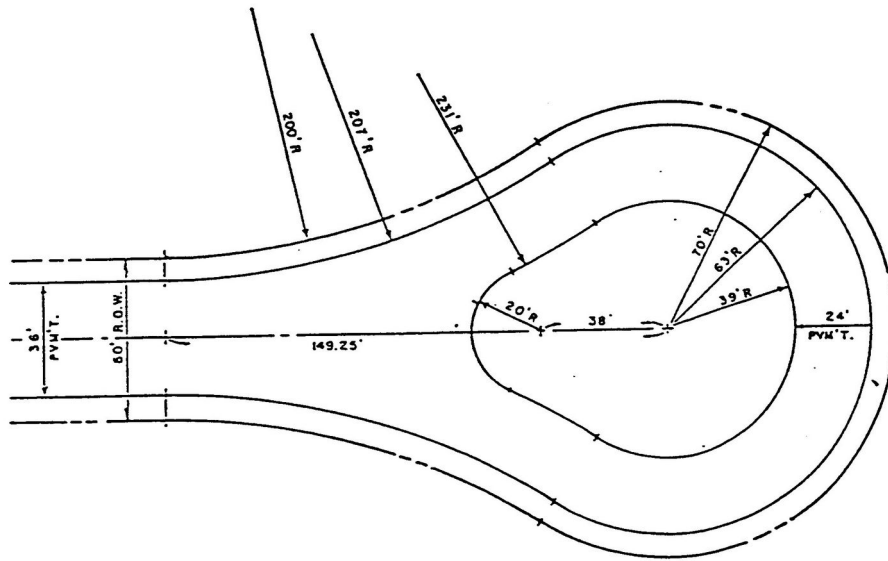
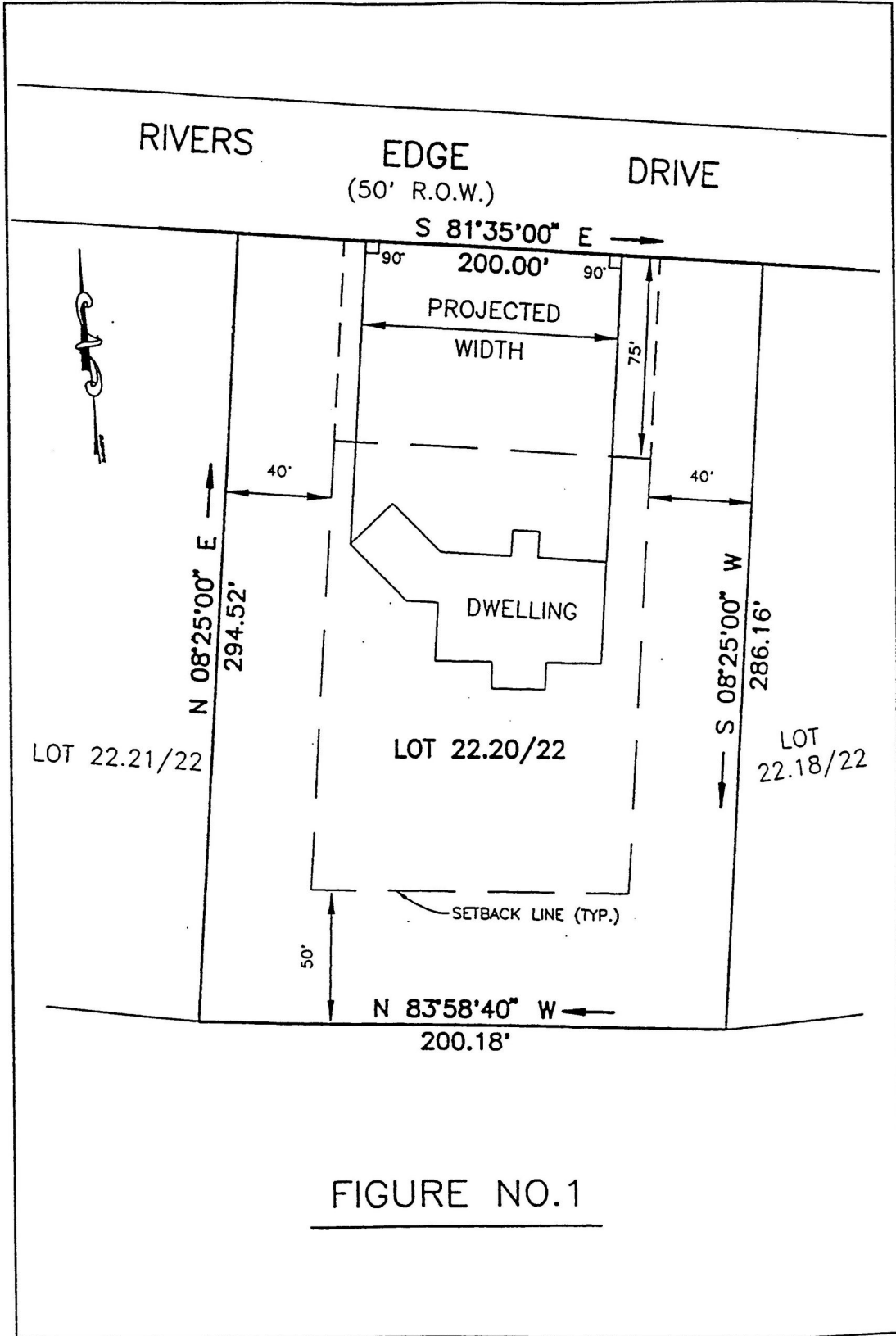


PLATE NO. 5

COLTS NECK CODE



DEVELOPMENT REGULATIONS

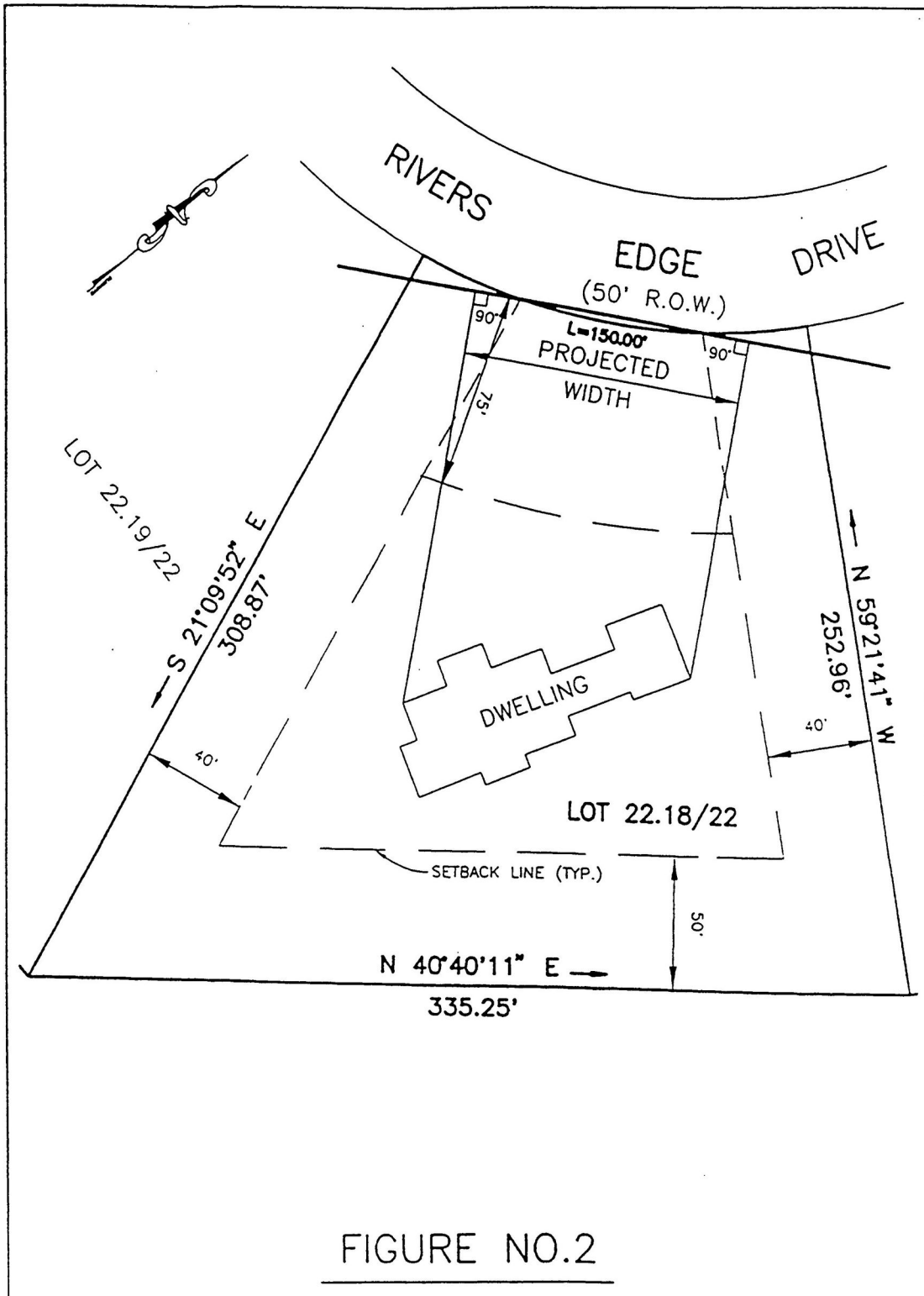


FIGURE NO.2

COLTS NECK CODE

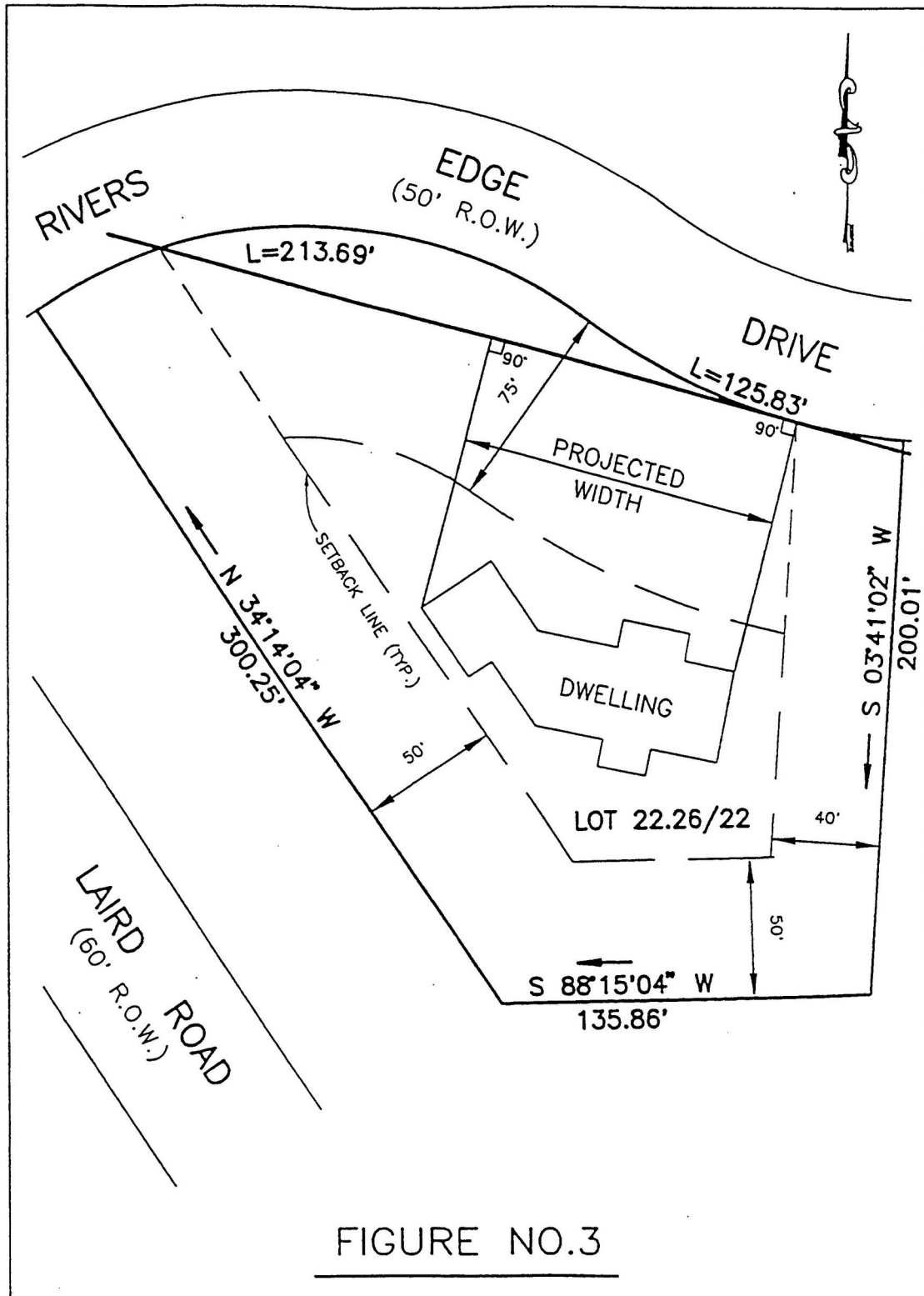


FIGURE NO.3

DEVELOPMENT REGULATIONS

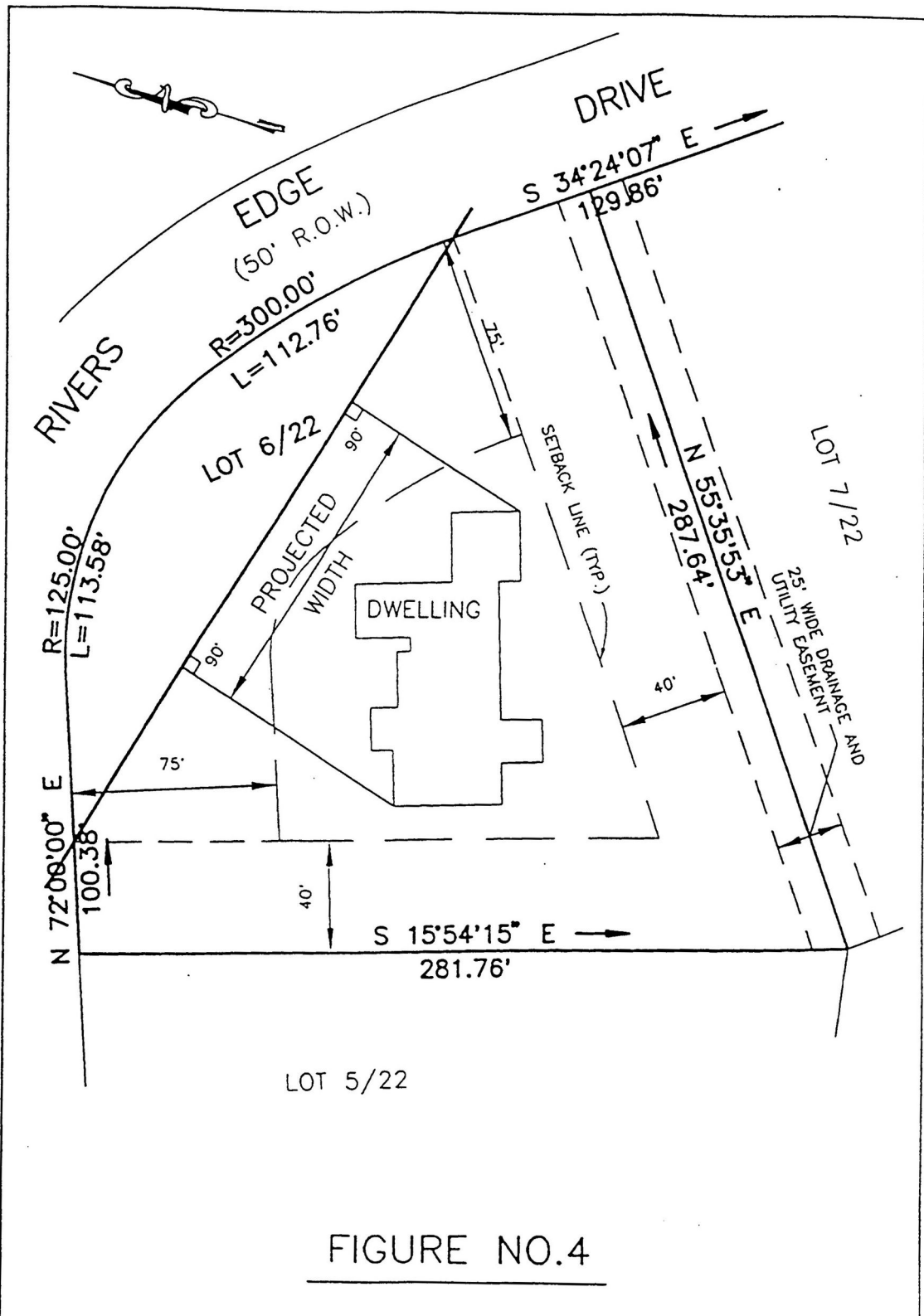


FIGURE NO.4

COLTS NECK CODE

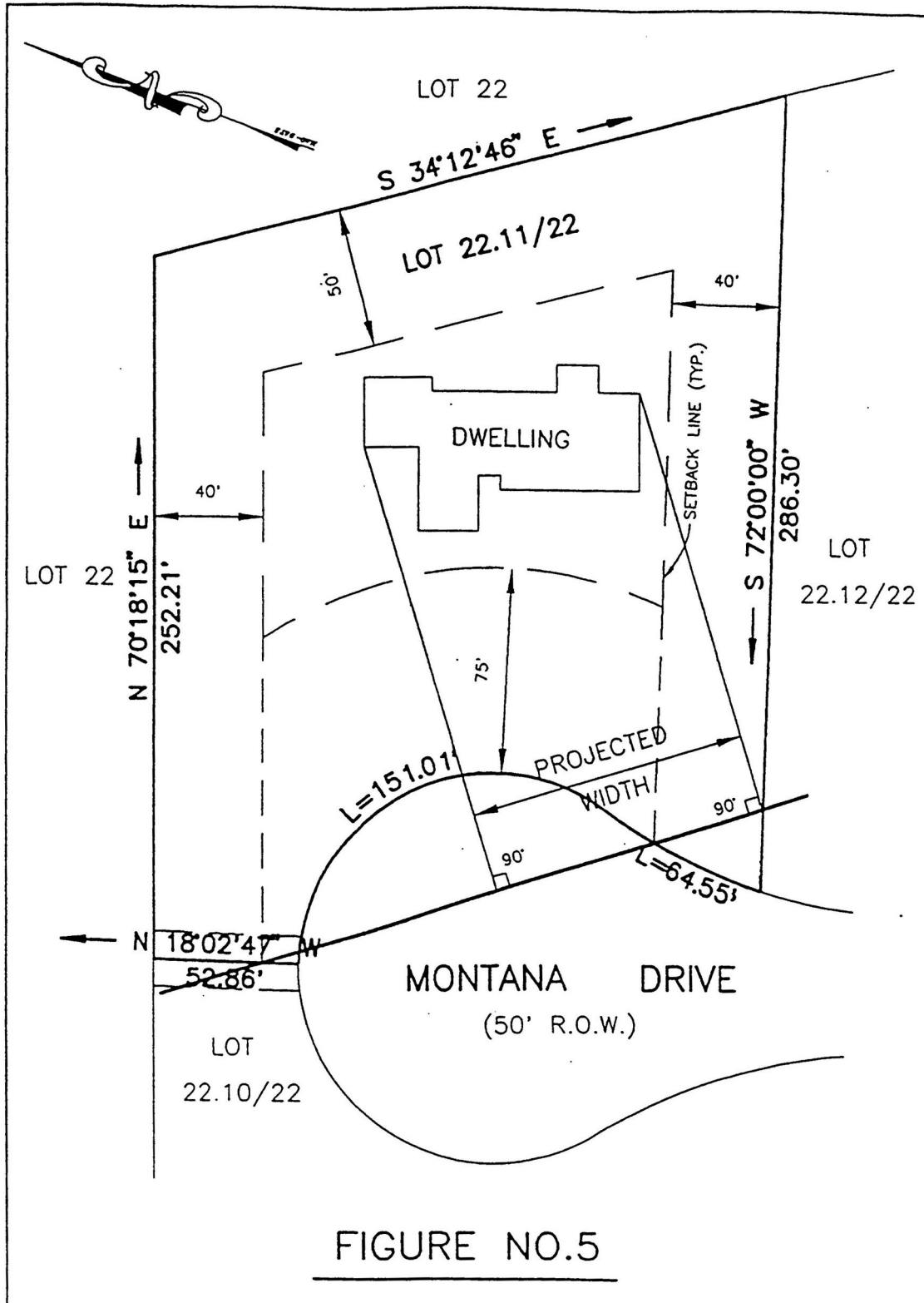


FIGURE NO.5