

ZONING

60 Attachment 7

Town of New Castle

Small Wireless Facility Design and Review Guideline Policy [Added 7-16-2019]

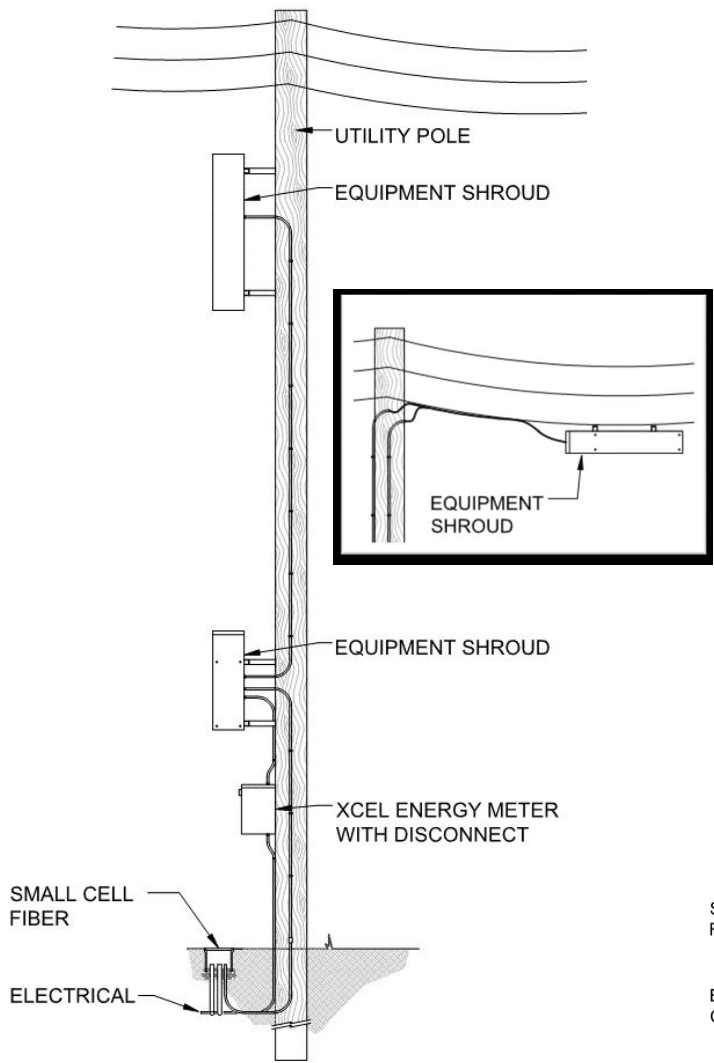
The Town of New Castle finds that in order to protect the public health, safety and welfare of its citizens and to reasonably manage and protect the public rights-of-way (the "ROW") and its uses in the Town, it is in the best interest of the Town and its residents and businesses to establish Small Wireless Facility Design and Review Guidelines (the "Guidelines") to provide the aesthetic requirements and other specifications and reasonable conditions that small wireless facilities installed within the Town (including ROW) must meet prior to installation and following installation.

The objective of these Guidelines is to strike a balance between preserving and protecting the character of the community through careful design, siting, and camouflaging techniques to blend these facilities into their surrounding environment and provide other reasonable conditions upon such placement and use of property within the Town and the ROW, while enhancing the ability of small wireless facilities carriers to deploy small wireless facilities in the Town effectively and efficiently so that residents, businesses, and visitors benefit from ubiquitous and robust wireless service availability.

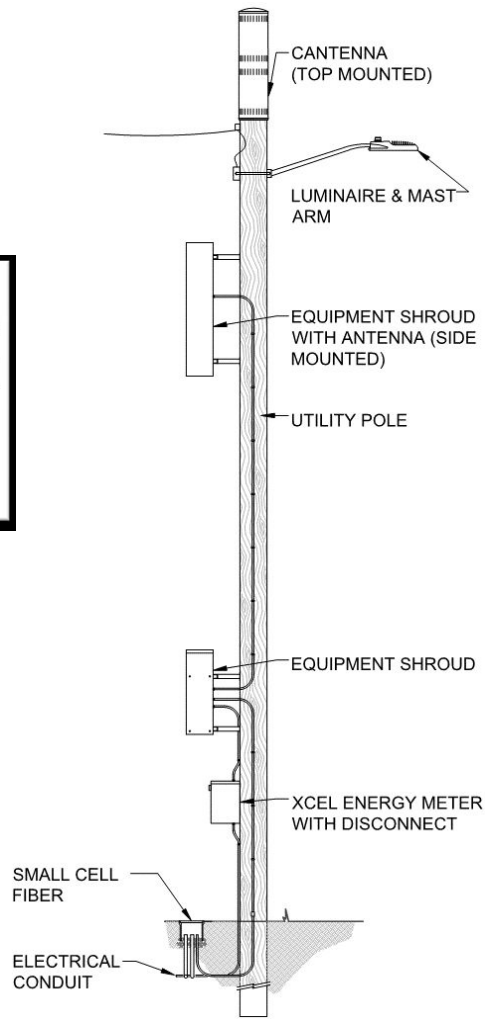
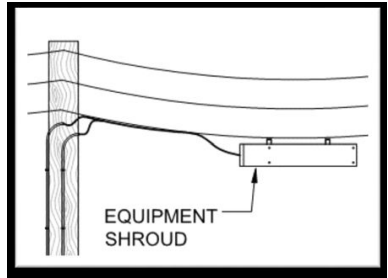
These Guidelines apply to requests to locate small wireless facilities throughout the Town and within the ROW, as well as ongoing use of the ROW for such purposes. These Guidelines are established pursuant to Chapter 60, §§ 60-210, and 60-410 of the Code of the Town of New Castle Concerning Wireless Telecommunications Facilities and applicable law. These Guidelines are administered through the permitting process for small wireless facilities, contained in § 60-4100.

While the Town fully intends to have small wireless facilities meet the guidelines established in this policy, there may be times when not every specific guideline may be met. In these cases, the Town will use these guidelines in the approval of small wireless permit applications.

Small Wireless Facility Components



General Utility Pole Layout¹



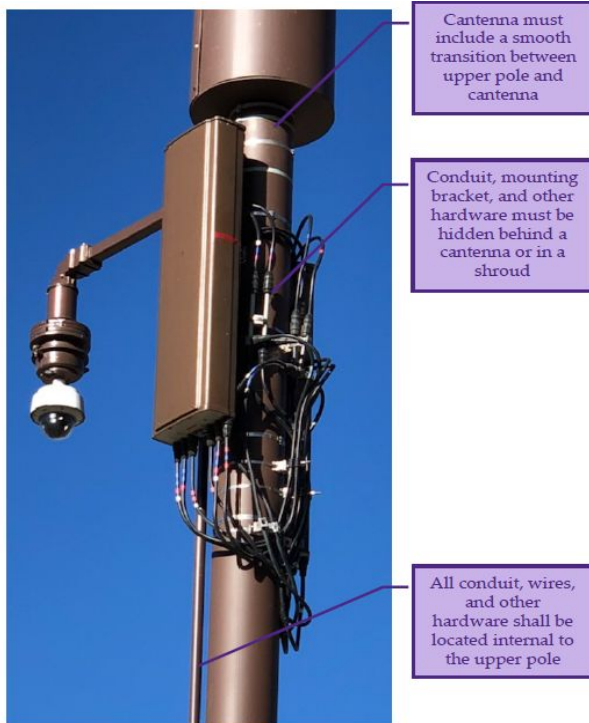
General Light Pole Layout²

¹ Courtesy of Denver Design Guidelines, 2018

² Courtesy of Denver Design Guidelines, 2018

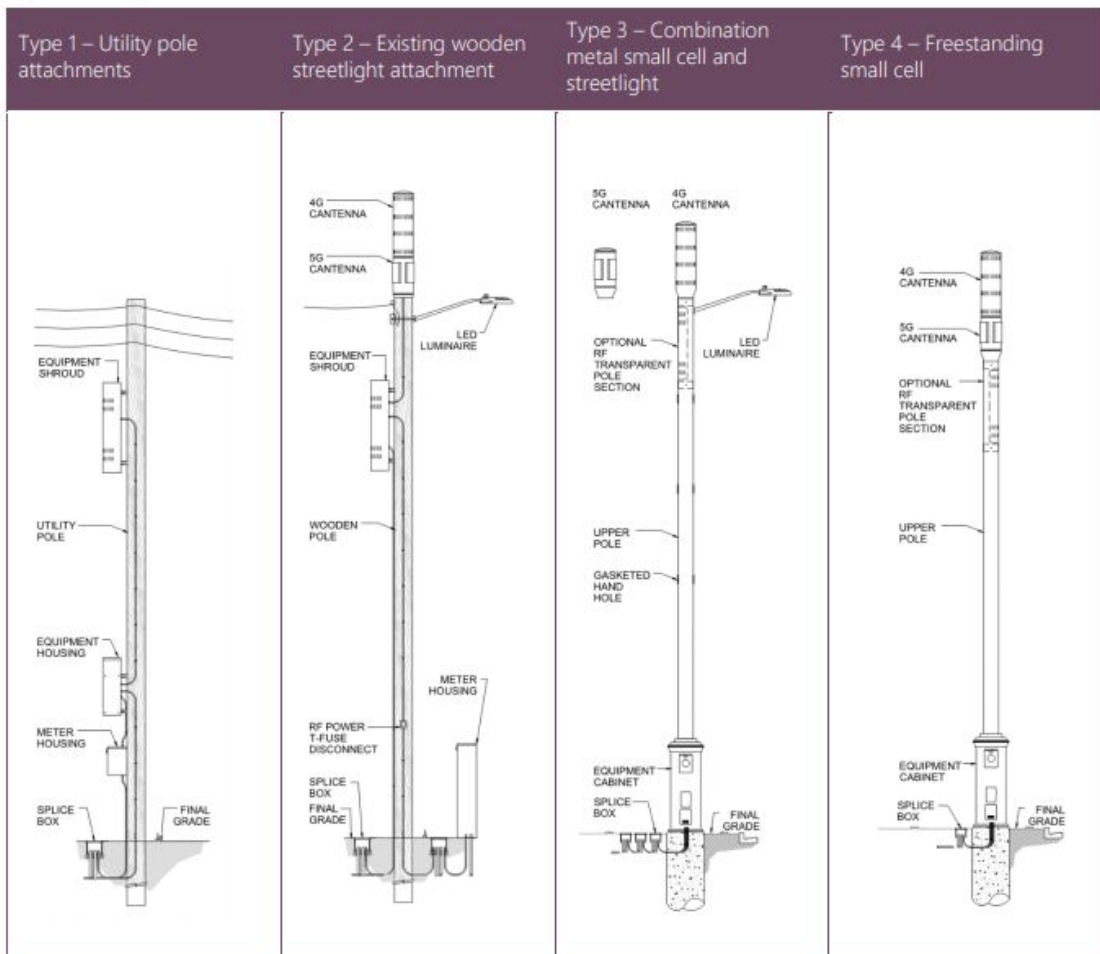
ZONING

Unacceptable Installations



NEW CASTLE CODE

Acceptable Installations



ZONING

AESTHETIC GUIDELINES

1. A small wireless facility shall utilize the smallest, least visually intrusive antennas, components, and other necessary equipment available at the time of installation.
2. Structures should be architecturally integrated into the environment and harmonize with the property on which it is proposed. Structures shall be the minimum height necessary.
3. Each small wireless facility antenna ("antenna") shall be located entirely within a shroud or canister type enclosure.
4. The diameter of the antenna or antenna enclosure should not exceed the diameter of the top of the wireless support structure pole, and to the maximum extent practical, should appear as a seamless vertical extension of the pole. In no case shall the maximum diameter of the shroud be wider than one and one half times the diameter of the top of the pole. Where maximum shroud diameter exceeds diameter of the top of the pole, the shroud shall be tapered to meet the top of the pole. The enclosure shall not exceed six cubic feet in volume.
5. Mounting Location. All antennas shall be mounted to the top of the wireless support structure pole, aligned with the centerline of the wireless support structure.
6. Tree "topping" or the improper pruning of trees is prohibited. Any proposed pruning or removal of trees, shrubs or other landscaping already existing (especially within the ROW) must be noted in the application and must be approved by the Town as part of the application.
7. All cables, wires and connectors related to the small wireless facility must be fully concealed on the wireless support structure and shall match the color of the wireless support structure. There shall be no external cables and wires related to the small wireless facility hanging off or otherwise exposed on the wireless support structure.

NEW CASTLE CODE

8. All colors shall match the background of any wireless support structure that the facilities are located upon. In the case of existing wood poles, finishes of conduit shall be zinc, aluminum or stainless steel, or colored to match those metal finishes and equipment cabinets shall be the color of brushed aluminum. Ground mounted equipment cabinets shall be the color of brushed aluminum.
9. Ground mounted equipment in the Town right-of-way is prohibited, unless the applicant can demonstrate that pole mounted or undergrounded equipment is technically infeasible. If ground mounted equipment is necessary, the equipment must be as far away from the roadway as possible (other than if impacting active use residential property) and should be fully concealed where practicable. Generators located in the rights-of-way are prohibited.
10. Replacement poles shall be located as near as possible to the existing pole with the requirement to remove the abandoned pole.
11. Equipment enclosures, including electric meters, shall be as small as possible. Ground-mounted equipment shall incorporate concealment elements into the proposed design matching color and materials of the wireless support structure unless other materials or colors are identified by the Town. Concealment may include, but shall not be limited to, landscaping, strategic placement in less obtrusive locations and placement within existing or replacement street furniture.
12. Radio equipment shall be fully enclosed within an equipment cabinet or concealed within the antenna shroud enclosure matching color and materials of the wireless support structure unless other materials or colors are approved by the Town.
13. Landscape screening should be provided and maintained around exterior equipment enclosures unless otherwise approved by the Town. The planting quantity and size should be such that 100% screening is achieved within two years of installation.

ZONING

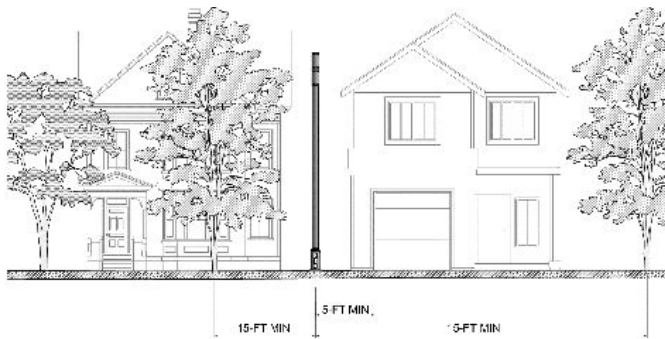
14. Signage: The small wireless facility operator/permittee shall post its name, location identifying information, and emergency telephone number in an area on the cabinet of the small wireless facility that is visible to the public. Signage required under this section shall not exceed 4 inches x 6 inches, unless otherwise required by law (e.g. RF ground notification signs) or the Town. If no cabinet exists, the signage shall be placed at the base of the pole.
15. Lights: New small wireless facilities and wireless support structures shall not be illuminated, except in accord with state or federal regulations, or unless illumination is integral to the camouflaging strategy such as design intended to look like a street light pole.
16. Logos/Decals: The small wireless facility operator/permittee shall remove or paint over unnecessary equipment manufacturer decals. The color shall match or shall be as approved by the Town. Small wireless facilities and wireless support structures shall not include advertisements and may only display information required by a federal, state or local agency. The small wireless facility operator/permittee shall utilize the smallest and lowest visibility radio-frequency (RF) warning sticker required by government or electric utility regulations. Placement of the RF sticker shall be as close to the antenna as possible.
17. Cooling Fans: In residential areas, the small wireless facility operator/permittee shall use a passive cooling system. In the event that a fan is needed, the small wireless facility operator/permittee shall use a cooling fan with a low noise profile.

LOCATION GUIDELINES

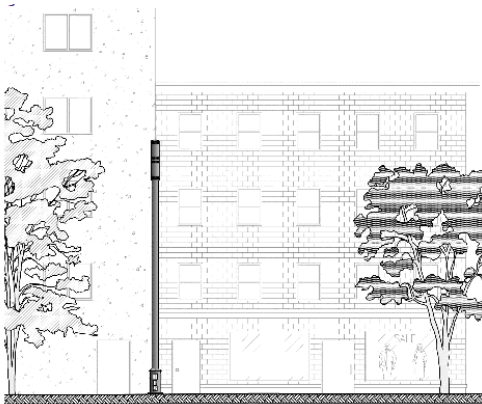
18. It is the Town's strong preference that whenever an applicant proposes to place a new small wireless facility that the applicant collocate the same on existing wireless support structures as long as the overall aesthetic is not compromised as determined by the Town of New Castle.
19. Most Preferable Locations: The following are the most preferred areas for new small wireless facilities in the order of preference (1 being most preferable):
 1. Industrial Districts if not adjacent to a park, residential district or historic or landmark designation.
 2. Highway Rights of Way areas if not adjacent to a park, residential district or historic or landmark designation.
 3. Retail and Commercial uses if not adjacent to a park, residential district or historic or landmark designation.
20. Consideration of Alternative Locations: The Town reserves the right to propose an alternate location for a small wireless facility and/or wireless support structure to the one proposed in the application which the operator shall use if it has the right to use the alternate location on reasonable terms and conditions and the alternate location does not impose technical limits.
21. Small Wireless Facilities shall be located:
 - a. In a manner that does not impede, obstruct, or hinder usual public pedestrian or vehicular travel or public safety on a ROW.
 - b. In a manner that does not obstruct the legal use of a ROW by a utility provider.
 - c. In a manner that does not violate the federal Americans with Disabilities Act.
 - d. In a manner that does not negatively impact the structural integrity of the associated wireless support structure.
 - e. In alignment with existing trees, utility poles, and streetlights.

ZONING

- f. Equal distance between trees when possible, with a minimum of 15 feet separation such that no proposed disturbance shall occur within the critical root zone of any tree.
- g. With appropriate clearance from existing utilities.
- h. So as not to be located along the frontage of a Historic building, deemed historic on a federal, state, or local level.
- i. Not within sight triangles at street intersections.



Example of Acceptable Location between Residential Homes



Example of Acceptable Location between Commercial Buildings