

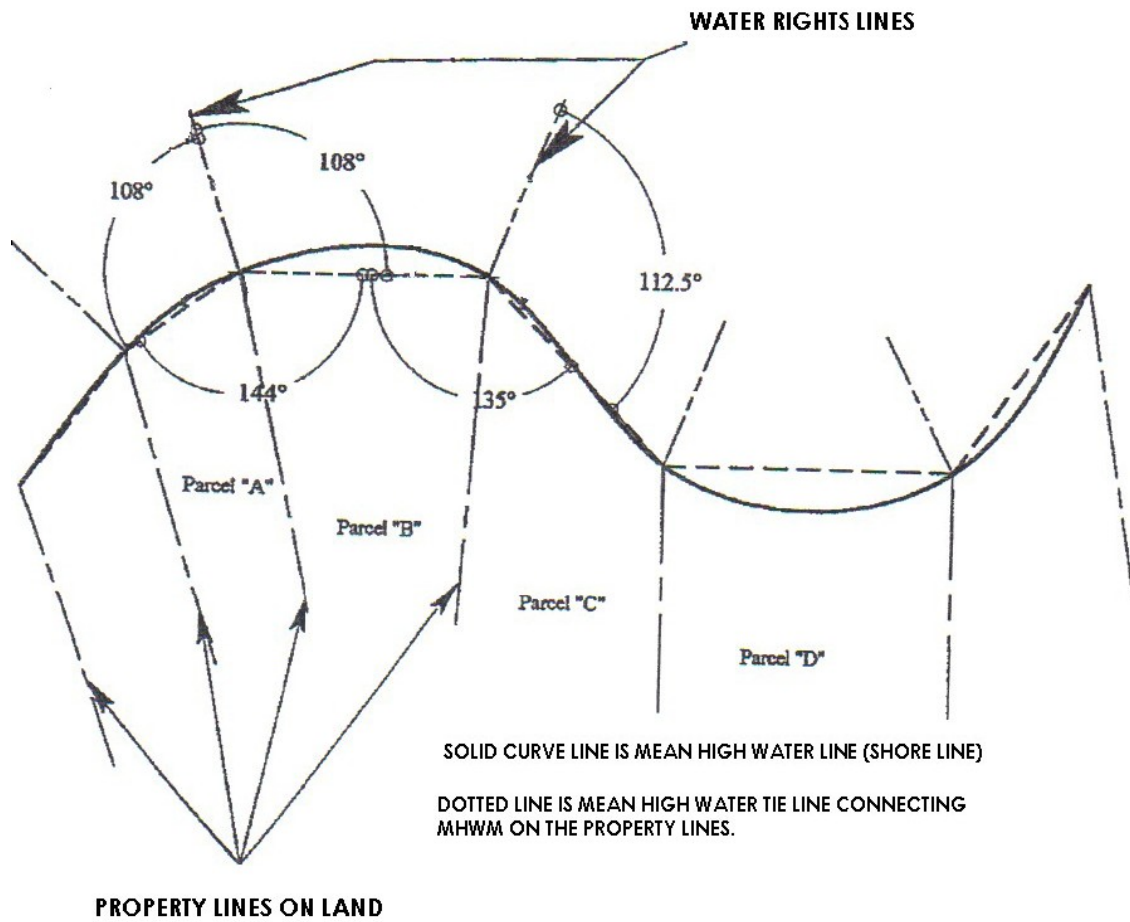
ZONING

150 Attachment 2

**Delineating Water Rights Lines
for Town of Livonia - Conesus Lake**

DIAGRAM #1

**DELINEATING WATER RIGHTS LINES FOR
TOWN OF LIVONIA - CONESUS LAKE**



LIVONIA TOWN CODE

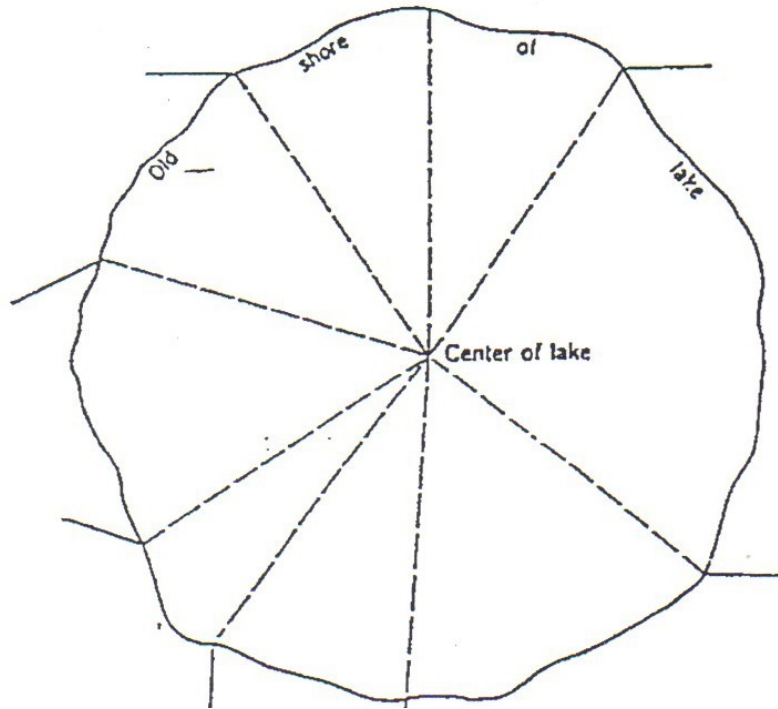
DIAGRAM 2 TOWN OF LIVONIA
CONESUS LAKE
ROUND LAKE (PIE) METHOD

Where Water Rights Lines are less than 200 feet long at the point of intersection with each other, the method described in Section 150-154, Paragraph A(1-4) must be modified to provide that all Water Rights Lines are at least 200 feet long at the point of intersection.

Lakeshore Parcels located in lake recesses or coves, or at the head or foot of the lake, will use the Round Lake Method (also known as Pie Method) to adjust Water Rights Lines.

When Lakeshore parcels are located at the head or foot of the lake, the radius point shall be located on the center thread of the lake, at a distance from the lakeshore equal to the radius of a circle most closely circumscribing the lakeshore, provided that the adjusted Water Rights Lines extend to at least 200 feet.

When Lakeshore Parcels are located in lake recesses or coves, the radius point shall be located at an approximate distance from the lakeshore equal to the radius of a circle most closely circumscribing the approximate lakeshore, provided that the adjusted Water Rights Lines extend to at least 200 feet.



ZONING

DIAGRAM 3 **TOWN OF LIVONIA**
CONESUS LAKE
LONG LAKE METHOD

Where Water Rights Lines are less than 200 feet long at the point of intersection with each other, the method described in Section 150-154 Paragraph A(1-4) must be modified to provide that Water Rights Lines are 200 feet long at the point of intersection.

The Long Lake Method is not used in this regulation to determine Water Rights Lines. In Rare and Unusual circumstances, the Long Lake Method may be used to ADJUST Water Rights Lines so they extend to 200 feet at the point of intersection. In the Long Lake Method, a line perpendicular to the center thread line of the lake is drawn to the High Water Mark on the Lakeshore Parcel lot line (the same initial point of the Water Rights Line). The Water Rights Line is then adjusted toward the perpendicular line until the Water Rights Line extends to 200 feet in length at the point of intersection.

