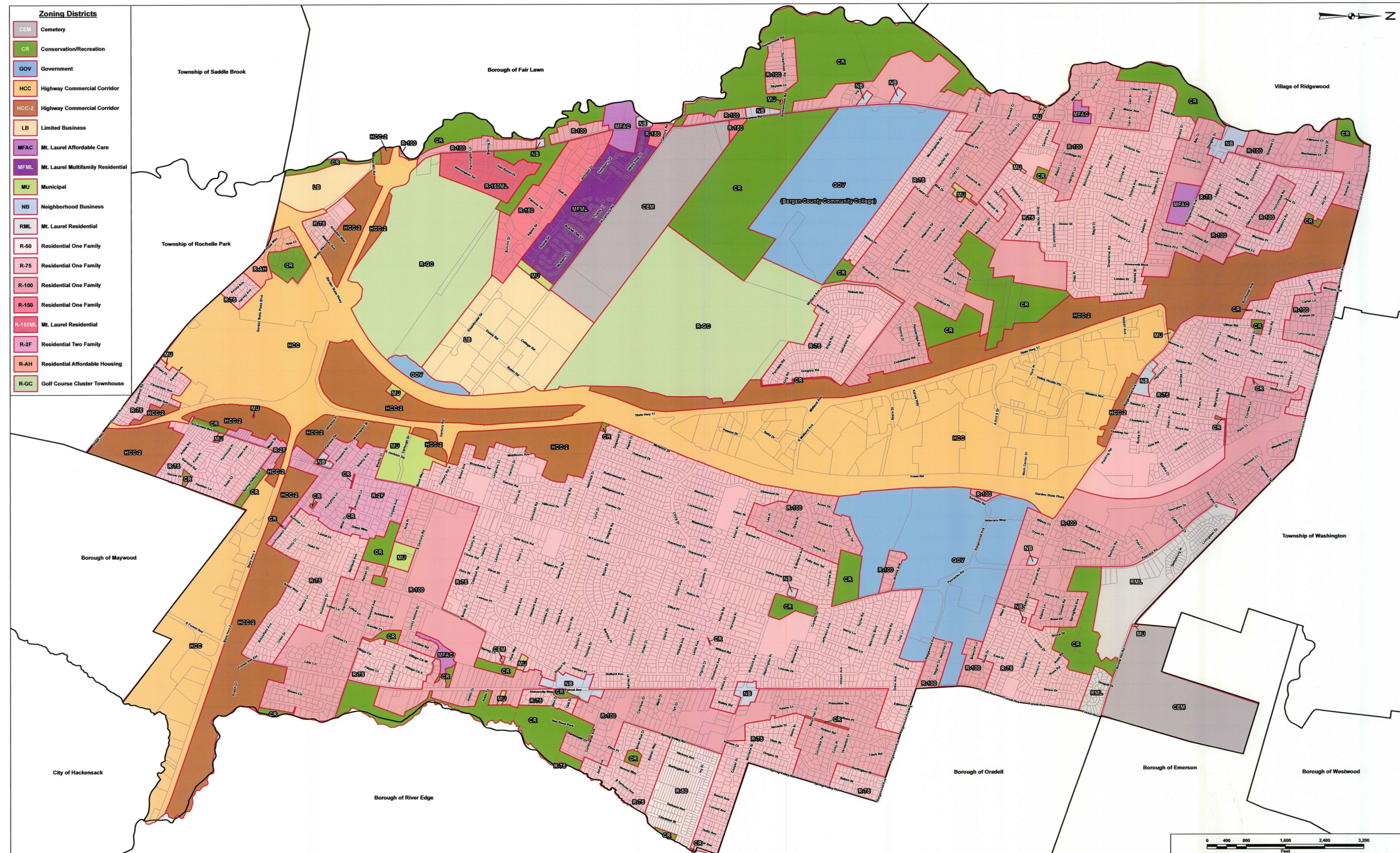


ZONING  
429 Attachment 2



NO.	DATE	DESCRIPTION	SURVEYED BY	DRAWN BY	DESIGNED BY	CHECKED BY

**BOSWELL McCLAVE ENGINEERING**  
 ENGINEERS - SURVEYORS - PLANNERS - SCIENTISTS  
 330 PHILLIPS AVENUE, SOUTH HACKENSACK, N.J. 07606  
 TEL: (201) 641-0770 • FAX: (201) 641-1831

**STEPHEN T. BOSWELL**  
*Stephen T. Boswell*  
 PROFESSIONAL ENGINEER N.J. LIC. 34680

**PETER C. TEN KATE**  
*Peter C. Ten Kate*  
 PROFESSIONAL ENGINEER N.J. LIC. 23741

**ZONING MAP**  
 BERGEN COUNTY BOROUGH OF PARAMUS NEW JERSEY

SURVEYED BY: JMW	DESIGNED BY: PTK	SCALE: 1" = 800'	JOB NO. PA-2495	DATE: 11/1/2016
------------------	------------------	------------------	-----------------	-----------------

FILE: PA-2495-ZONING SHEET 1 OF 1