

ZONING ORDINANCE

1303 Attachment 1

City of Erie
Illustrations

TYPICAL PLOT PLAN

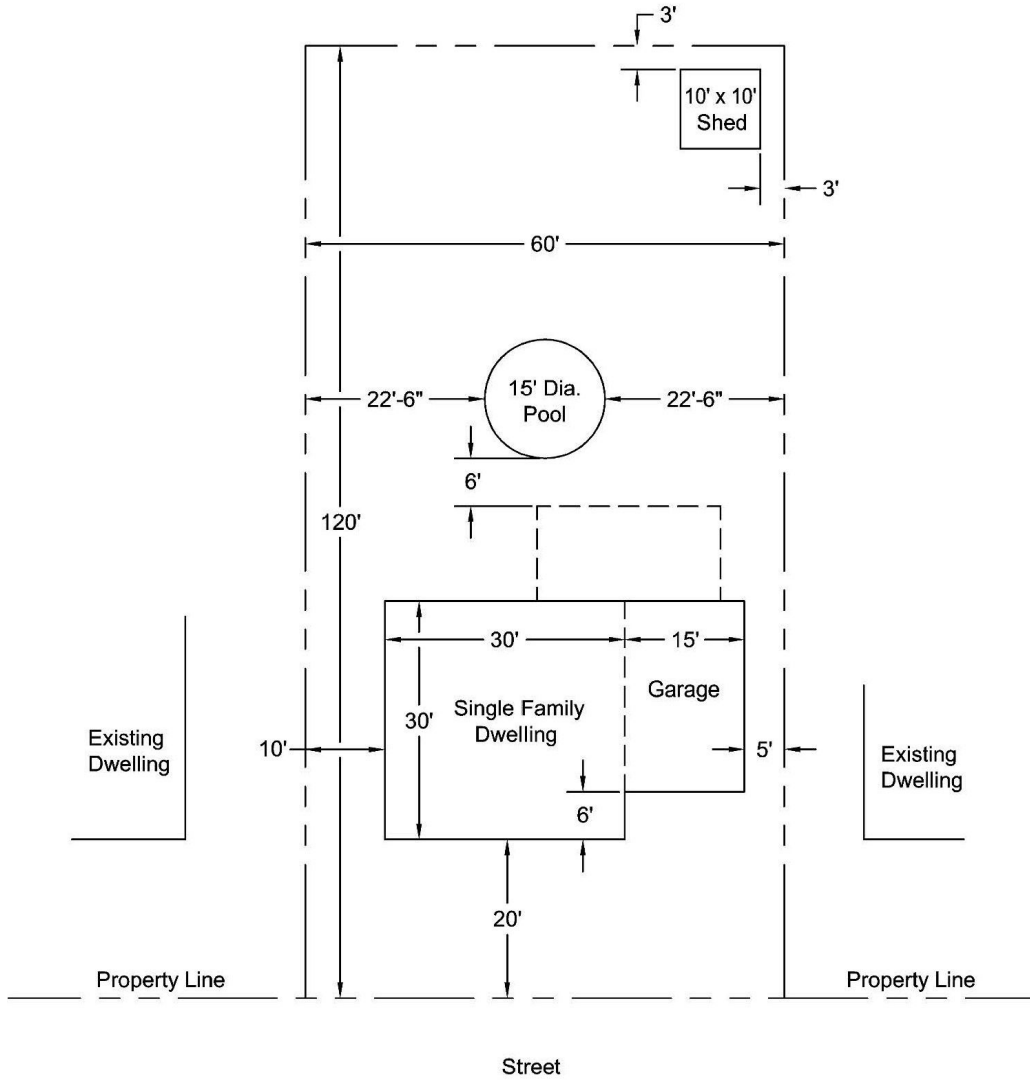


Illustration No. 1

TYPICAL PARKING LOT LAYOUT

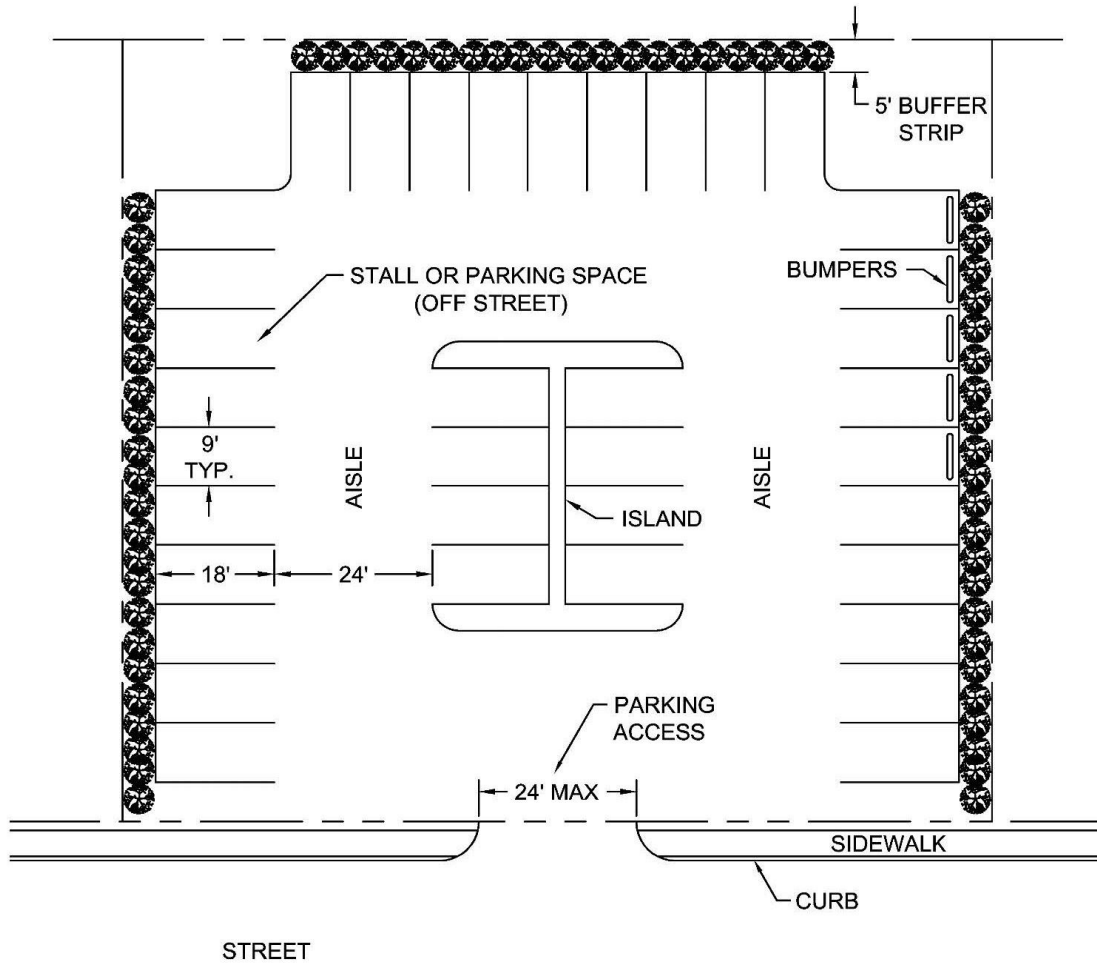
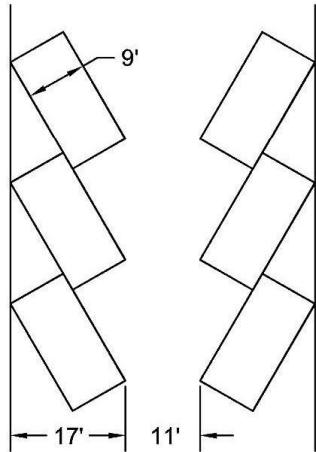


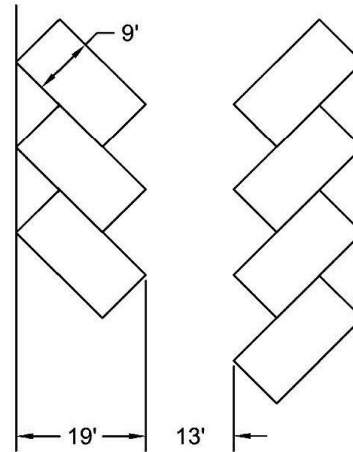
Illustration No. 2

ZONING ORDINANCE

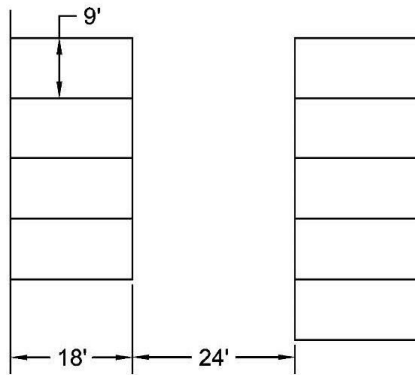
Parking Area Dimensions TYPICAL PARKING LOT DESIGNS



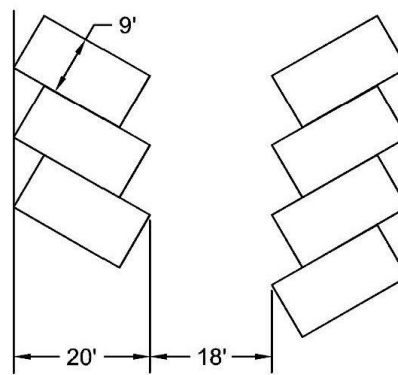
30 Degree Parking



45 Degree Parking



Perpendicular
90 Degree Parking



60 Degree Parking

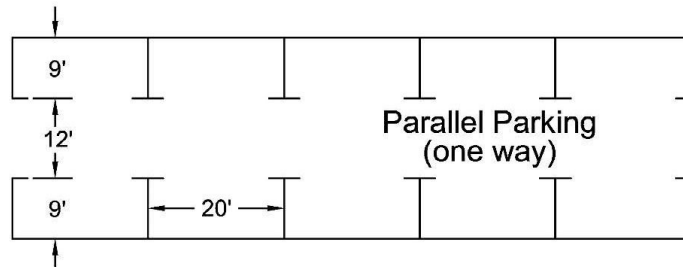


Illustration No. 3

HEIGHT OF BUILDINGS

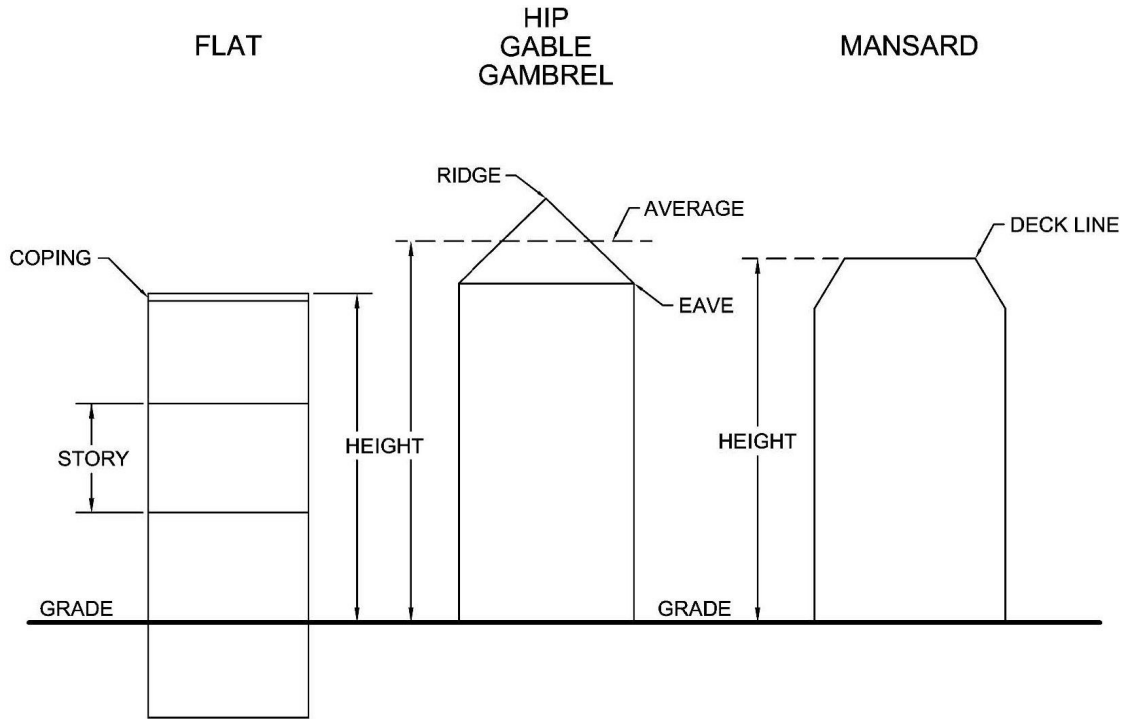
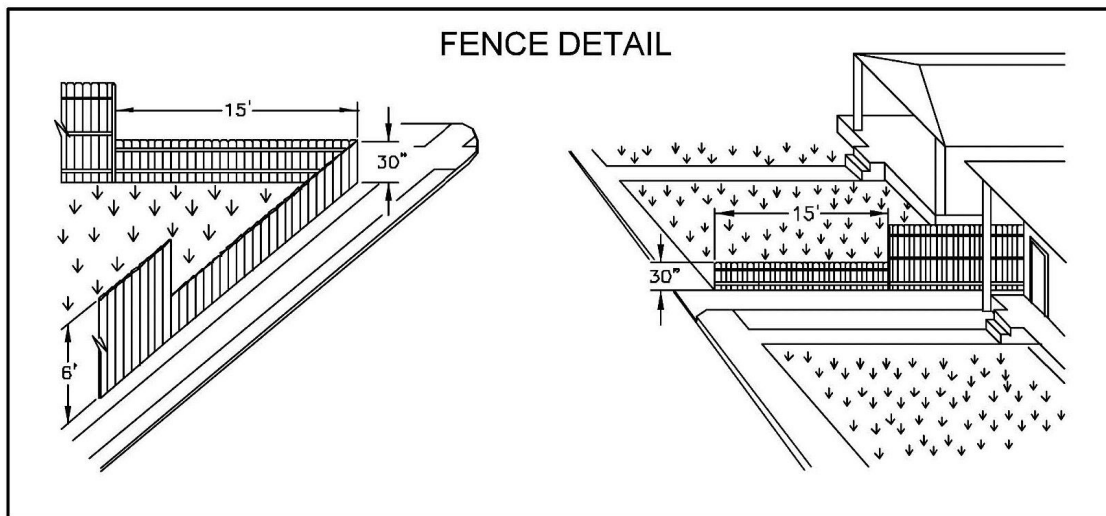


Illustration No. 4

ZONING ORDINANCE



- A fence, hedge or enclosure may be placed **up to but not exceed** the property line.
- No fence, hedge or enclosure shall exceed a height of six feet six inches (6'6") in a Residential District or eight feet six inches (8'6") in any non-residential district.
- Any fence, hedge or enclosure that is not of a "see-through" nature and obstructs vision must be reduced to a maximum of thirty inches (30") as shown above.

NOTE: It is the responsibility of the property owner to know the location of property lines prior to the installation of a fence. The front property line is not always the inside edge of the sidewalk.

Illustration No. 5