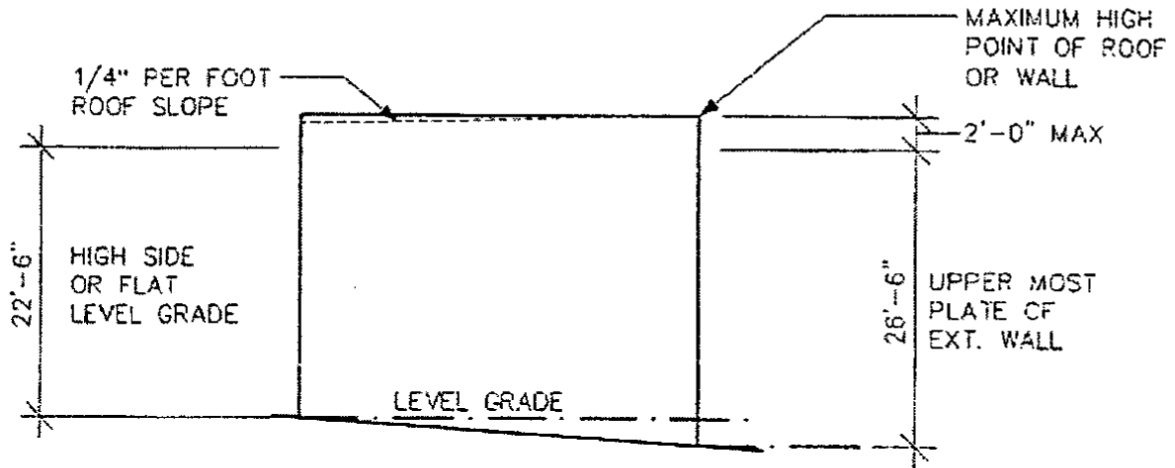


LAND DEVELOPMENT

240 Attachment 2

Borough of Oradell

Building Height
Diagram A



LOW SLOPE AND FLAT ROOFS
FRONT OR SIDE PROPERTY LINES

Residential structures with flat roofs with roof pitches not exceeding 1/4 per foot rise shall not exceed the dimensions shown in Diagram A.

Heights measurements shall conform to definition of height as set forth in the Oradell Zoning Code § 240-2.2, Definitions.

Date: 9-4-2012