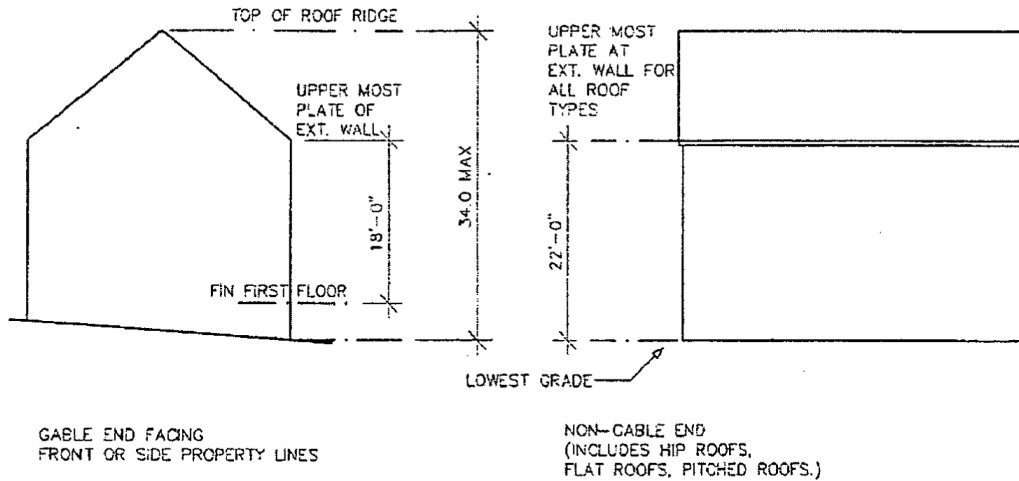


LAND DEVELOPMENT

240 Attachment 3

**Borough of Oradell**

**Building Height  
Diagram B**



Residential structures with a pitched roof shall not exceed the dimensions shown in Diagram B.

Within attics above a second floor, dormers and similar architectural enhancements (such as eyebrow windows) are allowed. The total square foot area of the facing surface (front) of all dormers or similar enhancement may not exceed 15% of the roof area in which it sits. Dormers within the attic above a second floor may not exceed 7' 6" in width.

A calculation of such amenities must be included within plans submitted for review for any municipal board application or permit application.

Heights measurements shall conform to definition of height as set forth in the Oradell Zoning Code § 240-2.2, Definitions.

Date: 9-4-2012