

ZONING

420 Attachment 1

Borough of Green Tree

Appendix A – Figures

Figure 1

Buildable Area, Building Setback, Building Line

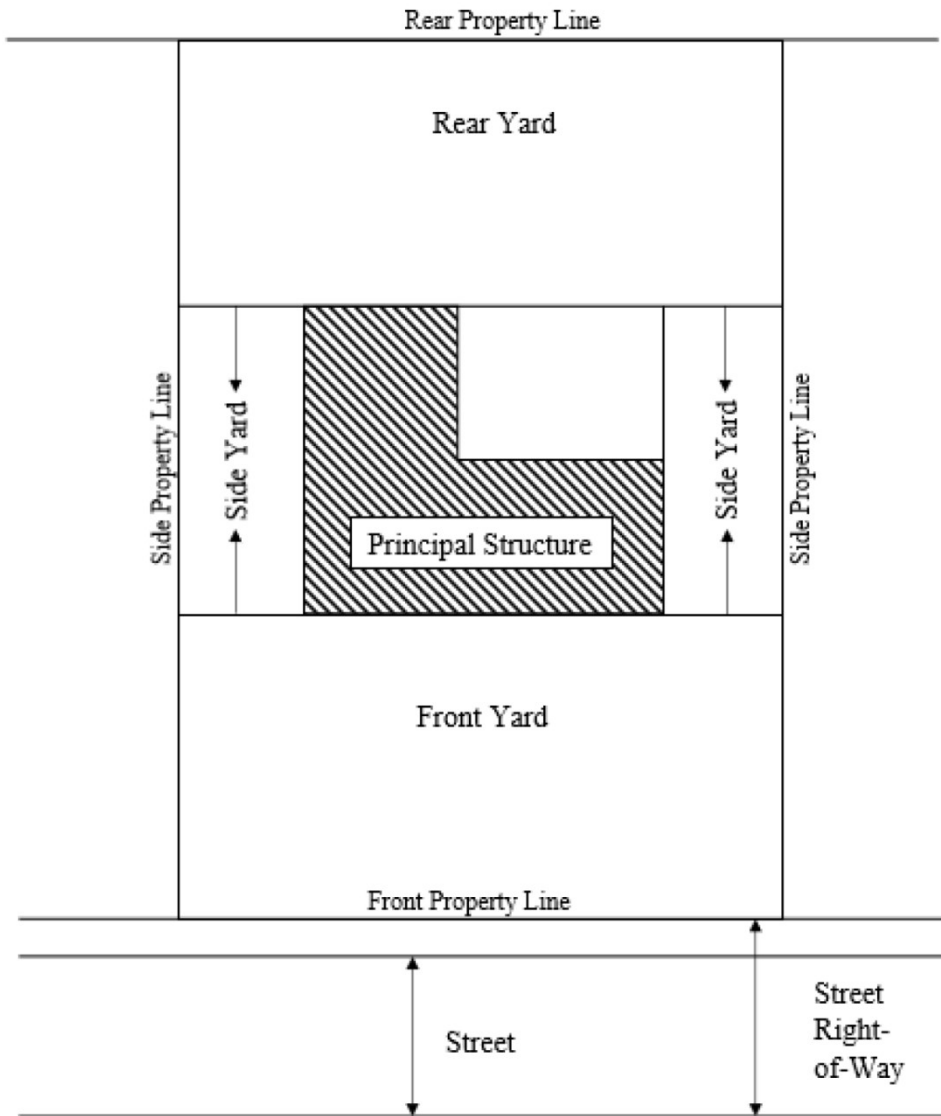
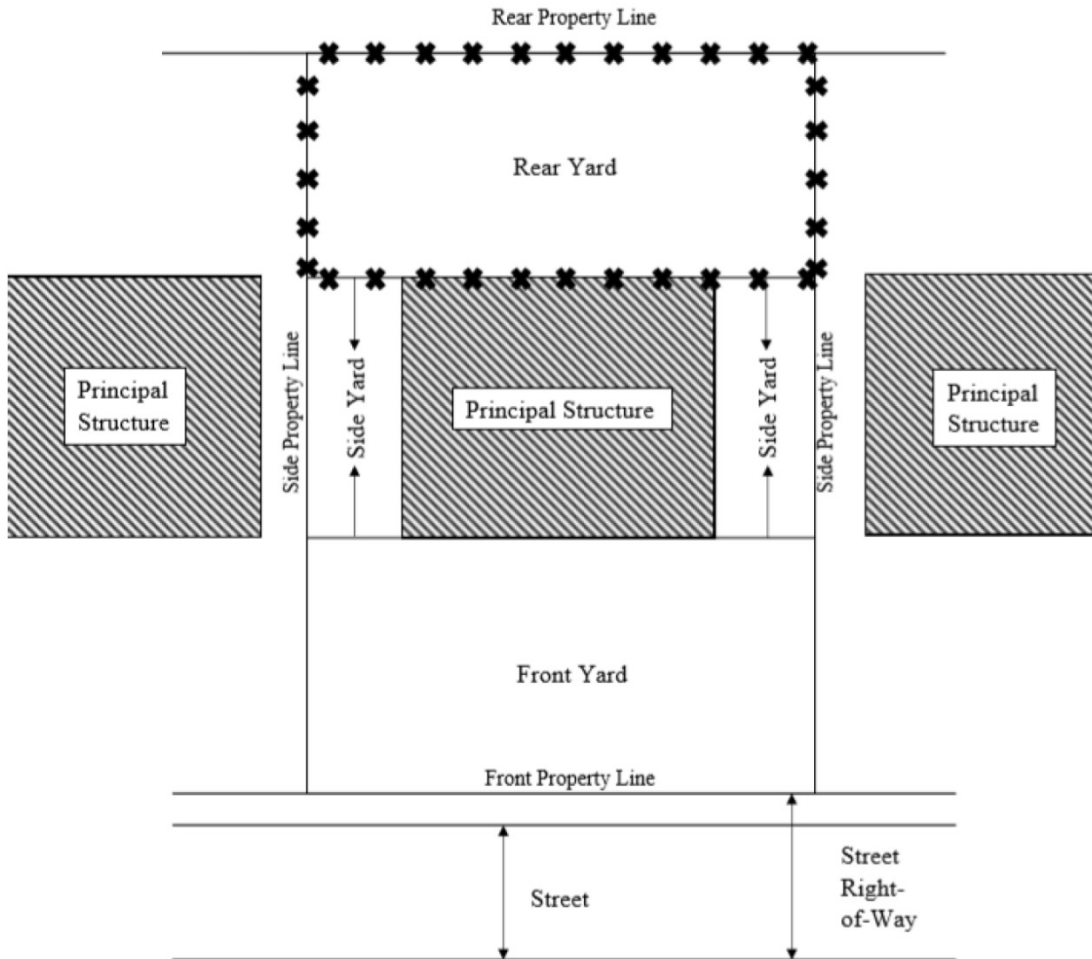


Figure 2
Permitted Fence Location for Residential Properties



ZONING

Figure 3

Permitted Fence Location for Residential Properties

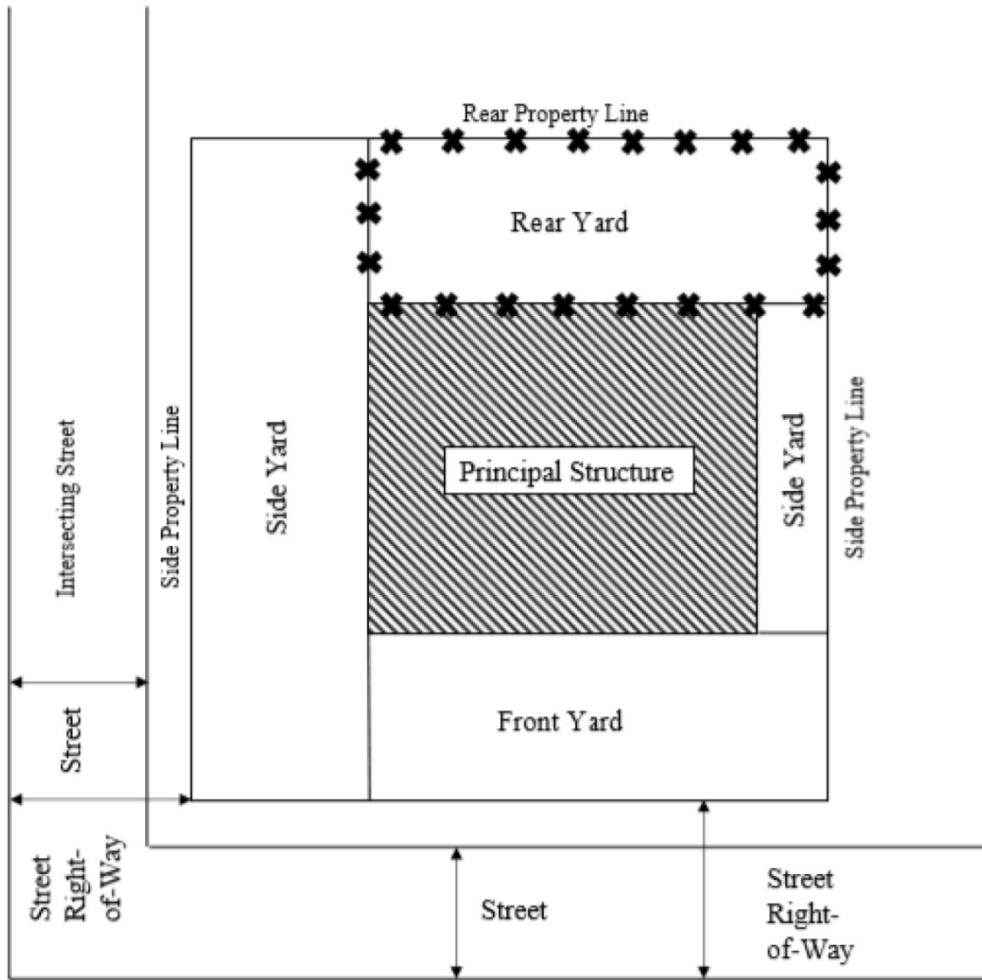
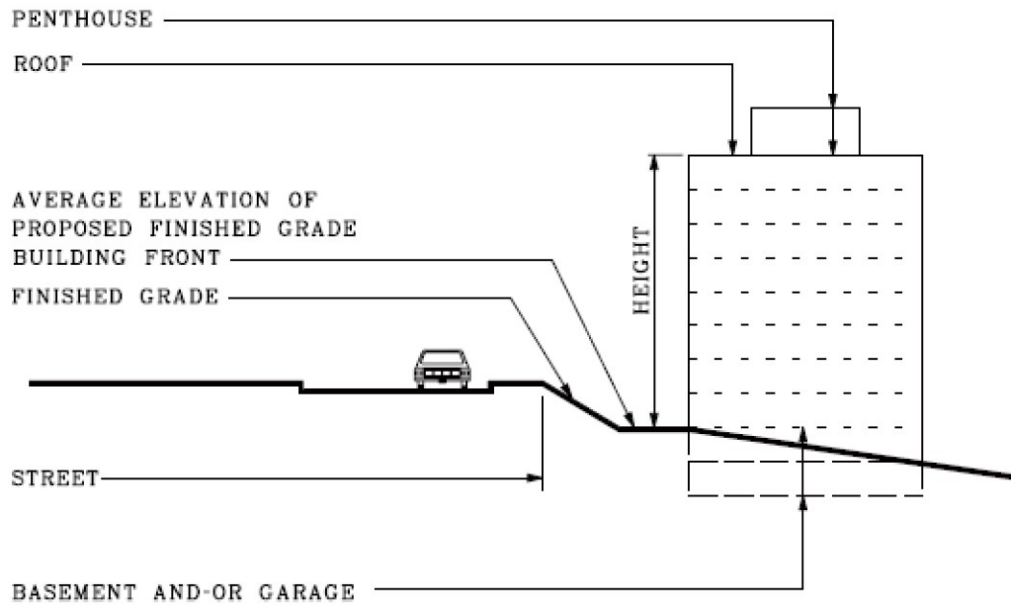
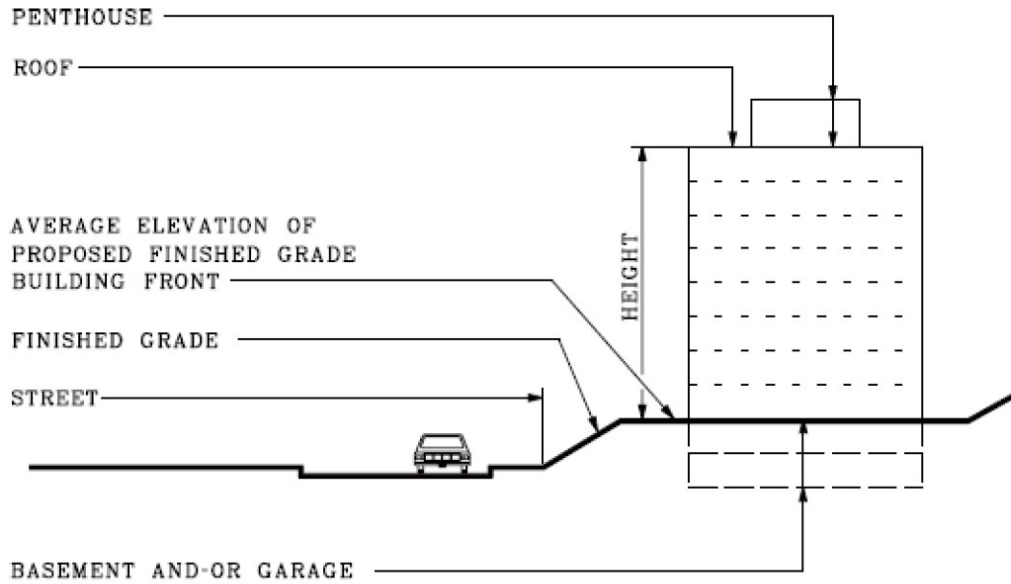


Figure 4
Building Heights

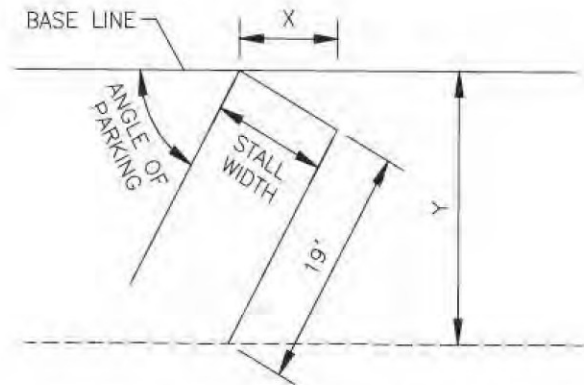


ZONING

Figure 5
Parking Requirements

Angle of Parking	10-Foot Stall		9-Foot Stall		Maneuvering Aisle Width	
	X	Y	X	Y	One-Way	Two-Way
0°	23.0	10	22.0	9.0	11	18
30°	20.0	18.2	18.0	17.3	11	19
45°	14.1	20.5	12.7	19.8	12	19
60°	11.5	21.5	10.4	21.0	17	19
75°	10.4	21.0	9.3	20.7	19.5	21
90°	10.0	19.0	9.0	19.0	22	22

*All dimensions are in feet.

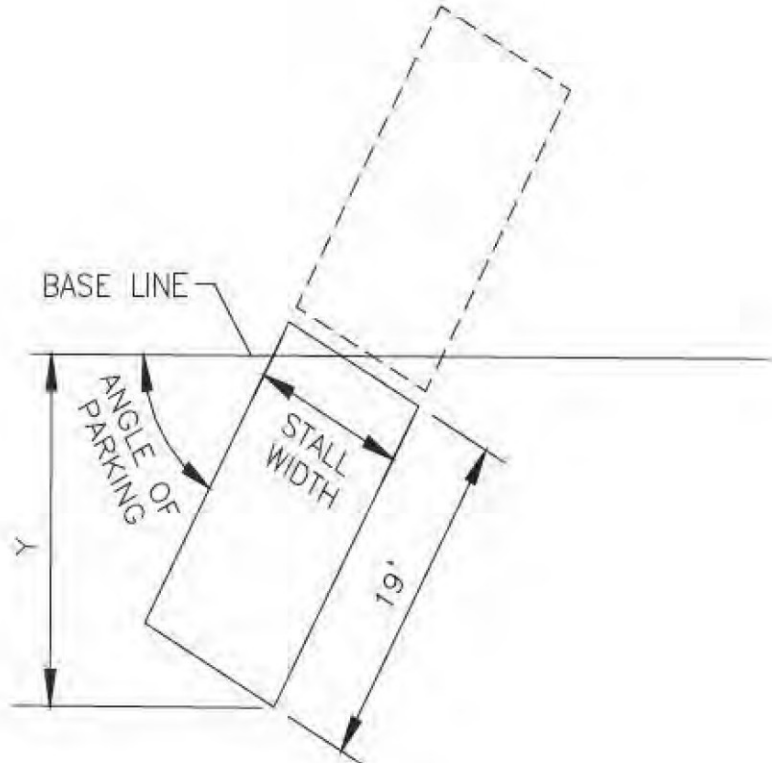


X=Stall length parallel to base line
Y=Stall depth perpendicular to base line

Figure 6
Herringbone Parking

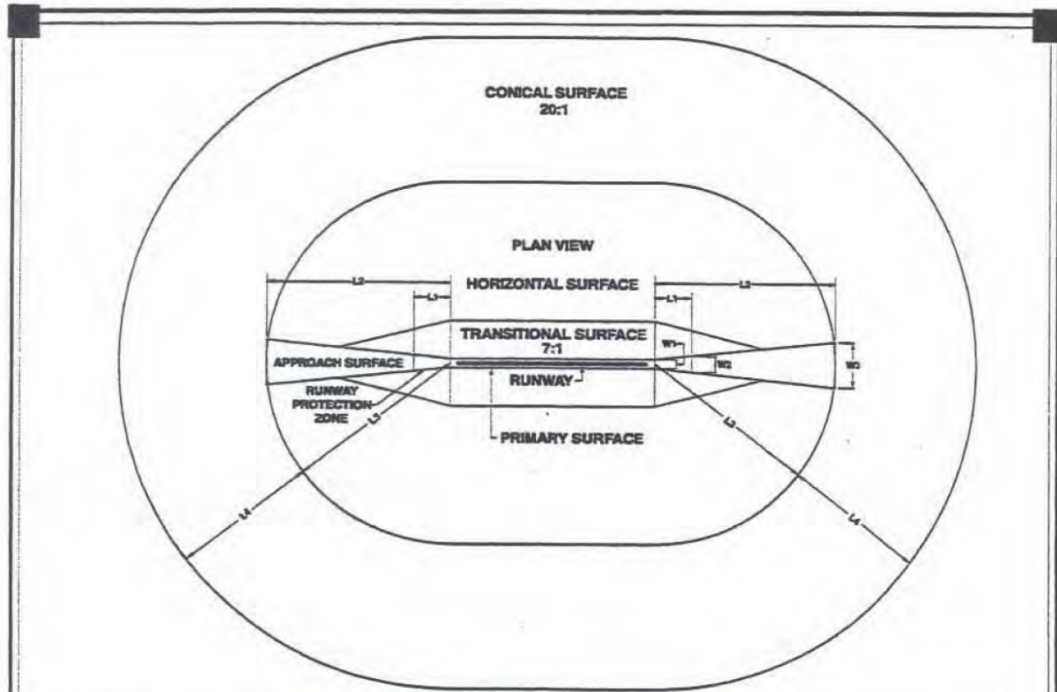
Angle of Parking	Dimension Y	
	10-Foot Stall	9-Foot Stall
30°	14.6	14.1
45°	17.7	17.3
60°	19.7	19.4
75°	20.4	20.2

*All dimensions are in feet.



ZONING

Figure 7
Part 77 Surface Areas



FAR PART 77 "IMAGINARY SURFACES" DIMENSION REQUIREMENTS

Runway Type	Runway End		Conical Surface (L4)	Horizontal Surface (L3)	Approach Surface			Approach Slope	Primary Surface Width	Transitional Surface
	Approach	Other			Length (L2)	Inner Width (W1)	Other Width (W3)			
Small Airplanes ²	V	V	4,000	5,000	5,000	250	1,250	20:1	250	7:1
		NP	4,000	5,000	5,000	500	1,250	20:1	500	7:1
		NP 3/4	4,000	5,000	5,000	1,000	1,250	20:1	1,000	7:1
		P	4,000	5,000	5,000	1,000	1,250	20:1	1,000	7:1
	NP	V	4,000	5,000	5,000	500	2,000	20:1	500	7:1
		NP	4,000	5,000	5,000	500	2,000	20:1	500	7:1
		NP 3/4	4,000	5,000	5,000	1,000	2,000	20:1	1,000	7:1
		P	4,000	5,000	5,000	1,000	2,000	20:1	1,000	7:1
Large Airplanes ³	V	V	4,000	5,000	5,000	500	1,500	20:1	500	7:1
		NP	4,000	10,000	5,000	500	1,500	20:1	500	7:1
		NP 3/4	4,000	10,000	5,000	1,000	1,500	20:1	1,000	7:1
		P	4,000	10,000	5,000	1,000	1,500	20:1	1,000	7:1
	NP	V	4,000	10,000	10,000	500	3,500	34:1	500	7:1
		NP	4,000	10,000	10,000	500	3,500	34:1	500	7:1
		NP 3/4	4,000	10,000	10,000	1,000	3,500	34:1	1,000	7:1
		P	4,000	10,000	10,000	1,000	3,500	34:1	1,000	7:1
Large and Small Airplanes	NP 3/4	V	4,000	10,000	10,000	1,000	4,000	34:1	1,000	7:1
		NP	4,000	10,000	10,000	1,000	4,000	34:1	1,000	7:1
		NP 3/4	4,000	10,000	10,000	1,000	4,000	34:1	1,000	7:1
		P	4,000	10,000	10,000	1,000	4,000	34:1	1,000	7:1
	P	V	4,000	10,000	10,000/40,000	1,000	4,000/16,000	50:1/40:1	1,000	7:1
		NP	4,000	10,000	10,000/40,000	1,000	4,000/16,000	50:1/40:1	1,000	7:1
		NP 3/4	4,000	10,000	10,000/40,000	1,000	4,000/16,000	50:1/40:1	1,000	7:1
		P	4,000	10,000	10,000/40,000	1,000	4,000/16,000	50:1/40:1	1,000	7:1

1 - In Feet
 2 - Less than 12,500 lbs maximum certified takeoff weight
 3 - Greater than 12,500 lbs maximum certified takeoff weight

V = Visual approach 20:1
 NP = Nonprecision approach 34:1
 NP 3/4 = Nonprecision approach with visibility minimums as low as 3/4 statute miles 34:1
 P = Precision approach 50:1

Note: L1 is the length of the RPZ and W2 is the outer width of the RPZ as defined by approach visibility minimums.

Source: Federal Aviation Administration

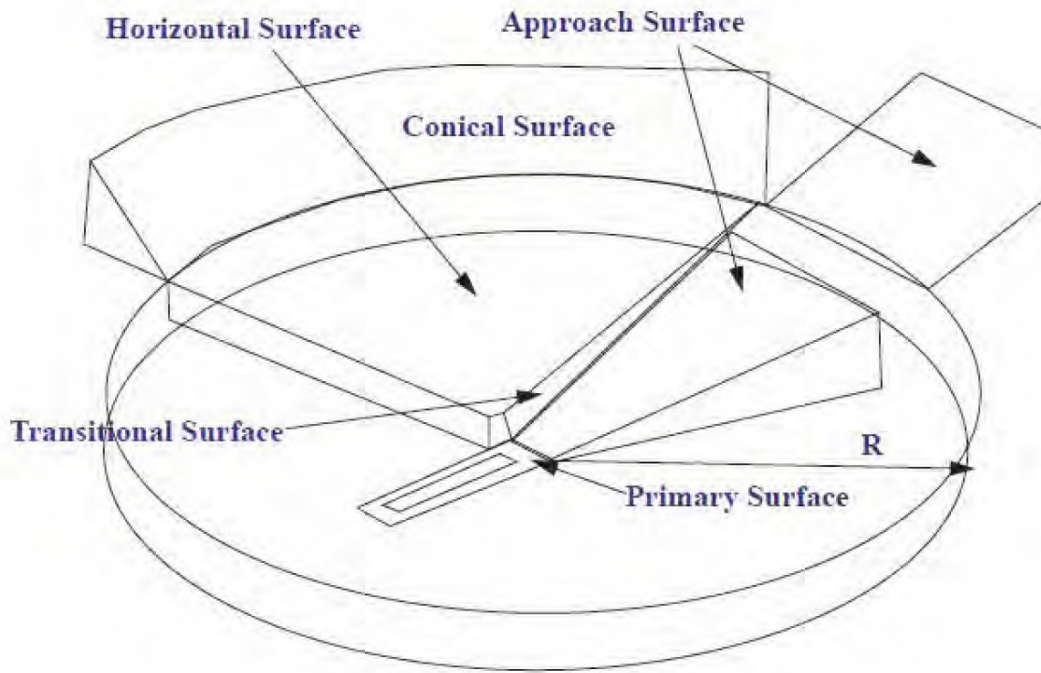


Pennsylvania Land Use
Compatibility
Guidelines

**FAR PART 77 SURFACES
AND DIMENSION REQUIREMENTS**

Exhibit
3

Figure 8
Graphic Representation of Overlay Zones



ZONING

Figure 9
Borough Standards – Typical Driveway Geometry

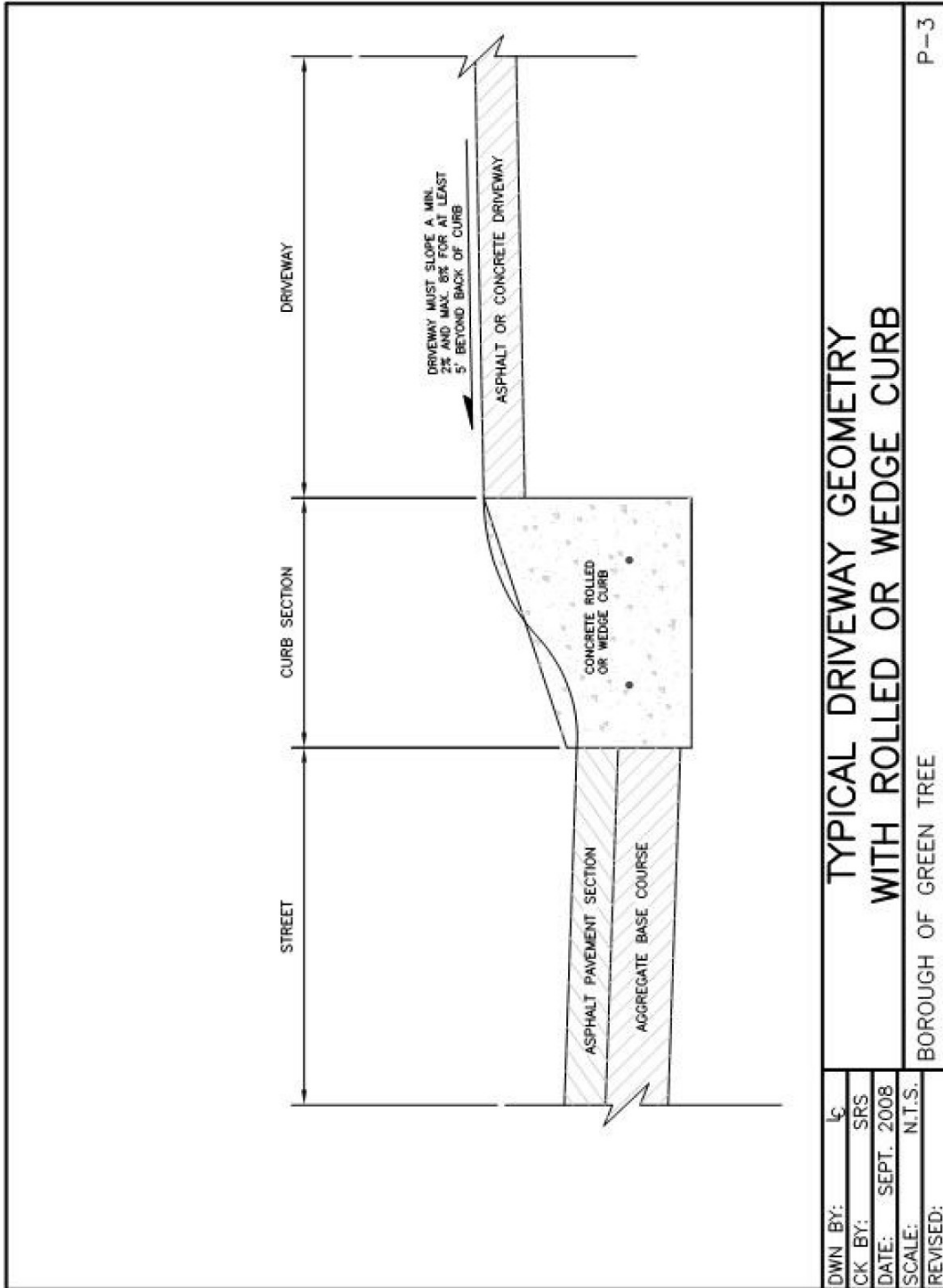
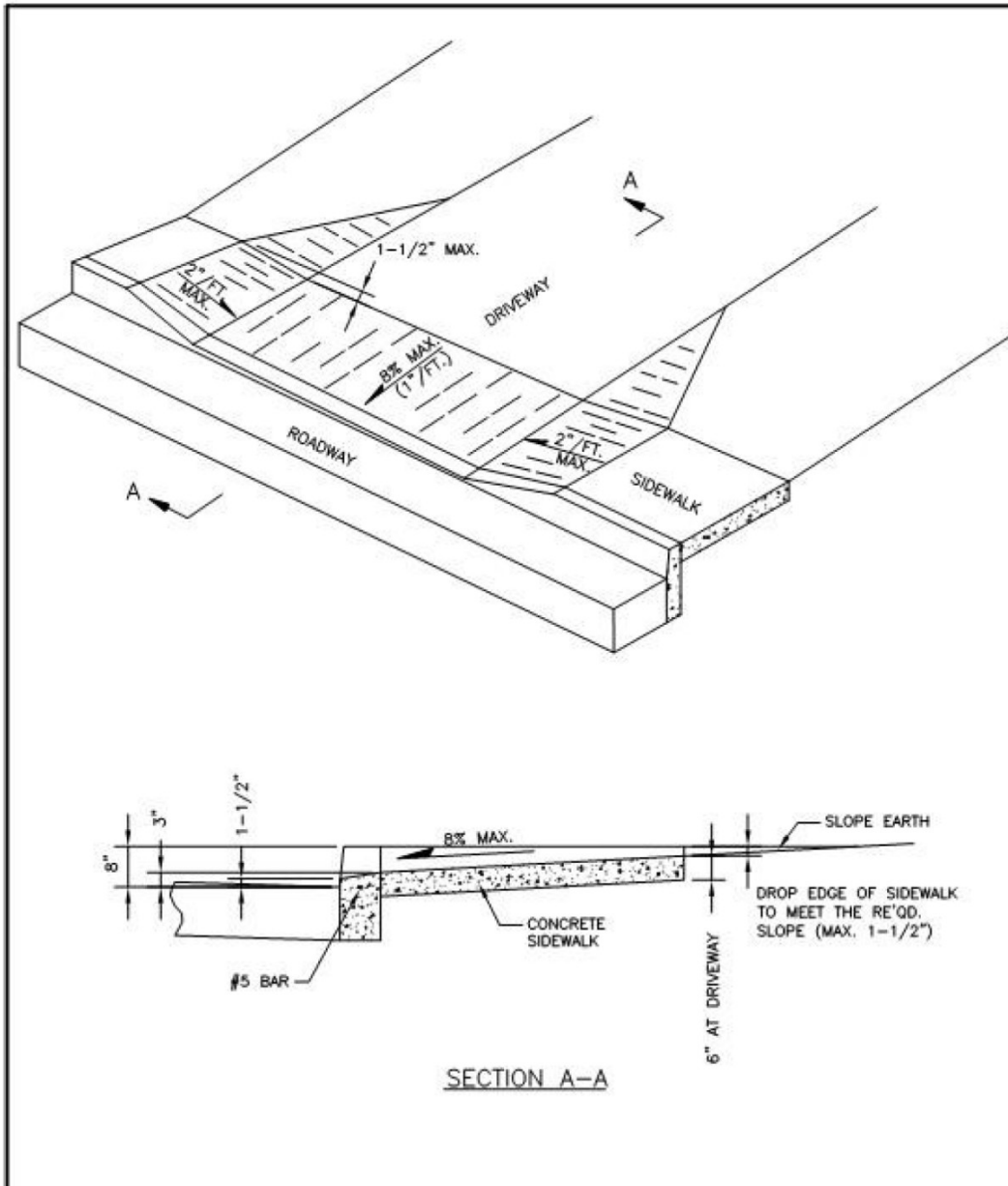


Figure 10
Borough Standards – Typical Driveway Transition



REFERENCE: PENNSYLVANIA CODE, TITLE 67, CHAPTER 441 – ACCESS TO AND OCCUPANCY OF HIGHWAYS BY DRIVEWAYS AND LOCAL ROADS.

DWN BY: <i>lc</i>	TYPICAL DRIVEWAY TRANSITION
CK BY: SRS	
DATE: MAY 2005	
SCALE: N.T.S.	
REVISED:	
BOROUGH OF GREEN TREE	
P-4	

ZONING

Figure 11
Borough Standards – Reinforced Concrete Sidewalk

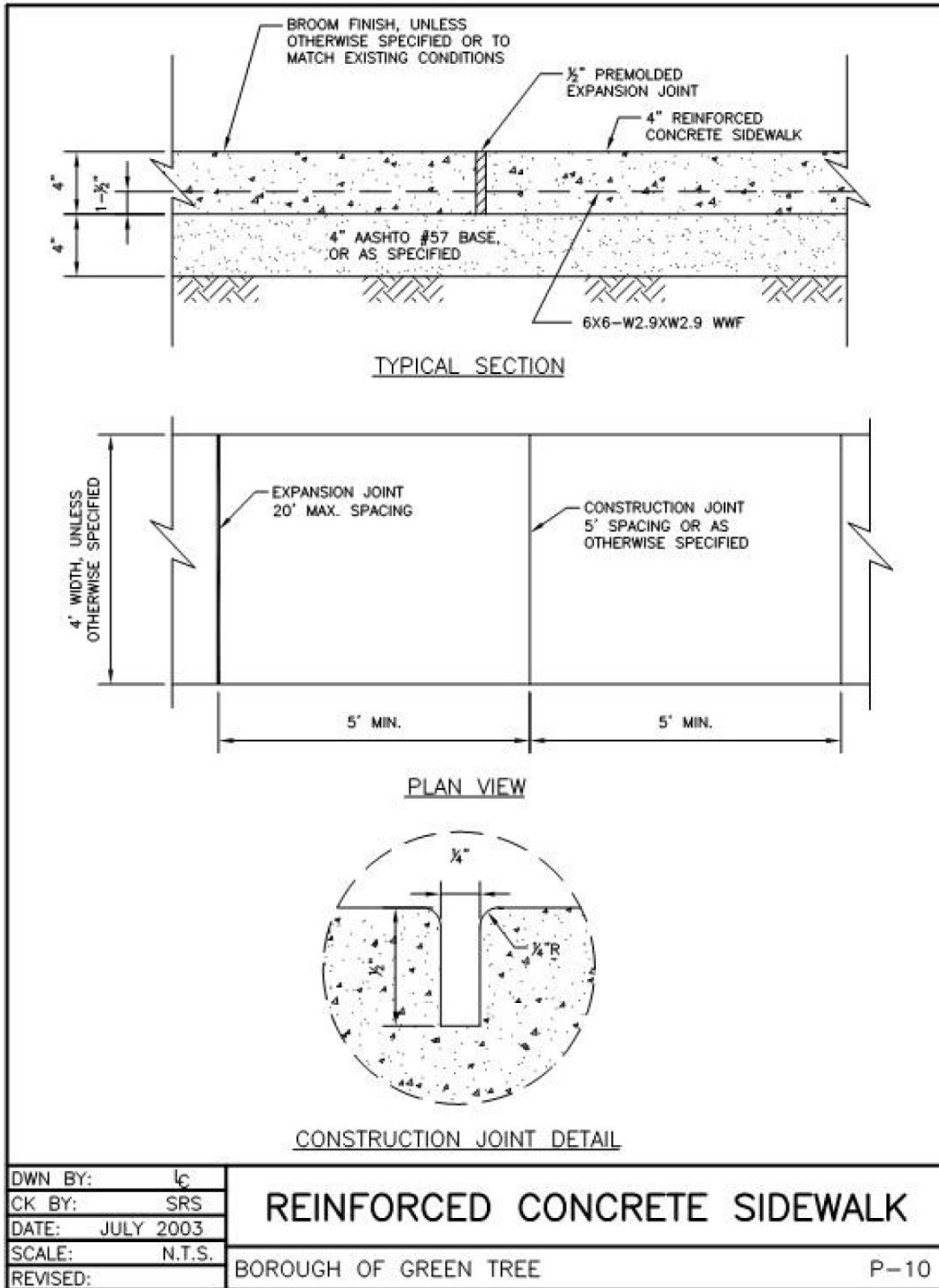


Figure 12
Borough Standards – Reinforced Concrete Driveway Replacement

