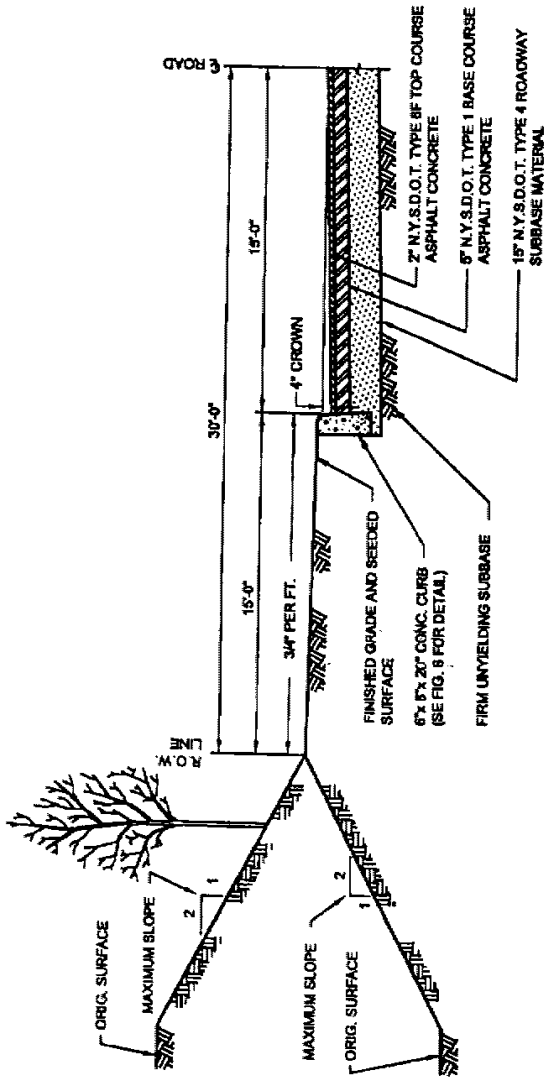


STREETS AND SIDEWALKS

130 Attachment 1

ROAD SPECIFICATIONS

FIGURE 1  
Typical Cross Section, Major Road



- NOTES:
1. ALL TREES WITHIN R.O.W. LINES TO BE REMOVED.
  2. SIDEWALK NOT SHOWN BUT REQUIRED UNLESS REQUIREMENT IS WAIVED BY THE TOWN BOARD.

FIGURE 1  
TYPICAL CROSS SECTION  
MAJOR ROAD  
SCALE: NONE

PREPARED BY:  
**MHE** McGOEY, HAUSER & EDSELL  
CONSULTING ENGINEERS, P.C.

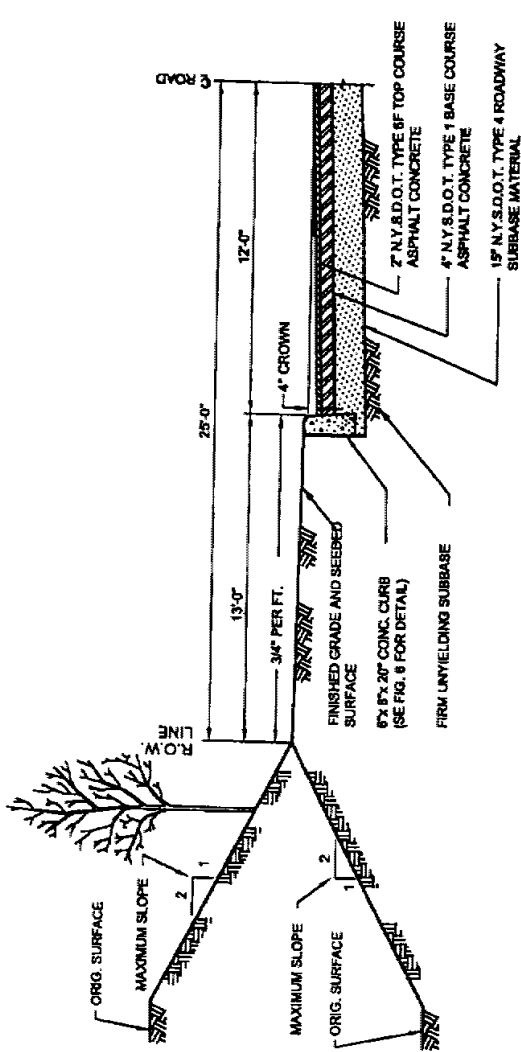
TOWN OF MARLBOROUGH  
ULSTER COUNTY, NEW YORK



STREETS AND SIDEWALKS

ROAD SPECIFICATIONS FOR TOWN ROADS

FIGURE 2  
Typical Cross Section, Secondary Road



NOTES:

1. ALL TREE WITHIN R.O.W. LINES TO BE REMOVED.
2. SIDEWALK NOT SHOWN BUT REQUIRED UNLESS REQUIREMENT IS WAIVED BY THE TOWN BOARD.

FIGURE 2

TYPICAL CROSS SECTION

SECONDARY ROAD

SCALE: NONE

PREPARED BY:  
**MHE**  
McCoy, Hauser & Esall  
CONSULTING ENGINEERS, P.C.

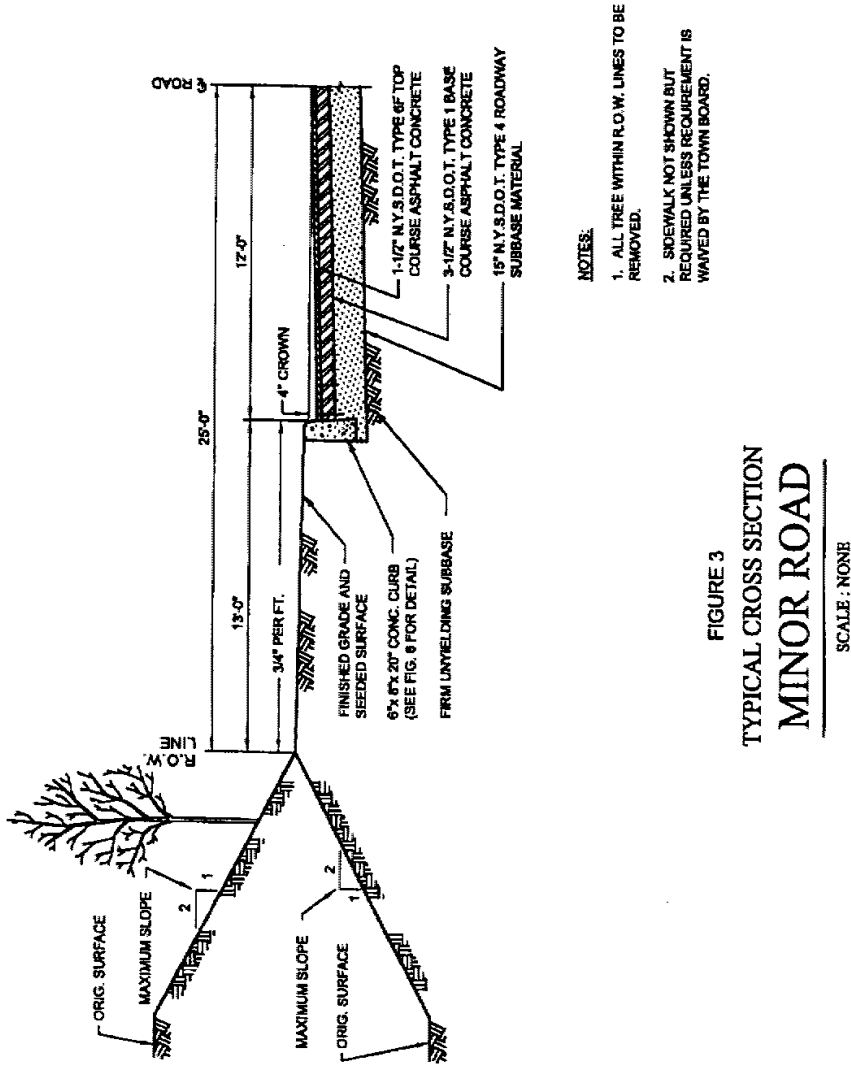
TOWN OF MARLBOROUGH  
ULSTER COUNTY, NEW YORK



STREETS AND SIDEWALKS

ROAD SPECIFICATIONS FOR TOWN ROADS

FIGURE 3  
Typical Cross Section, Minor Road



- NOTES:
1. ALL TREE WITHIN R.O.W. LINES TO BE REMOVED.
  2. SIDEWALK NOT SHOWN BUT REQUIRED UNLESS REQUIREMENT IS WAIVED BY THE TOWN BOARD.

PREPARED BY:  
**MHE**  
MCCOY, HAUSER and EDSELL  
CONSULTING ENGINEERS, P.C.

TOWN OF MARLBOROUGH  
ULSTER COUNTY, NEW YORK



STREETS AND SIDEWALKS

ROAD SPECIFICATIONS FOR TOWN ROAD

FIGURE 4  
Catch Basin Detail

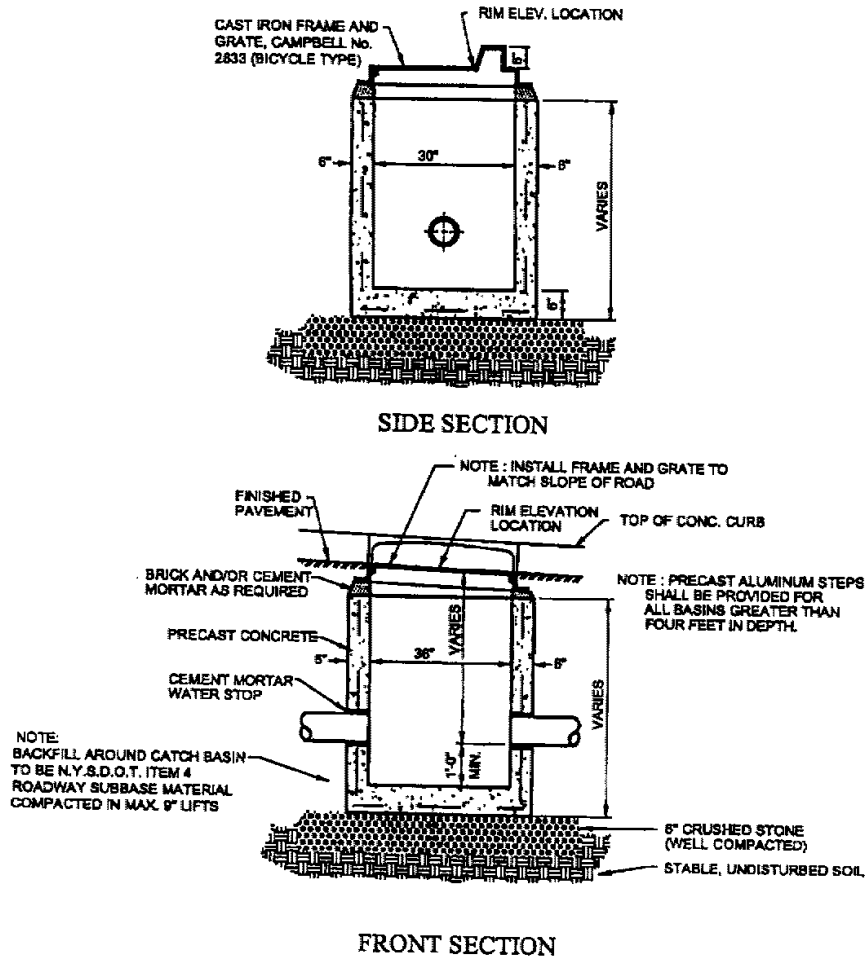


FIGURE 4

CATCH BASIN DETAIL

SCALE: NONE

TOWN OF MARLBOROUGH  
ULSTER COUNTY, NEW YORK

PREPARED BY:

**MHE** McGOEY, HAUSER and EDSALL  
CONSULTING ENGINEERS, P.C.



STREETS AND SIDEWALKS

ROAD SPECIFICATIONS FOR TOWN ROADS

FIGURE 5  
Catch Basin Detail

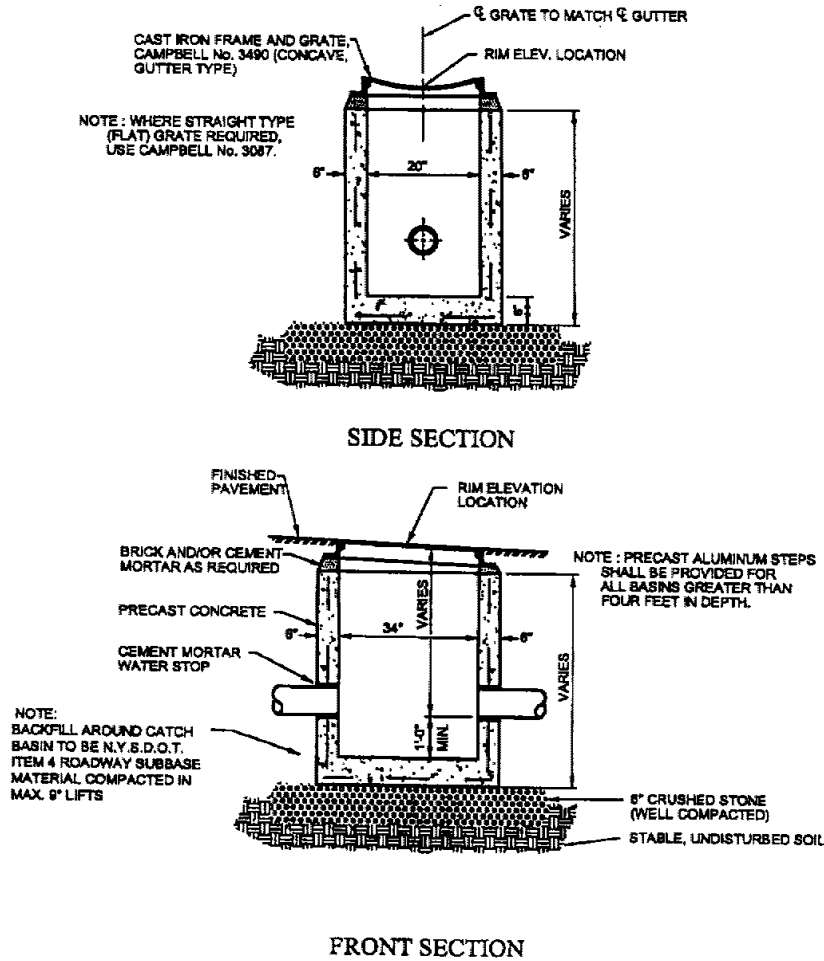


FIGURE 5  
**CATCH BASIN DETAIL**

SCALE : NONE

TOWN OF MARLBOROUGH  
ULSTER COUNTY, NEW YORK

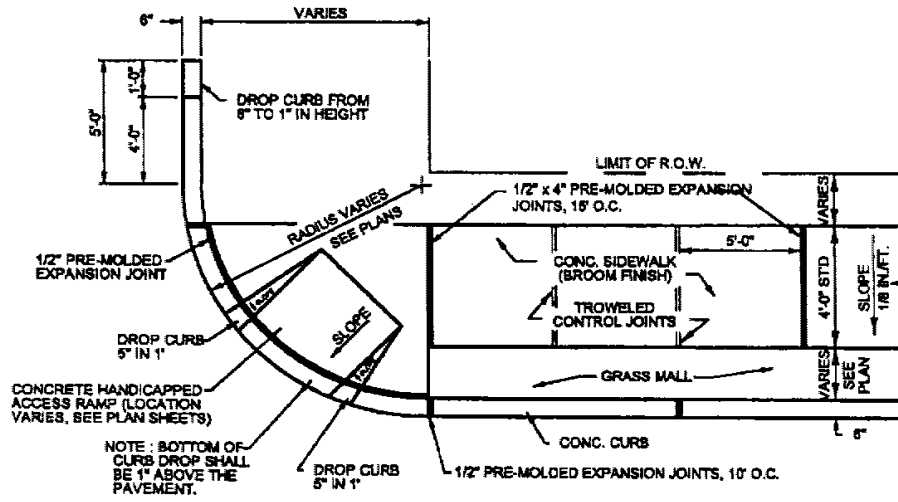
PREPARED BY:  
**MHE** MCGOEY, HAUSER & EDSALL  
CONSULTING ENGINEERS, P.C.



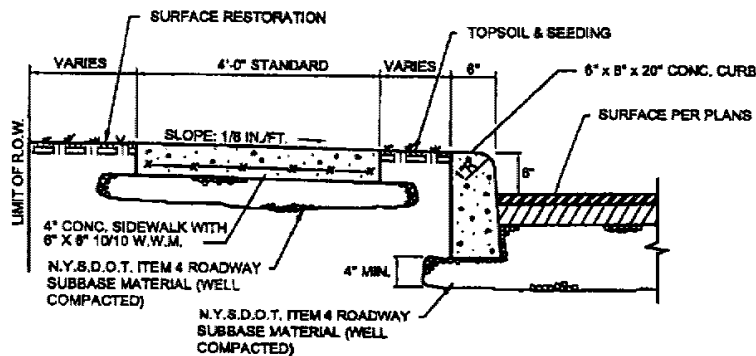
STREETS AND SIDEWALKS

ROAD SPECIFICATIONS FOR TOWN ROADS

FIGURE 6  
Sidewalk and Curb Detail



PLAN



SECTION

FIGURE 6

SIDEWALK AND CURB DETAIL

SCALE: NONE

TOWN OF MARLBOROUGH  
ULSTER COUNTY, NEW YORK

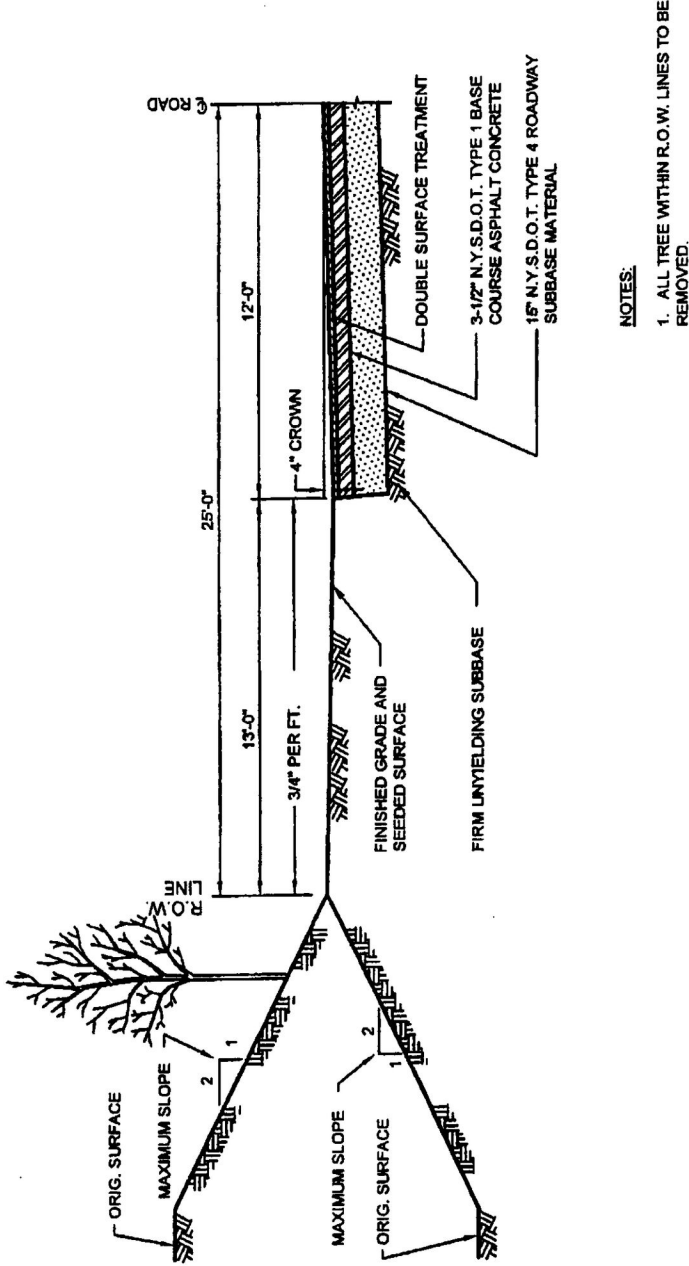
PREPARED BY:

**MHE** MCGOY, HAUSER and EDSALL  
CONSULTING ENGINEERS, P.C.



STREETS AND SIDEWALKS

**FIGURE 7**  
**Typical Cross Section, Private Road**  
 [Added 10-12-2010 by L.L. No. 7-2010]



**NOTES:**

1. ALL TREE WITHIN R.O.W. LINES TO BE REMOVED.

**FIGURE 7**  
**TYPICAL CROSS SECTION**  
**PRIVATE ROAD**

SCALE : NONE

\*\* MAXIMUM LENGTH OF PRIVATE ROAD THAT ENDS IN A CUL-DE-SAC IS 2000 FEET.

PREPARED BY:

**MHE**  
 McGOEY, HAUSER and EDSALL  
 CONSULTING ENGINEERS, P.C.

TOWN OF MARLBOROUGH  
 ULSTER COUNTY, NEW YORK