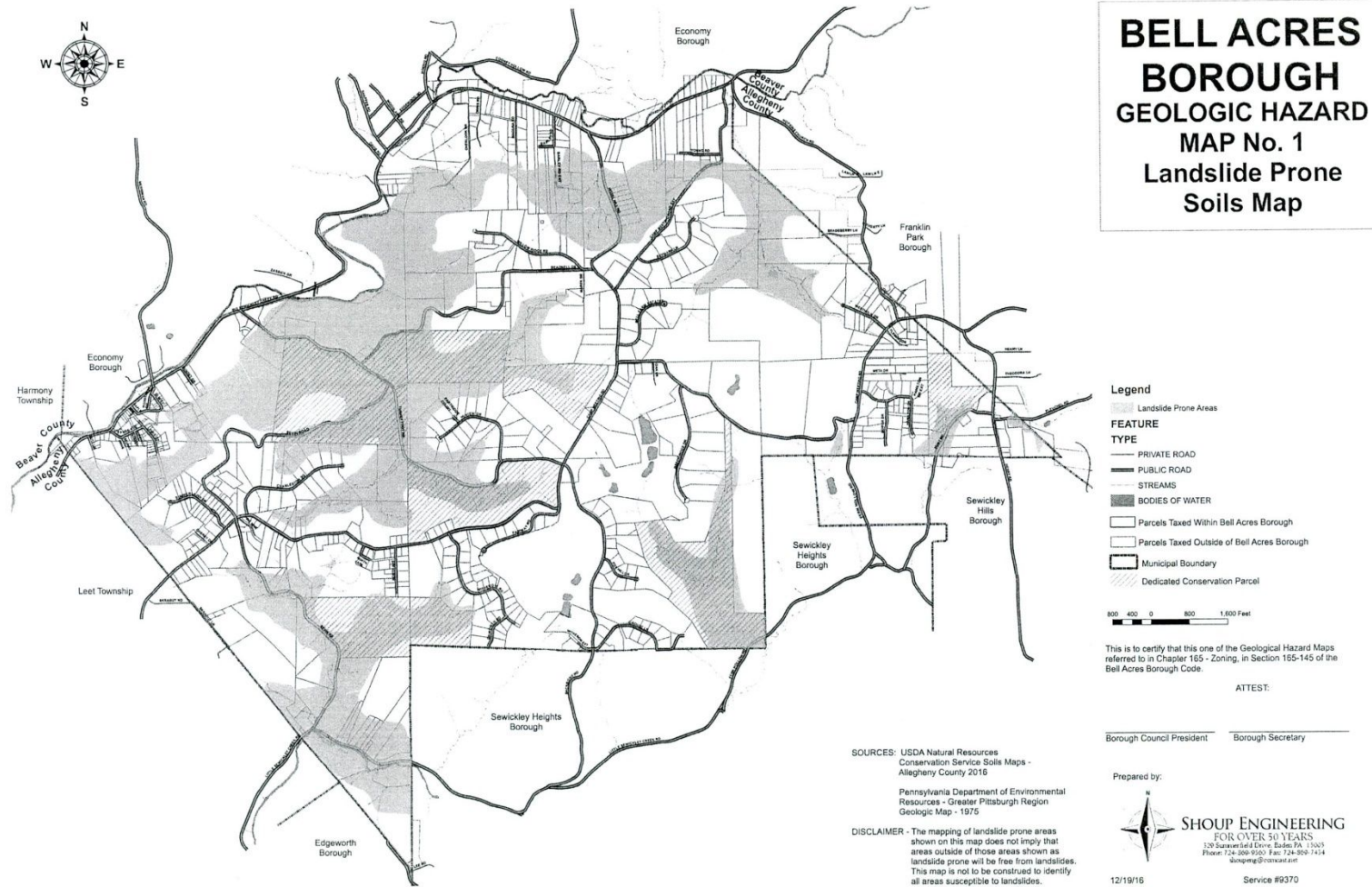


ZONING

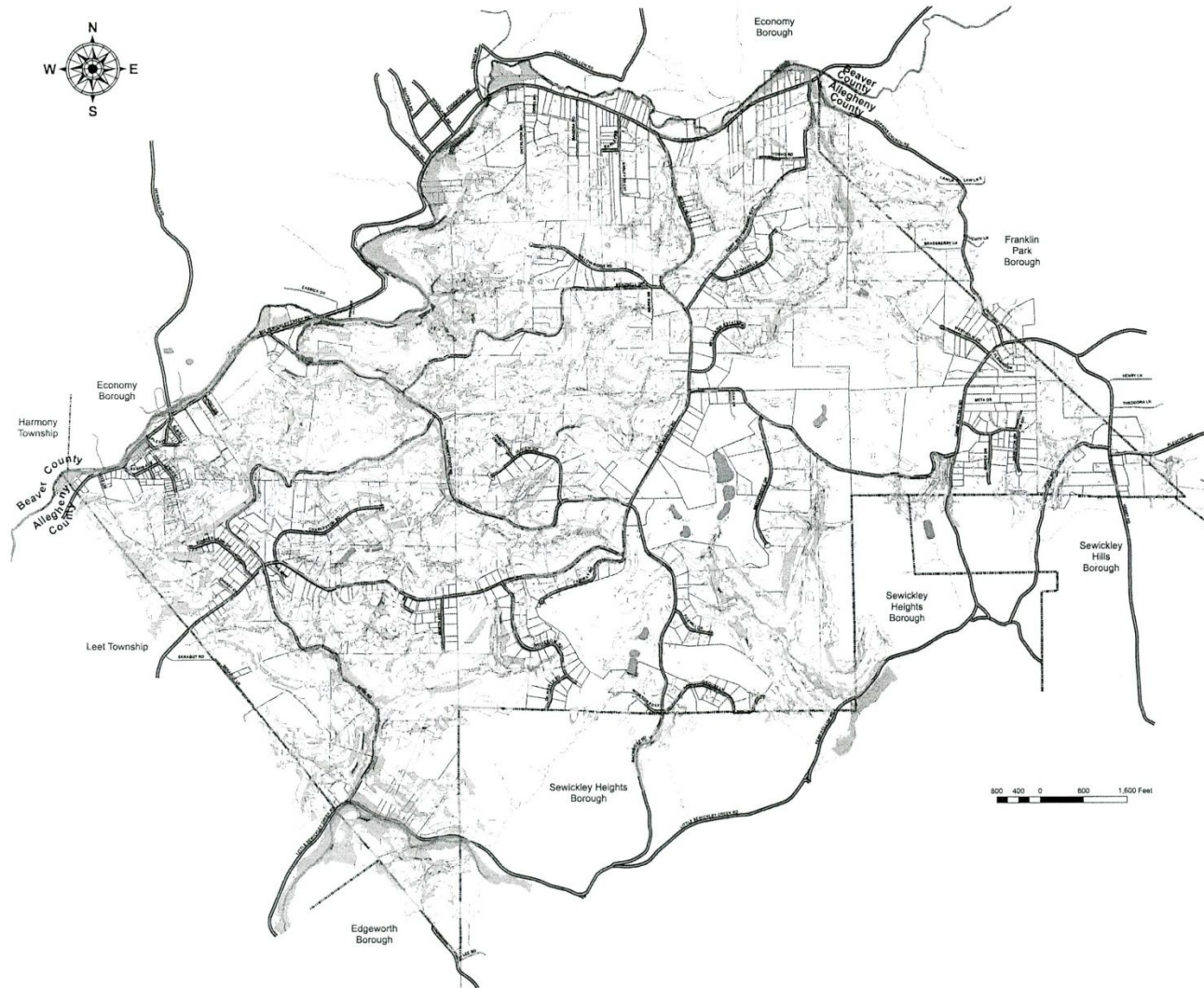
165 Attachment 8

Borough of Bell Acres

Geological Hazard Maps



BELL ACRES CODE



BELL ACRES BOROUGH GEOLOGICAL HAZARD MAP No. 2 Slope Map

- Legend**
- SLOPES**
- Moderate 16-25%
 - Steep 26-40%
 - Very Steep 40+%
 - STREAMS
- FEATURE TYPE**
- PRIVATE ROAD
 - PUBLIC ROAD
 - MUNICIPAL BOUNDARY
- Parcels Taxed Within Bell Acres Borough
 - Parcels Taxed Outside of Bell Acres Borough
 - 1% Annual Chance of Flooding
 - BODIES OF WATER

This is to certify that this is one of the Geologic Hazard Maps referred to in Chapter 165 - Zoning, in Section 165-145 of the Bell Acres Borough Code.

ATTEST:

Borough Council President Borough Secretary

Prepared by:



12/19/16

Service #9370