

ZONING AND LAND DEVELOPMENT

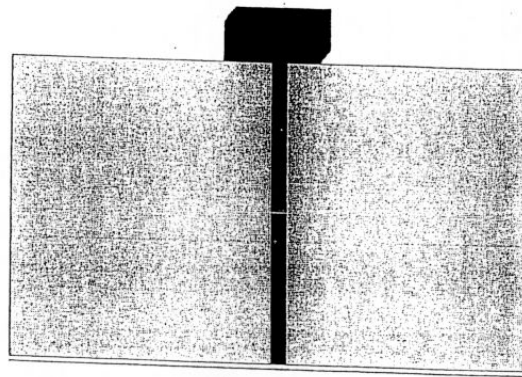
301 Attachment 8

Town of Riverhead

Guidelines for Exterior Lighting

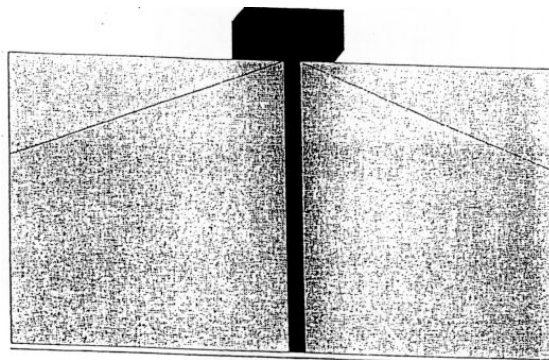
Figure 1
Fully Shielded Fixture

No light emitted above the lowest light-emitting part of the fixture and no restriction as to amount at various angles below the horizontal.



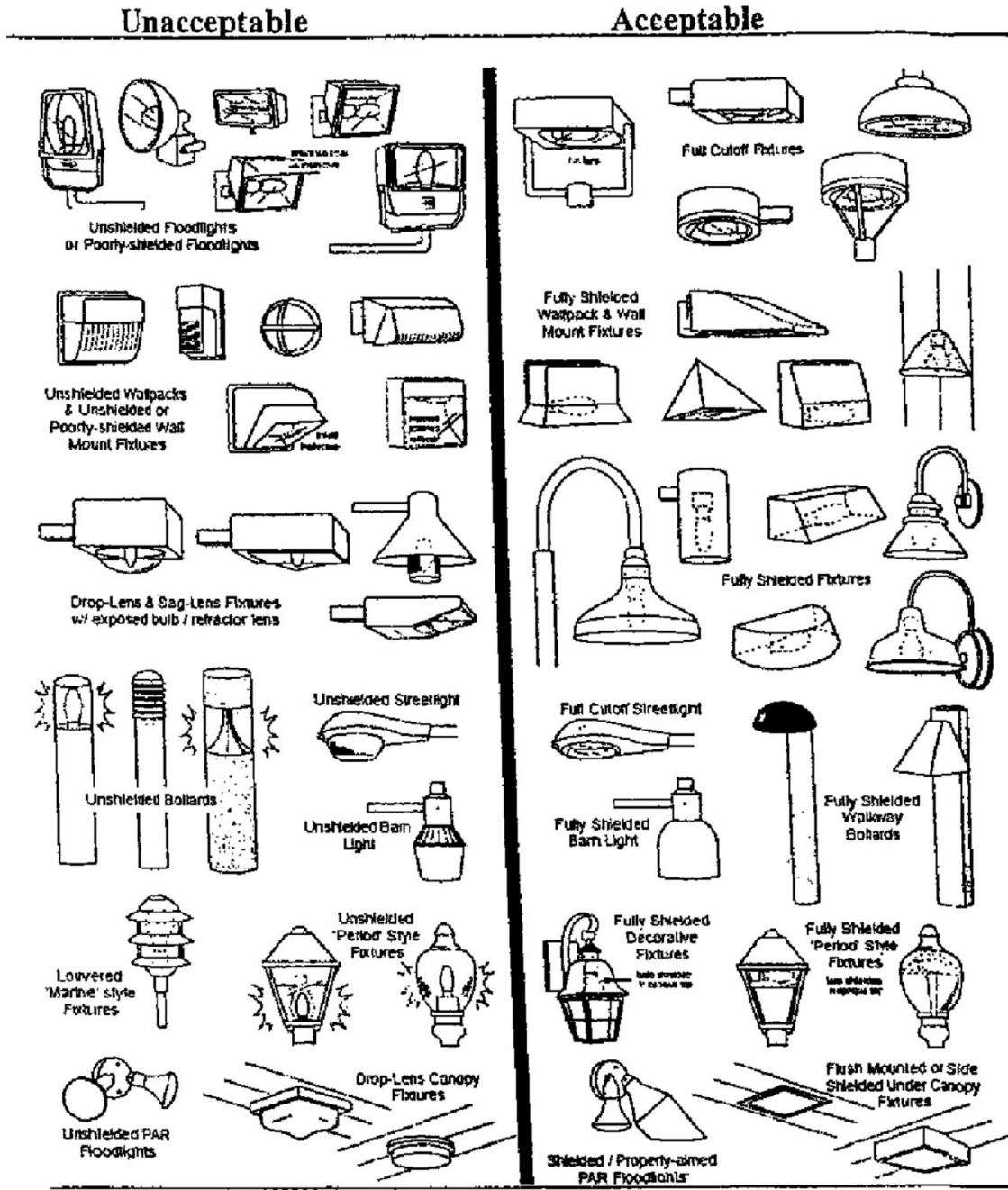
Full Cutoff Fixture

Additionally restricts the amount of light emitted in the “glare zone” (90° to 80° below horizontal) to 10% of the total light output.



RIVERHEAD CODE

Figure 2

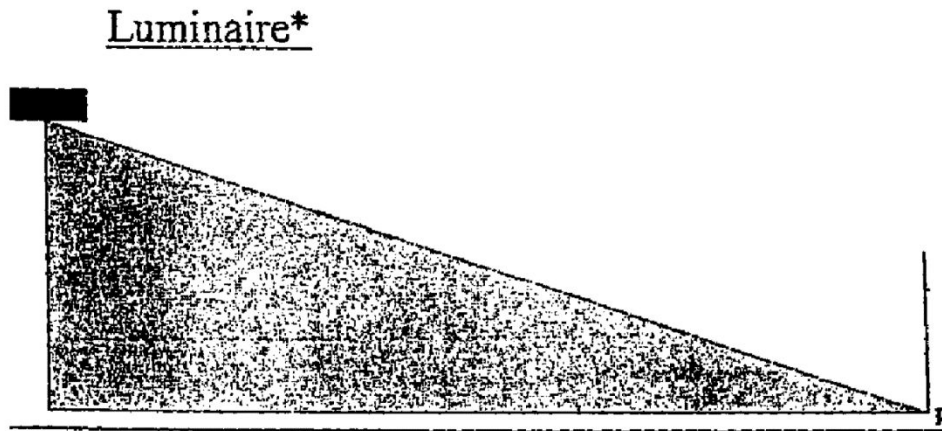


ZONING AND LAND DEVELOPMENT

Figure 3

Calculating Fixture Height in Relation to Distance to Property Line

Without available photometric data to execute a lighting plan, fixture placement setbacks can help to reduce incidence of light trespass and glare across property lines.



Mounting height = $1/3$ distance to property line plus three feet.

A fully shielded or FCO fixture will generally contain light to a site to reduce light trespass if this formula is followed: Divide the distance (D) to the property line by three and add three feet to equal the maximum mounting height (MH). Formula: MH no greater than $1/3$ distance to property line plus three feet (the Kennebunkport Formula).

* Assumes common FCO luminaire. Asymmetrical “sharp cutoff” FCO luminaires that have steeper cutoff angles or shielding at the house side may be placed closer to property boundaries, provided their cutoff angles do not result in light trespass and footcandle measurements can be provided on a lighting plan.