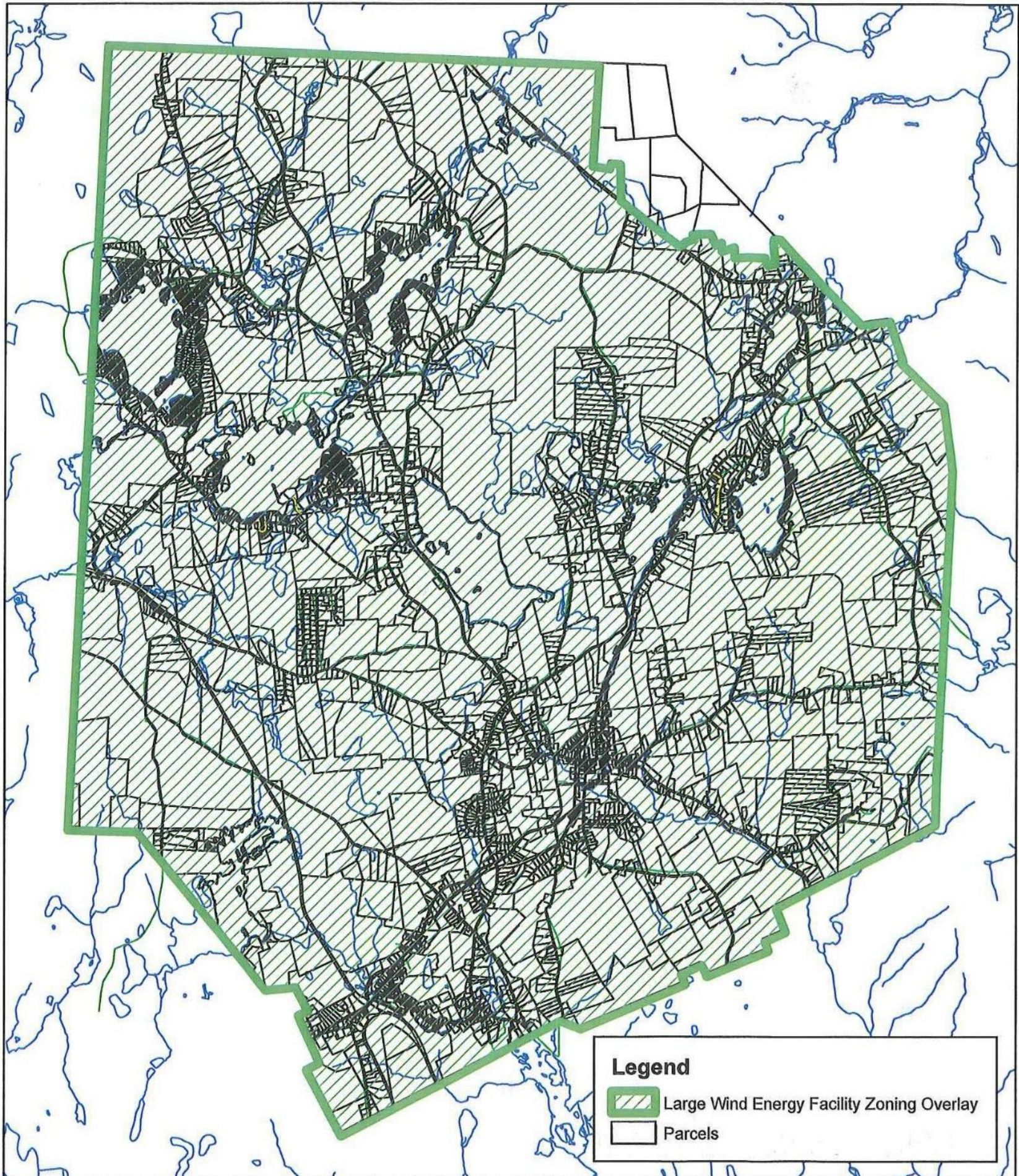


ZONING

250 Attachment 4

Town of Ashburnham

# Large Wind Energy Facility Zoning Overlay District



Prepared by Eric R. Smith, Ashburnham Town Planner 0 2,500 5,000 10,000 15,000 20,000 Feet  
Sources: Parcels prepared by the UMass Amherst Office of Geographic Information and Analysis, 2007; To be used for Planning purposes only.

Large Wind Energy Facilities Zoning Overlay District, established under Section 5.17.3(B) of the Ashburnham Zoning Bylaw, as approved by Ashburnham Fall 2008 Special Town Meeting, November 13, 2008