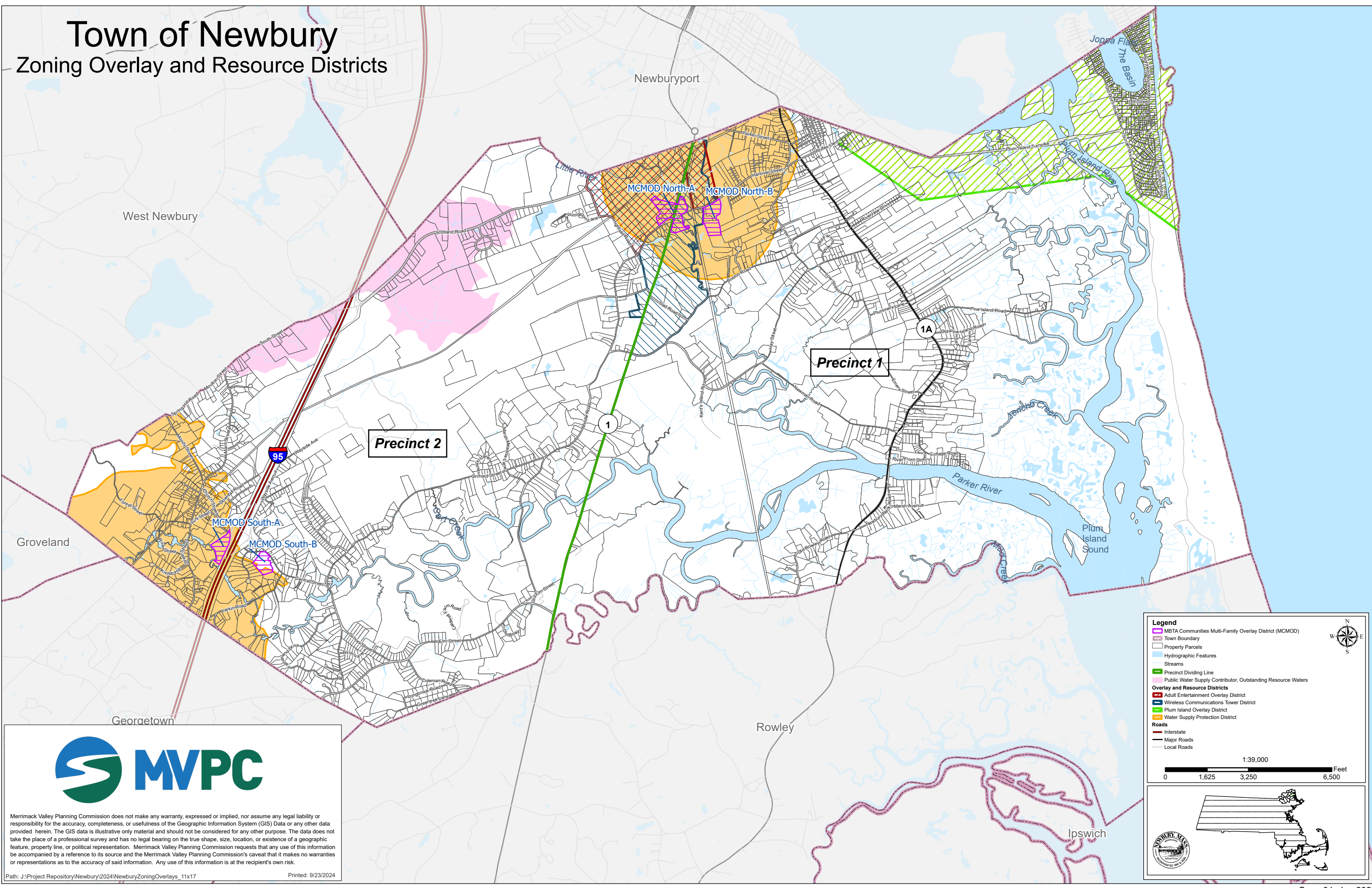


Town of Newbury

Zoning Overlay and Resource Districts



Merrimack Valley Planning Commission does not make any warranty, expressed or implied, nor assume any legal liability or responsibility for the accuracy, completeness, or usefulness of the Geographic Information System (GIS) Data or any other data provided herein. The GIS data is illustrative only material and should not be considered for any other purpose. The data does not take the place of a professional survey and has no legal bearing on the true shape, size, location, or existence of a geographic feature, property line, or political representation. Merrimack Valley Planning Commission requests that any use of this information be accompanied by a reference to its source and the Merrimack Valley Planning Commission's caveat that it makes no warranties or representations as to the accuracy of said information. Any use of this information is at the recipient's own risk.

Path: J:\Project Repository\Newbury\2024\NewburyZoningOverlays_11x17 Printed: 9/23/2024

Legend

- MBTA Communities Multi-Family Overlay District (MCMOD)
- Town Boundary
- Property Parcels
- Hydrographic Features
- Streams
- Precinct Dividing Line
- Public Water Supply Contributor, Outstanding Resource Waters

Overlay and Resource Districts

- Adult Entertainment Overlay District
- Wireless Communications Tower District
- Plum Island Overlay District
- Water Supply Protection District

Roads

- Interstate
- Major Roads
- Local Roads

1:39,000
0 1,625 3,250 6,500 Feet