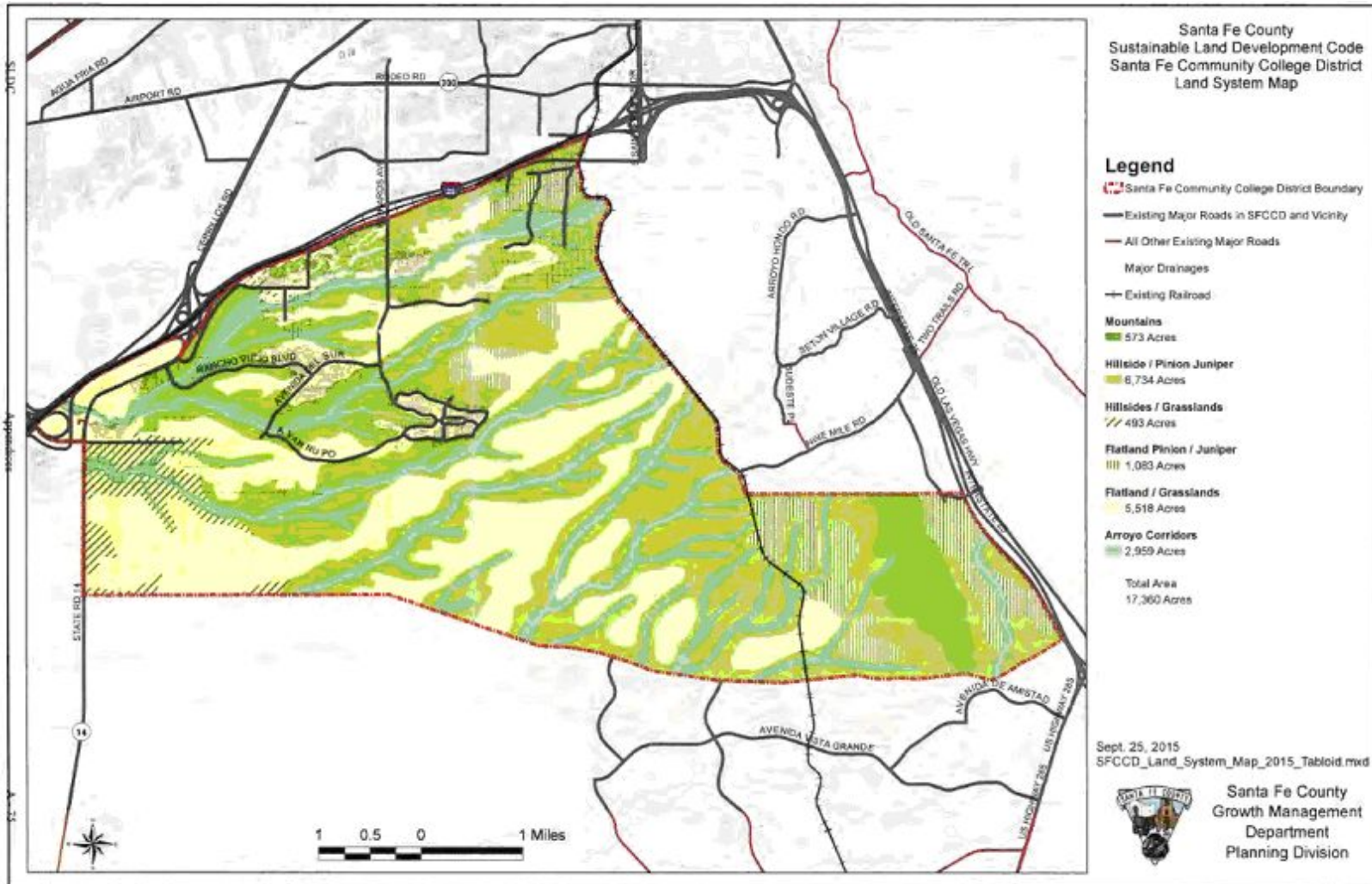


SUSTAINABLE LAND DEVELOPMENT CODE

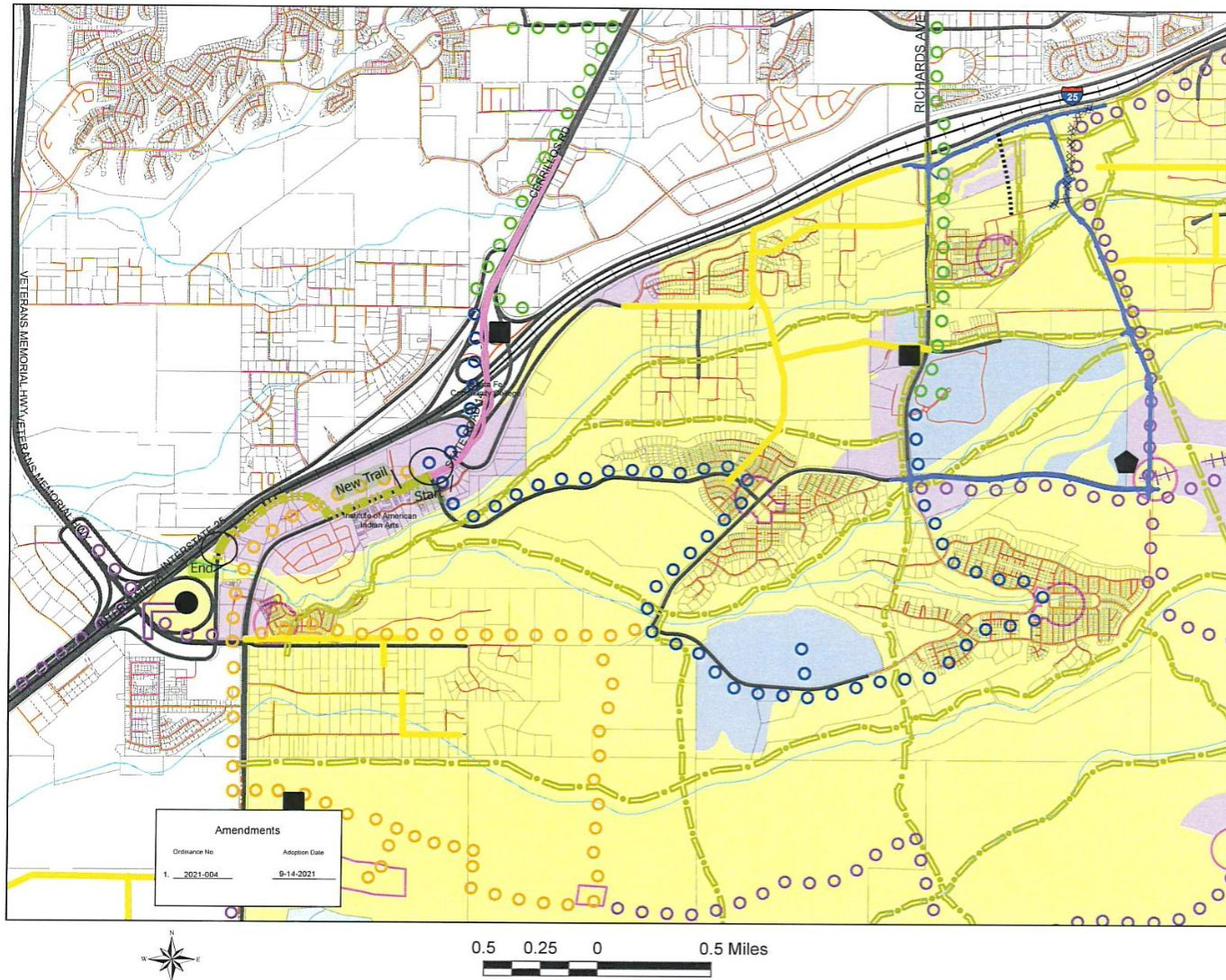
150A Attachment 7

Appendix F: Planned Development Community College District Maps



(Ordinance 2016-9 adopted 12/13/16)

SANTA FE COUNTY CODE



Detail of Santa Fe County Sustainable Land Development Code Santa Fe Community College District Circulation Map

Legend

- NMDOT Trail
 - Oshara_North_Connector_Road
 - Roads to be Removed
 - Northeast and Southeast Corridor Projects (in progress)
 - Park and Ride - "P"
 - Railroad Stations - "R"
 - Transportation Center - "T"
 - Low Water Crossing
 - Existing Railroad
 - Existing Rail Road SFCCD
 - Proposed Rail Road
 - Existing Transit Routes
 - Phase I Transit
 - Future Transit
 - Roads Requiring Future Study
 - Proposed Secondary Roads, in SFCCD
 - District Trails Proposed Alignments
 - Export_Output_8
 - Existing Primary Roads, in SFCCD and Vicinity
 - Minor Roads
 - Major Roads
 - Major Drainages
 - Parcels
 - Existing Railroad
 - New Community Centers
 - SFCCD_Circulation_Map_Oshara_7_21_Amendm
- Empl_Cent**
- 1
 - 1
 - 1

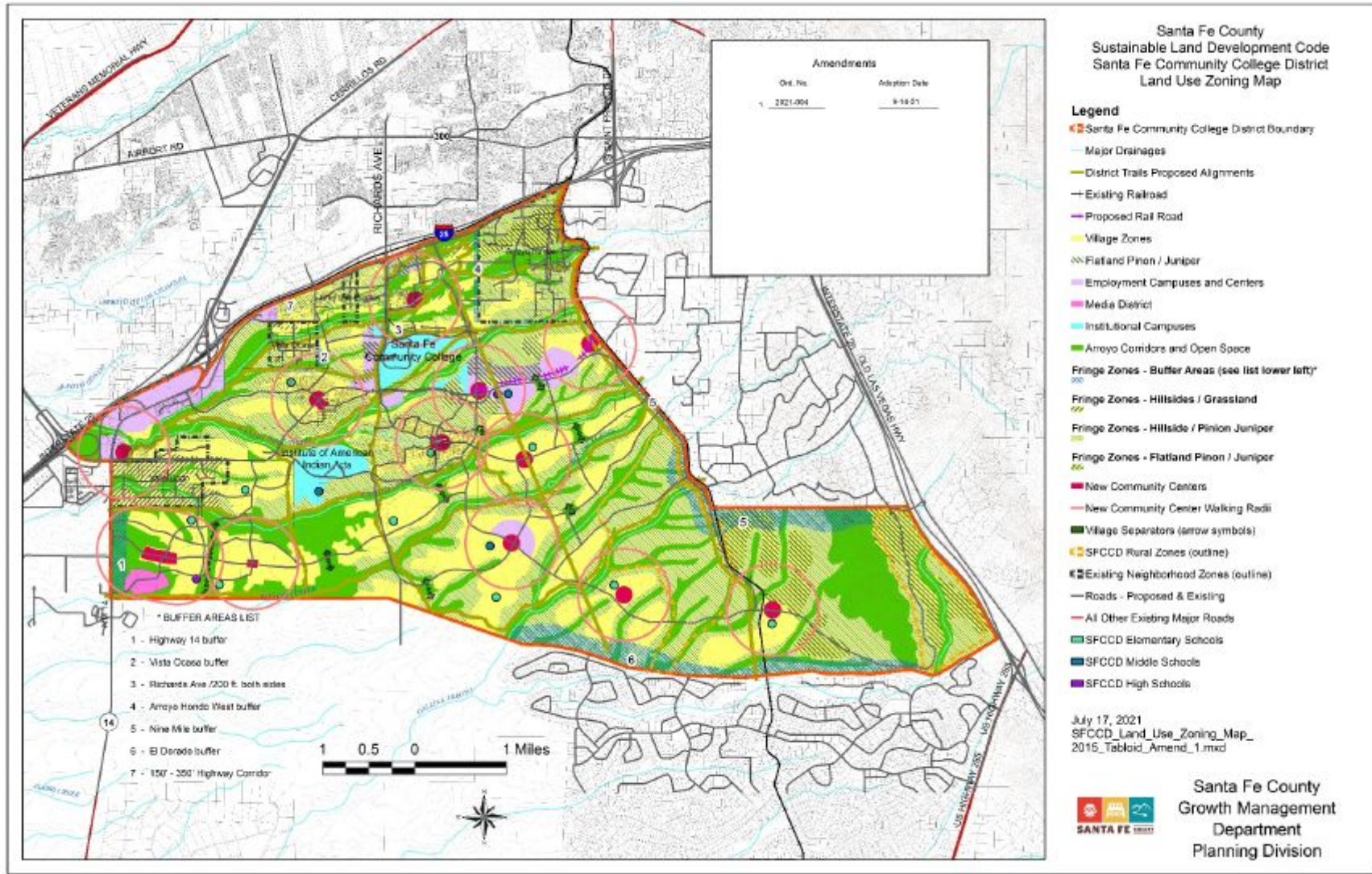
Dec. 29, 2023
SFCCD_Circulation_Map_2015_ through_Amendment_1_Tabloid.mxd



Santa Fe County Growth Management Department Planning Division

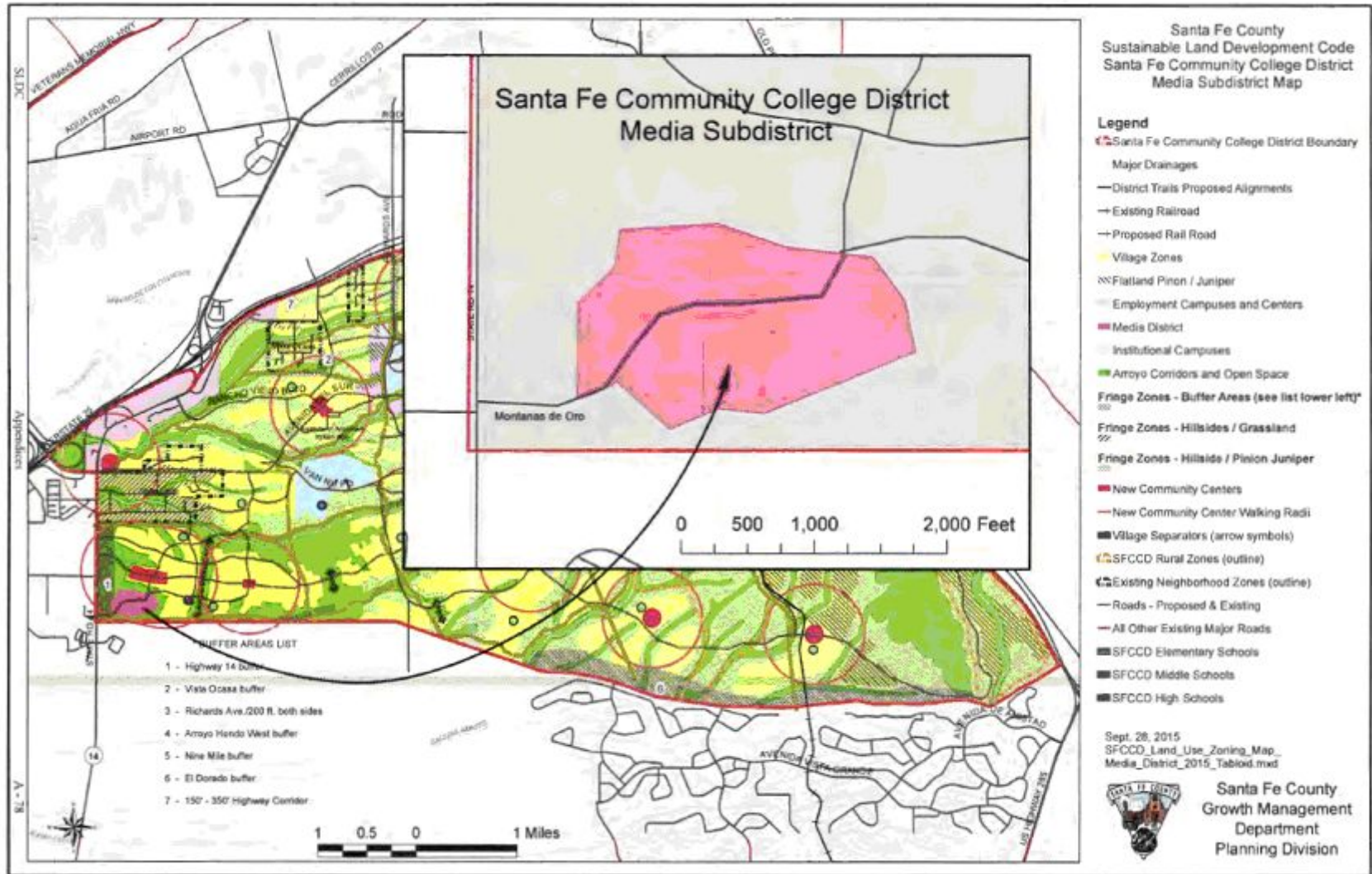
(Ordinance 2021-04 adopted 9/14/21; Ordinance 2024-03 adopted 3/12/2024)

SUSTAINABLE LAND DEVELOPMENT CODE



(Ordinance 2021-04 adopted 9/14/21)

SANTA FE COUNTY CODE



(Ordinance 2016-9 adopted 12/13/16)