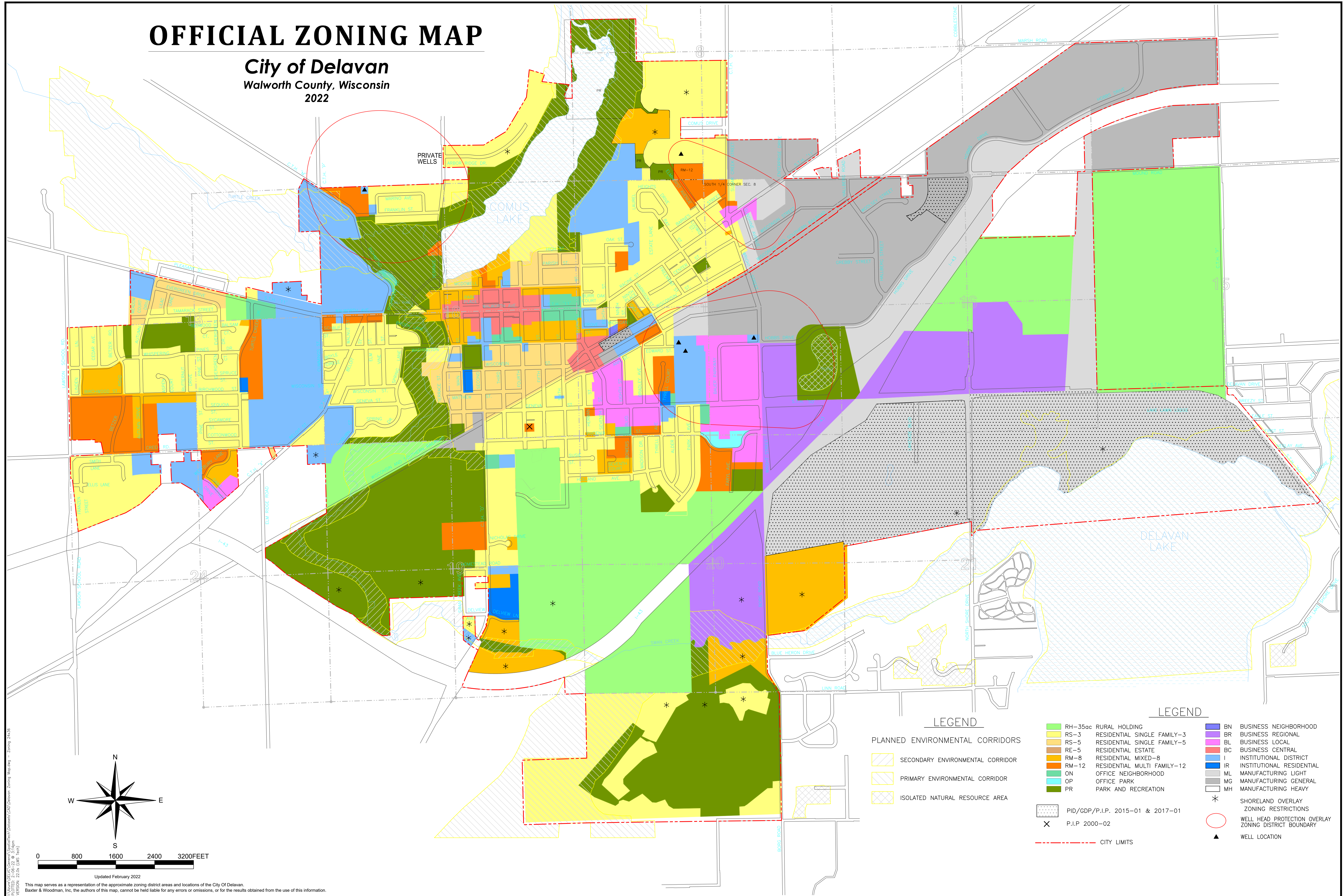
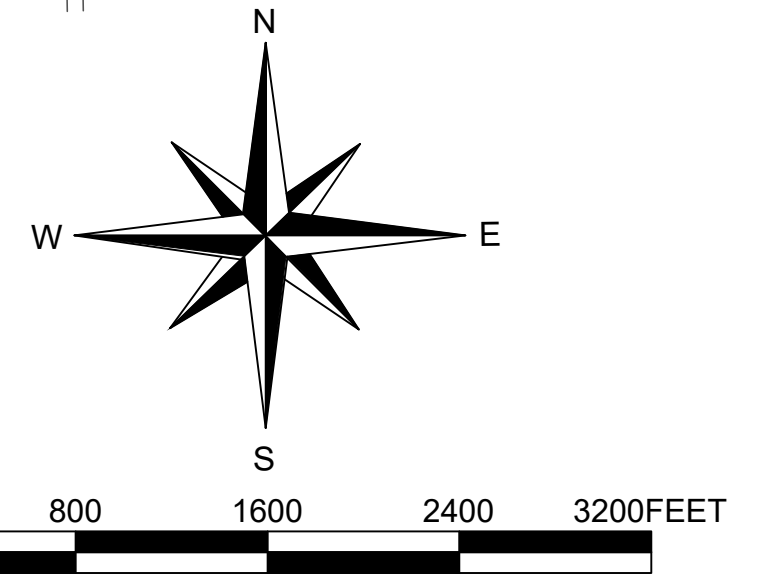


OFFICIAL ZONING MAP

City of Delavan Walworth County, Wisconsin 2022



PLANNED ENVIRONMENTAL CORRIDORS		LEGEND	
	SECONDARY ENVIRONMENTAL CORRIDOR		RH-35cc RURAL HOLDING
	PRIMARY ENVIRONMENTAL CORRIDOR		RS-3 RESIDENTIAL SINGLE FAMILY-3
	ISOLATED NATURAL RESOURCE AREA		RS-5 RESIDENTIAL SINGLE FAMILY-5
			RE-5 RESIDENTIAL ESTATE
			RM-8 RESIDENTIAL MIXED-8
			RM-12 RESIDENTIAL MULTI FAMILY-12
			ON OFFICE NEIGHBORHOOD
			OP OFFICE PARK
			PR PARK AND RECREATION
			BN BUSINESS NEIGHBORHOOD
			BR BUSINESS REGIONAL
			BL BUSINESS LOCAL
			BC BUSINESS CENTRAL
			I INSTITUTIONAL DISTRICT
			IR INSTITUTIONAL RESIDENTIAL
			ML MANUFACTURING LIGHT
			MG MANUFACTURING GENERAL
			MH MANUFACTURING HEAVY
	PID/GDP/P.I.P. 2015-01 & 2017-01		SHORELAND OVERLAY ZONING RESTRICTIONS
	P.I.P. 2000-02		WELL HEAD PROTECTION OVERLAY ZONING DISTRICT BOUNDARY
	CITY LIMITS		WELL LOCATION



WALWORTH COUNTY GIS SERVICES/DELAVAN/CAD/Urban Zoning Mapping - Zoning 2/16/22
 DATE: 2-16-22 @ 3:46pm
 VERSION: 22.0a (DWF, TIF)

Updated February 2022
 This map serves as a representation of the approximate zoning district areas and locations of the City of Delavan.
 Baxter & Woodman, Inc. the authors of this map, cannot be held liable for any errors or omissions, or for the results obtained from the use of this information.