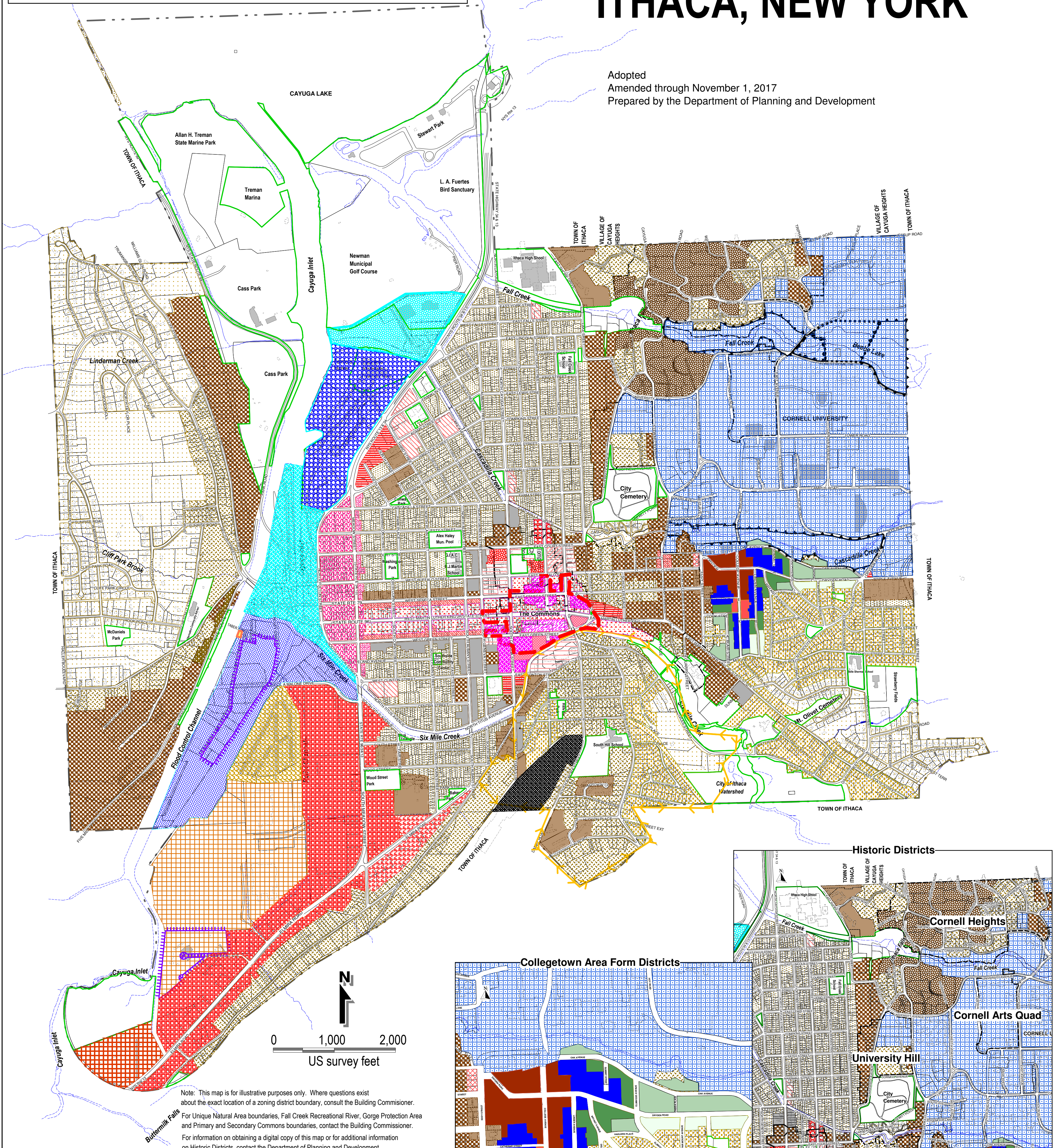
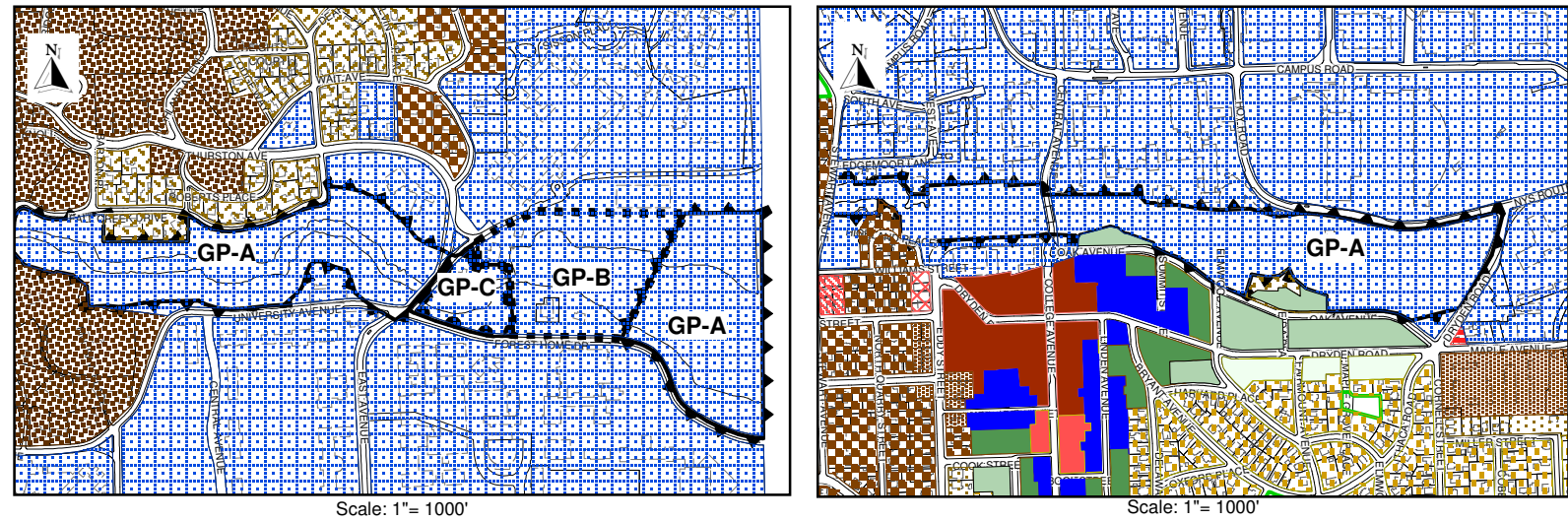


OFFICIAL ZONING MAP OF THE CITY OF ITHACA, NEW YORK

Adopted
Amended through November 1, 2017
Prepared by the Department of Planning and Development

Gorge Protection Zones



Note: This map is for illustrative purposes only. Where questions exist about the exact location of a zoning district boundary, consult the Building Commissioner. For Unique Natural Area boundaries, Fall Creek Recreational River, Gorge Protection Area and Primary and Secondary Commons boundaries, contact the Building Commissioner. For information on obtaining a digital copy of this map or for additional information on Historic Districts, contact the Department of Planning and Development.

Legend for Zoning Districts

R-1a	B-1a	CBD-60	U-1	WEWF	Historic District
R-1b	B-1b	CBD-85	WEDZ-1a	CR-1	GP-A
R-2a	B-2a	CBD-100	WEDZ-1b	CR-2	GP-B
R-2b	B-2b	CBD-120	SW-1	CR-3	GP-C
R-2c	B-2c	CBD-140	SW-2	CR-4	Adult Uses
R-3a	B-2d	MH-1	SW-3	MU-1	SHOD
R-3aa	B-4	C-SU	Newman District	MU-2	SLAUOZ
R-3b	B-5	I-1	Market District	Cherry Art Space PUD	
R-U	CBD-50	P-1	Cherry District		

