

LAND USE REGULATIONS

35 Attachment 2

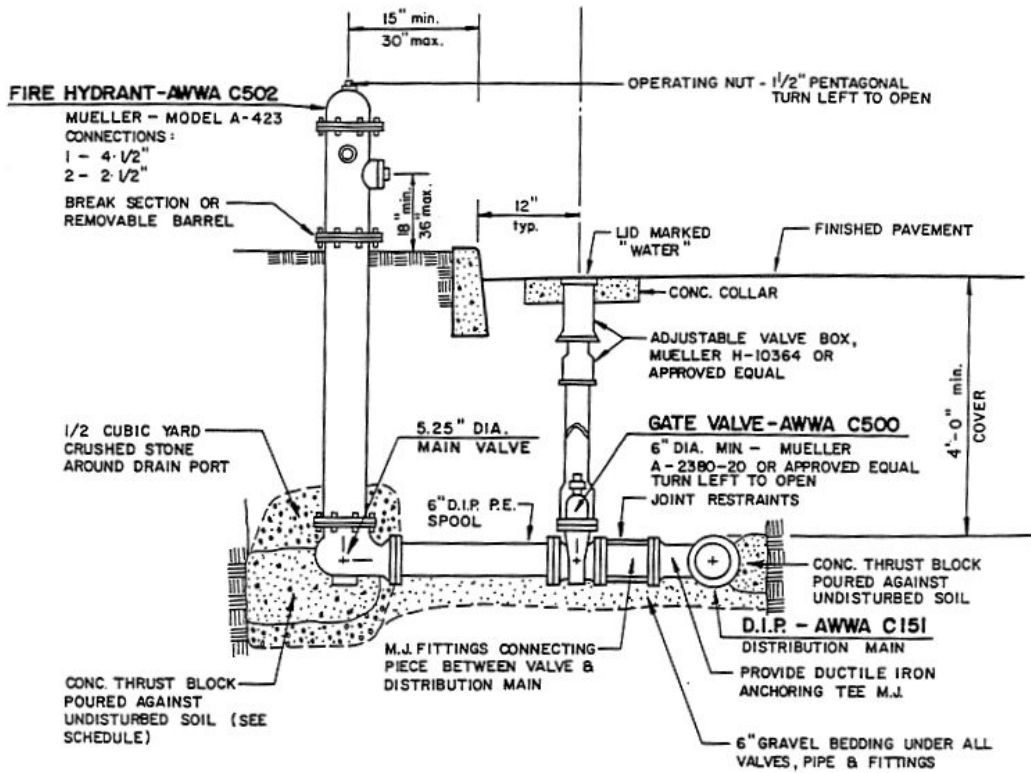
Township of Upper Freehold

APPENDIX TO SECTION 35-500

SCHEDULE II: WATER DISTRIBUTION

FIRE HYDRANT ASSEMBLY
BLOW-OFF HYDRANT ASSEMBLY
BEDDING & INITIAL BACKFILL - D.I.P.
CONCRETE THRUST BLOCKS
JACKED CASING

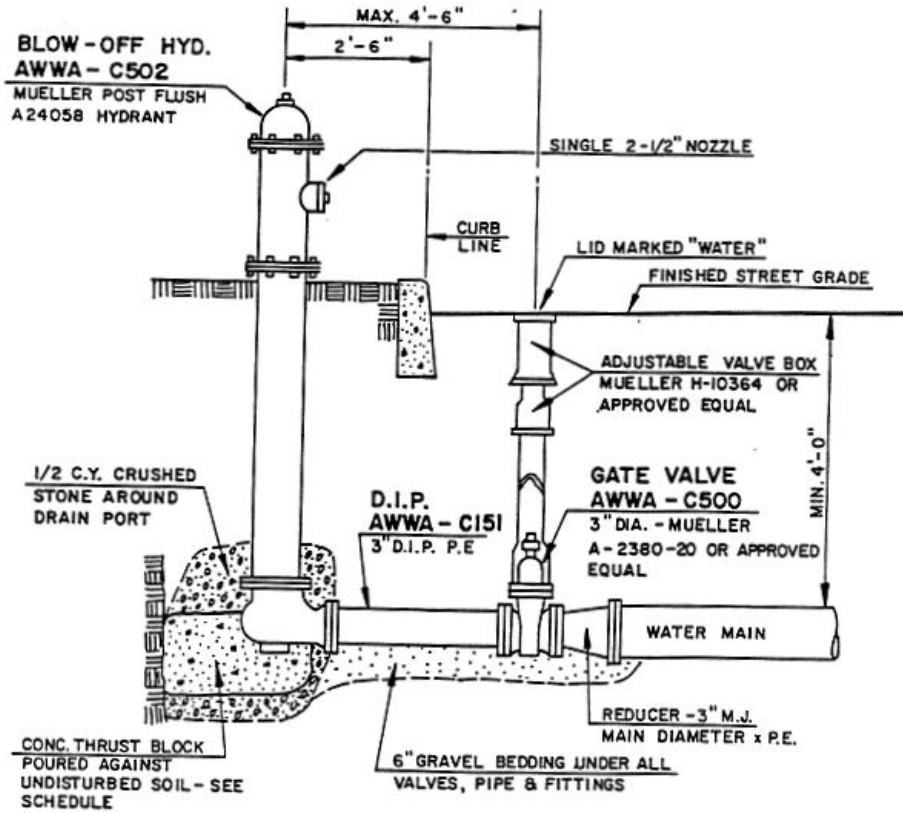
UPPER FREEHOLD CODE



DETAIL:
FIRE HYDRANT ASSEMBLY
 (REF. AWWA C600)
 N.T.S.

STANDARD ENGINEERING DETAIL
 FIRE HYDRANT ASSEMBLY

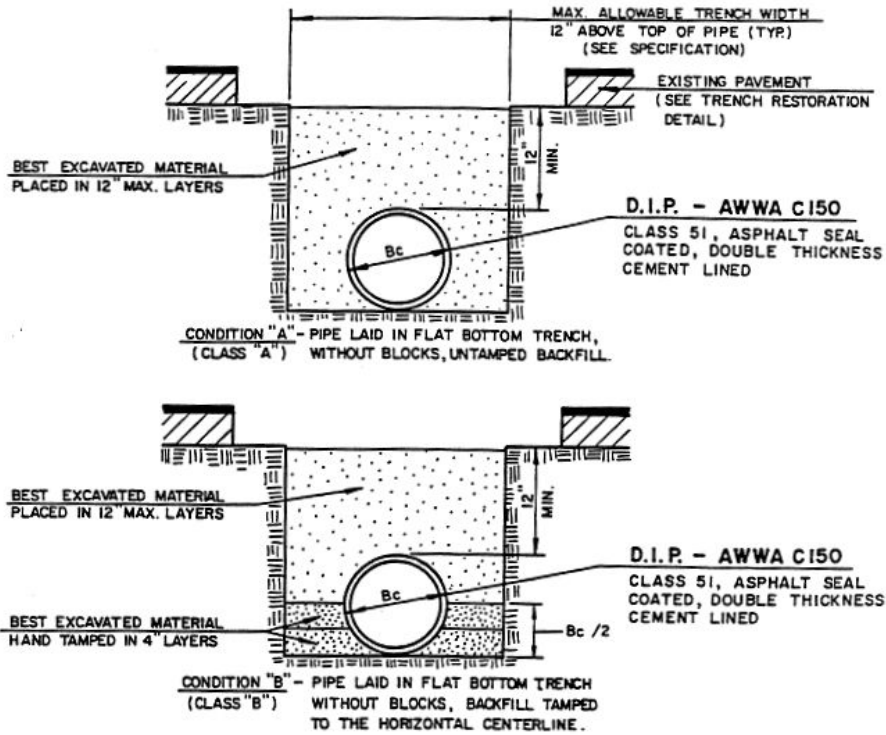
LAND USE REGULATIONS



DETAIL:
BLOW-OFF HYDRANT ASSEMBLY
 N.T.S.

STANDARD ENGINEERING DETAIL
 BLOW-OFF HYDRANT ASSEMBLY




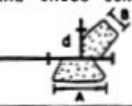
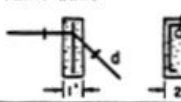
UPPER FREEHOLD CODE



DETAIL:
BEDDING AND INITIAL BACKFILL
FOR IRON PIPE
(REF. AWWA C600)
N.T.S.

STANDARD ENGINEERING DETAIL
BEDDING AND INITIAL BACKFILL
DUCTILE IRON PIPE

LAND USE REGULATIONS

CONTACT AREA - SQUARE FEET						
DIAMETER (d) OF PIPE	6"	8"	10"	12"	16"	20"
HOR. ANGLE: Δ FROM 10° TO 45° 	A = 3.0	5.0	8.0	11.5	18.0	28.0
HOR. ANGLE: Δ FROM 46° TO 90° 	A = 6.0	9.5	13.0	19.0	33.0	51.0
TEE CONNECTION 	A = 4.0	6.5	9.5	13.5	23.0	36.0
LATERAL CROSS CONNECTION 	A = 4.0	6.5	9.5	13.5	23.0	36.0
	B = 7.5	12.5	18.0	25.5	44.0	68.0
VERT. BEND 	AS SHOWN			SEE	NOTE	BELOW

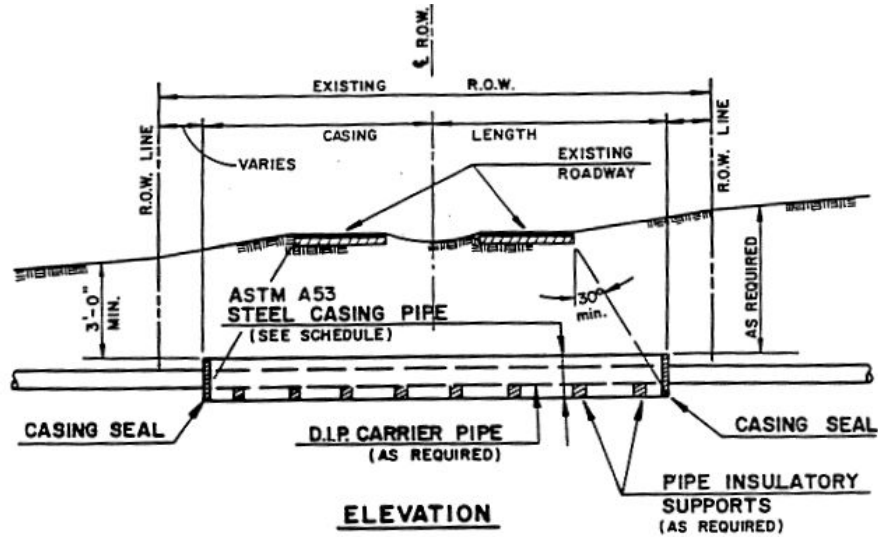
NOTES:

1. ALL HORIZONTAL BENDS SHALL HAVE CONCRETE THRUST BLOCKS WITH MINIMUM BEARING AREAS AGAINST UNDISTURBED SOIL AS SHOWN IN THIS DRAWING.
2. BEARING AREAS ARE BASED UPON UNDISTURBED SOIL WITH A MINIMUM BEARING CAPACITY OF 0.5 TONS PER SQUARE FOOT. FOR A LESSER SOIL BEARING CAPACITY, THESE AREAS SHALL BE INCREASED ACCORDINGLY.
3. THRUST BLOCKS SHALL BE POURED DIRECTLY AGAINST TRENCH WALLS.
4. DETAILS FOR SUPPORTS AND BRACING FOR VERTICAL BENDS FOR 12" DIAMETER OR LARGER SHALL BE APPROVED BY THE AUTHORITY PRIOR TO CONSTRUCTION.
5. NO JOINT SHALL BE COVERED WITH CONCRETE.
6. CONCRETE SHALL BE 2000 P.S.I.

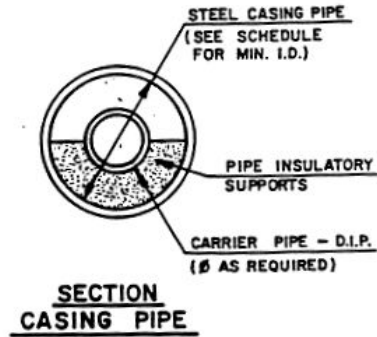
DETAIL:
CONCRETE THRUST BLOCKS
 (REF. AWWA C600)

STANDARD ENGINEERING DETAIL
 CONCRETE THRUST BLOCKS

UPPER FREEHOLD CODE



SCHEDULE OF PIPE SIZES		
CARRIER PIPE - Ø	CASING PIPE	
	MIN. I.D.	MIN. WALL
4"	16"	0.500"
6"	16"	0.500"
8"	18"	0.500"
10"	24"	0.500"
12"	24"	0.500"
16"	30"	0.500"
18"	30"	0.625"
20"	36"	0.625"
24"	36"	0.625"
30"	42"	0.750"



DETAIL:
JACKED CASING
N.T.S.

STANDARD ENGINEERING DETAIL
JACKED CASING