

LAND USE REGULATIONS

35 Attachment 3

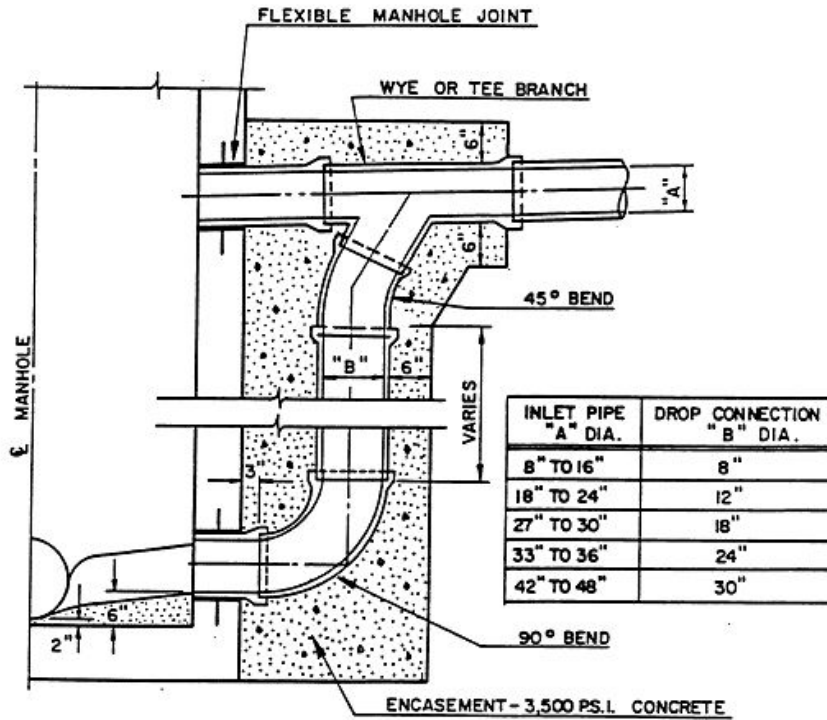
Township of Upper Freehold

APPENDIX TO SECTION 35-500

SCHEDULE III: SANITARY SEWAGE

PRECAST CONCRETE MANHOLE
MANHOLE DROP CONNECTION
INTERNAL DROP CONNECTION TO EXISTING MANHOLE
INTERNAL MANHOLE CHUTE
BEDDING & INITIAL BACKFILL - P.V.C. SEWERAGE
CAST IRON FRAME & COVER
ALUMINUM RUNG
TYPICAL CHANNELING OF MANHOLE INVERT
STD. LATERAL CONNECTION WITH CLEANOUT
DEEP LATERAL CONNECTION
JACKED CASING
SERVICE LATERAL & STUB

LAND USE REGULATIONS



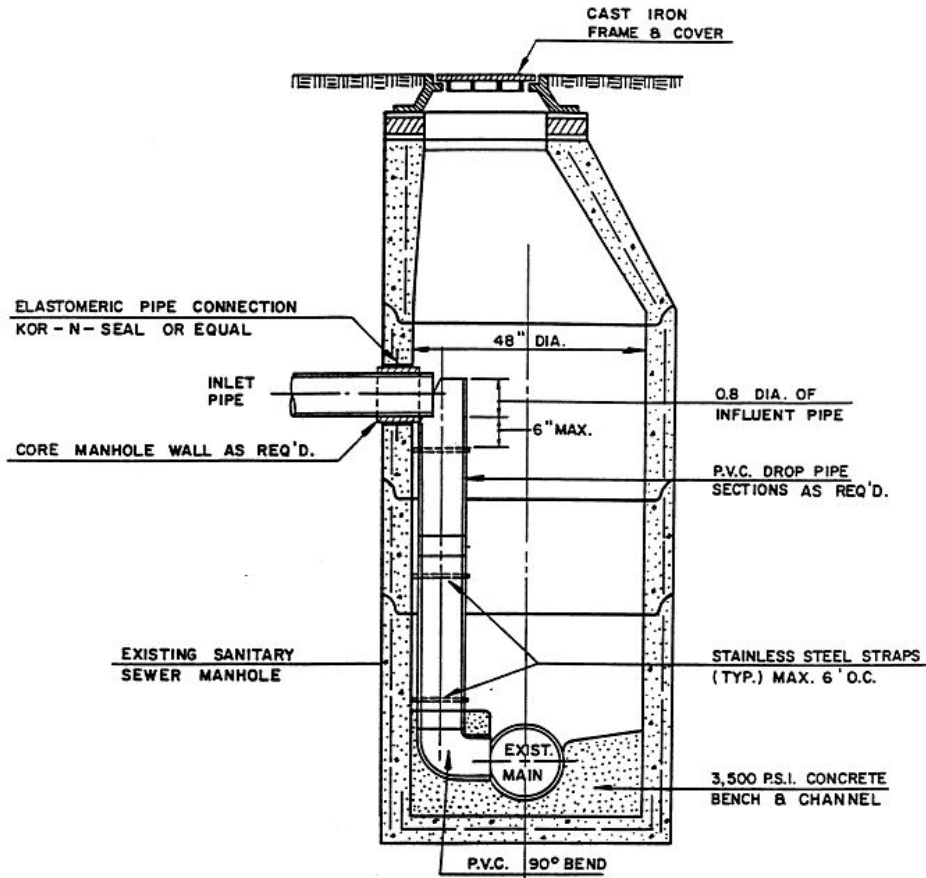
NOTE: DROP PIPE TO BE USED IN ALL CASES WHERE DIFFERENCE BETWEEN INLET INVERT AND LOWEST OUTLET INVERT IS 2 FEET OR GREATER.

DETAIL:
MANHOLE DROP CONNECTION

N.T.S.

STANDARD ENGINEERING DETAIL
MANHOLE DROP CONNECTION

UPPER FREEHOLD CODE

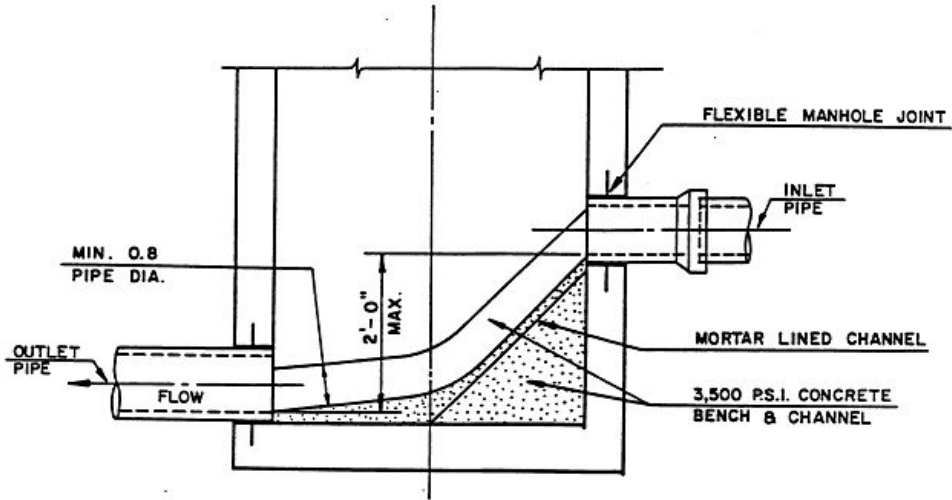


DETAIL:
INTERNAL DROP CONNECTION
TO EXISTING MANHOLE

N.T.S.

STANDARD ENGINEERING DETAIL
INTERNAL DROP CONNECTION
TO EXISTING MANHOLE

LAND USE REGULATIONS

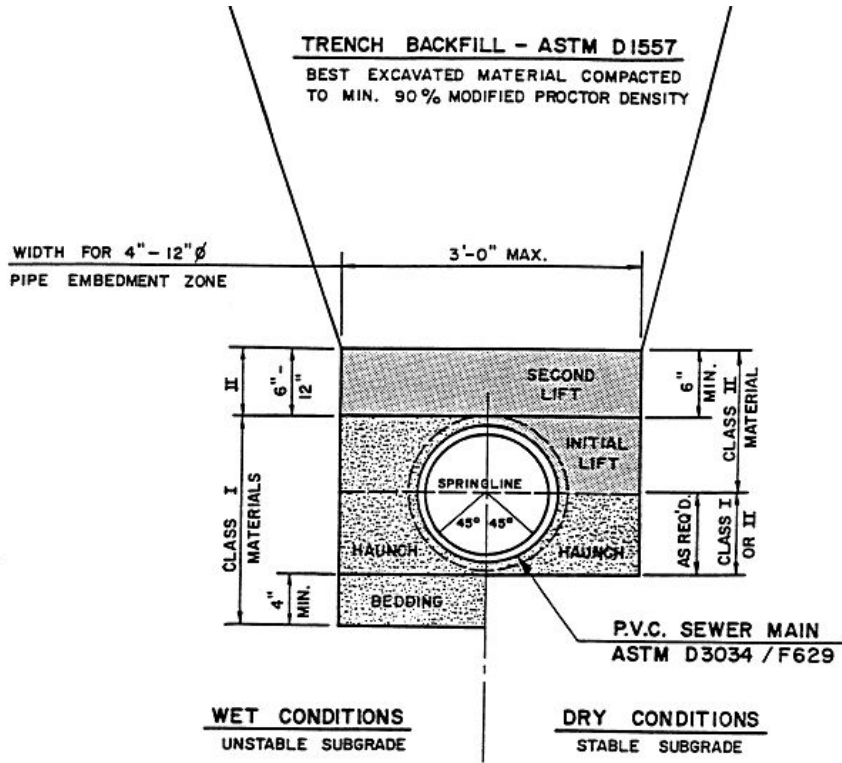


NOTE: MANHOLE CHUTE IS TO BE USED WHERE DIFFERENCE IN INVERT ELEVATIONS BETWEEN INCOMING PIPE AND OUTGOING PIPE IS LESS THAN 2'-0". IF THE DIFFERENCE IS 2'-0" OR GREATER, THEN DROP CONNECTION SHALL BE USED.

DETAIL:
INTERNAL MANHOLE CHUTE
N.T.S.

STANDARD ENGINEERING DETAIL
INTERNAL MANHOLE CHUTE

UPPER FREEHOLD CODE



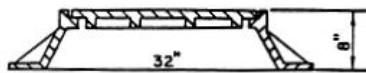
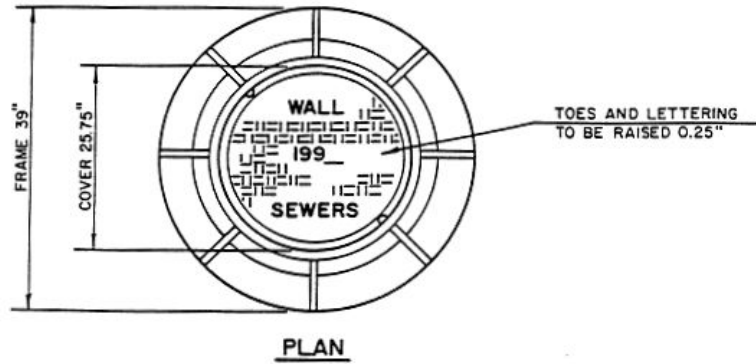
DETAIL:
BEDDING AND INITIAL BACKFILL
P.V.C. SEWERAGE
REF.: ASTM D2321

MATERIAL SPECIFICATIONS

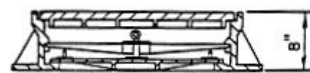
- CLASS I - GRADED STONE
0.25" - 1.25" SIZE
- CLASS II - COURSE SAND & GRAVEL
MAX. 1.25" SIZE
COMPACT 85% M.P.D.

STANDARD ENGINEERING DETAIL
BEDDING AND INITIAL BACKFILL
P.V.C. SEWERAGE

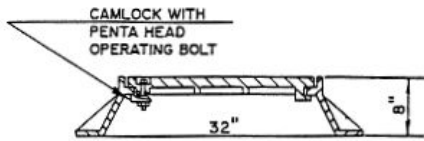
LAND USE REGULATIONS



STANDARD COVER
CAMPBELL FOUNDRY
PATTERN 1203B



WATERTIGHT COVER
CAMPBELL FOUNDRY
PATTERN 6540



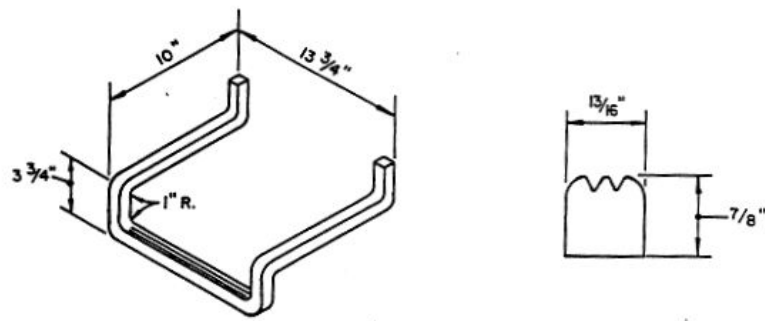
LOCKING COVER
CAMPBELL FOUNDRY
PATTERN 1467

CAST IRON FRAMES & COVERS
PER ASTM A48

DETAIL :
CAST IRON FRAMES & COVERS
N.T.S.

STANDARD ENGINEERING DETAIL
CAST IRON FRAME & COVER

UPPER FREEHOLD CODE



NOTES:

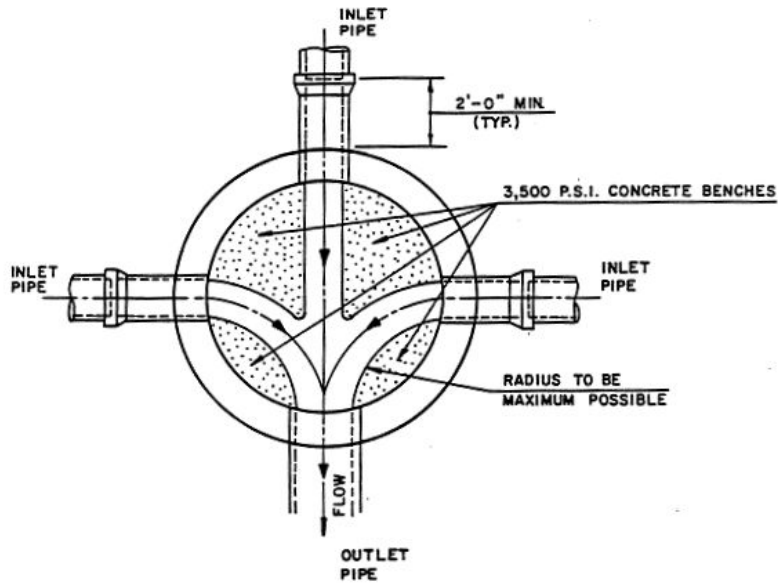
1. EMBEDDED PORTION COATED WITH HEAVY BITUMINOUS COATING, KOPPERS OR EQUAL.
2. TO BE USED IN CATCH BASINS AND MANHOLES OF DEPTHS EXCEEDING 4'-0".

DETAIL:
ALUMINUM RUNG

N.T.S.

STANDARD ENGINEERING DETAIL
ALUMINUM RUNG

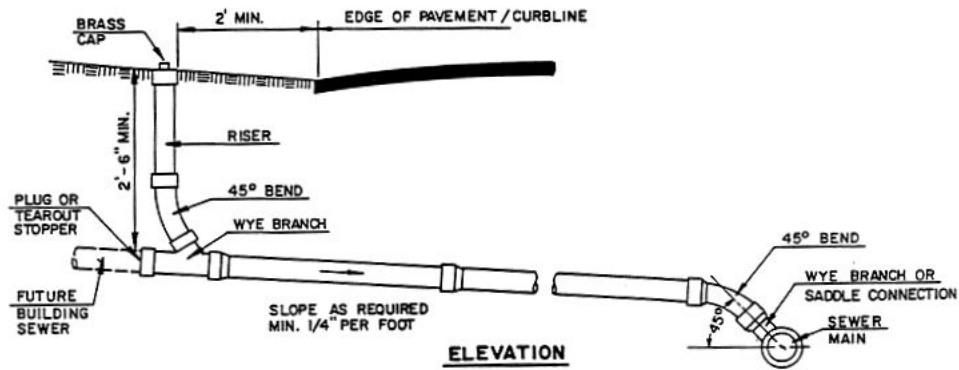
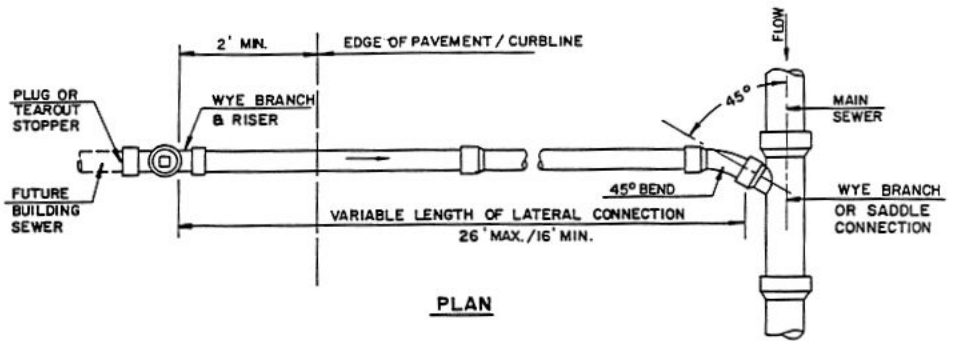
LAND USE REGULATIONS



DETAIL :
TYPICAL CHANNELING OF MANHOLE INVERT
N.T.S.

STANDARD ENGINEERING DETAIL
TYPICAL CHANNELING OF MANHOLE INVERT

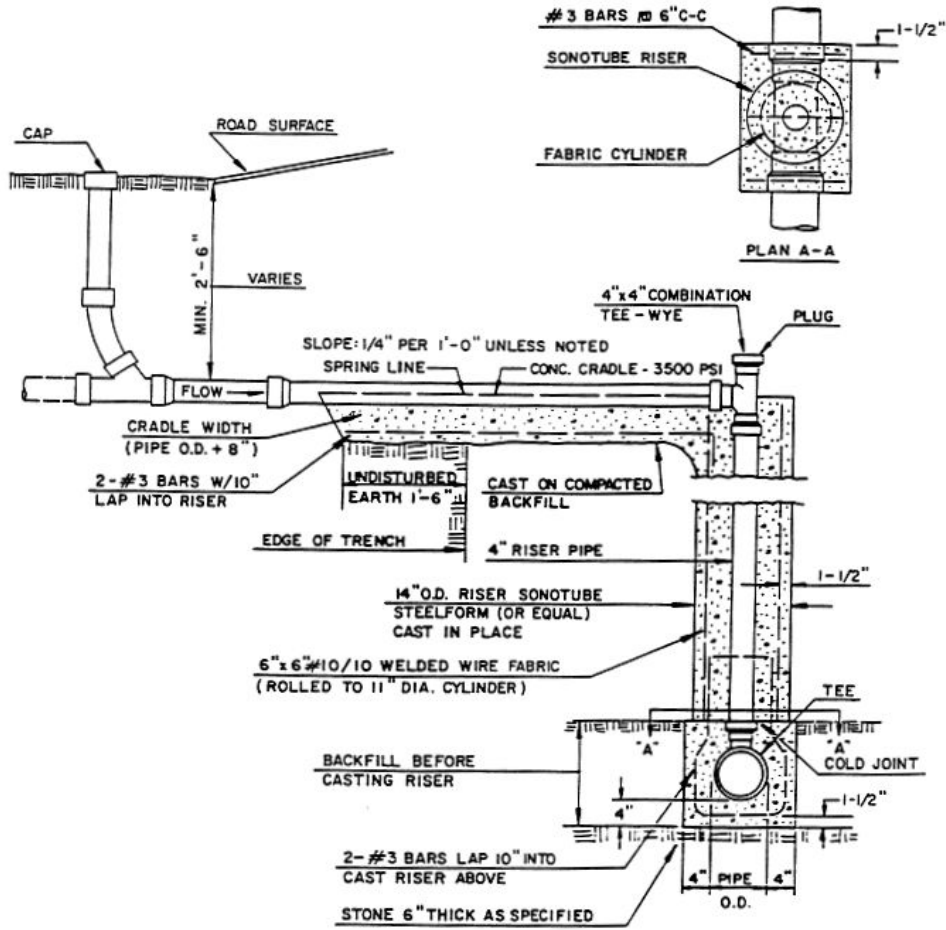
UPPER FREEHOLD CODE



DETAIL :
STANDARD LATERAL CONNECTION WITH CLEANOUT
SEWER DEPTH - 10' OR LESS
N.T.S.

STANDARD ENGINEERING DETAIL
STD. LATERAL CONNECTION WITH CLEANOUT

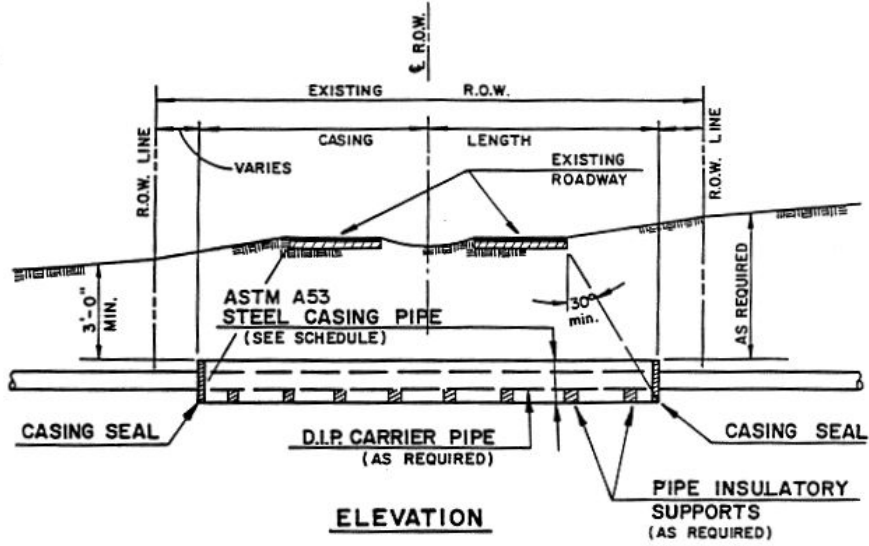
LAND USE REGULATIONS



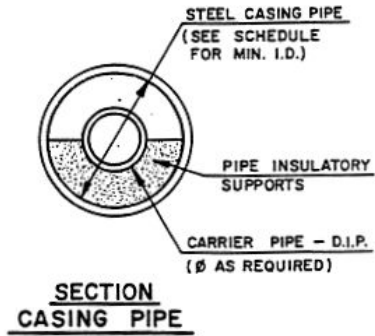
DETAIL:
DEEP LATERAL CONNECTION & RISER WITH CLEANOUT
 SEWER DEPTH - EXCEEDS 10'

STANDARD ENGINEERING DETAIL
 DEEP LATERAL CONNECTION

UPPER FREEHOLD CODE



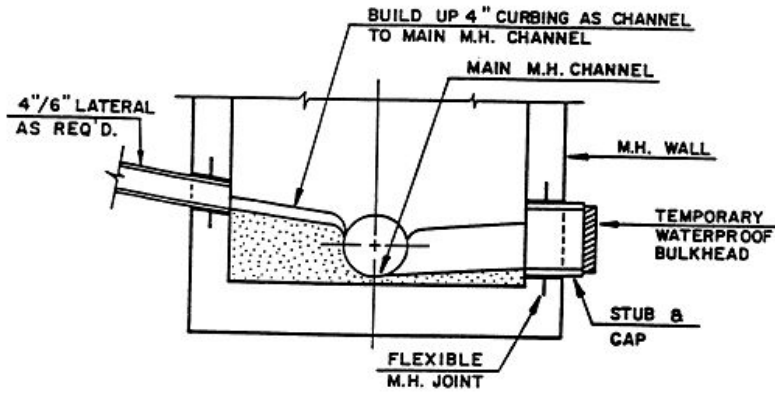
SCHEDULE OF PIPE SIZES		
CARRIER PIPE - Ø	CASING PIPE	
	MIN. I.D.	MIN. WALL
4"	16"	0.500"
6"	16"	0.500"
8"	18"	0.500"
10"	24"	0.500"
12"	24"	0.500"
16"	30"	0.500"
18"	30"	0.625"
20"	36"	0.625"
24"	36"	0.625"
30"	42"	0.750"



DETAIL:
JACKED CASING
N.T.S.

STANDARD ENGINEERING DETAIL
JACKED CASING

LAND USE REGULATIONS



DETAIL :
SERVICE LATERAL & STUB

N.T.S.

STANDARD ENGINEERING DETAIL
SERVICE LATERAL & STUB