

This is the Official Zoning Map of the Town of Wawayanda, last Amended by Local Law #5 of 2021 on 4 of November 2021, and certified as accurate on 3 November, 2022. Signed copies are on file at the Orange County Department of Planning and at the Municipal Clerk's office.

# Town of Wawayanda

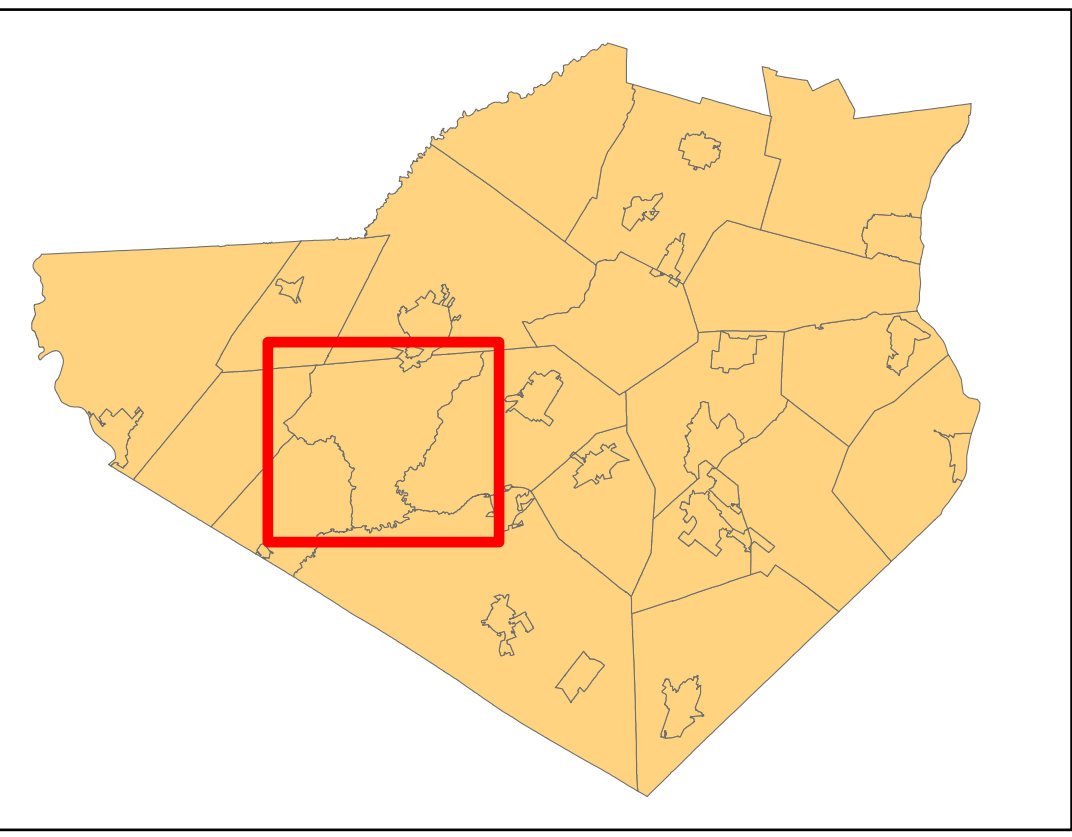
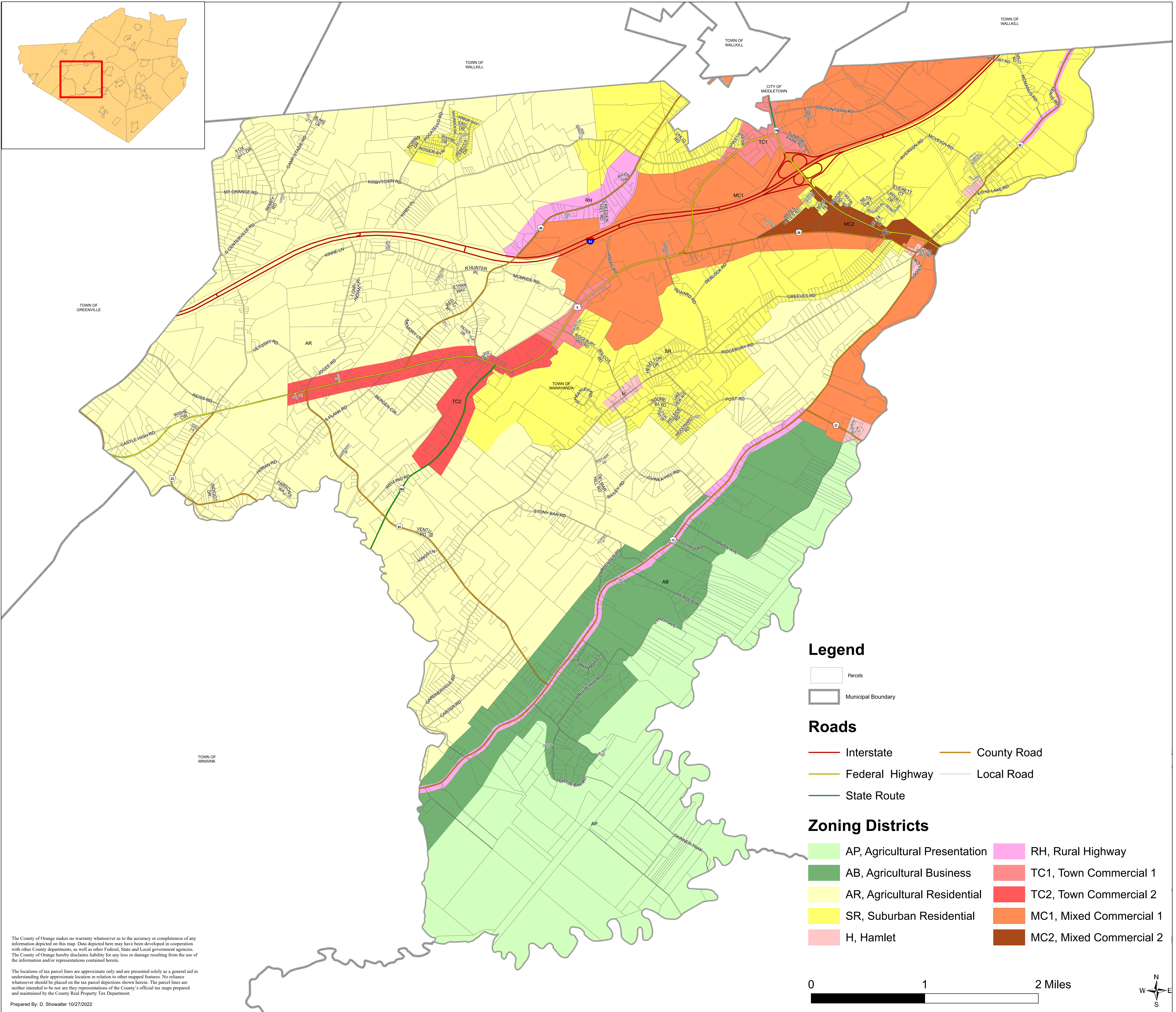
## Orange County, New York

### Official Zoning Map



Steven H. Neuhaus  
County Executive

Date of Last Amendment: LL# of 5 of 2021, adopted 4 November 2021



#### Legend

- Parcels
- Municipal Boundary

#### Roads

- Interstate
- County Road
- Federal Highway
- Local Road
- State Route

#### Zoning Districts

- AP, Agricultural Presentation
- AB, Agricultural Business
- AR, Agricultural Residential
- SR, Suburban Residential
- H, Hamlet
- RH, Rural Highway
- TC1, Town Commercial 1
- TC2, Town Commercial 2
- MC1, Mixed Commercial 1
- MC2, Mixed Commercial 2

The County of Orange makes no warranty whatsoever as to the accuracy or completeness of any information depicted on this map. Data depicted here may have been developed in cooperation with other County departments, as well as other Federal, State and Local government agencies. The County of Orange hereby disclaims liability for any loss or damage resulting from the use of the information and/or representations contained herein.

The locations of tax parcel lines are approximate only and are presented solely as a general aid in understanding their approximate location in relation to other mapped features. No reliance whatsoever should be placed on the tax parcel depictions shown herein. The parcel lines are neither intended to be nor are they representations of the County's official tax maps prepared and maintained by the County Real Property Tax Department.

Prepared By: D. Showalter 10/27/2022

