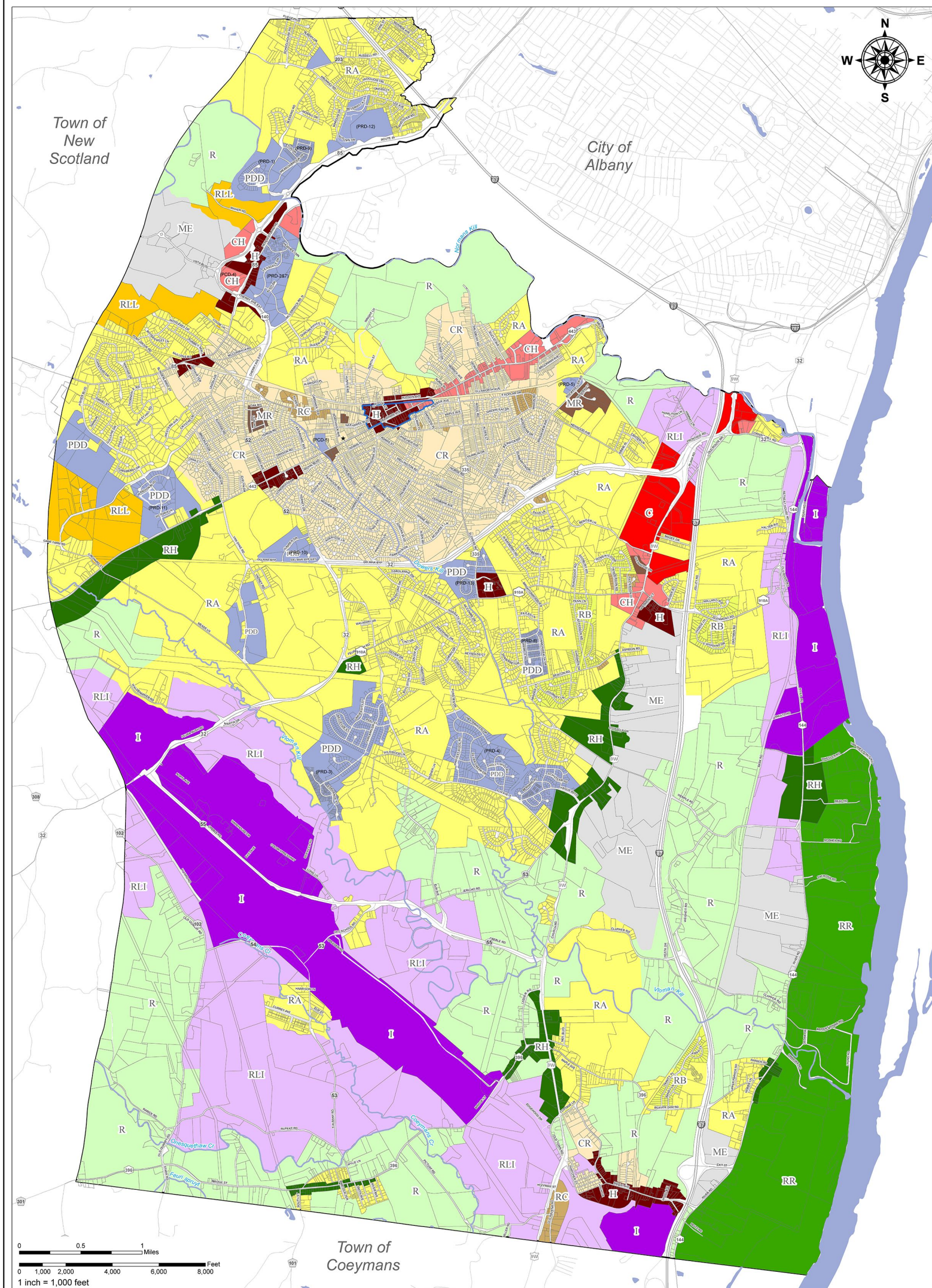


ZONING

128 Attachment 3

Town of Bethlehem

Zoning Map of the Town of Bethlehem, New York



Effective August 24, 2005
 Amended September 1, 2006
 Amended October 17, 2008
 Amended June 23, 2010
 Amended July 1, 2013
 Amended March 23, 2015
 Amended April 27, 2016

This map is computer generated using data from the Town of Bethlehem, New York and is intended only for reference, planning and presentation purposes. Documentation of data sources, specifications and limitations are available upon request from the Town GIS Coordinator. This map is not intended for, and should not be used for, establishing boundaries, property lines, location of objects or provide any other information typically needed for construction of any other purpose when engineering plans or land surveys are required.

* (PRD-#): FORMER ZONING CLASSIFICATION

Legend	
Zoning: 2016 by Local Law #2	
	COMMERCIAL HAMLET (CH)
	CORE RESIDENTIAL (CR)
	GENERAL COMMERCIAL (C)
	HAMLET (H)
	HEAVY INDUSTRIAL (I)
	MIXED ECONOMIC DEVELOPMENT (ME)
	MULTI-FAMILY (MR)
	PLANNED DEVELOPMENT DISTRICT (PDD)
	RESIDENTIAL A (RA)
	RESIDENTIAL B (RB)
	RESIDENTIAL C (RC)
	RESIDENTIAL LARGE LOT (RLL)
	RURAL (R)
	RURAL HAMLET (RH)
	RURAL LIGHT INDUSTRIAL (RLI)
	RURAL RIVERFRONT (RR)
	DELAWARE AVE HAMLET OVERLAY (DAH)