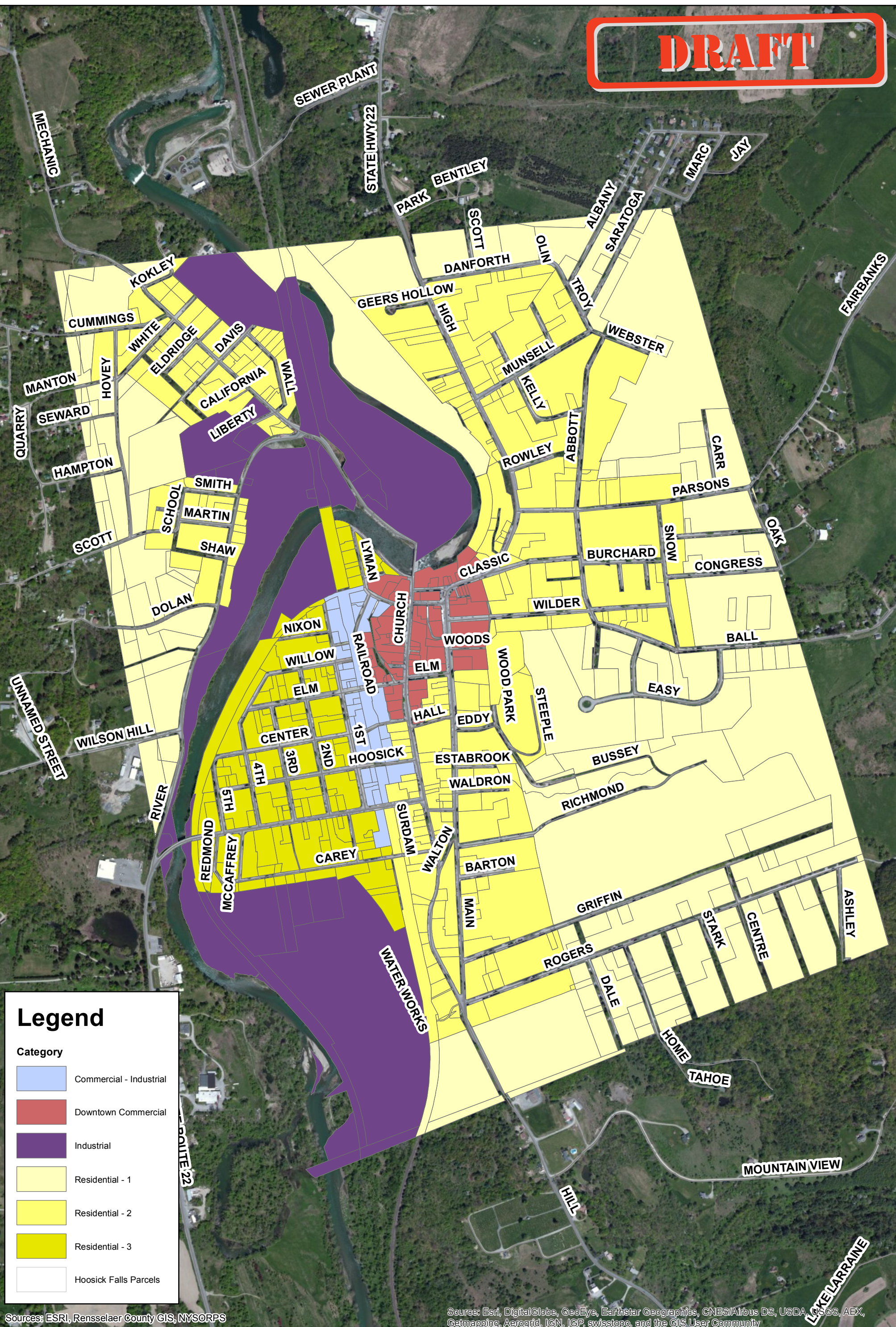









DRAFT

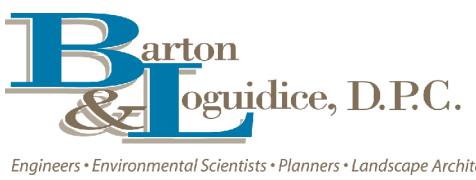


Legend

Category	
	Commercial - Industrial
	Downtown Commercial
	Industrial
	Residential - 1
	Residential - 2
	Residential - 3
	Hoosick Falls Parcels

Sources: ESRI, Rensselaer County GIS, NYSORPS

Source: Esri, DigitalGlobe, GeoEye, Earthstar Geographics, CNES/Airbus DS, USDA, USGS, AEX, Getmapping, Aerogrid, IGN, IGP, swisstopo, and the GIS User Community



1 inch = 750 feet

Village of Hoosick Falls
Existing Zoning Map
 Rensselaer County January 2015 New York

Figure
 1
 Project
 No.
 1677.001