

ZONING

180 Attachment 3

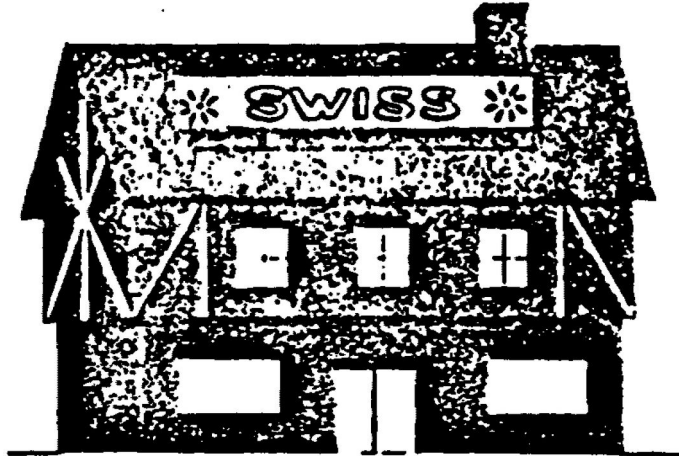
Village of Potsdam

Attachment II-B

Sign Diagrams

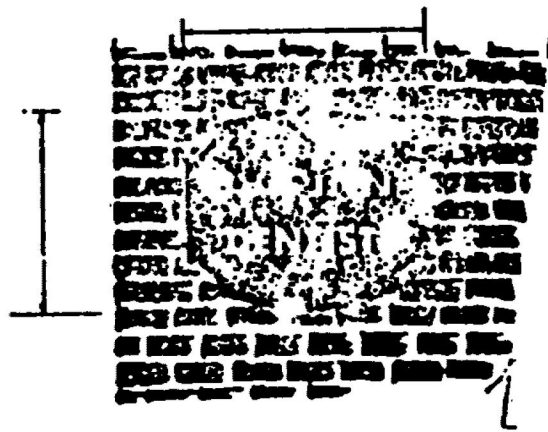
[Amended 6-17-2013 by L.L. No. 5-2013]

Roof Sign



MAX. AREA CANNOT EXCEED 80 sq. ft.
NOR 40% OF OCCUPIED ROOF AREA

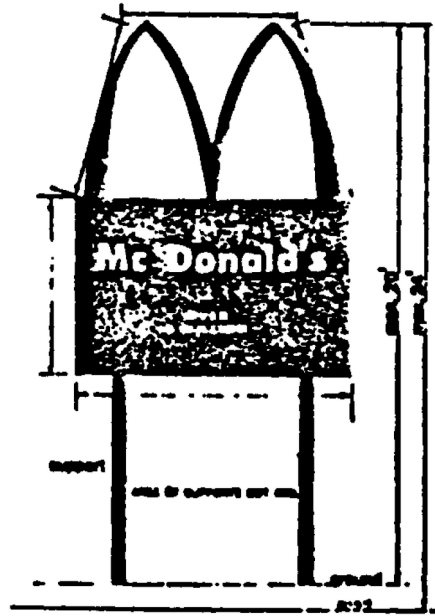
Wall Sign



PROFESSIONAL RESIDENCE - OFFICE
MAX. AREA NOT TO EXCEED 8 sq. ft.

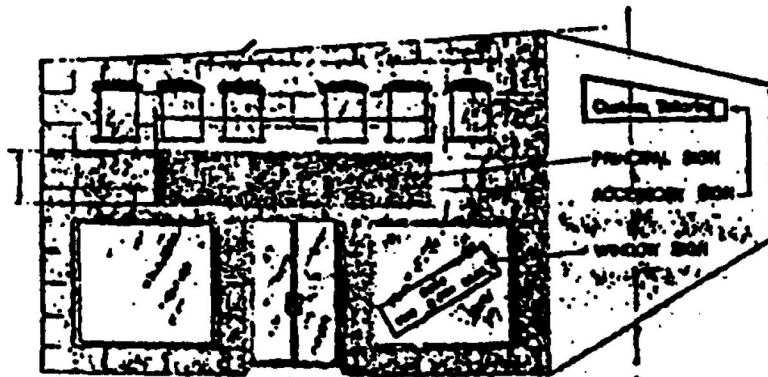
POTSDAM CODE

Free-Standing Sign



MAX. AREA - 80 sq. ft.
AREA SQUARE: THE RESULTANT AREA CIRCUMSCRIBED
BY ONE OR MORE SIMPLE GEOMETRIC FORMS
30' MIN. SETBACK FROM STREET LINE
10' MIN. SETBACK FROM ANY OTHER LOT LINE
100' MIN. DIST. BETWEEN SIGNS OF 40 sq. ft. OR MORE

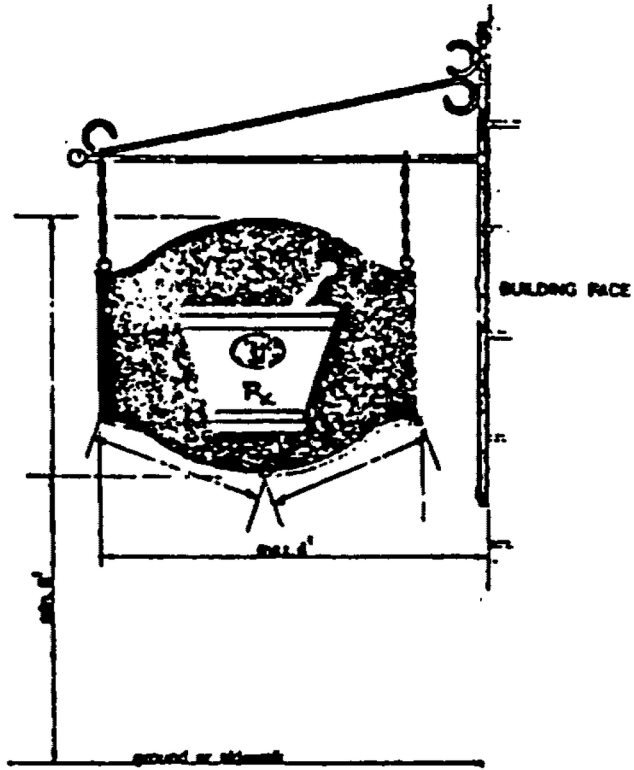
Principal, Accessory & Window Signs



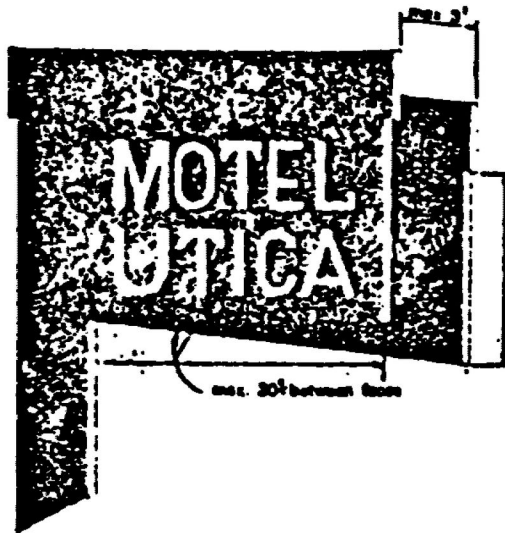
PRINCIPAL SIGN AREA: 1 sq. ft. per LINEAL FOOT OF BUILDING FRONTAGE
NOT TO EXCEED 60 sq. ft.
ACCESSORY SIGN AREA: NOT TO EXCEED 5% OF PRINCIPAL SIGN AREA
NOT ALLOWED IN REAR SIDE OF LOT
WINDOW SIGN AREA: NOT TO EXCEED 5% OF WINDOW AREA
ALL ALLOWED SIGN - 30 DAY

ZONING

Projecting Sign



Double-Face Sign

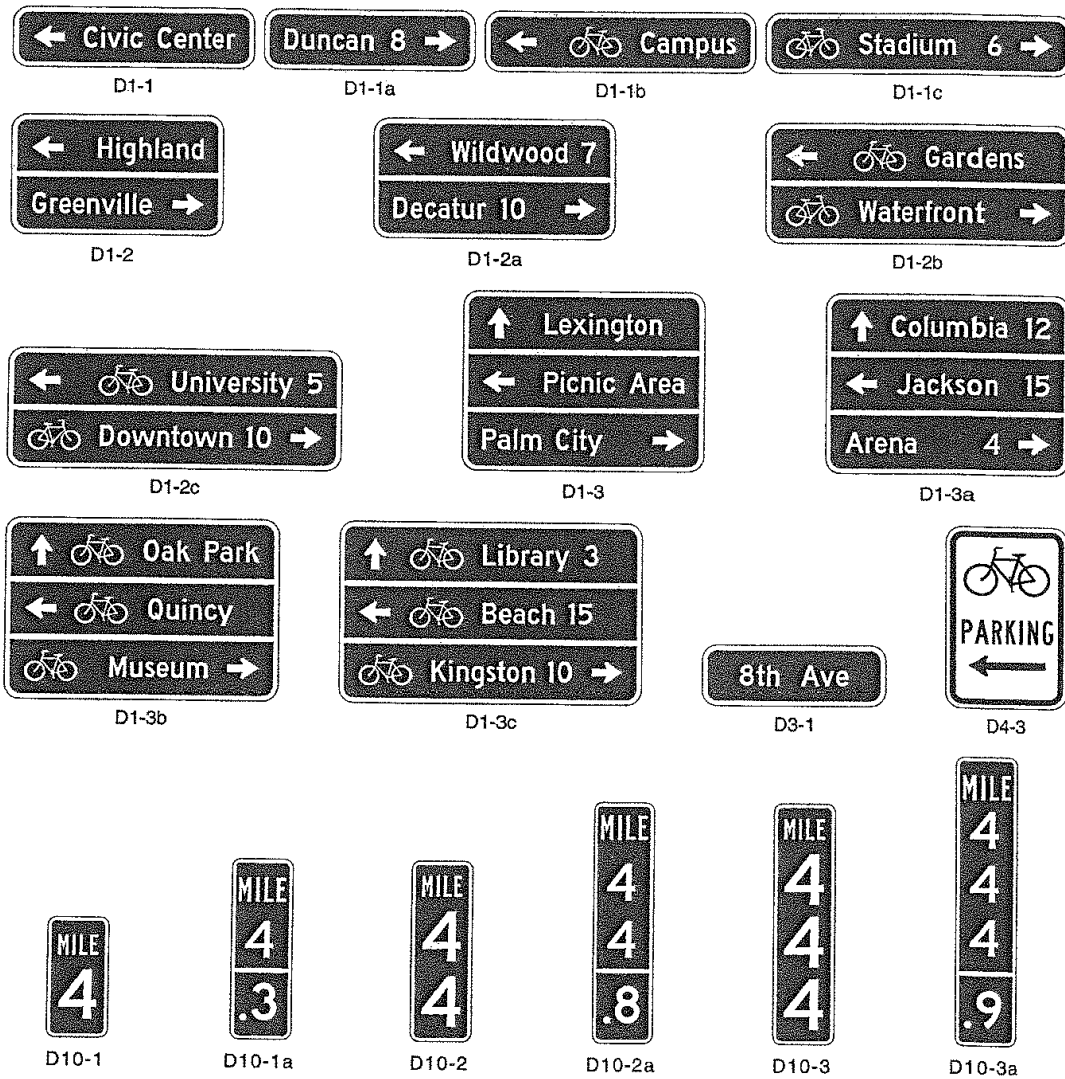


CONSIDERED TO BE ONE SIGN
MAX. AREA - 60 sq. ft. per FACE

POTSDAM CODE

Village of Potsdam

Figure 9B-4. Guide Signs and Plaques for Bicycle Facilities



- 09 The bicycle symbol should be to the left of the destination legend.
- 10 If several individual name signs are assembled into a group, all signs in the assembly should have the same horizontal width.
- 11 Because of their smaller size, Bicycle Destination signs should not be used as a substitute for vehicular designation signs when the message is also intended to be seen by motorists.
Support:
- 12 Figure 9B-5 shows an example of the signing for the beginning and end of a designated bicycle route on a shared-use path. Figure 9B-6 shows an example of signing for an on-roadway bicycle route. Figure 9B-7 shows examples of signing and markings for a shared-use path crossing.