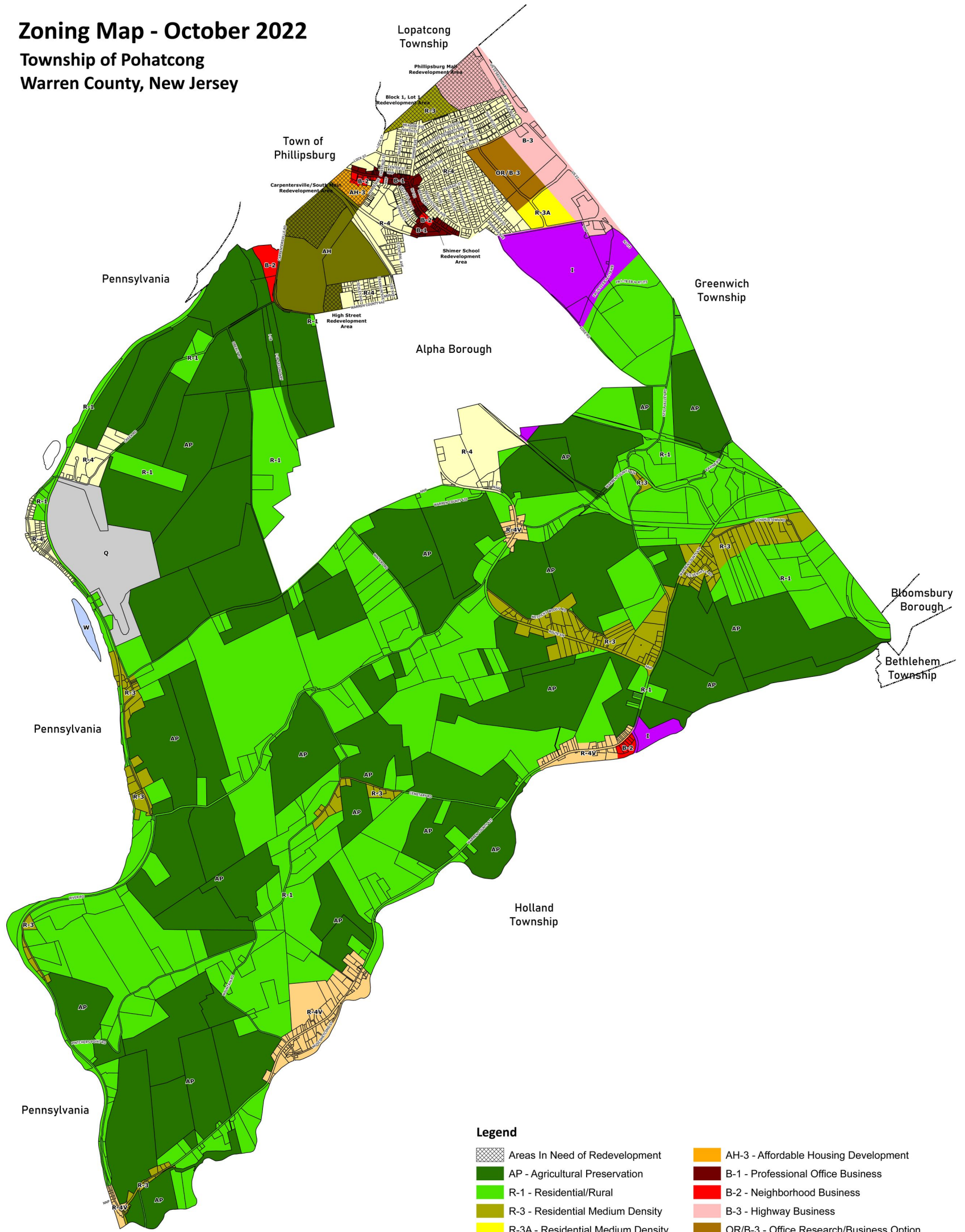


ZONING

285 Attachment 15

**Zoning Map**  
[Amended 3-21-2023 by Ord. No. 23-07]

**Zoning Map - October 2022**  
Township of Pohatcong  
Warren County, New Jersey



**Legend**

- |   |  |
|---|--|
| Areas In Need of Redevelopment          | AH-3 - Affordable Housing Development    |
| AP - Agricultural Preservation          | B-1 - Professional Office Business       |
| R-1 - Residential/Rural                 | B-2 - Neighborhood Business              |
| R-3 - Residential Medium Density        | B-3 - Highway Business                   |
| R-3A - Residential Medium Density       | OR/B-3 - Office Research/Business Option |
| R-4 - Residential High Density          | I - Industrial                           |
| R-4V - Residential High Density Village | W - Water Related Recreation             |
| AH - Affordable Housing Development     | Q - Quarry                               |

Map Prepared by:  
James T. Kyle, PP/AICP  
Township Planner  
PO Box 236  
Hopewell, NJ 08525  
jkyle@kylemcmanus.com  
Data Sources:  
NJOIT OGIS



Map Scale = 1:14,400  
1"=1,200'

