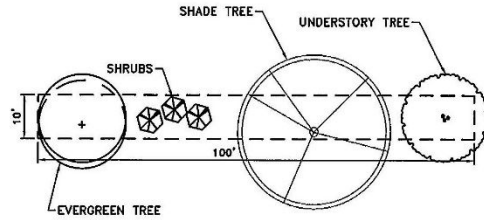


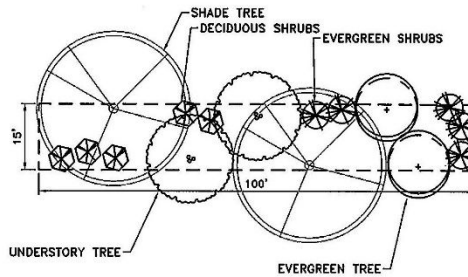
ZONING

195 Attachment 2

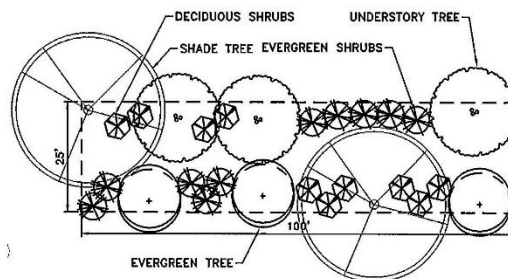
Exhibit A
Buffer Yard Details
[Added 2-13-2023 By Ord. No. 237]



- BUFFER YARD A**
(MINOR)
- (1) CANOPY TREE (35')
 - (1) UNDER-STORY TREE (20')
 - (3) SHRUBS (6')
 - (1) EVERGREEN TREE (20')



- BUFFER YARD B**
(MODERATE)
- (2) CANOPY TREES (35')
 - (2) UNDER-STORY TREES (20')
 - (5) DECIDUOUS SHRUBS (6')
 - (5) EVERGREEN SHRUBS (6')
 - (2) EVERGREEN TREES (15')



- BUFFER YARD C**
(MAJOR)
- (2) CANOPY TREES (35')
 - (3) UNDER-STORY TREES (20')
 - (10) DECIDUOUS SHRUBS (6')
 - (10) EVERGREEN SHRUBS (6')
 - (3) EVERGREEN TREE (15')

- NOTES:**
1. PLANT SIZES AT THE TIME OF INSTALLATION SHALL BE IN ACCORDANCE WITH ORDINANCE SECTION 195-137.1
 2. HEIGHT AND WIDTH IN CHART ARE ESTIMATED PROJECTIONS FOR SUSTAINED GROWTH ASSUMING SUFFICIENT MAINTENANCE
 3. BUFFER PLANS ARE DIAGRAMMATIC AND USE APPROXIMATE PLANT SIZES BY TYPE AS LISTED
 4. PLANT SPECIES SHOULD BE SELECTED THAT ARE APPROPRIATE FOR THEIR LOCATION AND DESIRED PURPOSE

Brighton Township
 ZONING CODE
 SEC.195-137.1

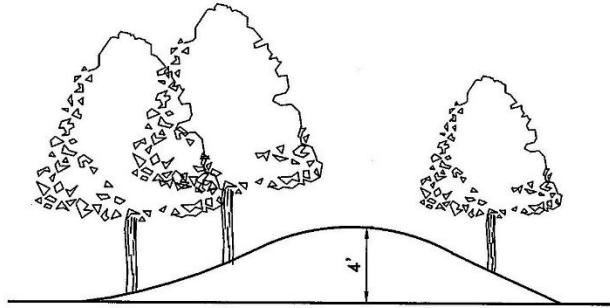
EXHIBIT A - BUFFER YARD DETAILS

SCALE: N.T.S.
 DATE: April 2016 FILE: Buffer Yard Details.dwg

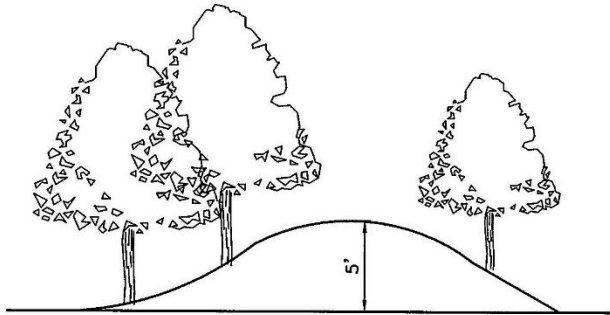


Brighton Township
 Beaver County, Pennsylvania
 1300 Brighton Road
 Beaver, PA 15009

BRIGHTON CODE



B1 - 4' EARTH BERM
N. T. S.



B2 - 5' EARTH BERM
N. T. S.

Brighton Township
ZONING CODE
SEC.195-137.1

Exhibit A - B1 4' Earth Berm / B2 5' Earth Berm

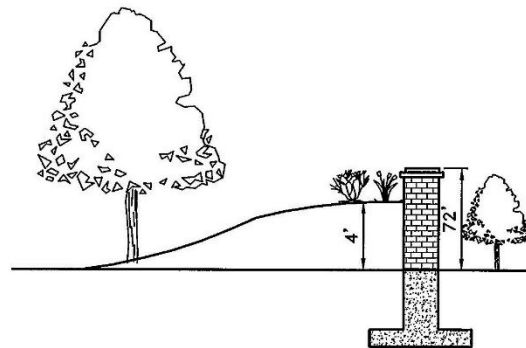
SCALE: N.T.S.

DATE: April 2016 FILE: Fence_Details.dwg

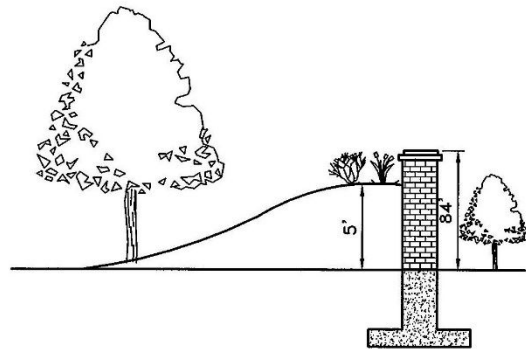


Brighton Township
Beaver County, Pennsylvania
1300 Brighton Road
Beaver, PA 15009

ZONING



BW1 - 4' EARTH BERM WITH 6' MASONRY WALL
N. T. S.



BW2 - 5' EARTH BERM WITH 7' MASONRY WALL
N. T. S.

Brighton Township
ZONING CODE
SEC.195-137.1

EXHIBIT A - BW1 AND BW2 Berm with Masonry Wall

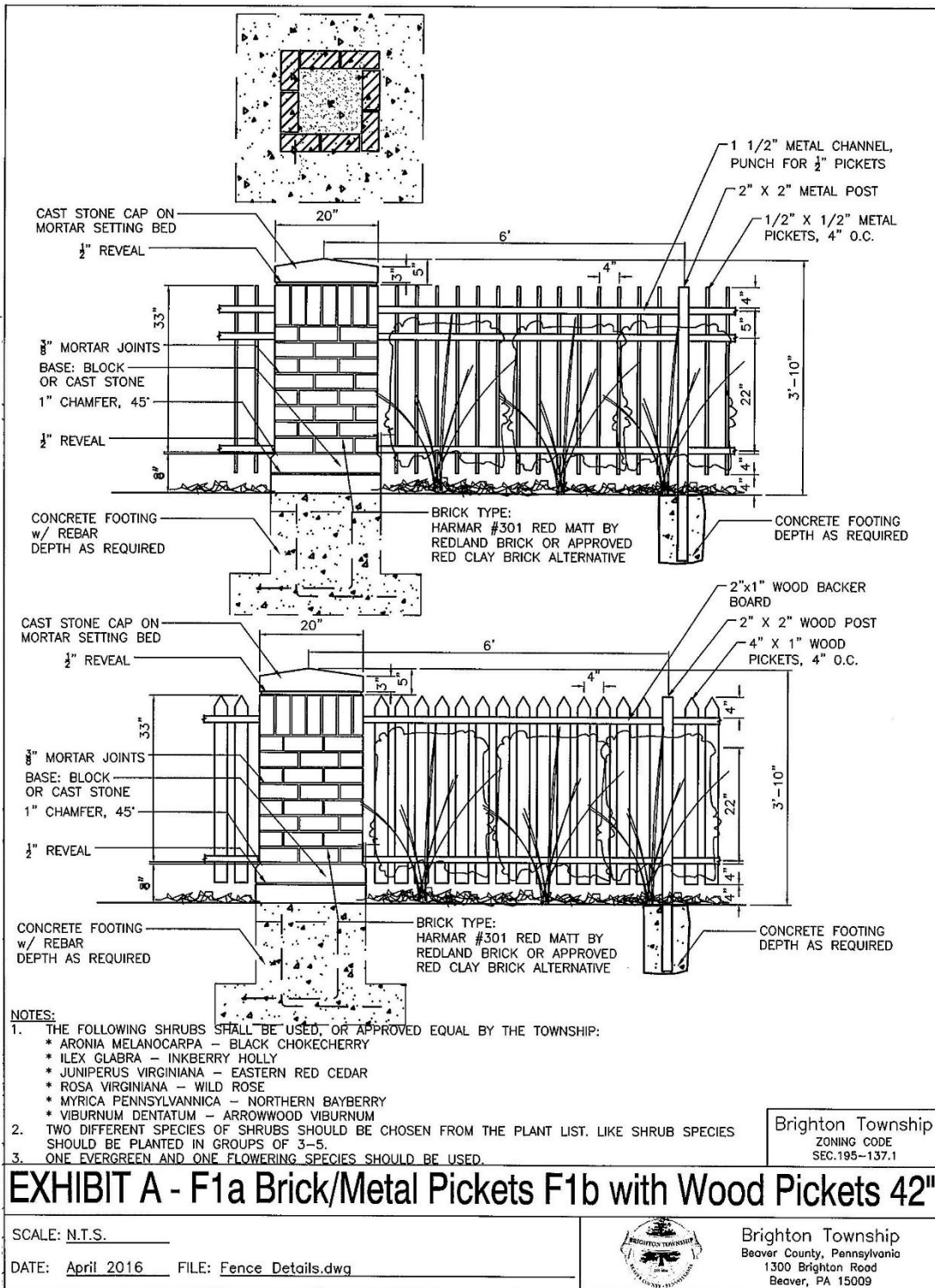
SCALE: N.T.S. _____

DATE: April 2016 FILE: Fence Details.dwg _____

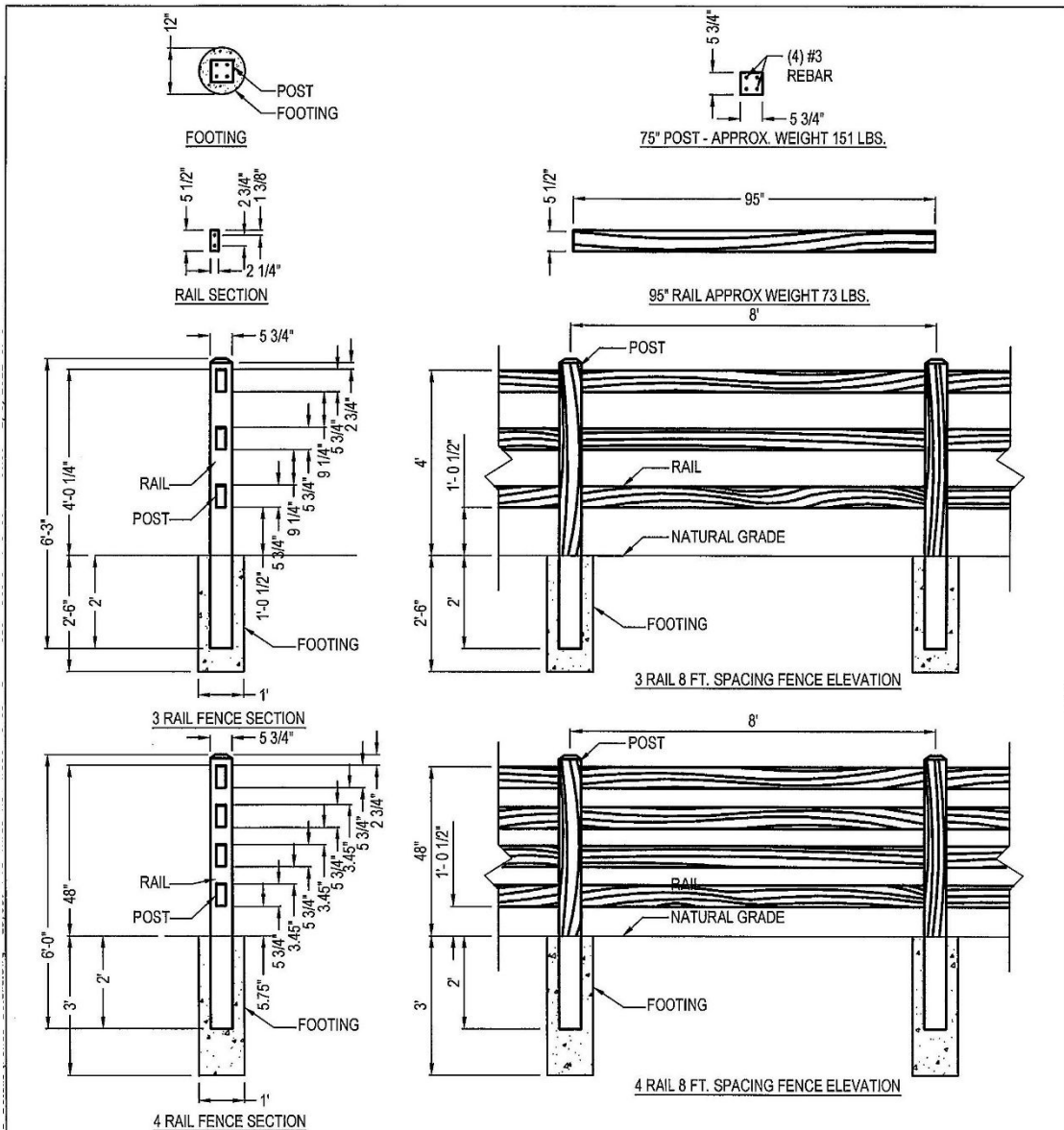


Brighton Township
Beaver County, Pennsylvania
1300 Brighton Road
Beaver, PA 15009

BRIGHTON CODE



ZONING



- NOTES:**
1. ALL CONCRETE TO BE MINIMUM COMPRESSIVE STRENGTH OF 4000 PSI AT 28 DAYS.
 2. PRIMARY REINFORCEMENT TO BE ASLAN #3 SYNTHETIC REBAR REINFORCEMENT.
 3. SECONDARY REINFORCEMENT TO BE MICROFIBER REINFORCEMENT.
 4. INSTALLATION TO BE COMPLETED IN ACCORDANCE WITH MANUFACTURER'S SPECIFICATIONS.
 5. DO NOT SCALE DRAWING.
 6. THIS DRAWING IS INTENDED FOR USE BY ARCHITECTS, ENGINEERS, CONTRACTORS, CONSULTANTS AND DESIGN PROFESSIONALS FOR PLANNING PURPOSES ONLY. THIS DRAWING MAY NOT BE USED FOR CONSTRUCTION.

Brighton Township
 ZONING CODE
 SEC.195-137.1

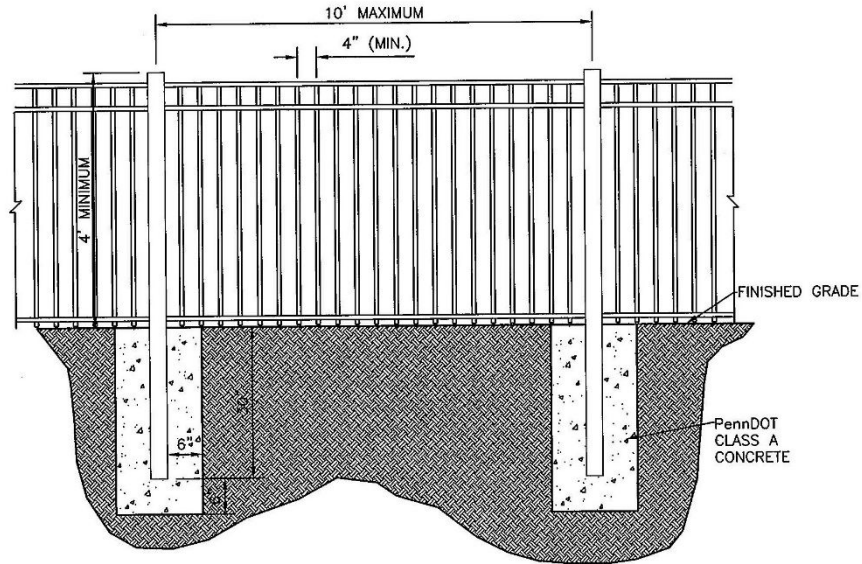
EXHIBIT A - F1c 48" Three Rail Split Rail Fence / F1d Four Rail

SCALE: N.T.S.
 DATE: April 2016 FILE: Fence Details.dwg



Brighton Township
 Beaver County, Pennsylvania
 1300 Brighton Road
 Beaver, PA 15009

BRIGHTON CODE



NOTES:

1. FURNISH AND INSTALL 4' HIGH ALUMINUM POST FENCING WITH ALUMINUM CROSS MEMBER AND PICKETS.
2. FURNISH AND INSTALL 4' HIGH (2)-5' (10' WIDE TOTAL) SWING GATE WITH ALUMINUM POSTS, CROSS MEMBER, AND PICKETS.

Brighton Township
ZONING CODE
SEC.195-137.1

F2 48" Metal Fence

SCALE: N.T.S.

DATE: April 2016 FILE: Fence Details.dwg



Brighton Township
Beaver County, Pennsylvania
1300 Brighton Road
Beaver, PA 15009

ZONING

EXAMPLE – ARCHITECTURAL MASONRY WALL/FENCING TO SCREEN PARKING AREAS
OR DEFINE STREET EDGE

72"

96"

NOTE:
ALTERNATE FENCE MATERIALS AND DESIGNS MAY BE APPROVED IF RECOMMENDED
BY THE PLANNING COMMISSION AND APPROVED BY THE BOARD OF SUPERVISORS

Brighton Township
ZONING CODE
SEC.195-137.1

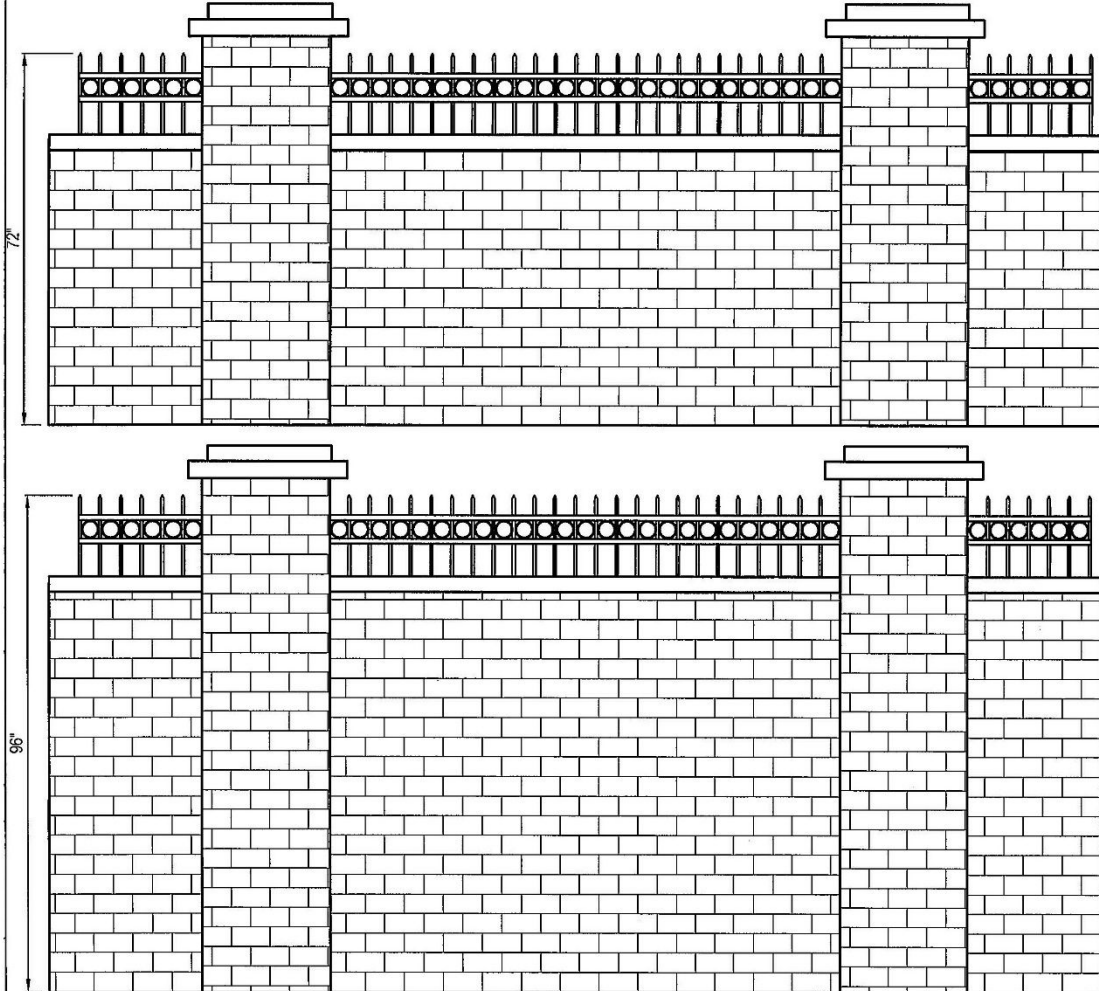
EXHIBIT A - F3a 6' Masonry and Wrought Iron F3b 8'

SCALE: N.T.S.
DATE: April 2016 FILE: Fence Details.dwg

Brighton Township
Beaver County, Pennsylvania
1300 Brighton Road
Beaver, PA 15009

BRIGHTON CODE

EXAMPLE – ARCHITECTURAL MASONRY WALL/FENCING TO SCREEN PARKING AREAS
OR DEFINE STREET EDGE



NOTE:

ALTERNATE FENCE MATERIALS AND DESIGNS MAY BE APPROVED IF RECOMMENDED
BY THE PLANNING COMMISSION AND APPROVED BY THE BOARD OF SUPERVISORS

Brighton Township
ZONING CODE
SEC.195-137.1

EXHIBIT A - F4a 6' Masonry and Wrought Iron F4b 8'

SCALE: N.T.S. _____

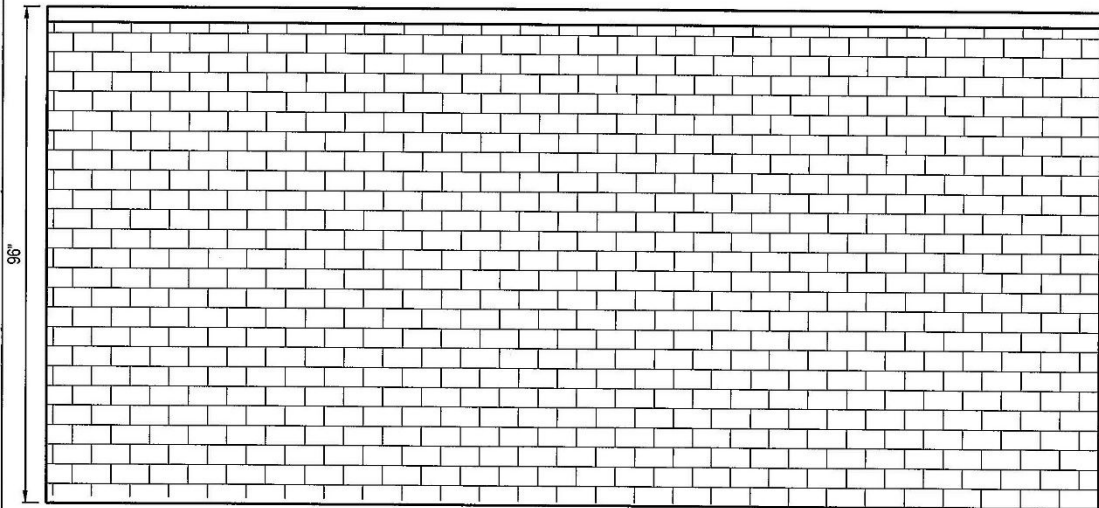
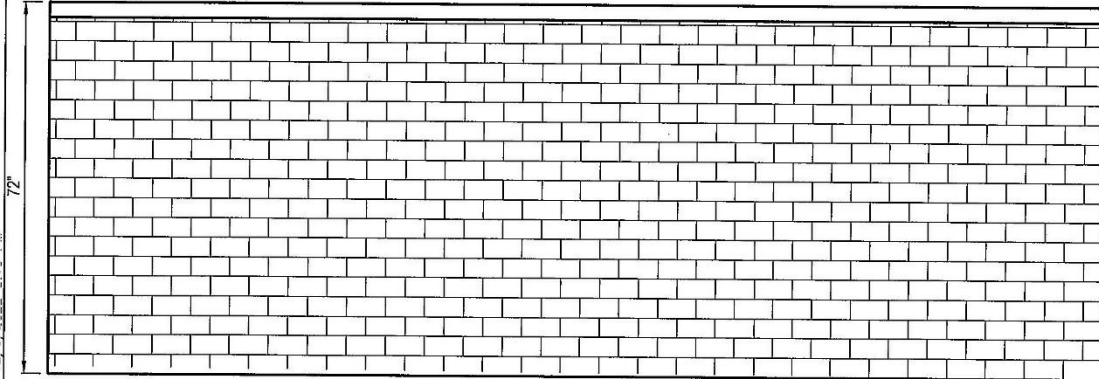
DATE: April 2016 FILE: Fence_Details.dwg



Brighton Township
Beaver County, Pennsylvania
1300 Brighton Road
Beaver, PA 15009

ZONING

EXAMPLE - ARCHITECTURAL MASONRY WALL/FENCING TO SCREEN PARKING AREAS
OR DEFINE STREET EDGE



NOTE:

ALTERNATE FENCE MATERIALS AND DESIGNS MAY BE APPROVED IF RECOMMENDED
BY THE PLANNING COMMISSION AND APPROVED BY THE BOARD OF SUPERVISORS

Brighton Township
ZONING CODE
SEC.195-137.1

EXHIBIT A - F5a 6' Masonry (Brick or Stone) F5b 8'

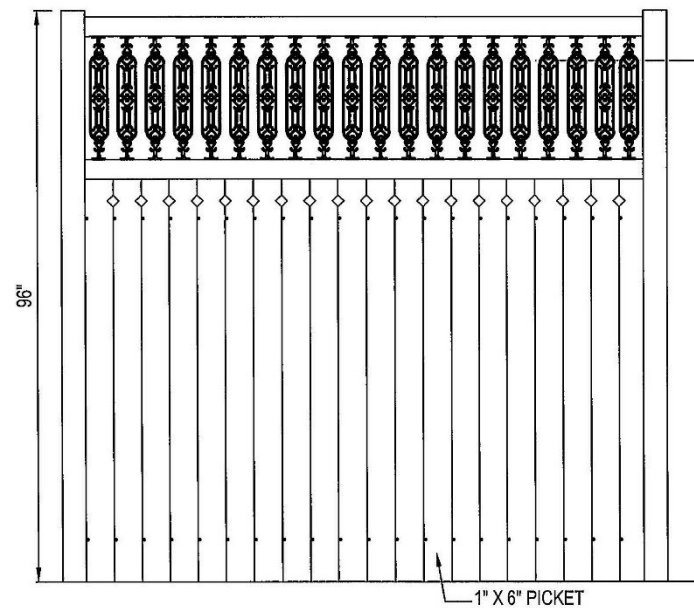
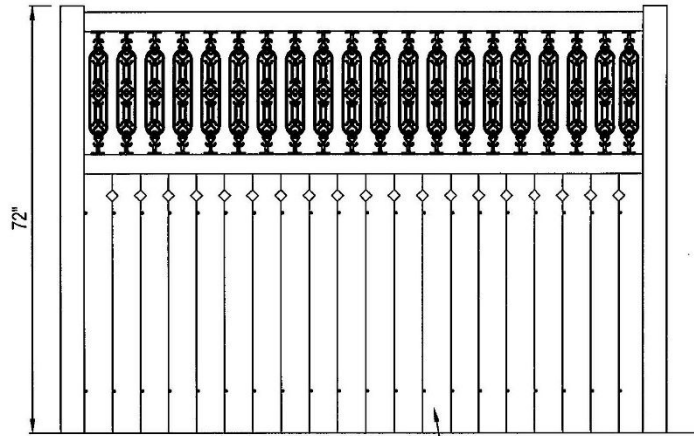
SCALE: N.T.S.

DATE: April 2016 FILE: Fence_Details.dwg



Brighton Township
Beaver County, Pennsylvania
1300 Brighton Road
Beaver, PA 15009

BRIGHTON CODE



Brighton Township
ZONING CODE
SEC.195-137.1

EXHIBIT A - F6a 6' Backyard Wood Fencing F6b 8'

SCALE: N.T.S.

DATE: April 2016 FILE: Fence_Details.dwg



Brighton Township
Beaver County, Pennsylvania
1300 Brighton Road
Beaver, PA 15009

ZONING

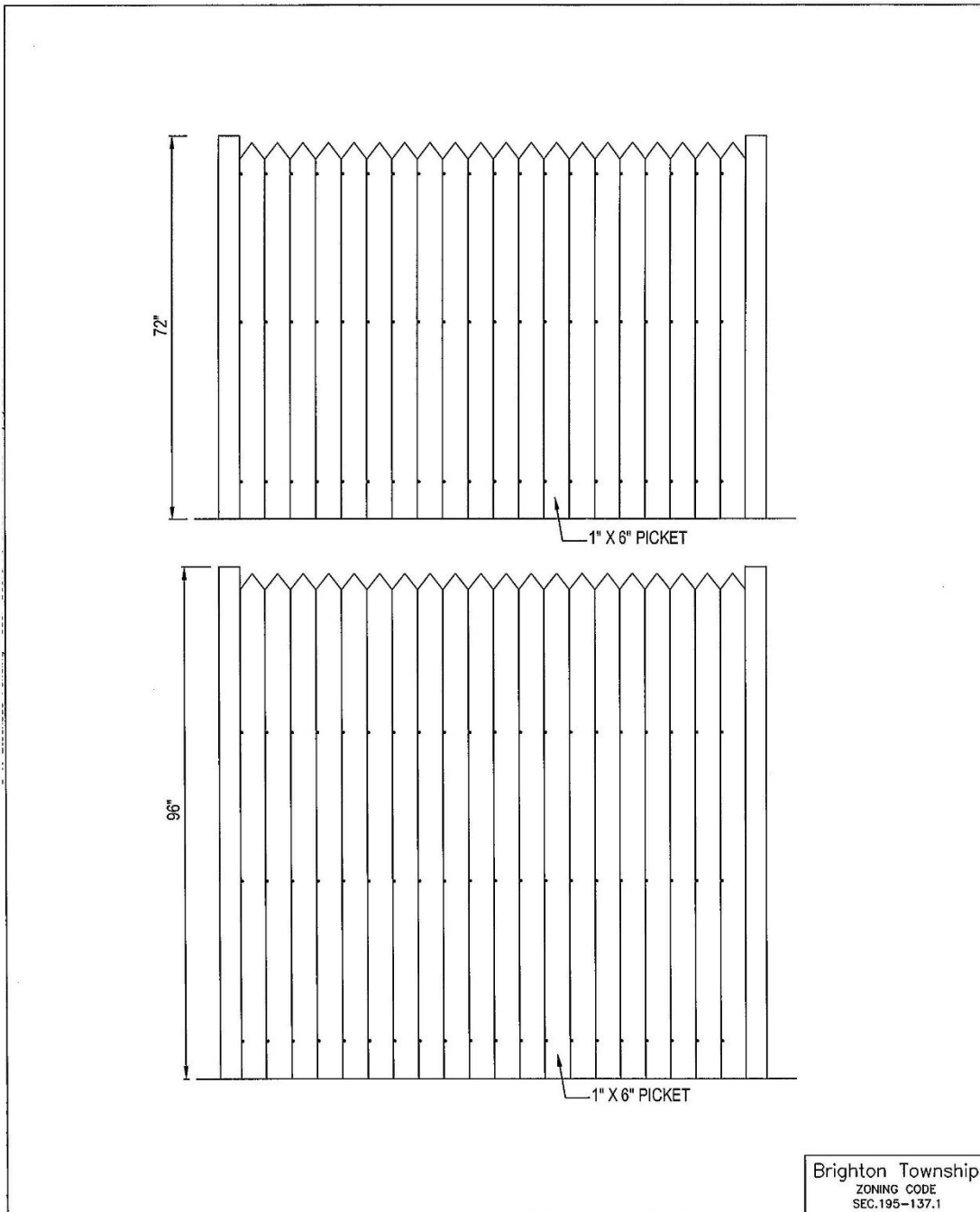


EXHIBIT A- F7a 6' Stockade Fencing F7b 8'

SCALE: N.T.S.

DATE: April 2016 FILE: Fence_Details.dwg



Brighton Township
Beaver County, Pennsylvania
1300 Brighton Road
Beaver, PA 15009